

Institut za zaštitu zdravlja Srbije "Dr Milan Jovanović - Batut"

Institute of Public Health of Serbia " Dr Milan Jovanović - Batut"

Centar za prevenciju i kontrolu nezaraznih oboljenja

Center for prevention and control of noncommunicable diseases

INCIDENCIJA I MORTALITET OD RAKA U CENTRALNOJ SRBIJI

CANCER INCIDENCE AND MORTALITY IN CENTRAL SERBIA

2006

REGISTAR ZA RAK U CENTRALNOJ SRBIJI

CANCER REGISTRY OF CENTRAL SERBIA



ISBN 86-7358-030-7

IZVEŠTAJ BR.8

REPORT No.8

Beograd, 2009.

Institut za javno zdravlje Srbije "Dr Milan Jovanović - Batut"
Institute of Public Health of Serbia " Dr Milan Jovanović - Batut"

Odeljenje za prevenciju i kontrolu nezaraznih bolesti
Department for Prevention and Control of Noncommunicable Diseases



INCIDENCIJA I MORTALITET OD RAKA U CENTRALNOJ SRBIJI

**CANCER INCIDENCE AND MORTALITY
IN CENTRAL SERBIA**

2006

REGISTAR ZA RAK U CENTRALNOJ SRBIJI
CANCER REGISTRY OF CENTRAL SERBIA



ISBN 86-7358-030-7

IZVEŠTAJ BR. 8
REPORT No. 8

Beograd, 2009.

Izdavač

Institut za javno zdravlje Srbije "Dr Milan Jovanović - Batut"

Published by

Institute of Public Health of Serbia " Dr Milan Jovanović - Batut"

Direktor**Director**

Prim. dr sc. Tanja Knežević / *Tanja Knezevic, MD, PhD*

Odeljenje za prevenciju i kontrolu nezaraznih bolesti**Department for Prevention and Control of Noncommunicable Diseases**

Mr sc. dr Dragan Miljuš / *Dragan Miljus, MD, M. Sc. - Head of Department*

Dr Snežana Živković / *Snezana Zivkovic, MD*

Sanja Savković, inženjer statistike / *Sanja Savkovic, statistics engineer*

Zorica Božić, viši dijetetski nutricionista / *Zorica Bozic, senior dietitian nutritionist*

Uređivački odbor**Editorial Board**

Mr sc. dr Dragan Miljuš / *Dragan Miljus, MD, M. Sc.*

Dr Snežana Živković / *Snezana Zivkovic, MD*

Dizajn i priprema za štampu**Design and typesetting**

Mr sc. dr Dragan Miljuš / *Dragan Miljus, MD, M. Sc.*

Dr Snežana Živković / *Snezana Zivkovic, MD*

Zorica Božić, viši dijetetski nutricionista / *Zorica Bozic, senior dietitian nutritionist*

Lektor**Language editor**

Mr Tamara Gruden / *Mr Tamara Gruden*

Korespondencija**Correspondence to**

Mr sc. dr Dragan Miljuš / *Dragan Miljus, MD, M. Sc.*

Dr Snežana Živković / *Snezana Zivkovic, MD*

Institut za javno zdravlje Srbije

Dr Subotića 5, 11 000 Beograd, Srbija

Tel: +381 (011) 2684 566/160, 115

Fax: +381 (011) 2684 140

E-mail: nezaraznibatut@yahoo.com

Web site://www.batut.org.rs

Štampa**Printed by**

Tiraž / 500 primeraka

Circulation / 500 copies

SADRŽAJ / CONTENTS

Uvod i objašnjenja

Introduction and Comments

Tabele i slike / *Tables and Figures*

1. Broj stanovnika prema uzrastu i polu, centralna Srbija, 2006. godina
Population of Central Serbia by age and sex, 2006
2. Broj stanovnika prema okruzima i polu, centralna Srbiji, 2006. godina
Population of Central Serbia by administrative regions by sex, 2006
3. Stanovništvo prema uzrastu i polu, centralna Srbija, popis 2002. i 2006. godine
Population of Central Serbia by age sex, census 2002 and estimate 2006
4. Broj novoobolelih osoba od raka prema polu, centralna Srbija, 1990 - 2006.
Number of new cancer cases by sex, Central Serbia, 1990 - 2006
5. Broj umrlih osoba od raka prema polu, centralna Srbija, 1990 - 2006.
Number of death cancer cases by sex, Central Serbia, 1990 - 2006
6. Standardizovana incidencija i mortalitet od raka na 100.000 stanovnika, centralna Srbija, 1990 – 2006 godina
Standardized cancer incidence and mortality rates per 100.000 population, Central Serbia, 1990 – 2006
7. Standardizovane stope mortaliteta od vodećih lokalizacija raka na 100.000 stanovnika, muškarci, centralna Srbija, 1990 - 2006.god.
Standardized cancer mortality rates per 100.000 population, males, Central Serbia, 1990 - 2006
8. Standardizovane stope mortaliteta od vodećih lokalizacija raka na 100.000 stanovnika, žene, centralna Srbija, 1990 - 2006.god.
Standardized cancer mortality rates per 100.000 population, females, Central Serbia, 1990 -2006
9. Vodeće lokalizacije u obolevanju od raka prema polu, centralna Srbija, 2006. godina
The leading cancer sites by sex, Central Serbia, 2006
10. Vodeće lokalizacije u umiranju od raka prema polu, centralna Srbija, 2006. godina
Deaths for leading cancer sites by sex, Central Serbia, 2006
11. Broj novoobolelih slučajeva od raka prema vodećim lokalizacijama, okruzima i polu, centralna Srbija, 2006. godina
Number of new cancer cases by sex and leading primary sites, Central Serbia, 2006
12. Sirove stope incidencije od raka prema vodećim lokalizacijama, okruzima i polu, centralna Srbija, 2006. godina
Crude cancer incidence rates by sex and leading primary sites, Central Serbia, 2006

13. Standardizovane stope incidencije od raka prema vodećim lokalizacijama okruzima i polu, centralna Srbija, 2006. godina
Standardized cancer incidence rates by sex and leading primary sites, Central Serbia, 2006
14. Broj umrlih slučajeva od raka prema prema vodećim lokalizacijama, okruzima i polu, centralna Srbija, 2006. godina
Number of death cancer cases by sex and leading primary sites, Central Serbia, 2006
15. Sirove stope mortaliteta od raka prema vodećim lokalizacijama, okruzima i polu, centralna Srbija, 2006. godina
Crude cancer mortality rates by sex and leading primary sites, Central Serbia, 2006
16. Standardizovane stope mortaliteta od raka prema vodećim lokalizacijama, okruzima i polu, centralna Srbija, 2006. godina
Standardized cancer mortality rates by sex and leading primary sites, Central Serbia, 2006
17. Ukupan broj novoobolelih i broj novoobolelih od raka sa procentom registrovanih samo na osnovu prijave smrti, prema primarnoj lokalizaciji i polu, centralna Srbija, 2006. godina
Total number of new cancer cases and number and percentage of cases registered from death certificates only, of corpus uteri, Central Serbia, 2006
18. Broj novoobolelih slučajeva od raka, prema primarnoj lokalizaciji, uzrastu i polu, centralna Srbija, 2006. godina
Number of new cancer cases by primary site, age and sex, Central Serbia, 2006
19. Sirove i standardizovane stope incidencije od raka na 100 000 stanovnika, prema primarnoj lokalizaciji, uzrastu i polu, centralna Srbija, 2006. godina
Crude and standardized cancer incidence rates per 100 000 population by primary site, age and sex, Central Serbia, 2006
20. Broj umrlih slučajeva od raka, prema primarnoj lokalizaciji, uzrastu i polu, centralna Srbija, 2006. godina
Number of death cancer cases by primary site, age and sex, Central Serbia, 2006
21. Sirove i standardizovane stope mortaliteta od raka na 100 000 stanovnika, prema primarnoj lokalizaciji, uzrastu i polu, centralna Srbija, 2006. godina
Crude and standardized cancer mortality rates per 100 000 population by primary site, age and sex, Central Serbia, 2006
22. Ukupan broj novoobolelih, broj i procenat histološki i citološki verifikovanih slučajeva raka prema primarnoj lokalizaciji i polu, centralna Srbija, 2006. godina
Total number of new cancer cases, number and percentage of histologically and cytologically confirmed cancer cases, by primary site and sex, Central Serbia, 2006

23. Broj novoobolelih i incidencija od raka prema primarnoj lokalizaciji, uzrastu i polu, centralna Srbija, 2006. godina
Number of new cancer cases and cancer incidence rates by primary site, age and sex, Central Serbia, 2006
24. Broj umrlih i mortalitet od raka prema primarnoj lokalizaciji, uzrastu i polu, centralna Srbija, 2006. godina
Number of death cancer cases and cancer mortality rates by primary site, age and sex, Central Serbia, 2006

UVOD

Populacioni registar za rak osnovan je u Srbiji 1970. godine na osnovu Plana statističkih istraživanja od interesa za Republiku (Sl. glasnik SRS br. 32/69).

U cilju primene jedinstvene metodologije u vođenju Registra u svim teritorijalnim jedinicama bivše Jugoslavije, 1986. godine doneti su Uputstvo o načinu i postupku prijavljivanja lica obolelih od malignih neoplazmi (Sl. list SFRJ, br. 3/86) i Pravilnik o obrascu Registra i načinu njegovog vođenja, obrascu prijave i postupku prijavljivanja i odjavljivanja određenih bolesti (Sl. glasnik SRS, br. 42/86).

Neprecizno uputstvo, nedovoljna edukacija zdravstvenih radnika, kao i nedostatak informatičke podrške imali su za posledicu subregistraciju novootkrivenih slučajeva raka, kao i relativno loš kvalitet podataka na samoj prijavi. U periodu od 1986. do 1995. godine, broj obolelih slučajeva malignih tumora koji su prijavljeni Registru bio je približno isti ili čak i manji od broja umrlih od raka.

Polazeći od zakonske obaveze i uloge Registra (pre svega, za procenu opterećenosti društva rakom, donošenje programa primarne prevencije, planiranje onkološke zdravstvene zaštite, kao i za klinička i epidemioloških istraživanja), u toku 1996. godine pristupljeno je njegovoj reorganizaciji u skladu sa preporukama Internacionalne (International Agency for Research on Cancer - IACR) i Evropske (European Network of Cancer Registries - ENCR) asocijacije registara za rak.

Reorganizacija je obuhvatala:

- decentralizaciju (registri se vode na nivou okruga, a baza podataka za centralnu Srbiju se nalazi u Institutu za javno zdravlje Srbije),
- pored pasivnog i aktivni način prikupljanja podataka,
- nove izvore informacija,
- edukaciju zdravstvenih radnika,
- informatičku podršku i
- povratni sistem informacija.

Zahvaljujući uspešnoj reorganizaciji, u toku 1998. godine Registar za rak u centralnoj Srbiji je primljen u Internacionalnu (IACR) i Evropsku asocijaciju registara za rak (ENCR).

Posle navedenih aktivnosti i vremenskog perioda od nekoliko godina, koji je neophodan za stabilnost podataka, ostvareni su uslovi za izradu prvog izveštaja u decembru 2002. godine.

U registrima koji funkcionišu više decenija, zbog mnogobrojnih izvora podataka i potrebe za njihovom proverom i analizom, uobičajeni vremenski period za prikupljanje podataka iznosi dve godine posle čega se publikuje izveštaj.

INTRODUCTION

The Population Register for Cancer was formed in Serbia in 1970, originated from the Plan of Statistical Research of Interest for the Republic (Official Gazette of the Republic of Serbia No. 32/69).

In 1986, aiming to apply a unified Register implementation methodology in all territorial units of Former Yugoslavia, the Guidelines On Ways And Procedures Of Reporting Persons With Malign Neoplasms (Official Gazette SFRY, No. 3/86) and the Regulation Book For The Register Form And The Method Of Updating, The Report Forms And Reporting And Cancelation Procedures For Certain Diseases (Official Gazette Gazette of the Republic of Serbia No. 42/86) were adopted.

Unprecise Guidelines, insufficient education of the medical personnel, as well as the lack of informatics support resulted in the subregistration of newly found cases of cancer, as well as a relatively poor quality of data on the report forms themselves. In the period of 1986 - 1995, the number of cases with malignant tumors reported to the Register was approximately the same or even lower compared to the number of cases deceased from cancer.

Starting from legal obligations and role of the Register, (foremost for the evaluation of the cancer burden on society, adoption of primary prevention programs, planning oncology health care, as well as clinical and epidemiological research), the reorganization of the Register began in 1996, in accordance with the recommendations of the Interational Agency for Research on Cancer - IACR, and European Network of Cancer Registries - ENCR.

The reorganization encompassed:

- Decentralization (registers are formed on the level of regions, while the main database for Central Serbia is located in the Institute of Public Health of Serbia),
- Apart from passive, active data collection,
- New sources of information,
- Education of medical personnel,
- Informatics support and
- Feedback system of information.

During 1998, due to a successful reorganization, the Cancer Register in Central Serbia was admitted into the Interational Agency for Research on Cancer (IACR) and European Network of Cancer Registries (ENCR).

Following the afore-mentioned activities and several years period necessary for achieving stability of the data, conditions were created for issuing the first Report in December 2002.

In Registers functioning over a period of several decades, due to numerous data sources and the need to check and analyze them, the usual time span for data collection is two years, after which the Report is published.

METOD

Registar za rak u centralnoj Srbiji obuhvata podatke o: ličnim karakteristikama obolelih/umrlih, mogućoj pojavi multiplog primarnog tumora, datumu utvrđivanja sadašnjeg oboljenja, načinu dijagnostike, karakteristikama tumora (primarna i sekundarna anatomska lokalizacija, histološki tip, stadijum), ishodu bolesti, kao i podatke o zdravstvenoj ustanovi koja je prijavila maligni tumor.

Izvori informacija o obolelim/umrlim od raka su podaci iz instituta za onkologiju, onkoloških dispanzera, onkoloških klinika, bolničkih i vanbolničkih zdravstvenih ustanova, patohistoloških/citoloških, hematoloških i drugih laboratorija, prijava smrti, fondova zdravstvenog osiguranja i ciljanih istraživanja.

Informatičku podršku Registru pružio je programski paket CanReg4 (Department of Descriptive Epidemiology, IARC, Lyon, France, 2002).

U cilju obezbeđenja kvalitetnog prikupljanja, unosa, čuvanja, obrade i analize podataka u Registru, primenjena je metodologija međunarodnih asocijacija (IARC i ENCR) registara za rak.

Za analizu umiranja od malignih tumora u centralnoj Srbiji u 2006. godini, korišćeni su nepublikovani podaci Republičkog zavoda za statistiku. Izvor podataka o populaciji bila je procena stanovništva za 2006. godinu Republičkog zavoda za statistiku.

Maligni tumori su šifrirani prema Međunarodnoj klasifikaciji bolesti - deseta revizija, knjiga 1- (šifre C00-C96) i prema Međunarodnoj klasifikaciji onkoloških bolesti - drugo izdanje (šifre 8000/3-9941/3) - International Classification of Diseases for Oncology - Third Edition, World Health Organization, 2000, Geneva. Registrom nisu obuhvaćeni tumori "in situ" (šifre D00-D09).

U izveštaju pored nestandardizovanih, prikazane su i standardizovane stope incidencije (tabele 37-55) i mortaliteta (tabele 75-96). Navedene stope standardizovane su metodom direktne standardizacije, a kao standardna populacija korišćena je populacija sveta (ASR-W), Evrope (ASR-E) i trunkova (ASR-TRUNC).

Učešće prijavljenih slučajeva malignih tumora koji su registrovani samo na osnovu prijave smrti (tabela 17), kao i učešće histološki i citološki verifikovanih malignih tumora (tabela 94) u ukupnom broju prijavljenih malignih tumora, bili su osnov za procenu kvaliteta podataka Registra.

METHOD

The Central Serbia Cancer Register includes the following data: personal characteristics of new cases/deceased, possible appearance of multiple primary tumors, date of determination of current illness, diagnostic methods, tumor characteristics (primary and secondary anatomy localization, histology type, stage), outcome of the disease, as well as data on the health institution reporting the malign tumor.

Information sources concerning new cancer cases/deceased cases are data from the oncology institutes, oncology dispensaries, oncology clinics, hospitals and out-patients health institutions, pathology/cytology, hematology and other laboratories, death reports, health insurance funds and targeted research.

The Register is informatically supported by the CanReg4 program package (Department of Descriptive Epidemiology, IARC, Lyon, France, 2002).

With the aim of providing quality in collection, entry, keeping, processing and analysis of data in the Register, the methodology of international associations was applied (IARC I ENCR) for cancer registers.

Unpublished data of the Republic Statistics Institute were used for the analysis of death due to malign tumors in Central Serbia in 2006.

The source of data concerning the population was the 2006 estimate of the Republic Statistics Institute.

Malign tumors are coded according to the International Classification of Diseases - Tenth Revision, Volume 1 (codes C00-C96) and according to the International Classification of Diseases for Oncology - Third Edition (codes 8000/3-9941/3), World Health Organization, 2000, Geneva. The Register does not include tumors "in situ" (codes D00-D09).

Apart from crude rates, the Report includes standardized incidence rates (tables 37-55) and mortality rates (tables 75-96). These rates were standardized by the method of direct standardization, with the World (ASR-W), European (ASR-E) or truncated (ASR-TRUNC) population as the standard population.

The percentage of new malign tumor cases registered only on the basis of death reports (table 17), as well as the percentage of histologically and cytologically verified malign tumors (table 94) out of the total number of reported cancer cases, were the foundation for the evaluation of Register data quality.

DEFINICIJE

Incidencija je broj novodijagnostikovanih slučajeva raka u definisanoj populaciji, prijavljenih registru u datoj kalendarskoj godini.

Uzrasno specifična stopa incidencije je broj novoobolelih od raka u definisanoj uzrasnoj grupi (najčešće petogodišnji interval) na 100.000 stanovnika te uzrasne grupe.

Mortalitet je broj slučajeva umrlih od raka koji se javljaju u definisanoj populaciji tokom određenog vremenskog perioda.

Uzrasno specifična stopa mortaliteta je broj umrlih od raka u definisanoj uzrasnoj grupi (najčešće petogodišnji interval) na 100.000 stanovnika te uzrasne grupe.

Standardizovane stope incidencije i mortaliteta predstavljaju fiktivne vrednosti koje se dobijaju određenim tehničkim postupkom, uvođenjem standardne populacije, obično je to: populacija sveta (ASR-W), Evrope (ASR-E) ili tranka (ASR-TRUNC). Njima se prevazilaze razlike (najčešće po polu i uzrastu) koje postoje u različitim populacijama, tako da su pogodne za poređenja.

DEFINITIONS

Incidence is the number of newly diagnosed cancer cases in a defined population, reported to the Register in the given calendar year.

The age-specific incidence rate is the number of new cancer cases in a defined age-group (usually five-year interval) per 100 000 population of that age group.

Mortality is the number of cases deceased from cancer appearing in a defined population during a determined period of time.

The age-specific mortality rate is the number of deceased from cancer in a defined age-group (usually five-year interval) per 100 000 population of that age group.

Standardized incidence and mortality rates represent fictive values reached by a certain technique, introducing standard population: usually World (ASR-W), European (ASR-E) or truncated population (ASR-TRUNC). They are used to eliminate differences (mostly gender and age) existing in different populations and are, therefore, convenient for comparison.

U realizaciji ovog izveštaja učestvovali su zdravstveni radnici i saradnici:

- ***Instituta za javno zdravlje u Nišu i Kragujevcu;***
- ***Zavoda za javno zdravlje na teritoriji centralne Srbije;***
- ***Hospitalnog Registra za rak Instituta za onkologiju i radiologiju Srbije;***
- ***Instituta kliničkog centra Srbije i kliničkog centra u Nišu;***
- ***Kliničko bolničkih centara u Beogradu i Kragujevcu;***
- ***Instituta za zdravstvenu zaštitu majke i deteta "Dr Vukan Čupić";***
- ***Univerzitetske dečije klinike u Beogradu;***
- ***Ginekološko akušerske klinike "Narodni front";***
- ***Zdravstvenih centara;***
- ***Specijalnih / opštih bolnica, i***
- ***Domova zdravlja na teritoriji centralne Srbije.***

Health experts and administrative staff from the following institutions participated in the realization of this Report:

- ***Institutes of Public Health of Nis and Kragujevac;***
- ***Institutes of Public Health on the territory of Central Serbia;***
- ***Hospital Cancer Register of the Oncology and Radiology Institute of Serbia;***
- ***Institutes of the Clinical Centre of Serbia and the Clinical Centre of Nis;***
- ***Clinical-Hospital Centres in Belgrade and Kragujevac;***
- ***Institute for Health Care of Mother and Child "Dr Vukan Čupić";***
- ***University Childrens' Clinic in Belgrade;***
- ***Gyneacology and Obstretics Clinic "Narodni front";***
- ***Health Centres;***
- ***Special / General Hospitals and***
- ***Primary Health Centres on the territory of Central Serbia.***

Koordinatori okružnih Registara za rak / *Coordinators of Cancer Registries:*

Zavod za javno zdravlje Šabac / *Institute of Public Health Sabac*

Dr Olivera Stojanović, specijalista socijalne medicine / *Olivera Stojanovic, MD, specialist specialist in social medicine*

Vesna Maksimović, viši sanitarni tehničar / *Vesna Maksimovic, senior sanitary technician*

Zavod za javno zdravlje Valjevo / *Institute of Public Health Valjevo*

Marija Jovanović, medicinska sestra / *Marija Jovanovic, nurse*

Zavod za javno zdravlje Požarevac / *Institute of Public Health Pozarevac*

Dr Goran Nikolić, specijalista epidemiologije / *Goran Nikolic, MD, specialist in epidemiology*

Srdan Klimek, viši sanitarni tehničar / *Srdjan Klimek, senior sanitary technician*

Nataša Peurača, dipl. biolog / *Natasa Peuraca, graduate biologist*

Institut za javno zdravlje Kragujevac / *Institute of Public Health Kragujevac*

Prof. dr Vesna Pantović, specijalista epidemiologije / *Prof. Vesna Pantovic, MD, PhD, specialist in epidemiology*

Ass. dr Gordana Đorđević, specijalista epidemiologije / *Ass. Prof. Gordana Djordjevic, MD, PhD, specialist in epidemiology*

Jelena Hadžić - Radisavljević, viši sanitarni tehničar / *Jelena Hadzic - Radisavljevic, senior sanitary technician*

Zavod za javno zdravlje Čuprija / *Institute of Public Health Cuprija*

Dr Vesna Stefanović, specijalista epidemiolog / *Vesna Stefanovic, MD, specialist in epidemiology*

Sonja Anđelković, viši sanitarni tehničar / *Sonja Anđelkovic, senior sanitary technician*

Zavod za javno zdravlje Zaječar / *Institute of Public Health Zajecar*

Dr Svetlana Živković, specijalista epidemiolog / *Svetlana Zivkovic, MD, specialist in epidemiology*

Nena Đorđević, operater / *Nena Đorđevic, IT technician*

Zavod za javno zdravlje Užice / *Institute of Public Health Uzice*

Dr sc med Biljana Mijović / *Biljana Mijović MD, PhD, specialist in epidemiology*

Dr Aleksandra Andrić, specijalista epidemiolog / *Aleksandra Andric, MD, specialist in epidemiology*

Marija Dulović, sanitarni tehničar / *Marija Dulovic, sanitary technician*

Zavod za javno zdravlje Čačak / *Institute of Public Health Cacak*

Dr Aksentije Tošić, specijalista epidemiolog / *Aksentije Tasic, MD, specialist in epidemiology*

Radoica Gojgić, dipl. inženjer metalurgije / *Radoica Gojgic, dipl. engineer of metallurgy*

Zavod za javno zdravlje Kraljevo / *Institute of Public Health Kraljevo*

Dr Vladan Šaponjić, specijalista epidemiolog / *Vladan Saponjic, MD, specialist in epidemiology*

Dr Verica Đukić, specijalista epidemiolog / *Verica Djukic, MD, specialist in epidemiology*

Zvonko Marinković, viši sanitarni tehničar / *Zvonko Marinkovic, senior sanitary technician*

Zavod za javno zdravlje Kruševac / *Institute of Public Health Krusevac*

Dr Mirjana Avramović, specijalista epidemiolog / *Mirjana Avramovic, MD, specialist in epidemiology*

Verica Mijailović, viši sanitarni tehničar / *Verica Mijailovic, senior sanitary technician*

Insitut za javno zdravlje Niš / *Institute of Public Health Nis*

Dr Mirko Ilić, specijalista epidemiolog / *Mirko Ilic, MD, specialist in epidemiology*

Aleksandar Stojanović, viši sanitarni tehničar / *Aleksandar Stojanovic, senior sanitary technician*

Zavod za javno zdravlje Pirot / *Institute of Public Health Pirot*

Dr Radmila Zec, specijalista epidemiolog / *Radmila Zec, MD, specialist in epidemiology*

Sonja Petrov, viši sanitarni tehničar / *Sonja Petrov, senior sanitary technician*

Zavod za javno zdravlje Leskovac / *Institute of Public Health Leskovac*

Prim. dr sc. med. Miroslava Dimitrijević, specijalista socijalne medicine / *Prim. Miroslava Dimitrijevic, MD, PhD, specialist in social medicine*

Rosica Pejčić, viši sanitarni tehničar / *Rosica Pejcic, senior sanitary technician*

Zavod za javno zdravlje Vranje / *Institute of Public Health Vranje*

Dr Svetlana Stojanović, specijalista socijalne medicine / *Svetlana Stojadinovic, MD, specialist in social medicine*

Petar Veličković, zdravstveni statističar / *Petar Velickovic, health statistician*

Gradski zavod za javno zdravlje Beograd / *Institute of Public Health Beograd*

Mr sc. med. Ljubinka Marčetić, specijalista socijalne medicine / *Ljubinka Marcetic, MD, M. Sc. specialist in social medicine*

Dr Svetlana Trtica, specijalista socijalne medicine / *Svetlana Trtica, MD, specialist in social medicine*

Aleksandra Čukić, zdravstveni statističar / *Aleksandra Cukic, health statistician*

Tabela 1. Broj stanovnika prema uzrastu i polu, centralna Srbija, 2006*. godina
Table 1. Population of Central Serbia by age and sex, 2006*

Uzrast Age	Muškarci Males	Žene Females	Ukupno Total
0-4	143884	135673	279557
5-9	135453	129490	264943
10-14	153399	145508	298907
15-19	168119	160003	328122
20-24	185648	179596	365244
25-29	189364	185379	374743
30-34	183414	184007	367421
35-39	171427	174961	346388
40-44	173074	178601	351675
45-49	187628	194755	382383
50-54	218486	225108	443594
55-59	187211	201102	388313
60-64	122792	138998	261790
65-69	136272	161902	298174
70-74	127574	161731	289305
75+	147409	221003	368412
Ukupno (Total)	2631154	2777817	5408971

Tabela 2. Broj stanovnika prema okruzima i polu, centralna Srbija, 2006*. godina
Table 2. Population of Central Serbia by administrative districts by sex, 2006*

Teritorija District	Muškarci Males	Žene Females	Ukupno Total
Grad Beograd	758008	844853	1602861
Kolubarski	91631	94376	186007
Mačvanski	158297	161732	320029
Raški	146137	150624	296761
Moravički	108059	112035	220094
Zlatiborski	150826	154246	305072
Rasinski	122967	128385	251352
Šumadijski	143462	150407	293869
Pomoravski	107288	114416	221704
Braničevski	94342	101228	195570
Podunavski	101892	105325	207217
Zaječarski	62929	67008	129937
Borski	67715	70747	138462
Nišavski	186078	191981	378059
Pčinjski	114819	114777	229596
Jablanički	116825	117193	234018
Toplički	49390	48840	98230
Pirotski	50489	49644	100133
Centralna Srbija (Central Serbia)	2631154	2777817	5408971

Slika 1. Stanovništvo prema uzrastu i polu, centralna Srbija, 2002† i 2006*. godina
Figure 1. Population of Central Serbia by age and sex, 2002† and 2006*

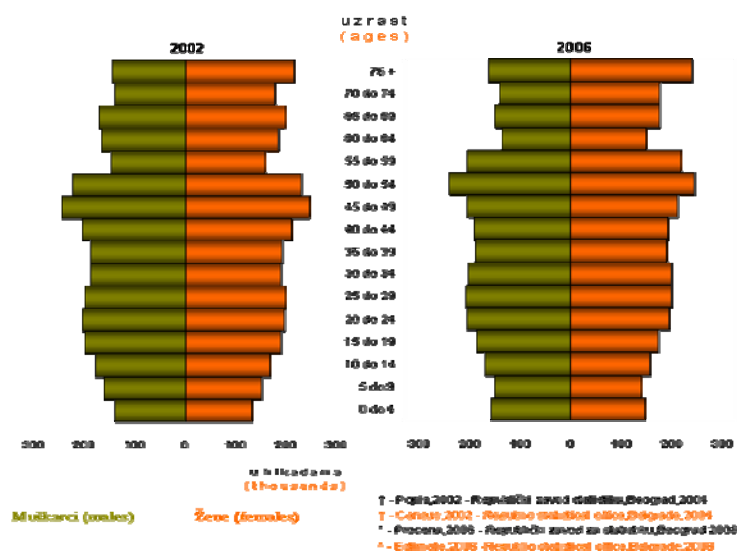


Tabela 3. Broj novoobolelih osoba od raka prema polu, centralna Srbija, 1990 - 2006. godina

Table 3. Number of new cancer cases by sex, Central Serbia, 1990 - 2006

P o l (Sex)	G o d i n e (Y e a r s)																
	1990*	1991*	1992*	1993*	1994*	1995*	1996*	1997*	1998*	1999	2000	2001	2002	2003	2004	2005	2006
Muškarci (Males)	4879	4479	4417	2900	2639	3101	8987	9412	9788	9964	11270	12110	12449	12350	12801	12679	12835
Žene (Females)	5019	4696	4174	3354	3250	3955	8236	8562	9053	9661	10853	11249	11449	11594	11954	11690	11758
Ukupno (Total)	9898	9175	8591	6254	5889	7056	17223	17974	18841	19625	22123	23359	23898	23944	24755	24369	24593

* subregistracija (subregistration)

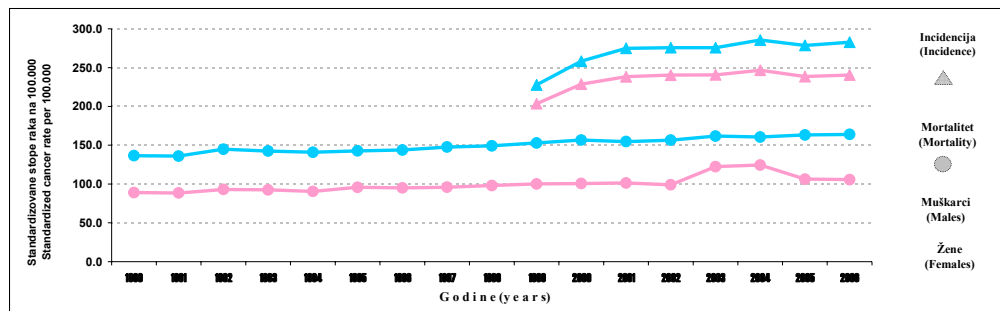
Tabela 4. Broj umrlih osoba od raka prema polu, centralna Srbija, 1990 - 2006. godina

Table 4. Number of death cancer cases by sex, Central Serbia, 1990 - 2006

P o l (Sex)	G o d i n e (Y e a r s)																
	1990	1991	1992	1993	1994	1995	1996	1997	1998	1999	2000	2001	2002	2003	2004	2005	2006
Muškarci (Males)	5612	5658	6083	6093	6146	6287	6488	6736	6874	6962	7206	7149	7496	7655	7728	7858	7968
Žene (Females)	4202	4303	4544	4581	4569	4907	4919	5052	5288	5350	5447	5553	5571	5832	5980	6142	6146
Ukupno (Total)	9814	9961	10627	10674	10715	11194	11407	11788	12162	12312	12653	12702	13067	13487	13708	14000	14114

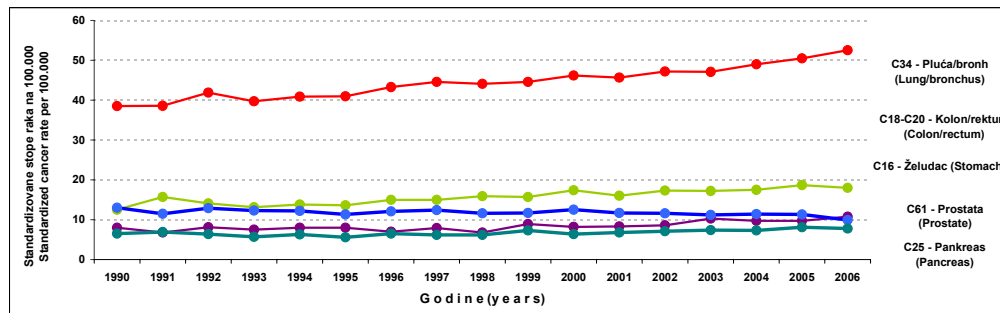
Slika 2. Standardizovana incidencija i mortalitet od raka na 100.000 stanovnika, centralna Srbija, 1990 - 2006. godina

Figure 2. Standardized cancer incidence and mortality rates per 100.000 population, Central Serbia, 1990 - 2006



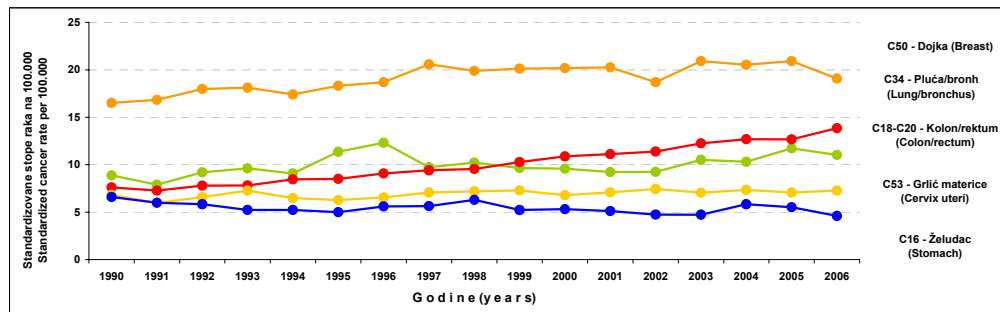
Slika 3. Standardizovane stope mortaliteta od vodećih lokalizacija raka na 100.000 stanovnika, muškarci, centralna Srbija, 1990 - 2006. godina

Figure 3. Standardized cancer mortality rates per 100.000 population, males, Central Serbia, 1990 - 2006

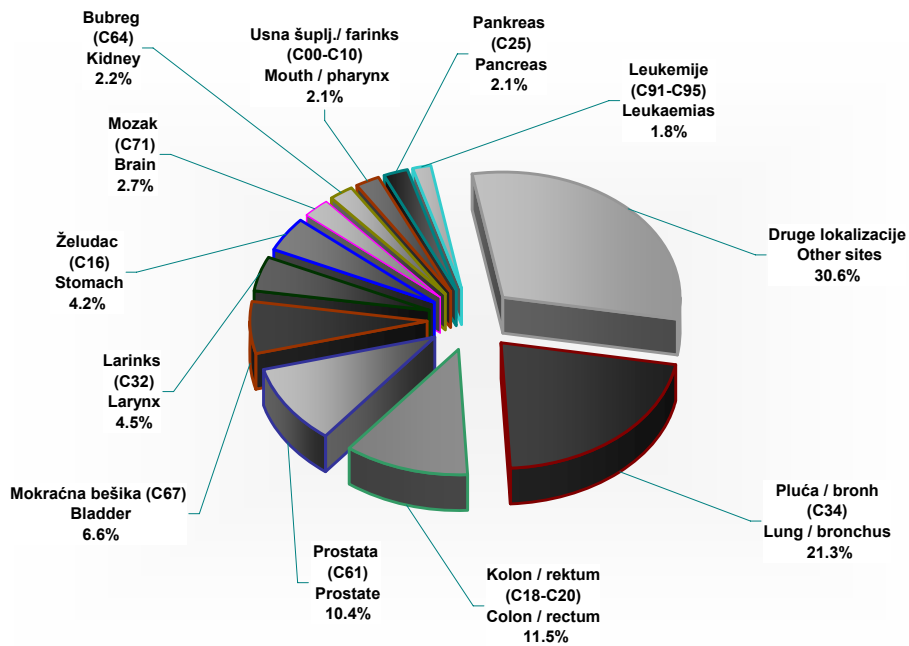


Slika 4. Standardizovane stope mortaliteta od vodećih lokalizacija raka na 100.000 stanovnika, žene, centralna Srbija, 1990 - 2006. godina

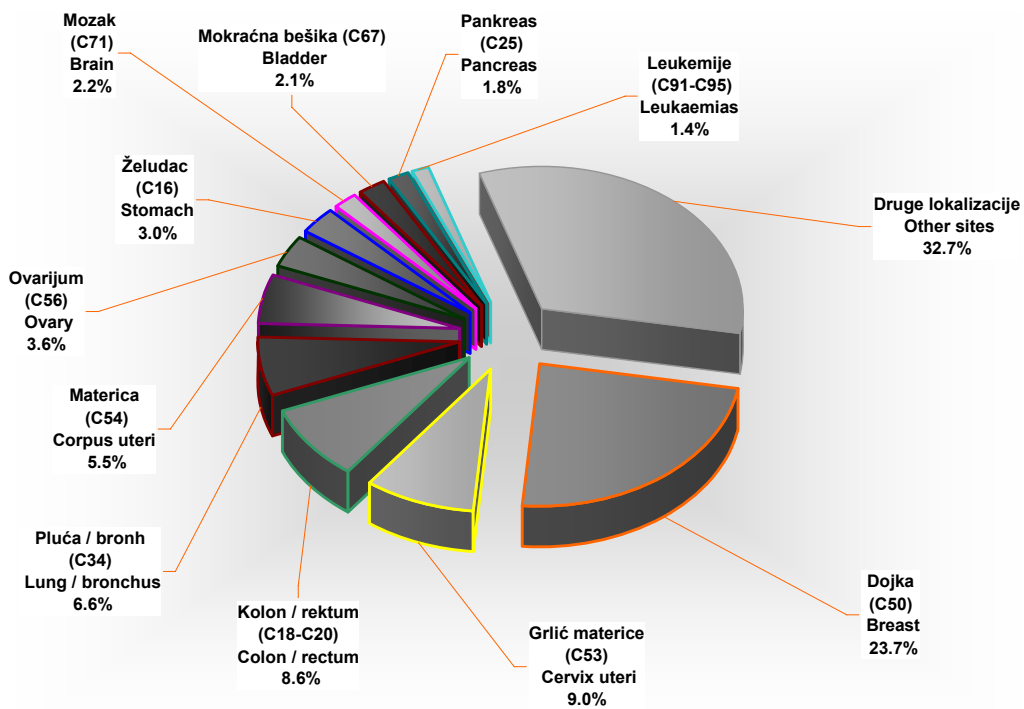
Figure 4. Standardized cancer mortality rates per 100.000 population, females, Central Serbia, 1990 - 2006



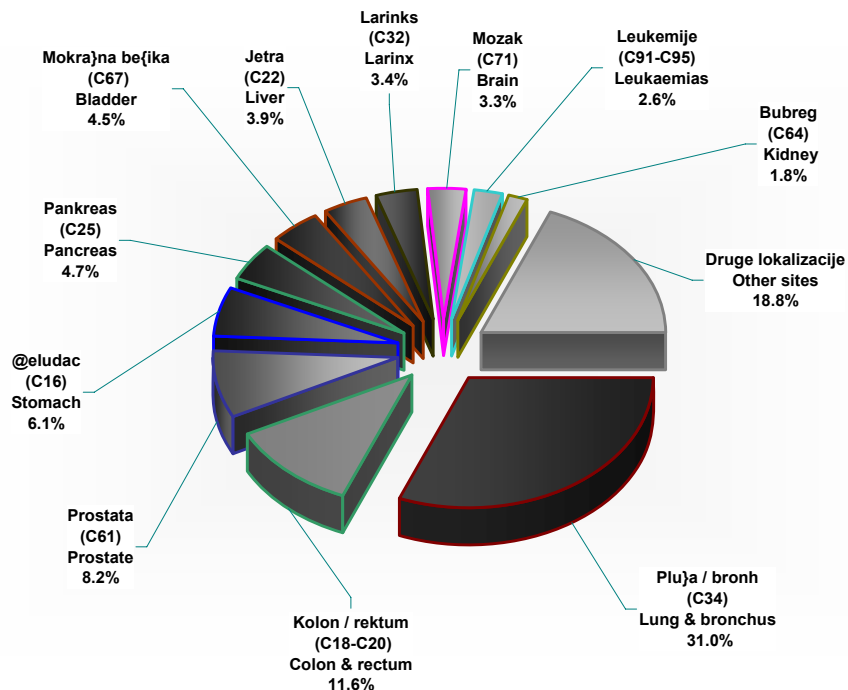
Slika 5. Vodeće lokalizacije u obolevanju od malignih tumora kod muškaraca, centralna Srbija, 2006. godina
 Figure 5. The leading cancer sites in males, Central Serbia, 2006



Slika 6. Vodeće lokalizacije u obolevanju od malignih tumora kod žena, centralna Srbija, 2006. godina
 Figure 6. The leading cancer sites in females, Central Serbia, 2006



Slika 7. Vodeće lokalizacije u umiranju od malignih tumora kod muškaraca, centralna Srbija, 2006. godina
Figure 7. The leading cancer sites, deaths, males in Central Serbia, 2006



Slika 8. Vodeće lokalizacije u umiranju od malignih tumora kod žena, centralna Srbija, 2006. godina
Figure 8. The leading cancer sites, deaths, females in Central Serbia, 2006

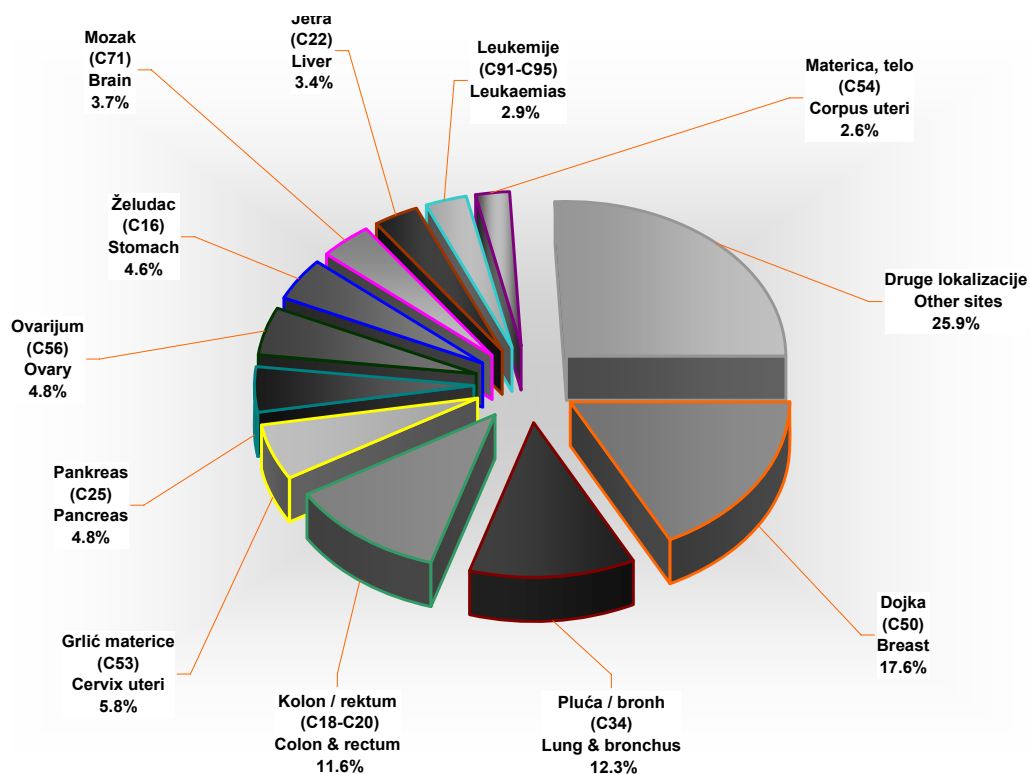


Tabela 5. Broj novoobolelih slučajeva od raka prema vodećim lokalizacijama i okruzima, muškarci, centralna Srbija, 2006. godina

Table 5. Number of new cancer cases by leading primary sites, males, regions in Central Serbia, 2006

Primarne lokalizacije (10-MKB) Primary sites (ICD-10)	O k r u g (R e g i o n)																		
	centralna Srbija	Grad Beograd	Kolubarski	Mačvanski	Raski	Moravički	Zlatiborski	Rasinski	Šumadijski	Pomoravski	Braničevski	Podunavski	Zajčarski	Borski	Nišavski	Pčinjski	Jablanički	Toplički	Pirotski
Pluća i bronh, (C34) Lung and bronchus	2735	900	100	190	109	129	133	184	160	65	95	120	46	51	178	103	75	56	41
Kolon i rektum (C18-C20) Colon and rectum	1479	474	56	81	64	66	90	53	41	43	49	66	49	42	126	34	37	21	33
Prostata (C61) Prostate	1330	498	68	57	53	53	61	57	81	24	58	58	21	34	76	44	42	17	28
Mokraćna bešika (C67) Bladder	848	274	30	50	33	39	47	23	72	25	47	37	15	38	45	23	31	10	9
Larinks (C32) Larynx	578	166	21	40	34	24	26	38	34	21	18	32	10	10	48	13	23	12	8
Želudac (C16) Stomach	542	116	28	43	40	32	39	22	41	8	22	21	11	11	44	20	28	9	7
Mozak (C71) Brain	343	68	16	14	18	10	23	30	33	12	25	14	7	12	29	12	6	6	8
Bubreg (C64) Kidney	287	83	11	19	11	21	23	10	22	3	12	17	2	10	17	5	6	7	8
Usna šuplj. i farinks (C00-C10) Mouth and pharynx	274	83	8	24	10	12	10	12	20	8	11	17	5	8	20	9	8	5	4
Pankreas (C25) Pancreas	266	48	19	13	18	6	29	6	20	10	5	16	19	9	20	11	7	4	6
Leukemije (C91-C95) Leukaemias	225	47	14	17	8	20	10	2	32	13	1	3	2	6	19	4	12	4	10
Jetra (C22) Liver	210	43	9	25	18	9	6	1	9	3	10	8	3	7	26	8	7	8	10
Druge lokalizacije Other sites	3718	1294	158	232	176	150	206	127	314	98	107	137	105	88	269	80	88	47	97
Sve lokalizacije (C00-C97) All sites	12835	4094	538	805	592	571	703	565	879	333	460	546	295	326	917	366	370	206	269
Sve lokalizacije bez kože (C44) All sites but skin (C44)	11104	3304	466	692	508	491	613	521	758	325	446	509	243	296	807	350	345	196	234

Tabela 6. Broj novoobolelih slučajeva od raka prema vodećim lokalizacijama i okruzima, žene, centralna Srbija, 2006. godina

Table 6. Number of new cancer cases by leading primary sites, females, regions in Central Serbia, 2006

Primarne lokalizacije (10-MKB) Primary sites (ICD-10)	O k r u g (R e g i o n)																		
	centralna Srbija	Grad Beograd	Kolubarski	Mačvanski	Raski	Moravički	Zlatiborski	Rasinski	Šumadijski	Pomoravski	Braničevski	Podunavski	Zajčarski	Borski	Nišavski	Pčinjski	Jablanički	Toplički	Pirotski
Dojka (C50) Breast	2784	1179	83	127	115	122	110	128	176	71	81	86	55	59	194	66	53	44	35
Grič materice (C53) Cervix uteri	1053	355	34	58	39	40	50	31	63	30	61	46	30	39	54	40	49	14	20
Kolon i rektum (C18-C20) Colon and rectum	1006	298	53	66	38	55	39	38	75	28	45	37	27	28	71	33	22	16	37
Pluća i bronh (C34) Lung and bronchus	778	226	36	49	29	29	30	54	60	22	32	40	17	17	55	34	15	15	18
Materica (C54) Corpus uteri	646	267	17	25	21	22	16	46	37	14	12	18	15	15	41	27	31	11	11
Ovarijum (C56) Ovary	428	129	18	23	22	19	12	11	34	15	17	26	18	11	35	14	13	4	7
Želudac (C16) Stomach	348	67	12	28	25	12	24	22	22	14	9	12	4	6	35	23	16	10	7
Mozak (C71) Brain	255	53	14	20	20	8	14	9	27	6	22	15	2	4	17	7	7	5	5
Mokraćna bešika (C67) Bladder	242	72	10	6	10	11	11	30	18	7	12	9	6	14	11	9	3	0	3
Pankreas (C25) Pancreas	208	56	10	17	23	4	7	10	12	8	6	11	7	6	16	8	4	1	2
Leukemije (C91-C95) Leukaemias	165	42	17	15	8	7	12	2	20	4	1	0	1	3	15	2	7	5	4
Jetra (C22) Liver	128	21	5	8	7	2	11	3	7	2	7	8	1	6	14	7	4	8	7
Druge lokalizacije Other sites	3717	1270	151	229	185	142	196	145	293	78	123	133	133	92	246	94	66	48	93
Sve lokalizacije (C00-C97) All sites	11758	4035	460	671	542	473	532	529	844	299	428	441	316	300	804	364	290	181	249
Sve lokalizacije bez kože (C44) All sites but skin (C44)	10125	3326	395	581	467	404	457	469	725	293	397	385	247	270	712	347	275	172	203

Tabela 7. Stope incidencije od raka na 100.000 stanovnika prema vodećim lokalizacijama i okruzima, muškarci, centralna Srbija, 2006. godina

Table 7. Cancer incidence rates per 100.000 population by leading primary sites, males, regions in Central Serbia, 2006

Primarne lokalizacije (10-MKB) Primary sites (ICD-10)	O k r u g (R e g i o n)																		
	centralna Srbija	Grad Beograd	Kolubarski	Mačvanski	Raški	Moravički	Zlatiborski	Rasinski	Šumadijski	Pomoravski	Braničevski	Podunavski	Zaječarski	Borski	Nišavski	Pčinjski	Jablanički	Toplički	Pirotski
Pluća i bronh, (C34) Lung and bronchus	103.9	118.7	109.1	120.0	74.6	119.4	88.2	149.6	111.5	60.6	100.7	117.8	73.1	75.3	95.7	89.7	64.2	113.4	81.2
Kolon i rektum (C18-C20) Colon and rectum	56.2	62.5	61.1	51.2	43.8	61.1	62.7	43.1	66.2	40.1	51.9	64.8	77.9	62.0	67.7	29.6	31.7	42.5	65.4
Prostata (C61) Prostate	50.5	65.7	74.2	36.0	36.3	49.0	40.4	46.4	56.5	22.4	61.5	56.9	33.4	50.2	40.8	38.3	36.0	34.4	55.5
Mokraćna bešika (C67) Bladder	32.2	36.1	32.7	31.6	22.6	36.1	31.2	18.7	50.2	23.3	49.8	36.3	23.8	56.1	24.2	20.0	26.5	20.2	17.8
Larinks (C32) Larynx	22.0	21.9	22.9	25.3	23.3	22.2	17.2	30.9	23.7	19.6	19.1	31.4	15.9	14.8	25.8	11.3	19.7	24.3	15.8
Želudac (C16) Stomach	20.6	15.3	30.6	27.2	27.4	29.6	25.9	17.9	28.6	7.5	23.3	20.6	17.5	16.2	23.6	17.4	24.0	18.2	13.9
Mozak (C71) Brain	13.0	9.0	17.5	8.8	12.3	9.3	15.2	24.4	23.0	11.2	26.5	13.7	11.1	17.7	15.6	10.5	5.1	12.1	15.8
Bubreg (C64) Kidney	10.9	10.9	12.0	12.0	7.5	19.4	15.2	8.1	15.3	2.8	12.7	16.7	3.2	14.8	9.1	4.4	5.1	14.2	15.8
Usna šuplj. i farinks (C00-C10) Mouth and pharynx	10.4	10.9	8.7	15.2	6.8	11.1	6.6	9.8	13.9	7.5	11.7	16.7	7.9	11.8	10.7	7.8	6.8	10.1	7.9
Pankreas (C25) Pancreas	10.1	6.3	20.7	8.2	12.3	5.6	19.2	4.9	13.9	9.3	5.3	15.7	30.2	13.3	10.7	9.6	6.0	8.1	11.9
Leukemije (C91-C95) Leukaemias	8.6	6.3	15.3	10.7	5.5	18.5	6.6	1.6	22.3	12.1	1.1	2.9	3.2	8.9	10.2	3.5	10.3	8.1	19.8
Jetra (C22) Liver	8.0	5.7	9.8	15.8	12.3	8.3	4.0	0.8	6.3	2.8	10.6	7.9	4.8	10.3	14.0	7.0	6.0	16.2	19.8
Druge lokalizacije Other sites	141.3	170.6	172.4	146.6	120.4	138.8	133.5	103.3	181.2	91.3	113.4	134.5	166.9	130.0	144.6	69.7	75.3	95.2	192.1
Sve lokalizacije (C00-C97) All sites	487.8	540.1	587.1	508.5	405.1	528.4	466.1	459.5	612.7	310.4	487.6	535.9	468.8	481.4	492.8	318.8	316.7	417.1	532.8
Sve lokalizacije bez kože (C44) All sites but skin (C44)	422.0	435.9	508.6	437.2	347.6	454.4	406.4	423.7	528.4	302.9	472.7	499.5	386.1	437.1	433.7	304.8	295.3	396.8	463.5

Tabela 8. Stope incidencije od raka na 100.000 stanovnika prema vodećim lokalizacijama i okruzima, žene, centralna Srbija, 2006. godina

Table 8. Cancer incidence rates per 100.000 population by leading primary sites, females, regions in Central Serbia, 2006

Primarne lokalizacije (10-MKB) Primary sites (ICD-10)	O k r u g (R e g i o n)																		
	centralna Srbija	Grad Beograd	Kolubarski	Mačvanski	Raški	Moravički	Zlatiborski	Rasinski	Šumadijski	Pomoravski	Braničevski	Podunavski	Zaječarski	Borski	Nišavski	Pčinjski	Jablanički	Toplički	Pirotski
Dojka (C50) Breast	100.2	139.6	87.9	78.5	76.3	108.9	71.3	99.7	117.0	62.1	80.0	81.7	82.1	83.4	101.1	57.5	45.2	90.1	70.5
Grič materice (C53) Cervix uteri	37.9	42.0	36.0	35.9	25.9	35.7	32.4	24.1	41.9	26.2	60.3	43.7	44.8	55.1	28.1	34.9	41.8	28.7	40.3
Kolon i rektum (C18-C20) Colon and rectum	36.2	35.3	56.2	40.8	25.2	49.1	25.3	29.6	49.9	24.5	44.5	35.1	40.3	39.6	37.0	28.8	18.8	32.8	74.5
Pluća i bronh (C34) Lung and bronchus	28.0	26.8	38.1	30.3	19.3	25.9	19.4	42.1	39.9	19.2	31.6	38.0	25.4	24.0	28.6	29.6	12.8	30.7	36.3
Materica (C54) Corpus uteri	23.3	31.6	18.0	15.5	13.9	19.6	10.4	35.8	24.6	12.2	11.9	17.1	22.4	21.2	21.4	23.5	26.5	22.5	22.2
Ovarijum (C56) Ovary	15.4	15.3	19.1	14.2	14.6	17.0	7.8	8.6	22.6	13.1	16.8	24.7	26.9	15.5	18.2	12.2	11.1	8.2	14.1
Želudac (C16) Stomach	12.5	7.9	12.7	17.3	16.6	10.7	15.6	17.1	14.6	12.2	8.9	11.4	6.0	8.5	18.2	20.0	13.7	20.5	14.1
Mozak (C71) Brain	9.2	6.3	14.8	12.4	13.3	7.1	9.1	7.0	18.0	5.2	21.7	14.2	3.0	5.7	8.9	6.1	6.0	10.2	10.1
Mokraćna bešika (C67) Bladder	8.7	8.5	10.6	3.7	6.6	9.8	7.1	23.4	12.0	6.1	11.9	8.5	9.0	19.8	5.7	7.8	2.6	0.0	6.0
Pankreas (C25) Pancreas	7.5	6.6	10.6	10.5	15.3	3.6	4.5	7.8	8.0	7.0	5.9	10.4	10.4	8.5	8.3	7.0	3.4	2.0	4.0
Leukemije (C91-C95) Leukaemias	5.9	5.0	18.0	9.3	5.3	6.2	7.8	1.6	13.3	3.5	1.0	0.0	1.5	4.2	7.8	1.7	6.0	10.2	8.1
Jetra (C22) Liver	4.6	2.5	5.3	4.9	4.6	1.8	7.1	2.3	4.7	1.7	6.9	7.6	1.5	8.5	7.3	6.1	3.4	16.4	14.1
Druge lokalizacije Other sites	133.8	150.3	160.0	141.6	122.8	126.7	127.1	112.9	194.8	68.2	121.5	126.3	198.5	130.0	128.1	81.9	56.3	98.3	187.3
Sve lokalizacije (C00-C97) All sites	423.3	477.6	487.4	414.9	359.8	422.2	344.9	412.0	561.1	261.3	422.8	418.7	471.6	424.0	418.8	317.1	247.5	370.6	501.6
Sve lokalizacije bez kože (C44) All sites but skin (C44)	364.5	393.7	418.5	359.2	310.0	360.6	296.3	365.3	482.0	256.1	392.2	365.5	368.6	381.6	370.9	302.3	234.7	352.2	408.9

Tabela 9. Standardizovane stope incidencije od raka na 100.000 stanovnika prema vodećim lokalizacijama i okruzima, muškarci, centralna Srbija, 2006. godina

Table 9. Standardized cancer incidence rates per 100.000 population by leading primary sites, males, regions in Central Serbia, 2006

Primarne lokalizacije (10-MKB) Primary sites (ICD-10)	O k r u g (R e g i o n)																		
	centralna Srbija	Grad Beograd	Kolubarski	Mačvanski	Raški	Moravički	Zlatiborski	Rasinski	Šumadijski	Pomoravski	Braničevski	Podunavski	Zaječarski	Borski	Nišavski	Pčinjski	Jablanički	Toplički	Pirotski
Pluća i bronh, (C34) Lung and bronchus	61.0	70.2	58.7	72.4	48.8	70.3	52.8	82.6	64.6	36.5	58.0	72.8	42.6	43.2	50.6	64.0	38.3	64.5	46.5
Kolon i rektum (C18-C20) Colon and rectum	31.2	35.0	31.7	30.1	30.1	30.9	34.0	26.3	36.6	23.0	27.1	36.9	36.2	33.3	34.6	21.1	16.6	24.0	31.4
Prostata (C61) Prostate	24.2	33.7	32.3	17.6	19.0	20.8	19.7	21.0	27.1	10.9	26.3	30.1	14.1	23.5	16.7	24.7	17.5	15.2	21.6
Mokraćna bešika (C67) Bladder	17.1	19.4	17.5	18.2	13.4	19.6	16.7	9.6	25.7	11.2	27.3	18.8	10.4	28.8	12.1	13.4	14.8	10.5	8.2
Larinks (C32) Larynx	13.5	13.7	14.5	16.7	16.4	15.3	10.7	17.7	12.7	11.1	11.3	19.3	7.5	8.4	14.5	9.1	12.6	12.7	9.3
Želudac (C16) Stomach	11.6	9.1	14.9	15.8	16.4	15.7	14.4	11.0	15.0	4.4	11.5	11.3	8.9	10.0	11.4	12.9	13.1	13.4	8.6
Mozak (C71) Brain	9.5	6.6	11.5	7.3	8.4	7.5	9.5	19.2	13.9	10.1	17.6	11.8	7.8	13.3	11.4	9.0	3.9	9.8	12.7
Bubreg (C64) Kidney	6.6	7.1	5.5	7.7	5.3	10.5	9.0	5.0	9.6	1.6	6.1	11.5	1.1	8.3	4.9	2.9	3.1	8.6	10.0
Usna šuplj. i farinks (C00-C10) Mouth and pharynx	6.0	6.8	4.5	9.6	4.0	6.1	3.4	6.0	7.9	3.9	5.4	10.3	2.7	6.1	5.5	5.3	4.7	6.0	4.7
Pankreas (C25) Pancreas	5.7	3.6	11.8	4.9	7.8	3.6	11.7	2.2	7.7	5.6	2.5	9.1	16.0	6.1	5.1	5.9	3.5	4.4	6.0
Leukemije (C91-C95) Leukaemias	6.2	5.7	11.3	6.3	4.8	9.4	4.0	0.7	17.1	11.3	0.6	2.2	3.0	6.5	7.0	2.7	6.1	4.0	11.0
Jetra (C22) Liver	4.5	3.5	5.2	9.5	8.2	3.4	2.6	1.0	3.5	1.6	4.9	4.4	1.8	4.8	6.7	4.9	5.1	8.4	7.3
Druge lokalizacije Other sites	85.7	103.1	88.3	94.4	81.1	83.6	81.6	60.6	108.4	61.8	75.2	90.0	90.8	75.9	78.2	53.2	48.7	61.0	119.0
Sve lokalizacije (C00-C97) All sites	282.8	317.6	307.7	310.56	263.7	296.8	270.3	263.0	349.8	192.8	273.9	328.5	242.9	268.3	258.5	229.1	188.0	242.5	296.2
Sve lokalizacije bez kože (C44) All sites but skin (C44)	247.5	260.0	269.8	269.3	228.2	257.2	236.6	245.4	303.4	188.3	265.9	304.9	206.8	246.3	231.4	218.9	176.8	230.6	266.2

Tabela 10. Standardizovane stope incidencije od raka na 100.000 stanovnika prema vodećim lokalizacijama i okruzima, žene, centralna Srbija, 2006. godina

Table 10. Standardized cancer incidence rates per 100.000 population by leading primary sites, females, regions in Central Serbia, 2006

Primarne lokalizacije (10-MKB) Primary sites (ICD-10)	O k r u g (R e g i o n)																		
	centralna Srbija	Grad Beograd	Kolubarski	Mačvanski	Raški	Moravički	Zlatiborski	Rasinski	Šumadijski	Pomoravski	Braničevski	Podunavski	Zaječarski	Borski	Nišavski	Pčinjski	Jablanički	Toplički	Pirotski
Dojka (C50) Breast	59.4	79.6	50.1	50.0	52.0	66.1	42.8	60.7	68.9	39.4	46.3	52.2	42.9	48.4	58.9	42.6	27.2	47.1	45.4
Grlić materice (C53) Cervix uteri	25.8	27.4	25.9	27.0	16.9	26.0	23.3	16.9	28.8	16.4	42.0	30.8	25.5	36.4	19.3	27.4	31.1	17.3	23.9
Kolon i rektum (C18-C20) Colon and rectum	17.8	17.7	25.2	21.5	14.0	24.0	13.1	16.2	25.4	11.7	20.1	17.3	18.0	16.5	16.5	16.2	10.3	14.6	29.9
Pluća i bronh (C34) Lung and bronchus	15.1	14.8	17.0	16.0	11.0	13.2	10.6	21.0	20.5	11.9	16.0	23.5	13.5	12.6	13.0	19.1	7.9	20.2	17.3
Materica (C54) Corpus uteri	13.2	17.7	7.4	10.0	9.0	11.6	6.1	19.4	13.6	5.9	5.6	10.0	9.7	11.4	12.1	17.2	18.1	15.1	11.4
Ovarijum (C56) Ovary	9.4	9.0	12.7	10.0	9.7	8.3	5.0	4.6	14.4	7.4	8.3	15.6	14.2	10.4	10.6	9.2	7.2	5.3	8.5
Želudac (C16) Stomach	6.2	4.2	5.9	9.1	8.4	3.9	8.4	9.1	6.8	10.1	4.6	4.1	1.6	4.0	6.7	13.5	6.5	8.1	5.9
Mozak (C71) Brain	6.8	4.7	11.2	9.9	10.0	4.0	4.8	5.9	13.9	3.9	18.5	9.8	1.1	7.6	5.4	3.6	4.5	10.2	10.7
Mokraćna bešika (C67) Bladder	4.3	4.1	3.5	1.2	3.9	5.4	3.0	10.9	7.3	2.6	5.4	4.1	4.4	9.5	3.2	5.6	2.1	0.0	3.5
Pankreas (C25) Pancreas	3.6	3.3	5.2	4.8	8.5	1.6	2.7	4.1	4.1	2.4	2.4	5.0	6.2	3.3	4.0	4.3	1.3	0.5	0.7
Leukemije (C91-C95) Leukaemias	4.0	4.1	11.6	7.5	4.3	3.1	6.6	0.6	7.9	2.9	0.6	0.0	0.2	1.4	3.9	1.2	3.9	3.3	4.2
Jetra (C22) Liver	2.0	1.1	1.9	2.6	2.6	0.6	2.7	1.1	2.2	0.5	2.3	3.6	0.7	3.1	2.4	4.2	2.0	6.4	7.2
Druge lokalizacije Other sites	72.9	81.2	71.1	84.0	73.5	67.6	74.1	62.3	110.7	48.6	62.6	71.6	100.2	71.8	60.7	53.7	34.9	55.9	78.4
Sve lokalizacije (C00-C97) All sites	240.6	268.8	248.8	253.5	223.6	235.4	203.2	232.8	324.3	163.8	234.7	247.4	238.3	236.4	216.8	217.7	157.2	203.9	247.0
Sve lokalizacije bez kože (C44) All sites but skin (C44)	212.8	227.9	220.6	226.7	196.8	205.9	176.8	210.5	284.1	162.3	222.8	222.3	196.4	220.1	195.9	210.0	151.7	196.6	218.0

Tabela 11. Broj umrlih slučajeva od raka prema vodećim lokalizacijama i okruzima, muškarci, centralna Srbija, 2006. godina

Table 11. Number of death cancer cases by leading primary sites, males, regions in Central Serbia, 2006

Primarne lokalizacije (10-MKB) Primary sites (ICD-10)	O k r u g (R e g i o n)																		
	centralna Srbija	Grad Beograd	Kolubarski	Mačvanski	Raški	Moravički	Zlatiborski	Rasinski	Šumadijski	Pomoravski	Braničevski	Podunavski	Zajčarski	Borski	Nišavski	Pčimjski	Jablanički	Toplički	Pirotski
Pluća i bronh, (C34) Lung and bronchus	2471	760	100	160	115	92	124	147	130	110	110	114	51	55	164	74	89	41	35
Kolon i rektum (C18-C20) Colon and rectum	925	329	27	48	39	36	45	41	49	36	30	36	30	21	75	19	34	9	21
Prostata (C61) Prostate	656	204	18	38	30	26	37	42	28	29	33	25	19	40	27	16	26	6	12
Želudac (C16) Stomach	487	133	21	32	21	22	30	17	32	27	15	17	10	14	27	19	26	12	12
Pankreas (C25) Pancreas	377	123	15	14	22	16	17	20	23	23	5	11	17	11	23	10	18	2	7
Mokraćna bešika (C67) Bladder	359	117	12	19	21	21	23	17	14	21	15	9	14	6	22	8	10	5	5
Jetra (C22) Liver	309	71	19	26	19	13	7	9	9	13	16	11	5	14	32	9	18	7	11
Larinks (C32) Larynx	274	76	10	19	13	15	11	18	5	18	10	16	6	7	18	8	15	6	3
Mozak (C71) Brain	265	75	12	8	18	8	15	17	19	9	9	8	8	9	15	15	15	1	4
Leukemije(C91-C95) Leukaemias	205	66	6	7	8	8	9	14	16	8	3	8	7	7	19	7	4	6	2
Bubreg(C64) Kidney	142	43	6	13	5	8	14	4	4	4	9	9	1	2	8	2	5	1	4
Jednjak(C15) Oesophagus	123	38	1	8	8	8	5	5	11	2	3	6	5	5	7	3	5	2	1
Druge lokalizacije Other sites	1375	493	41	71	72	59	70	67	65	55	32	64	37	38	83	31	52	20	25
Sve lokalizacije (C00-C97) All sites	7968	2528	288	463	391	332	407	418	405	355	290	334	210	229	520	221	317	118	142
Sve lokalizacije bez kože (C44) All sites but skin (C44)	7911	2507	286	462	387	331	402	414	404	351	287	333	209	228	515	220	315	118	142

Tabela 12. Broj umrlih slučajeva od raka prema vodećim lokalizacijama i okruzima, žene, centralna Srbija, 2006. godina

Table 12. Number of death cancer cases by leading primary sites, females, regions in Central Serbia, 2006

Primarne lokalizacije (10-MKB) Primary sites (ICD-10)	O k r u g (R e g i o n)																		
	centralna Srbija	Grad Beograd	Kolubarski	Mačvanski	Raški	Moravički	Zlatiborski	Rasinski	Šumadijski	Pomoravski	Braničevski	Podunavski	Zajčarski	Borski	Nišavski	Pčimjski	Jablanički	Toplički	Pirotski
Dojka (C50) Breast	1079	411	31	49	48	39	51	47	53	46	37	40	26	33	72	26	34	14	22
Pluća i bronh (C34) Lung and bronchus	755	296	24	43	38	20	31	22	48	33	29	45	11	17	36	26	16	11	9
Kolon i rektum (C18-C20) Colon and rectum	712	235	27	30	25	29	36	43	37	33	31	25	22	17	50	24	24	8	16
Grlić materice (C53) Cervix uteri	359	110	8	16	17	22	14	15	24	16	23	12	8	22	17	12	9	10	4
Pankreas (C25) Pancreas	296	121	12	12	18	11	10	17	11	18	5	6	6	9	14	10	7	3	6
Ovarijum (C56) Ovary	296	112	12	13	13	21	9	14	9	10	17	10	9	5	21	9	5	4	3
Želudac (C16) Stomach	283	63	7	26	18	13	12	13	16	18	5	8	5	7	25	18	14	5	10
Mozak (C71) Brain	228	85	9	7	15	9	16	10	13	5	7	8	4	10	8	6	8	5	3
Jetra (C22) Liver	208	52	10	11	9	7	17	15	7	5	9	7	5	15	13	6	5	8	7
Leukemije(C91-C95) Leukaemias	181	68	4	16	5	7	10	15	10	5	3	4	4	4	16	2	4	3	1
Materica, telo(C54) Corpus uteri	160	60	5	4	3	4	4	10	7	8	8	9	4	3	14	8	6	2	1
Žučna kesa (C23) Gallbladder	109	35	5	11	5	2	7	10	5	1	3	6	3	1	3	4	3	5	0
Druge lokalizacije Other sites	1480	523	51	85	54	63	62	79	73	68	55	53	37	49	94	39	55	16	24
Sve lokalizacije (C00-C97) All sites	6146	2171	205	323	268	247	279	310	313	266	232	233	144	192	383	190	190	94	106
Sve lokalizacije bez kože (C44) All sites but skin (C44)	6101	2164	204	321	264	244	277	310	310	264	232	231	141	191	377	189	185	93	104

Tabela 13. Stope mortaliteta od raka na 100.000 stanovnika prema vodećim lokalizacijama i okruzima, muškarci, centralna Srbija, 2006. godina

Table 13. Cancer mortality rates per 100.000 population by leading primary sites, males, regions in Central Serbia, 2006

Primarne lokalizacije (10-MKB) Primary sites (ICD-10)	O k r u g (R e g i o n)																		
	centralna Srbija	Grad Beograd	Kolubarski	Mačvanski	Raški	Moravički	Zlatiborski	Rasinski	Šumadijski	Pomoravski	Braničevski	Podunavski	Zajčarski	Borski	Nišavski	Pčjniški	Jablanički	Toplički	Pirotski
Pluća i bronh, (C34) Lung and bronchus	93.9	100.3	109.1	101.1	78.7	85.1	82.2	119.5	90.6	102.5	116.6	111.9	81.0	81.2	88.1	64.4	76.2	83.0	69.3
Kolon i rektum (C18-C20) Colon and rectum	35.2	43.4	29.5	30.3	26.7	33.3	29.8	33.3	34.2	33.6	31.8	35.3	47.7	31.0	40.3	16.5	29.1	18.2	41.6
Prostata (C61) Prostate	24.9	26.9	19.6	24.0	20.5	24.1	24.5	34.2	19.5	27.0	35.0	24.5	30.2	59.1	14.5	13.9	22.3	12.1	23.8
Želudac (C16) Stomach	18.5	17.5	22.9	20.2	14.4	20.4	19.9	13.8	22.3	25.2	15.9	16.7	15.9	20.7	14.5	16.5	22.3	24.3	23.8
Pankreas (C25) Pancreas	14.3	16.2	16.4	8.8	15.1	14.8	11.3	16.3	16.0	21.4	5.3	10.8	27.0	16.2	12.4	8.7	15.4	4.0	13.9
Mokraćna bešika (C67) Bladder	13.6	15.4	13.1	12.0	14.4	19.4	15.2	13.8	9.8	19.6	15.9	8.8	22.2	8.9	11.8	7.0	8.6	10.1	9.9
Jetra (C22) Liver	11.7	9.4	20.7	16.4	13.0	12.0	4.6	7.3	6.3	12.1	17.0	10.8	7.9	20.7	17.2	7.8	15.4	14.2	21.8
Larinks (C32) Larynx	10.4	10.0	10.9	12.0	8.9	13.9	7.3	14.6	3.5	16.8	10.6	15.7	9.5	10.3	9.7	7.0	12.8	12.1	5.9
Mozak (C71) Brain	10.1	9.9	13.1	5.1	12.3	7.4	9.9	13.8	13.2	8.4	9.5	7.9	12.7	13.3	8.1	13.1	12.8	2.0	7.9
Leukemije(C91-C95) Leukaemias	7.8	8.7	6.5	4.4	5.5	7.4	6.0	11.4	11.2	7.5	3.2	7.9	11.1	10.3	10.2	6.1	3.4	12.1	4.0
Bubreg(C64) Kidney	5.4	5.7	6.5	8.2	3.4	7.4	9.3	3.3	2.8	3.7	9.5	8.8	1.6	3.0	4.3	1.7	4.3	2.0	7.9
Jednjak(C15) Oesophagus	4.7	5.0	1.1	5.1	5.5	7.4	3.3	4.1	7.7	1.9	3.2	5.9	7.9	7.4	3.8	2.6	4.3	4.0	2.0
Druge lokalizacije Other sites	52.3	65.0	44.7	44.9	49.3	54.6	46.4	54.5	45.3	51.3	33.9	62.8	58.8	56.1	44.6	27.0	44.5	40.5	49.5
Sve lokalizacije (C00-C97) All sites	302.8	333.5	314.3	292.5	267.6	307.2	269.8	339.9	282.3	330.9	307.4	327.8	333.7	338.2	279.5	192.5	271.3	238.9	281.2
Sve lokalizacije bez kože (C44) All sites but skin (C44)	300.7	330.7	312.1	291.9	264.8	306.3	266.5	336.7	281.6	327.2	304.2	326.8	332.1	336.7	276.8	191.6	269.6	238.9	281.2

Tabela 14. Stope mortaliteta od raka na 100.000 stanovnika prema vodećim lokalizacijama i okruzima, žene, centralna Srbija, 2006. godina

Table 14. Cancer mortality rates per 100.000 population by leading primary sites, females, regions in Central Serbia, 2006

Primarne lokalizacije (10-MKB) Primary sites (ICD-10)	O k r u g (R e g i o n)																		
	centralna Srbija	Grad Beograd	Kolubarski	Mačvanski	Raški	Moravički	Zlatiborski	Rasinski	Šumadijski	Pomoravski	Braničevski	Podunavski	Zajčarski	Borski	Nišavski	Pčjniški	Jablanički	Toplički	Pirotski
Dojka (C50) Breast	38.8	48.6	32.8	30.3	31.9	34.8	33.1	36.6	35.2	40.2	36.6	38.0	38.8	46.6	37.5	22.7	29.0	28.7	44.3
Pluća i bronh (C34) Lung and bronchus	27.2	35.0	25.4	26.6	25.2	17.9	20.1	17.1	31.9	28.8	28.6	42.7	16.4	24.0	18.8	22.7	13.7	22.5	18.1
Kolon i rektum (C18-C20) Colon and rectum	25.6	27.8	28.6	18.5	16.6	25.9	23.3	33.5	24.6	28.8	30.6	23.7	32.8	24.0	26.0	20.9	20.5	16.4	32.2
Grljić materice (C53) Cervix uteri	12.9	13.0	8.5	9.9	11.3	19.6	9.1	11.7	16.0	14.0	22.7	11.4	11.9	31.1	8.9	10.5	7.7	20.5	8.1
Pankreas (C25) Pancreas	10.7	14.3	12.7	7.4	12.0	9.8	6.5	13.2	7.3	15.7	4.9	5.7	9.0	12.7	7.3	8.7	6.0	6.1	12.1
Ovarijum (C56) Ovary	10.7	13.3	12.7	8.0	8.6	18.7	5.8	10.9	6.0	8.7	16.8	9.5	13.4	7.1	10.9	7.8	4.3	8.2	6.0
Želudac (C16) Stomach	10.2	7.5	7.4	16.1	12.0	11.6	7.8	10.1	10.6	15.7	4.9	7.6	7.5	9.9	13.0	15.7	11.9	10.2	20.1
Mozak (C71) Brain	8.2	10.1	9.5	4.3	10.0	8.0	10.4	7.8	8.6	4.4	6.9	7.6	6.0	14.1	4.2	5.2	6.8	10.2	6.0
Jetra (C22) Liver	7.5	6.2	10.6	6.8	6.0	6.2	11.0	11.7	4.7	4.4	8.9	6.6	7.5	21.2	6.8	5.2	4.3	16.4	14.1
Leukemije(C91-C95) Leukaemias	6.5	8.0	4.2	9.9	3.3	6.2	6.5	11.7	6.6	4.4	3.0	3.8	6.0	5.7	8.3	1.7	3.4	6.1	2.0
Materica, telo(C54) Corpus uteri	5.8	7.1	5.3	2.5	2.0	3.6	2.6	7.8	4.7	7.0	7.9	8.5	6.0	4.2	7.3	7.0	5.1	4.1	2.0
Žučna kesa (C23) Gallbladder	3.9	4.1	5.3	6.8	3.3	1.8	4.5	7.8	3.3	0.9	3.0	5.7	4.5	1.4	1.6	3.5	2.6	10.2	0.0
Druge lokalizacije Other sites	53.3	61.9	54.0	52.6	35.9	56.2	40.2	61.5	48.5	59.4	54.3	50.3	55.2	69.3	49.0	34.0	46.9	32.8	48.3
Sve lokalizacije (C00-C97) All sites	221.3	257.0	217.2	199.7	177.9	220.5	180.9	241.5	208.1	232.5	229.2	221.2	214.9	271.4	199.5	165.5	162.1	192.5	213.5
Sve lokalizacije bez kože (C44) All sites but skin (C44)	219.6	256.1	216.2	198.5	175.3	217.8	179.6	241.5	206.1	230.7	229.2	219.3	210.4	270.0	196.4	164.7	157.9	190.4	209.5

Tabela 15. Standardizovane stope mortaliteta od raka na 100.000 stanovnika prema vodećim lokalizacijama i okruzima, muškarci centralna Srbija, 2006. godina

Table 15. Standardized cancer mortality rates per 100.000 population by leading primary sites, males, regions in Central Serbia, 2006

Primarne lokalizacije (10-MKB) Primary sites (ICD-10)	O k r u g (R e g i o n)																		
	centralna Srbija	Grad Beograd	Kolubarski	Mačvanski	Raški	Moravički	Zlatiborski	Rasinski	Šumadijski	Pomoravski	Braničevski	Podunavski	Zajčarski	Borski	Nišavski	Pčinjski	Jablanički	Toplički	Pirotski
Pluća i bronh. (C34) Lung and bronchus	52.5	56.2	58.3	58.8	51.2	43.5	46.6	63.7	52.1	53.9	66.9	63.6	39.4	44.0	46.2	45.9	42.8	48.0	37.4
Kolon i rektum (C18-C20) Colon and rectum	18.0	23.1	14.6	16.3	15.6	15.6	16.8	17.2	17.2	15.1	14.3	20.3	16.7	13.6	19.4	11.0	15.7	9.3	16.4
Prostata (C61) Prostate	10.7	12.4	8.1	10.7	10.1	10.1	10.9	12.8	8.8	9.4	12.1	11.5	10.7	24.2	5.7	8.5	10.1	5.1	7.1
Želudac (C16) Stomach	9.9	9.6	10.8	12.1	8.8	8.1	11.5	7.0	11.3	13.8	7.8	9.5	7.6	11.8	7.8	11.1	12.0	12.3	11.7
Pankreas (C25) Pancreas	7.8	8.9	9.0	4.8	9.8	7.9	6.8	8.4	8.8	10.8	1.9	5.3	13.1	9.0	6.4	5.9	9.6	1.7	5.3
Mokraćna bešika (C67) Bladder	6.6	7.9	5.0	5.4	8.9	9.0	7.7	5.9	5.1	8.8	6.1	4.0	7.4	5.1	6.2	4.3	4.2	4.7	3.2
Jetra (C22) Liver	6.1	5.0	10.2	9.0	8.4	5.0	3.0	4.6	3.2	6.5	7.6	5.4	2.4	10.1	7.7	5.3	7.6	7.4	11.0
Larinks (C32) Larynx	5.9	5.9	6.8	7.3	5.7	6.6	4.5	7.5	2.1	9.3	6.1	9.4	3.9	5.6	5.2	4.9	7.0	6.7	2.8
Mozak (C71) Brain	6.6	6.5	6.3	4.3	9.0	4.5	5.6	9.2	8.4	6.8	4.6	6.0	5.4	9.7	5.7	10.5	9.0	1.0	4.5
Leukemije(C91-C95) Leukaemias	4.3	4.6	3.2	2.5	3.3	3.7	3.4	5.2	7.2	4.1	2.6	4.3	4.4	5.0	5.7	5.8	1.9	6.9	1.9
Bubreg(C64) Kidney	3.1	3.3	3.6	4.6	2.2	4.1	5.5	1.8	1.8	1.2	4.8	5.7	0.8	1.4	2.0	2.0	2.5	1.8	4.3
Jednjak(C15) Oesophagus	2.6	2.8	0.6	3.0	3.3	4.3	2.0	2.3	4.4	1.0	2.0	4.1	2.7	3.6	2.1	1.8	1.8	2.2	0.5
Druge lokalizacije Other sites	29.6	37.1	24.8	26.6	32.3	29.3	28.4	28.5	25.6	27.6	20.7	39.5	25.5	32.9	22.3	18.6	25.0	20.7	26.6
Sve lokalizacije (C00-C97) All sites	163.9	183.3	161.2	165.6	168.4	151.6	152.6	174.0	156.0	168.4	157.6	188.4	139.9	175.9	142.6	135.6	149.1	127.9	132.7
Sve lokalizacije bez kože (C44) All sites but skin (C44)	162.8	181.7	159.9	165.4	167.0	151.3	151.0	172.3	155.3	167.4	156.8	187.5	139.6	175.0	141.5	135.1	148.4	127.9	132.7

Tabela 16. Standardizovane stope mortaliteta od raka na 100.000 stanovnika prema vodećim lokalizacijama i okruzima, žene, centralna Srbija, 2006. godina

Table 16. Standardized cancer mortality rates per 100.000 population by leading primary sites, females, regions in Central Serbia, 2006

Primarne lokalizacije (10-MKB) Primary sites (ICD-10)	O k r u g (R e g i o n)																		
	centralna Srbija	Grad Beograd	Kolubarski	Mačvanski	Raški	Moravički	Zlatiborski	Rasinski	Šumadijski	Pomoravski	Braničevski	Podunavski	Zajčarski	Borski	Nišavski	Pčinjski	Jablanički	Toplički	Pirotski
Dojka (C50) Breast	19.1	23.7	17.8	14.6	19.8	17.5	17.4	17.0	16.9	17.2	15.8	21.4	15.9	19.2	18.9	14.6	14.9	12.1	18.4
Pluća i bronh (C34) Lung and bronchus	13.8	18.0	12.9	14.2	14.6	7.9	11.4	7.3	16.0	14.8	13.2	22.5	7.4	12.2	7.4	15.9	5.6	12.9	9.1
Kolon i rektum (C18-C20) Colon and rectum	11.0	12.9	13.4	8.2	7.9	11.8	10.6	14.0	9.9	11.9	9.1	8.8	12.3	9.2	10.5	10.1	8.6	4.8	11.2
Grljic materice (C53) Cervix uteri	7.3	6.8	4.4	5.9	6.8	11.2	5.1	6.6	9.0	7.0	13.7	7.2	6.2	19.1	5.6	7.8	4.8	10.7	2.6
Pankreas (C25) Pancreas	4.7	6.5	6.8	3.0	7.1	4.2	3.0	5.7	2.8	5.5	1.6	2.9	2.9	4.3	3.1	4.8	1.9	1.4	3.7
Övarijum (C56) Ovary	5.7	7.2	6.4	5.1	5.9	9.5	2.5	4.4	3.1	3.1	7.8	5.7	6.2	4.1	6.2	4.8	2.3	3.5	4.3
Želudac (C16) Stomach	4.6	3.6	4.5	7.8	5.5	5.8	3.8	4.0	4.9	5.9	1.9	3.4	1.9	3.0	5.3	9.7	5.0	3.3	7.0
Mozak (C71) Brain	4.5	5.5	5.4	2.7	5.7	4.2	5.0	3.7	4.5	4.6	4.0	4.8	2.9	8.9	2.2	3.2	3.4	3.9	3.8
Jetra (C22) Liver	3.1	2.8	4.1	3.3	3.4	2.0	4.5	4.0	1.8	1.9	3.1	2.6	3.2	7.2	2.0	3.4	1.8	4.7	6.1
Leukemije(C91-C95) Leukaemias	3.8	4.2	2.4	4.7	2.5	4.0	4.7	7.6	3.7	3.2	1.9	3.7	1.8	6.2	3.8	0.9	2.5	3.1	2.0
Materica, telo(C54) Corpus uteri	2.6	3.0	2.3	1.1	1.4	2.0	1.3	3.1	2.2	3.0	3.0	4.9	1.9	1.3	3.3	4.6	2.4	1.0	0.4
Žučna kesa (C23) Gallbladder	1.6	1.7	2.0	2.5	1.4	1.0	2.3	3.0	1.9	0.5	0.8	2.2	2.5	0.7	0.5	1.8	1.0	2.9	0.0
Druge lokalizacije Other sites	24.1	28.2	23.2	26.7	18.7	25.0	19.0	24.9	21.7	24.3	22.9	22.5	24.5	31.4	22.2	20.1	22.6	13.8	15.5
Sve lokalizacije (C00-C97) All sites	105.8	124.2	105.5	99.9	100.8	105.9	90.8	105.3	98.4	102.9	99.1	112.4	89.5	126.9	91.0	101.8	76.9	78.1	84.0
Sve lokalizacije bez kože (C44) All sites but skin (C44)	105.3	123.9	104.6	99.5	99.8	105.3	90.4	105.3	97.9	102.6	99.1	112.0	88.7	126.5	90.2	101.5	75.7	76.6	83.3

Tabela 17. Ukupan broj novoobolelih i broj novoobolelih od raka sa procentom registrovanih samo na osnovu prijave smrti, prema primarnoj lokalizaciji i polu, centralna Srbija, 2006. godina

Table 17. Total number of new cancer cases and number and percentage of cases registered from death certificates only, by primary site and sex, Central Serbia, 2006

MKB-10 (ICD-10) Šifra (Code) Ukupno (All)	Primarna lokalizacija Primary site	POL SEX M (Male) Ž (Female)	Ukupno (All) 12835 11758	Broj registrovanih samo na osnovu prijave smrti Number of cases registered from death certificates only		%
				400 325	3.1% 2.8%	
C00	Usna Lip	M	91	2	2.2%	
		Ž	36	0	0.0%	
C01	Jezik, koren Base of tongue	M	41	1	2.4%	
		Ž	11	0	0.0%	
C02	Jezik, drugi delovi Tongue, other & unspecified parts	M	37	2	5.4%	
		Ž	8	0	25.0%	
C03	Desni Gum	M	6	0	0.0%	
		Ž	5	0	0.0%	
C04	Pod usta Floor of mouth	M	32	1	3.1%	
		Ž	11	0	0.0%	
C05	Nepece Palate	M	14	0	0.0%	
		Ž	7	0	0.0%	
C06	Usta, drugi delovi Mouth, other & unspecified parts	M	20	0	0.0%	
		Ž	25	1	4.0%	
C07	Parotidna žlezda Parotid gland	M	33	1	3.0%	
		Ž	26	2	7.7%	
C08	Pljuvačna žlezda Other & unspec. major salivary gl.	M	11	0	0.0%	
		Ž	12	0	0.0%	
C09	Krajnik Tonsil	M	33	1	3.0%	
		Ž	13	0	0.0%	
C10	Orofaringis Oropharynx	M	19	2	10.5%	
		Ž	6	1	16.7%	
C11	Nasofaringis Nasopharynx	M	17	2	11.8%	
		Ž	13	1	7.7%	
C12	Piriformni sinus Pyriiform sinus	M	2	0	0.0%	
		Ž	2	0	0.0%	
C13	Hipofaringis Hypopharynx	M	71	1	1.4%	
		Ž	16	0	0.0%	
C14	Usne, usta, ždrello, drugi delovi Other and ill def. sites in the lip, oral cavity & pharynx	M	18	1	5.6%	
		Ž	2	0	0.0%	
C15	Jednjak Oesophagus	M	123	8	6.5%	
		Ž	45	2	4.4%	
C16	Želudac Stomach	M	542	29	5.4%	
		Ž	348	20	5.7%	
C17	Tanko crevo Small intestine	M	22	0	0.0%	
		Ž	20	2	10.0%	
C18	Debelo crevo Colon	M	735	22	3.0%	
		Ž	511	25	4.9%	
C19	Rektosigmoidni prelaz Rectosigmoid junction	M	107	4	3.7%	
		Ž	73	3	4.1%	
C20	Rektum Rectum	M	637	21	3.3%	
		Ž	422	17	4.0%	
C21	Anus i analni kanal Anus & anal canal	M	16	0	0.0%	
		Ž	12	2	16.7%	
C22	Jetra, žučni kanali Liver & intrahepatic bile ducts	M	210	18	8.6%	
		Ž	128	9	7.0%	
C23	Žučna kesha Gallbladder	M	44	0	0.0%	
		Ž	97	8	8.2%	
C24	Žučni kanali, drugi delovi Biliary tract, other & unspec. parts	M	29	3	10.3%	
		Ž	33	1	3.0%	
C25	Pankreas Pancreas	M	266	18	6.8%	
		Ž	208	13	6.3%	
C26	Org. za var., ned. odred. lok. Other & ill-defined digestive organs	M	33	0	0.0%	
		Ž	23	1	4.3%	
C30	Nosna šupljina i srednje uvo Nasal cavity & middle ear	M	13	0	0.0%	
		Ž	7	0	0.0%	
C31	Nosni sinusi Accessory sinuses	M	26	2	7.7%	
		Ž	9	0	0.0%	
C32	Larings Larynx	M	578	14	2.4%	
		Ž	67	1	1.5%	
C33	Traheja Trachea	M	20	0	0.0%	
		Ž	9	0	0.0%	
C34	Bronh i pluća Bronchus & lung	M	2735	125	4.6%	
		Ž	778	49	6.3%	
C37	Timus Thymus	M	0	0	0.0%	
		Ž	6	0	0.0%	
C38	Srce, mediastinum, pleura Heart, mediastinum & pleura	M	31	3	9.7%	
		Ž	17	0	0.0%	
C39	Toraks, druge lokalizacije Other & ill-def. in the res.sys.	M	3	0	0.0%	
		Ž	6	0	0.0%	
C40	Kosti i zglobovi, hrskavice udova Bone & articular cartilage of limbs	M	34	0	0.0%	
		Ž	31	1	3.2%	
C41	Kosti i zglobovi, hrskav., dr. lok. Bone & articular cartilage of other	M	24	0	0.0%	
		Ž	38	1	2.6%	
C43	Koža, maligni melanom Malignant melanoma of skin	M	145	0	0.0%	
		Ž	130	0	0.0%	
C44	Koža, drugi mal. tumori Skin, other malignomas	M	1731	1	0.1%	
		Ž	1633	3	0.2%	
C45	Mezoteliom Mesothelioma	M	7	0	0.0%	
		Ž	4	0	0.0%	
C46	Kaposijev sarkom Kaposi's sarcoma	M	4	0	0.0%	
		Ž	1	0	0.0%	
C47	Periferni nervi i aut. ner. sis. Peripheral nerves & auton. nerv. sys.	M	7	0	0.0%	
		Ž	9	0	0.0%	
C48	Peritoneum i retroperitoneum Retroperitoneum & peritoneum	M	18	0	0.0%	
		Ž	26	0	0.0%	
C49	Vezivna i meka tkiva, drugi Other connective and soft tissue	M	89	1	1.1%	
		Ž	68	3	4.4%	
C50	Dojka Breast	M	56	1	1.8%	
		Ž	2784	56	2.0%	

Tabela 17.1 Ukupan broj novoobolelih i broj novoobolelih od raka sa procentom registrovanih samo na osnovu prijave smrti, prema primarnoj lokalizaciji i polu, centralna Srbija, 2006. godina (nastavak)
 Table 17.1 Total number of new cancer cases and number and percentage of cases registered from death certificates only, by primary site and sex, Central Serbia, 2006 (continued)

MKB-10 (ICD-10) Sifra (Code) Ukupno (All)	Primarna lokalizacija Primary site	POL SEX M (Male) Z (Female)	Ukupno (All) 12835 11758	Broj registrovanih samo na osnovu prijave smrti Number of cases registered from death certificates only		%
				400	325	
C51	Vulva Vulva	Ž	83	2	2	2.4%
C52	Vagina Vagina	Ž	24	0	0	0.0%
C53	Črlič materice Cervix uteri	Ž	1053	15	15	1.4%
C54	Materica, telo Corpus uteri	Ž	646	15	15	2.3%
C55	Materica, neoznačeni deo Uterus, unspecified part	Ž	27	4	4	14.8%
C56	Jajnik Ovary	Ž	428	12	12	2.8%
C57	Ženski gen.org., dr. neoz. lok. Other & unspec.parts of fem.gen.org.	Ž	24	1	1	4.2%
C58	Placenta Placenta	Ž	2	0	0	0.0%
C60	Penis Penis	M	30	1	1	3.3%
C61	Prostata Prostate	M	1330	34	34	2.6%
C62	Testis Testis	M	173	3	3	1.7%
C63	Muški gen. org., dr. neoz. org. Other & unspec. male genital organs	M	4	0	0	0.0%
C64	Bubreg Kidney, except renal pelvis	M Ž	287 170	5 4	5 4	1.7% 2.4%
C65	Bubrežna karlica Renal pelvis	M Ž	33 26	1 1	1 1	3.0% 3.8%
C66	Ureter Ureter	M Ž	29 16	0 0	0 0	0.0% 0.0%
C67	Mokraćna bešika Bladder	M Ž	848 242	13 5	13 5	1.5% 2.1%
C68	Urinarni organi, dr. neoz. org. Other & unspecified urinary organs	M Ž	5 5	0 0	0 0	0.0% 0.0%
C69	Oko, pripoji oka Eye and adnexa	M Ž	46 38	1 0	1 0	2.2% 0.0%
C70	Moždance Meninges	M Ž	29 36	3 1	3 1	10.3% 2.8%
C71	Mozak Brain	M Ž	343 255	21 10	21 10	6.1% 3.9%
C72	Centralni ner. sis., dr. delovi Spinal cord, cran. nerv. & oth. parts of CNS	M Ž	11 7	2 0	2 0	18.2% 0.0%
C73	Štitasta žlezda Thyroid gland	M Ž	45 153	0 3	0 3	0.0% 2.0%
C74	Nadbubrežna žlezda Adrenal gland	M Ž	9 15	0 1	0 1	0.0% 6.7%
C75	Endokrine žlezde, druge Other endocrine glands & related structures	M Ž	8 14	0 0	0 0	0.0% 0.0%
C76	Ostale lokalizacije Other & ill defined sites	M Ž	36 63	3 2	3 2	8.3% 3.2%
C77-C80	Sekundarne lok., bez ozn. lok. Unspec. mal.neo.of lymph nod. & without of spec.of site	M Ž	298 238	12 13	12 13	4.0% 5.5%
C81	Hodgkinova bolest Hodgkin's disease	M Ž	63 61	1 0	1 0	1.6% 0.0%
C82	Ne-Hodgkinov lim., folikularni Follicular non-Hodgkin's lymphoma	M Ž	50 57	2 2	2 2	4.0% 3.5%
C83	Ne-Hodgkinov lim., difuzni Diffuse non-Hodgkin's lymphoma	M Ž	44 44	0 0	0 0	0.0% 0.0%
C84	Periferni i kožni lim. T-ćelija Peripheral & cutaneous T-cell lymphomas	M Ž	6 6	0 0	0 0	0.0% 0.0%
C85	Ne-Hodgkinovi limfomi, drugi Other & unspecified types of non-Hodgkin's lymphoma	M Ž	99 64	0 1	0 1	0.0% 1.6%
C88	Zloćudne imunoprolifer. bolesti Malignant immunoproliferative diseases	M Ž	3 0	0 0	0 0	0.0% 0.0%
C90	Mult. mijelom i zloć. tum. plaz. ćel. Multiple myeloma and malignant plasma cell neoplasms	M Ž	50 59	2 2	2 2	4.0% 3.4%
C91	Limfoidna leukemija Lymphoblastic, lymphoid leukaemia	M Ž	111 76	1 3	1 3	0.9% 3.9%
C92	Mijeloidna leukemija Myeloid leukaemia	M Ž	74 61	7 1	7 1	9.5% 1.6%
C93	Monocitna leukemija Monocytic leukaemia	M Ž	6 4	0 0	0 0	0.0% 0.0%
C94	Leukemije, druge Other leukaemias of specified cells	M Ž	2 3	0 0	0 0	0.0% 0.0%
C95	Leukemije, neoznačene Leukaemia, unspecified cell type	M Ž	32 21	4 3	4 3	12.5% 14.3%
C96	Dr. zloć. tum. hematop. sist. Other & unspec. mal.neoplasm of lymphoid, haemato. & related tissue	M Ž	1 1	0 0	0 0	0.0% 0.0%
C00-C96 (C44)	Sve lokalizacije, bez kože All sites but skin	M Ž	11104 10125	399 322	399 322	3.6% 3.2%

Tabela 18. Broj novoobolelih slučajeva od raka, prema primarnoj lokalizaciji (MKB-10), uzrastu i polu, centralna Srbija, 2006. godina

Table 18. Number of new cancer cases by primary site (ICD-10), age and sex, Central Serbia, 2006

MKB-10 (ICD-10) Šifra (Code)	Primarna lokalizacija Primary site	POL SEX M (Male) Ž (Female)	Ukupno (All) 12835 11758	U Z R A S T (A g e)																	%
				0-4	5-9	10-14	15-19	20-24	25-29	30-34	35-39	40-44	45-49	50-54	55-59	60-64	65-69	70-74	75+		
C00	Usna Lip	M Ž	91 36	-	-	-	-	1	-	-	1	-	1	7	8	10	18	19	26	0.7%	
C01	Jezik, koren Base of tongue	M Ž	41 11	-	-	-	1	-	-	-	-	-	3	6	7	4	10	1	4	5	0.3%
C02	Jezik, drugi delovi Tongue, other & unspecified parts	M Ž	37 8	-	-	-	-	-	-	1	-	2	3	6	6	4	7	5	3	0.3%	
C03	Desni Gum	M Ž	6 5	-	-	-	-	-	-	-	1	-	-	-	-	-	-	1	4	-	0.0%
C04	Pod usta Floor of mouth	M Ž	32 11	-	-	-	-	-	-	-	-	-	3	5	7	6	5	2	4	0.2%	
C05	Nepece Palate	M Ž	14 7	-	-	-	-	-	-	1	-	2	3	3	3	1	-	2	1	0.1%	
C06	Usta, drugi delovi Mouth, other & unspecified parts	M Ž	20 25	-	-	-	-	-	1	1	3	4	1	2	2	1	2	2	6	0.2%	
C07	Parotidna žlezda Parotid gland	M Ž	33 26	-	-	-	-	-	-	3	1	1	2	3	3	3	3	10	9	0.3%	
C08	Pljuvačna žlezda Other & unspec. major salivary gl.	M Ž	11 12	-	-	-	-	-	-	-	-	2	2	1	4	1	2	-	1	-	0.1%
C09	Krajnik Tonsil	M Ž	33 13	-	-	-	-	-	-	-	-	1	1	5	-	8	2	1	9	6	0.3%
C10	Orofarings Oropharynx	M Ž	19 6	-	-	-	-	-	-	-	-	-	-	5	4	4	2	2	2	0.1%	
C11	Nasofarings Nasopharynx	M Ž	17 13	-	1	-	-	-	-	1	-	2	1	3	6	2	-	1	1	0.1%	
C12	Piriformni sinus Pyriform sinus	M Ž	2 2	-	-	-	-	-	-	-	-	-	1	-	-	-	1	-	-	-	0.0%
C13	Hipofarings Hypopharynx	M Ž	71 16	-	-	-	-	-	-	-	-	1	11	13	16	6	12	7	5	0.6%	
C14	Usne, usta, ždrelo, drugi delovi Other and ill def.sites in the lip,oral cavity&ph	M Ž	18 2	-	-	-	-	-	-	-	1	-	1	4	4	2	4	-	3	0.1%	
C15	Jednjak Oesophagus	M Ž	123 45	-	-	-	-	-	2	-	1	10	21	24	15	19	13	18	18	1.0%	
C16	Želudac Stomach	M Ž	542 348	-	-	-	-	1	2	3	4	13	18	35	30	23	57	71	91	3.0%	
C17	Tanko crevo Small intestine	M Ž	22 20	-	-	-	-	-	-	1	-	-	1	2	2	2	4	5	5	0.2%	
C18	Debelo crevo Colon	M Ž	735 511	-	-	-	-	4	3	6	10	14	20	63	105	77	112	167	154	5.7%	
C19	Rektosigmoidni prelaz Rectosigmoid junction	M Ž	107 73	-	-	-	-	-	-	2	1	3	3	7	14	18	19	19	21	0.8%	
C20	Rektum Rectum	M Ž	637 422	-	-	-	-	2	2	1	8	9	30	59	87	84	98	123	136	5.0%	
C21	Anus i analni kanal Anus & anal canal	M Ž	16 12	-	-	-	-	-	-	-	1	1	1	3	1	2	4	4	4	0.1%	
C22	Jetra, žučni kanali Liver & intrahepatic bile ducts	M Ž	210 128	1	-	-	1	1	2	-	1	5	4	15	22	29	38	33	58	1.6%	
C23	Žučna kesha Gallbladder	M Ž	44 97	-	-	-	-	-	-	-	-	2	4	6	9	7	11	10	10	0.3%	
C24	Žučni kanali, drugi delovi Biliary tract, other & unspec. parts	M Ž	29 33	-	-	-	-	-	-	1	-	2	1	3	2	5	5	14	14	0.3%	
C25	Pankreas Pancreas	M Ž	266 208	-	-	-	-	-	1	1	1	3	11	18	21	21	29	45	56	1.8%	
C26	Org. za var., ned. odrež. lok. Other & ill-defined digestive organs	M Ž	33 23	-	-	-	-	-	-	-	-	-	1	2	10	2	6	5	7	0.3%	
C30	Nosna šupljina i srednje uvo Nasal cavity & middle ear	M Ž	13 7	-	-	-	-	-	-	1	-	-	1	-	-	1	3	4	3	0.1%	
C31	Nosni sinusi Accessory sinuses	M Ž	26 9	-	-	-	-	-	1	-	1	2	1	6	4	2	4	5	5	0.2%	
C32	Larings Larynx	M Ž	578 67	-	-	-	-	-	2	-	4	22	45	84	105	87	91	84	54	4.5%	
C33	Traheja Trachea	M Ž	20 9	-	-	-	1	-	-	-	1	1	-	4	4	-	4	4	1	0.2%	
C34	Bronh i pluća Bronchus & lung	M Ž	2735 778	-	-	-	-	2	4	5	13	42	167	380	481	387	446	440	368	21.3%	
C37	Timus Thymus	M Ž	0 6	-	-	-	-	-	-	1	-	-	-	-	2	2	1	-	-	0.0%	
C38	Srce, mediastinum, pleura Heart, mediastinum & pleura	M Ž	31 17	-	1	-	-	-	-	-	-	-	1	5	9	5	4	2	4	0.2%	
C39	Toraks, druge lokalizacije Other & ill-def. in the res.sys.	M Ž	3 6	-	-	-	-	-	-	-	-	-	1	-	-	-	-	1	-	0.0%	
C40	Kosti i zglobovi, hrskavice udova Bone & articular cartilage of limbs	M Ž	34 31	-	-	3	6	1	1	1	-	1	3	6	3	2	2	2	3	0.3%	
C41	Kosti i zglobovi, hrskavice, dr. lok. Bone & articular cartilage of other	M Ž	24 38	1	-	1	2	1	1	1	-	1	-	2	4	1	4	2	2	0.2%	
C43	Koža, maligni melanom Malignant melanoma of skin	M Ž	145 130	-	-	-	-	1	4	6	1	11	10	17	13	15	23	17	27	1.1%	
C44	Koža, drugi maligni tumori Skin, other malignomas	M Ž	1731 1633	-	-	-	-	2	2	10	9	21	39	67	108	157	173	303	326	13.5%	
C45	Mezoteliom Mesothelioma	M Ž	7 4	-	-	-	-	-	-	-	-	-	-	2	2	1	-	1	-	0.1%	
C46	Kaposijev sarkom Kaposi's sarcoma	M Ž	4 1	-	-	-	-	-	-	1	-	-	-	-	1	-	-	-	2	0.0%	
C47	Periferni nervi i aut. ner. sis. Peripheral nerves & auton. nerv. sys.	M Ž	7 9	-	-	-	-	-	-	1	1	-	1	2	1	1	1	1	1	0.1%	
C48	Peritoneum i retroperitoneum Retroperitoneum & peritoneum	M Ž	18 26	-	-	-	1	-	-	1	1	-	1	1	1	1	2	6	3	0.1%	
C49	Vezivna i meka tkiva, drugi Other connective and soft tissue	M Ž	89 68	1	1	1	5	1	2	1	4	1	6	8	6	14	14	14	10	0.7%	
C50	Dojka Breast	M Ž	56 2784	-	-	1	-	1	9	33	76	187	279	385	422	304	389	326	372	23.7%	

Tabela 18.1 Broj novoobolelih slučajeva od raka, prema primarnoj lokalizaciji (MKB-10), uzrastu i polu, centralna Srbija, 2006. godina (nastavak)

Table 18.1 Number of new cancer cases by primary site (ICD-10), age and sex, Central Serbia, 2006 (continued)

MKB-10 (ICD-10) Šifra (Code) Ukupno (All)	Primarna lokalizacija Primary site	POL SEX M (Male) Ž (Female)	Ukupno (All) 12835 11758	U (Z R A S T (A g e))																	%
				0-4	5-9	10-14	15-19	20-24	25-29	30-34	35-39	40-44	45-49	50-54	55-59	60-64	65-69	70-74	75+		
C51	Vulva	Ž	83	-	-	-	-	-	-	-	1	-	4	5	10	12	7	12	11	21	0.7%
C52	Vagina	Ž	24	-	-	-	-	-	-	-	-	-	-	2	2	3	3	5	4	5	0.2%
C53	Grlić materice Cervix uteri	Ž	1053	-	-	-	-	1	14	39	96	127	143	164	146	73	75	83	92		9.0%
C54	Materica, telo Corpus uteri	Ž	646	-	-	-	-	-	-	6	6	14	50	93	111	101	106	72	87		5.5%
C55	Materica, neoznačeni deo Uterus, unspecified part	Ž	27	-	-	-	-	-	-	-	2	-	2	4	4	5	1	5	4		0.2%
C56	Jajnik Ovary	Ž	428	-	-	1	-	6	6	8	15	28	39	56	57	41	62	62	47		3.6%
C57	Ženski gen.org., dr. neoz. lok. Other & unsp. parts of fem. gen.org.	Ž	24	-	-	-	-	-	-	1	-	-	3	6	5	2	-	4	3		0.2%
C58	Placenta Placenta	Ž	2	-	-	-	-	-	-	-	-	-	-	1	1	-	-	-	-		0.0%
C60	Penis Penis	M	30	-	-	-	-	-	-	-	-	-	-	3	3	3	5	5	3	8	0.2%
C61	Prostata Prostate	M	1330	-	-	-	1	-	-	-	-	1	7	33	54	123	262	346	503		10.4%
C62	Testis Testis	M	173	1	1	-	9	22	25	37	18	17	17	10	7	3	-	1	5		1.3%
C63	Muški gen. org., dr. neoz. org. Other & unsp. male genital organs	M	4	-	-	-	-	-	1	-	-	-	-	-	1	-	1	-	1		0.0%
C64	Bubreg Kidney, except renal pelvis	M	287	2	1	-	1	2	1	1	5	7	22	36	50	29	46	34	50		2.2%
C65	Bubrežna karlica Renal pelvis	M	33	-	-	-	-	-	-	-	-	-	3	3	4	3	1	9	10		0.3%
C66	Ureter Ureter	M	29	-	-	-	-	-	-	-	-	-	-	2	2	-	5	13	7		0.2%
C67	Mokraćna bešika Bladder	M	848	-	-	-	-	-	3	4	2	13	25	72	81	91	146	176	235		6.6%
C68	Urinarni organi, dr. neoz. org. Other & unspecified urinary organs	M	5	-	-	-	-	-	-	1	-	-	-	1	-	-	1	1	1		0.0%
C69	Oko, pripojni oka Eye and adnexa	M	46	2	1	1	-	-	1	1	3	1	2	6	1	5	9	6	7		0.4%
C70	Moždance Meninges	M	29	1	-	-	1	1	-	1	-	2	3	2	5	4	4	2	3		0.2%
C71	Mozak Brain	M	343	6	4	5	5	8	8	12	17	13	24	44	51	40	42	42	22		2.7%
C72	Centralni ner. sis., dr. delovi Spinal cord, cran. nerv. & oth. parts of CNS	M	11	-	-	-	-	-	2	1	2	1	-	1	1	1	2	1	2		0.1%
C73	Štitasta žlezda Thyroid gland	M	45	-	-	-	1	1	-	1	3	1	4	6	8	5	5	7	4		0.4%
C74	Nadbubrežna žlezda Adrenal gland	M	9	-	-	-	1	-	1	1	2	1	2	1	3	-	1	-	2		0.1%
C75	Endokrine žlezde, druge Other endocrine glands & related structures	M	8	-	-	-	-	1	-	1	1	4	-	2	1	1	2	2	2		0.1%
C76	Ostale lokalizacije Other & ill defined sites	M	36	-	-	-	-	-	-	1	-	2	3	3	3	7	8	4	5		0.3%
C77-C80	Sekundarne lok., bez ozn. lok. Unspec. mal. neo. of lymph. nod. & without of spec	M	298	2	1	3	1	4	4	2	15	7	17	27	37	30	56	48	44		2.3%
C81	Hodgkinova bolest Hodgkin's disease	M	63	-	2	1	2	4	7	3	2	4	6	4	13	6	4	5	-		0.5%
C82	Ne-Hodgkinov lim., folikularni Follicular non-Hodgkin's lymphoma	M	50	-	-	-	1	-	2	1	3	5	4	4	4	10	10	6	4		0.4%
C83	Ne-Hodgkinov lim., difuzni Diffuse non-Hodgkin's lymphoma	M	44	-	1	-	-	2	3	1	2	3	-	2	7	5	4	6	8		0.3%
C84	Periferni i kožni lim. T-ćelija Peripheral & cutaneous T-cell lymphomas	M	6	-	-	-	2	-	-	-	-	-	1	1	1	-	2	-	1		0.0%
C85	Ne-Hodgkinovi limfomi, drugi Other & unsp. types of non-Hodgkin's lymph	M	99	1	2	1	4	2	2	1	3	7	6	9	9	8	14	12	18		0.8%
C88	Zloćudne imunoprolifer. bolesti Malignant immunoproliferative diseases	M	3	-	-	-	-	-	-	1	-	-	-	-	-	-	-	-	1		0.0%
C90	Mult. mijelom i zloć. tum. plaz. ćel. Multiple myeloma and malignant plasma cell n	M	50	-	-	-	-	-	-	-	-	2	2	10	2	9	7	11	7		0.4%
C91	Limfoidna leukemija Lymphoblastic, lymphoid leukaemia	M	111	7	5	3	1	-	3	2	2	5	6	11	12	14	20	20	20		0.9%
C92	Mijeloidna leukemija Myeloid leukaemia	M	74	-	2	2	4	1	-	5	2	2	4	7	6	6	8	14	11		0.6%
C93	Monocitna leukemija Monocytic leukaemia	M	6	-	-	-	-	-	-	-	-	-	2	-	-	-	1	-	3		0.0%
C94	Leukemije, druge Other leukaemias of specified cells	M	2	-	-	-	-	-	-	-	-	-	1	-	1	-	-	-	-		0.0%
C95	Leukemije, neoznačene Leukaemia, unspecified cell type	M	32	1	1	-	-	-	-	-	-	1	3	2	2	4	3	6	9		0.2%
C96	Dr. zloć. tum. hematop. sist. Other & unsp. mal. neo. of lym., haem. & tissue	M	1	-	-	-	-	-	-	-	-	-	-	-	1	-	-	-	-		0.0%
C00-C96 (C44)	Sve lokalizacije, bez kože All sites but skin	M	11104	25	25	22	49	59	80	108	143	227	549	1130	1459	1344	1769	1970	2145		86.5%
		Ž	10125	17	15	16	40	50	92	181	327	530	781	1236	1329	1033	1353	1419	1706		86.1%

Tabela 19. Incidencija od raka na 100.000 stanovnika prema primarnoj lokalizaciji (MKB-10), uzrastu i polu, centralna Srbija, 2006. godina

Table 19. Cancer incidence rates per 100.000 population by primary site (ICD-10), age and sex, Central Serbia, 2006

MKB-10 (ICD-10) Šifra (Code) Ukupno (All)	Primarna lokalizacija Primary site	POL SEX	Sirova inc. CR	U Z R A S T (A g e)																Stand. inc. ASR			
				0-4	5-9	10-14	15-19	20-24	25-29	30-34	35-39	40-44	45-49	50-54	55-59	60-64	65-69	70-74	75+				
				M (Male)	Ž (Female)	M	Ž	M	Ž	M	Ž	M	Ž	M	Ž	M	Ž	M	Ž		M	Ž	
C00	Usna Lip	M Ž	3.5 1.3	-	-	-	-	0.5	-	-	0.5	-	0.6	-	0.5	3.2	4.3	8.1	13.2	14.9	17.6	1.8	
C01	Jezik, koren Base of tongue	M Ž	1.6 0.4	-	-	-	1.2	-	-	-	0.5	-	0.6	0.5	1.8	1.0	2.2	3.1	3.1	3.1	5.4	0.7	
C02	Jezik, drugi delovi Tongue, other & unspecified parts	M Ž	1.4 0.3	-	-	-	-	-	-	0.5	-	1.2	1.6	2.7	3.2	3.3	5.1	3.9	2.0	2.0	0.2	0.9	
C03	Desni Gum	M Ž	0.2 0.2	-	-	-	-	-	-	-	0.6	-	-	-	-	-	0.7	3.1	-	-	0.1	0.1	
C04	Pod usta Floor of mouth	M Ž	1.2 0.4	-	-	-	-	-	-	-	-	-	1.6	2.3	3.7	4.9	3.7	1.6	2.7	1.2	0.9	0.2	
C05	Nepece Palate	M Ž	0.5 0.3	-	-	-	-	-	-	0.6	-	-	1.6	1.4	1.6	0.8	-	1.6	0.7	0.3	0.2	0.2	
C06	Usta, drugi delovi Mouth, other & unspecified parts	M Ž	0.8 0.9	-	-	-	-	-	0.0	0.5	-	0.5	1.7	2.2	0.5	0.9	1.0	0.7	1.2	1.2	2.7	0.6	
C07	Parotidna žlezda Parotid gland	M Ž	1.3 0.9	-	-	-	-	-	-	-	-	1.6	0.6	0.6	-	0.9	0.5	3.6	1.2	2.5	3.2	0.5	
C08	Pljučna žlezda Other & unspec. major salivary gl.	M Ž	0.4 0.4	-	-	-	-	0.6	0.6	-	-	-	-	1.2	1.1	0.5	2.1	0.8	-	0.8	-	0.3	
C09	Krajinik Tonsil	M Ž	1.3 0.5	-	-	-	-	-	-	-	-	-	0.6	0.6	2.7	-	0.3	1.6	0.7	7.1	4.1	0.7	
C10	Orofarings Oropharynx	M Ž	0.7 0.2	-	-	-	-	-	-	-	-	-	-	-	2.3	2.1	3.3	1.5	1.6	1.4	0.4	0.3	
C11	Nasofarings Nasopharynx	M Ž	0.6 0.5	-	0.7	-	-	-	-	-	0.6	-	1.1	0.5	1.6	4.9	1.5	-	-	0.7	0.5	0.1	
C12	Piriformni sinus Pyriform sinus	M Ž	0.1 0.1	-	-	-	-	-	-	-	-	-	-	0.5	-	-	-	0.7	-	-	0.6	-	0.1
C13	Hipofarings Hypopharynx	M Ž	2.7 0.6	-	-	-	-	-	-	-	0.5	-	0.6	5.9	6.0	8.5	4.9	8.8	5.5	3.4	1.7	1.7	
C14	Usne, usta, ždrelo, drugi delovi Other and ill def.sites in the lip,oral cavity&ph	M Ž	0.7 0.1	-	-	-	-	-	-	-	-	-	0.6	-	0.5	1.8	2.1	1.6	2.9	-	2.0	0.4	
C15	Jednjak Oesophagus	M Ž	4.7 1.6	-	-	-	-	-	-	-	1.1	-	0.6	5.3	9.6	12.8	12.2	13.9	10.2	12.2	2.8	2.8	
C16	Želudac Stomach	M Ž	20.6 12.5	-	-	-	-	-	0.5	0.5	0.5	5.3	5.2	10.7	23.3	27.8	66.8	68.2	74.5	87.5	11.6	6.2	
C17	Tanko crevo Small intestine	M Ž	0.8 0.7	-	-	-	-	-	-	-	0.6	-	0.5	0.9	1.1	1.6	2.9	3.9	3.4	0.5	0.4	0.5	
C18	Debelo crevo Colon	M Ž	27.9 18.4	-	-	-	-	2.2	1.6	3.3	5.8	8.1	10.7	28.8	56.1	62.7	82.2	130.9	104.5	15.3	9.0		
C19	Rektosigmoidni prelaz Rectosigmoid junction	M Ž	4.1 2.6	-	-	-	-	-	-	1.1	0.6	-	1.5	1.3	4.5	6.5	9.3	9.3	7.2	1.3	1.3	13.5	
C20	Rektum Rectum	M Ž	24.2 15.2	-	-	-	-	-	1.1	1.1	0.5	4.0	7.3	7.7	18.2	28.8	25.2	34.6	52.6	48.4	7.5	7.5	
C21	Anus i analni kanal Anus & anal canal	M Ž	0.6 0.4	-	-	-	-	-	-	-	0.6	0.5	-	1.0	0.7	-	2.5	0.9	0.2	0.2	0.3	0.2	
C22	Jetra, žučni kanali Liver & intrahepatic bile ducts	M Ž	8.0 4.6	0.7	-	-	0.6	0.5	1.1	-	0.6	2.9	2.1	6.9	11.8	23.6	27.9	25.9	39.3	4.5	2.0	2.0	
C23	Žučna kesica Gallbladder	M Ž	1.7 3.5	-	-	-	-	0.6	-	-	-	-	-	1.8	2.1	4.1	8.1	7.8	6.8	0.9	1.6	1.6	
C24	Žučni kanali, drugi delovi Biliary tract, other & unspec. parts	M Ž	1.1 1.2	-	-	-	-	-	-	-	0.5	-	-	1.4	3.2	7.3	2.2	3.1	2.7	0.7	0.7	0.7	
C25	Pankreas Pancreas	M Ž	10.1 7.5	-	-	-	-	-	0.6	0.5	0.5	0.6	1.7	5.9	15.1	22.4	26.9	27.9	40.0	33.2	5.7	3.6	
C26	Org. za var., ned. odrež. lok. Other & ill-defined digestive organs	M Ž	1.3 0.8	-	-	-	-	-	-	-	-	-	-	0.5	0.9	5.3	1.6	4.4	3.9	4.7	0.7	0.7	
C30	Nosna šupljina i srednje uvo Nasal cavity & middle ear	M Ž	0.5 0.3	-	-	-	-	-	-	-	0.6	-	-	-	0.5	-	0.8	2.2	3.1	2.0	0.3	0.1	
C31	Nosni sinusi Accessory sinuses	M Ž	1.0 0.3	-	-	-	-	-	-	0.5	-	0.6	1.1	0.5	3.2	3.3	1.5	3.1	3.4	0.6	0.2	0.2	
C32	Larings Larynx	M Ž	22.0 2.4	-	-	-	-	-	1.1	-	2.3	12.7	24.0	38.4	56.1	70.9	66.8	65.8	36.6	13.5	1.4	1.4	
C33	Traheja Trachea	M Ž	0.8 0.3	-	-	-	0.6	-	-	-	0.6	0.6	-	1.8	2.1	-	2.9	3.1	0.7	0.5	0.5	0.5	
C34	Bronh i pluća Bronchus & lung	M Ž	103.9 28.0	-	-	-	-	1.1	2.1	2.7	7.6	24.3	89.0	173.9	256.9	315.2	327.3	344.9	249.6	61.0	15.1	15.1	
C37	Timus Thymus	M Ž	0.0 0.2	-	-	-	-	-	-	0.5	-	-	-	-	0.9	1.0	0.7	-	-	-	0.0	0.2	
C38	Srce, mediastinum, pleura Heart, mediastinum & pleura	M Ž	1.2 0.6	-	0.7	-	-	-	-	-	-	-	0.5	2.3	4.8	4.1	2.9	1.6	2.7	0.7	0.7	0.7	
C39	Toraks, druge lokalizacije Other & ill-def. in the res.sys.	M Ž	0.1 0.2	-	-	-	-	-	-	0.0	-	-	-	0.5	-	-	-	0.8	0.7	0.1	0.1	0.1	
C40	Kosti i zglobovi, hrskavice udova Bone & articular cartilage of limbs	M Ž	1.3 1.1	-	-	2.0	3.6	0.5	0.5	0.5	-	0.6	1.6	2.7	1.6	1.6	1.5	1.6	2.0	1.1	1.1	1.1	
C41	Kosti i zglobovi, hrskavice, dr. lok. Bone & articular cartilage of other	M Ž	0.9 1.4	0.0	0.7	1.3	1.2	0.5	0.5	0.5	-	0.6	-	0.9	2.1	0.8	2.9	1.6	1.4	0.8	0.8	0.8	
C43	Koža, maligni melanom Malignant melanoma of skin	M Ž	5.5 4.7	-	-	-	-	0.5	2.1	3.3	0.6	6.4	5.3	7.8	6.9	12.2	16.9	13.3	18.3	3.4	3.4	3.4	
C44	Koža, drugi maligni tumori Skin, other malignomas	M Ž	65.8 58.8	-	-	-	-	1.1	5.3	4.9	12.3	22.5	35.7	49.4	83.9	140.9	222.3	255.5	350.0	35.3	27.7	27.7	
C45	Mezotelijom Mesothelioma	M Ž	0.3 0.1	-	-	-	-	-	-	-	-	-	-	-	1.1	1.6	0.7	-	1.4	0.2	0.2	0.2	
C46	Kaposijev sarkom Kaposi's sarcoma	M Ž	0.2 0.0	-	-	-	-	-	-	0.5	-	-	-	-	-	0.5	-	-	-	1.4	0.1	0.1	
C47	Periferni nervi i aut. ner. sis. Peripheral nerves & auton. nerv. sys.	M Ž	0.3 0.3	-	-	-	-	-	-	0.5	0.5	-	-	-	1.4	0.5	0.8	0.7	-	0.7	0.2	0.2	
C48	Peritoneum i retroperitoneum Retroperitoneum & peritoneum	M Ž	0.7 0.9	-	-	-	0.6	-	-	0.5	0.6	-	0.5	0.5	0.5	0.8	1.5	4.7	2.0	0.4	0.4	0.4	
C49	Vežvna i meka tkiva, drugi Other connective and soft tissue	M Ž	3.4 2.4	0.7	0.7	0.7	3.0	0.5	1.1	0.5	2.3	0.6	3.2	3.7	3.2	11.4	10.3	11.0	6.8	2.4	2.4	2.4	
C50	Dojka Breast	M Ž	2.1 100.2	-	-	-	-	-	1.1	2.7	1.1	1.1	2.2	3.1	2.7	2.5	3.6	8.0	4.3	4.1	1.7	1.2	

Tabela 19.1 Incidencija od raka na 100.000 stanovnika prema primarnoj lokalizaciji (MKB-10), uzrastu i polu, centralna Srbija, 2006. godina (nastavak)

Table 19.1 Cancer incidence rates per 100.000 population by primary site (ICD-10), age and sex, Central Serbia, 2006 (continued)

MKB-10 (ICD-10)	Primarna lokalizacija Primary site	POL	Sirova inc. CR	U Z R A S T (A g e)													Stand. inc. ASR					
				0-4	5-9	10-14	15-19	20-24	25-29	30-34	35-39	40-44	45-49	50-54	55-59	60-64		65-69	70-74	75+		
Šifra (Code)		SEX	487.8	17.4	18.5	14.3	29.1	32.9	47.5	63.8	95.7	153.7	328.3	566.6	863.2	1235.4	1520.5	1799.7	1805.2	282.8		
Ukupno (All)		Ž (Female)	423.3	12.5	11.6	11.0	26.2	29.0	56.1	108.7	197.2	313.0	432.9	600.6	734.0	846.8	993.2	1067.2	1007.2	240.5		
C51	Vulva	Ž	3.0	-	-	-	-	-	-	-	0.5	-	-	2.2	2.6	4.4	6.0	5.0	7.4	6.8	9.5	1.5
C52	Vagina	Ž	0.9	-	-	-	-	-	-	-	-	-	-	1.0	0.9	1.5	2.2	3.1	2.5	2.3	0.4	-
C53	Grlje matrice	Ž	37.9	-	-	-	-	0.6	7.6	21.2	54.9	71.1	73.4	72.9	72.6	52.5	46.3	51.3	41.6	25.8	-	-
C54	Materica, telo	Ž	23.3	-	-	-	-	-	-	3.3	3.4	7.8	25.7	41.3	55.2	72.7	65.5	44.5	39.4	13.2	-	-
C55	Materica, neoznačeni deo	Ž	1.0	-	-	-	-	-	-	-	1.1	-	1.0	1.8	2.0	3.6	0.6	3.1	1.8	0.6	-	-
C56	Jajnik	Ž	15.4	-	-	0.7	-	3.3	3.2	4.3	8.6	15.7	20.0	24.9	28.3	29.5	38.3	38.3	21.3	9.4	-	-
C57	Ženski gen.org., dr. neoz. lok.	Ž	0.9	-	-	-	-	-	-	0.5	-	-	-	1.5	2.7	2.5	1.4	-	2.5	1.4	0.5	-
C58	Placenta	Ž	0.1	-	-	-	-	-	-	-	-	-	-	0.4	0.5	-	-	-	-	-	-	0.0
C60	Penis	M	1.1	-	-	-	-	-	-	-	-	-	-	1.6	1.4	1.6	4.1	3.7	2.4	5.4	0.7	-
C61	Prostata	M	50.5	-	-	0.6	-	-	-	-	-	0.6	3.7	15.1	28.8	100.2	192.3	271.2	341.2	24.2	-	-
C62	Testis	M	6.6	0.7	0.7	-	5.4	11.9	13.2	20.2	10.5	9.8	9.1	4.6	3.7	2.4	-	0.8	3.4	6.2	-	-
C63	Muški gen. org., dr. neoz. org.	M	0.2	-	-	-	-	0.5	-	-	-	-	-	-	0.5	-	0.7	-	0.7	0.1	-	-
C64	Bubreg	M	10.9	1.4	0.7	-	0.6	1.1	0.5	0.5	2.9	4.0	11.7	16.5	26.7	23.6	33.8	26.7	33.9	6.6	-	-
C65	Bubrežna karlica	Ž	6.1	0.7	-	-	0.6	0.6	0.5	1.6	1.1	2.8	3.1	6.7	10.4	14.4	16.1	20.4	15.8	3.3	-	-
C66	Ureter	M	1.1	-	-	-	-	-	-	-	-	-	-	0.9	1.1	-	3.7	10.2	4.7	0.5	-	-
C67	Mokraćna bešika	Ž	32.2	-	-	-	-	1.6	2.2	1.2	7.5	13.3	33.0	43.3	74.1	107.1	138.0	159.4	17.1	-	-	-
C68	Urinarni organi, dr. neoz. org.	Ž	8.7	-	-	-	-	-	-	1.1	0.6	5.0	5.6	7.6	15.4	20.9	18.5	26.6	31.2	4.3	-	-
C69	Okolo, pripojni oka	M	0.2	-	-	-	-	-	-	0.5	-	-	-	-	0.5	-	0.7	-	1.2	0.1	-	-
C70	Moždanie	Ž	1.7	1.4	0.7	0.7	-	0.5	0.5	1.8	0.6	1.1	2.7	0.5	4.1	6.6	4.7	4.7	1.3	-	-	-
C71	Mozak	Ž	1.4	1.5	-	-	0.6	-	-	-	0.6	1.1	0.5	3.1	2.0	2.2	1.2	4.3	3.6	0.9	-	-
C72	Centralni ner. sis., dr. delovi	M	1.1	0.7	-	-	0.6	0.5	-	0.5	-	-	-	1.2	1.6	0.9	2.7	3.3	2.9	1.6	2.0	0.8
C73	Štitasta žlezda	Ž	1.3	0.7	-	-	-	0.6	-	-	-	2.3	0.6	1.0	2.7	2.5	2.9	3.1	3.1	0.9	0.9	-
C74	Nadbubrežna žlezda	M	13.0	4.2	3.0	3.3	3.0	4.3	4.2	6.5	9.9	7.5	12.8	20.1	27.2	32.6	30.8	32.9	14.9	9.5	-	-
C75	Adrenalna žlezda	Ž	9.2	1.5	6.2	2.7	4.4	3.3	5.4	7.6	6.9	5.0	8.2	9.8	18.4	17.3	16.7	19.8	11.3	6.8	-	-
C76	Endokrine žlezde, druge	M	0.3	-	-	-	-	-	0.5	-	0.6	0.6	-	0.9	0.5	-	1.5	-	-	0.2	-	-
C77	Ostale lokalizacije	Ž	0.5	-	-	-	0.6	-	-	0.5	0.6	2.2	-	0.9	0.5	0.7	0.6	1.2	-	0.4	-	-
C78	Sekundarne lok., bez ozn. lok.	M	1.4	-	-	-	-	-	-	0.5	-	1.2	1.6	1.6	1.4	1.6	5.7	5.9	3.1	3.4	0.9	-
C79	Unspec.mal.neof.lymph nod.&without of spec	Ž	2.3	1.5	-	-	0.6	-	-	-	1.1	0.6	0.5	1.3	2.5	1.4	8.0	5.6	10.9	1.2	-	-
C80	Hodgkinova bolest	M	11.3	1.4	0.7	2.0	0.6	2.2	2.1	1.1	8.8	4.0	9.1	12.4	19.8	24.4	41.1	37.6	29.8	7.2	-	-
C81	Hodgkin's disease	Ž	8.6	-	-	-	3.1	2.2	4.9	3.3	2.3	6.7	5.6	10.2	11.9	16.5	18.5	24.1	21.7	5.0	-	-
C82	Ne-Hodgkinov lim., folikularni	M	2.4	-	1.5	0.7	1.2	2.2	3.7	1.6	1.2	2.3	3.2	1.8	6.9	4.9	2.9	3.9	2.0	-	-	-
C83	Folikular non-Hodgkin's lymphoma	Ž	2.2	0.7	-	0.7	2.5	2.2	3.8	4.3	2.9	3.4	1.5	-	1.5	4.3	3.1	2.5	1.8	2.0	-	-
C84	Ne-Hodgkinov lim., difuzni	M	1.9	-	-	-	0.6	-	-	1.1	0.6	1.7	2.7	1.8	2.1	3.3	7.3	7.8	4.1	1.2	-	-
C85	Difuzno non-Hodgkin's lymphoma	Ž	2.1	-	0.8	-	-	-	-	0.5	-	2.3	1.7	2.6	0.9	3.0	6.5	6.2	4.9	3.6	1.3	-
C86	Periferni i kožni lim. T-ćelija	M	1.7	-	0.7	-	-	1.1	1.6	0.5	1.2	1.7	-	0.9	3.7	4.1	2.9	4.7	5.4	1.1	-	-
C87	Peripheral & cutaneous T-cell lymphomas	Ž	1.6	0.7	0.8	-	-	0.6	-	1.7	1.1	1.0	2.7	4.0	2.2	1.9	3.7	3.6	1.0	-	-	-
C88	Ne-Hodgkinovi limfomi, drugi	M	0.2	-	-	-	1.2	-	-	-	-	-	-	-	0.5	0.8	-	1.6	-	0.2	-	-
C89	Other & unspec. types of non-Hodgkin's lymph	Ž	0.2	-	-	-	-	-	-	-	-	-	0.6	0.5	0.4	-	1.2	-	0.5	0.1	-	-
C90	Zloćudne imunoprolifer. bolesti	M	3.8	0.7	1.5	0.7	2.4	1.1	1.1	0.5	1.8	4.0	3.2	4.1	4.8	6.5	10.3	9.4	12.2	2.6	-	-
C91	Malignant immunoproliferative diseases	Ž	2.3	-	-	-	1.2	1.7	0.5	-	0.6	0.6	2.1	3.1	3.0	7.9	6.8	5.6	3.6	1.5	-	-
C92	Mult. mijelom i zloc. tum. plaz. cel.	M	0.1	-	-	-	-	-	-	0.5	-	-	-	-	-	-	-	0.7	-	0.1	-	-
C93	Multiple myeloma and malignant plasma cell n	Ž	0.0	-	-	-	-	-	-	-	-	-	-	-	-	-	-	-	-	0.0	-	-
C94	Limfoblastična leukemija	M	1.9	-	-	-	-	-	-	-	-	-	1.2	1.1	4.6	1.1	7.3	5.1	8.6	4.7	1.1	-
C95	Lymphoblastic, lymphoid leukaemia	Ž	2.1	-	-	-	-	-	-	-	-	0.6	0.6	1.5	3.1	3.0	4.3	5.6	8.7	5.4	1.1	-
C96	Mijeloidna leukemija	M	4.2	4.9	3.7	2.0	0.6	-	-	1.6	1.2	1.2	2.7	2.7	5.9	9.8	10.3	15.7	13.6	3.2	-	-
C97	Mijeloidna leukemija	Ž	2.7	1.5	1.5	2.7	-	0.6	0.5	-	0.6	0.6	1.5	0.9	3.0	5.8	8.0	7.4	9.0	1.8	-	-
C98	Mijeloidna leukemija	M	2.8	-	1.5	1.3	2.4	0.5	-	2.7	1.2	1.2	2.1	3.2	3.2	4.9	5.9	11.0	7.5	2.0	-	-
C99	Monocitna leukemija	Ž	2.2	-	0.8	0.7	0.6	-	2.7	2.7	1.7	1.1	2.1	1.3	4.5	2.2	6.2	3.1	4.1	1.5	-	-
C100	Monocytic leukaemia	M	0.2	-	-	-	-	-	-	-	-	-	1.1	-	-	-	-	0.7	-	0.1	-	-
C101	Leukemije, druge	Ž	0.1	-	-	-	-	-	0.5	0.5	-	-	-	0.4	-	-	-	0.6	-	0.1	-	-
C102	Other leukaemias of specified cells	M	0.1	-	-	-	-	-	-	-	-	-	-	0.5	-	-	-	-	-	0.1	-	-
C103	Leukemije, neoznačene	Ž	1.2	0.7	0.7	-	-	-	-	-	-	-	0.6	1.6	0.9	1.1	3.3	2.2	4.7	6.1	0.8	-
C104	Leukaemia, unspecified cell type	M	0.8	0.7	-	-	0.6	-	-	-	-	-	1.1	-	0.5	-	1.4	3.1	2.5	1.8	0.5	-
C105	Dr. zloc. tum. hematop. sist.	Ž	0.0	-	-	-	-	-	-	-	-	-	-	-	0.5	-	-	-	-	0.0	-	-
C106	Other & unsp. mal. neo. of lym., haem. & tissue	M	0.0	-	-	-	-	-	-	-	-	-	-	-	-	0.5	-	-	-	0.0	-	-
C107	Sve lokalizacije, bez kože	M	422.0	17.4	18.5	14.3	29.1	31.8	42.2	58.9	83.4	131.2	292.6	517.2	779.3	1094.5	1298.1	1544.2	1455.1	247.5	-	-
C108	All sites but skin	Ž	364.5	12.5	11.6	11.0	25.0	27.8	49.6	98.4	186.9	296.8	401.0	549.1	660.9	743.2	835.7	877.4	771.9	212.8	-	-

Tabela 20. Broj umrlih slučajeva od raka, prema primarnoj lokalizaciji (MKB010), uzrastu i polu, centralna Srbija, 2006. godina

Table 20. Number of cancer deaths by primary site (ICD010), age and sex, Central Serbia, 2006

MKB-10 (ICD-10)	Primarna lokalizacija Primary site	POL SEX	Ukupno (All)	0-4	5-9	10-14	15-19	20-24	25-29	30-34	35-39	40-44	45-49	50-54	55-59	60-64	65-69	70-74	75+	%	
Šifra (Code)		M (Male)	7968	4	7	4	10	18	23	23	48	114	299	661	999	863	1225	1547	2123	100.0%	
Ukupno (All)		Ž (Female)	6146	6	3	3	8	11	16	29	68	148	239	535	621	566	871	1084	1938		
C00	Usna Lip	M Ž	23 4	-	-	-	-	-	-	-	-	-	-	-	1	-	-	3	5	11	0.3%
C01	Jezik, koren Base of tongue	M Ž	17 4	-	-	-	-	-	-	-	-	-	3	1	6	2	1	1	3	0.2%	
C02	Jezik, drugi delovi Tongue, other & unspecified parts	M Ž	24 8	-	-	-	-	-	-	-	1	4	1	3	2	6	4	3	0.3%		
C03	Desni Gum	M Ž	1 0	-	-	-	-	-	-	-	-	-	-	-	1	-	-	-	-	0.0%	
C04	Pod usta Floor of mouth	M Ž	24 3	-	-	-	-	-	-	-	-	1	4	4	4	2	4	2	3	0.3%	
C05	Nepece Palate	M Ž	3 3	-	-	-	-	-	-	-	-	-	1	1	1	1	2	-	-	0.0%	
C06	Usta, drugi delovi Mouth, other & unspecified parts	M Ž	8 8	-	-	-	-	-	-	-	-	1	-	1	3	1	2	-	4	0.1%	
C07	Parotidna žlezda Parotid gland	M Ž	16 11	-	-	-	-	-	-	-	-	-	-	-	2	-	2	-	7	0.2%	
C08	Pljučna žlezda Other & unspec. major salivary gl.	M Ž	2 2	-	-	-	-	-	-	-	1	-	-	-	-	-	-	1	1	0.0%	
C09	Krajinik Tonsil	M Ž	13 4	-	-	-	-	1	-	-	-	1	1	4	-	1	4	1	0.2%		
C10	Orofarings Oropharynx	M Ž	13 5	-	-	-	-	-	-	2	-	1	2	1	-	2	2	3	0.2%		
C11	Nasofarings Nasopharynx	M Ž	12 5	-	-	-	-	-	-	-	1	1	3	4	1	2	-	2	0.2%		
C12	Piriformni sinus Pyriform sinus	M Ž	3 0	-	-	-	-	-	-	-	-	-	-	2	-	-	-	1	0.0%		
C13	Hipofarings Hypopharynx	M Ž	53 12	-	1	-	-	1	-	-	-	2	3	11	11	4	12	8	1	0.7%	
C14	Usne, usta, ždrelo, drugi delovi Other and ill def.sites in the lip,oral cavity&ph:	M Ž	28 7	-	-	-	-	-	-	-	1	-	-	2	7	6	4	6	3	0.4%	
C15	Jednjak Oesophagus	M Ž	123 40	-	-	-	-	1	-	2	2	4	15	28	14	13	29	17	1.5%		
C16	Želudac Stomach	M Ž	487 283	-	-	-	-	-	1	3	12	6	17	39	44	63	62	110	135	6.1%	
C17	Tanko crevo Small intestine	M Ž	12 15	-	-	-	-	-	-	-	-	-	-	1	1	5	-	5	0.2%		
C18	Debelo crevo Colon	M Ž	466 373	-	-	-	-	2	1	1	8	9	12	23	52	39	69	99	151	5.8%	
C19	Rektosigmoidni prelaz Rectosigmoid junction	M Ž	41 47	-	-	-	-	-	-	-	-	1	1	6	6	10	8	9	0.5%		
C20	Rektum Rectum	M Ž	418 292	-	-	-	-	-	-	1	3	12	22	31	43	67	83	156	5.2%		
C21	Anus i analni kanal Anus & anal canal	M Ž	5 2	-	-	-	-	-	-	-	-	-	-	2	-	1	1	1	0.1%		
C22	Jetra, žučni kanali Liver & intrahepatic bile ducts	M Ž	309 208	-	-	-	1	-	2	3	7	1	14	39	27	62	51	102	3.9%		
C23	Žučna kesha Gallbladder	M Ž	42 109	-	-	-	-	-	-	1	1	3	7	9	6	10	11	12	0.5%		
C24	Žučni kanali, drugi delovi Biliary tract, other & unspec. parts	M Ž	46 28	-	-	-	1	-	-	2	1	3	3	2	7	11	17	0.6%			
C25	Pankreas Pancreas	M Ž	377 296	-	-	1	-	-	2	8	13	25	57	42	62	84	83	4.7%			
C26	Org. za var., ned. odrež. lok. Other & ill-defined digestive organs	M Ž	27 21	-	-	-	-	-	-	1	1	1	1	4	1	3	3	10	0.3%		
C30	Nosna šupljina i srednje uvo Nasal cavity & middle ear	M Ž	9 1	-	-	-	-	-	-	-	-	-	1	-	2	2	1	3	0.1%		
C31	Nosni sinusi Accessory sinuses	M Ž	11 3	-	-	-	-	-	-	-	-	1	-	3	1	3	-	3	0.1%		
C32	Larings Larynx	M Ž	274 30	-	-	-	-	-	-	-	6	14	38	40	37	44	42	53	3.4%		
C33	Traheja Trachea	M Ž	9 2	-	-	-	-	-	-	-	1	-	2	3	-	1	-	2	0.1%		
C34	Bronh i pluća Bronchus & lung	M Ž	2471 755	-	-	-	-	-	2	8	23	36	92	295	401	303	393	466	451	31.0%	
C37	Timus Thymus	M Ž	3 3	-	-	-	-	-	-	-	-	1	1	-	1	1	-	-	-	0.0%	
C38	Srce, mediastinum, pleura Heart, mediastinum & pleura	M Ž	37 22	-	-	1	-	-	2	1	-	1	1	2	7	7	4	7	0.5%		
C39	Toraks, druge lokalizacije Other & ill-def. in the res.sys.	M Ž	3 0	-	-	-	-	-	-	-	-	1	-	1	-	-	1	-	-	0.0%	
C40	Kosti i zglobovi, hrskavice udova Bone & articular cartilage of limbs	M Ž	12 14	1	-	-	1	1	1	2	-	-	1	2	-	-	3	3	0.2%		
C41	Kosti i zglobovi, hrskav., dr. lok. Bone & articular cartilage of other	M Ž	23 20	-	-	1	2	1	-	1	-	1	1	3	1	4	1	6	0.3%		
C43	Koža, maligni melanom Malignant melanoma of skin	M Ž	72 68	-	-	-	-	1	-	2	-	3	7	12	10	9	8	8	12	0.9%	
C44	Koža, drugi mal. tumori Skin, other malignomas	M Ž	57 45	-	-	-	-	1	-	5	2	1	3	11	11	9	5	19	1.1%		
C45	Mezoteliom Mesothelioma	M Ž	9 4	-	-	-	-	-	-	-	-	-	1	3	-	3	1	1	0.1%		
C46	Kaposijev sarkom Kaposi's sarcoma	M Ž	1 1	-	-	-	-	-	-	-	1	-	-	-	-	-	-	-	-	0.0%	
C47	Periferni nervi i aut. ner. sis. Peripheral nerves & auton. nerv. sys.	M Ž	2 1	-	-	-	1	-	-	-	-	-	-	-	-	1	-	-	-	0.0%	
C48	Peritoneum i retroperitoneum Retroperitoneum & peritoneum	M Ž	31 29	-	-	-	-	-	-	1	-	-	-	2	4	3	8	7	6	0.4%	
C49	Vezivna i meka tkiva, drugi Other connective and soft tissue	M Ž	25 24	-	1	-	2	1	-	1	-	1	3	3	1	6	4	3	0.3%		
C50	Dojka Breast	M Ž	30 1079	-	-	-	-	-	1	-	9	43	50	124	124	105	143	155	325	17.6%	

Tabela 20.1 Broj umrlih slučajeva od raka, prema primarnoj lokalizaciji (MKB010), uzrastu i polu, centralna Srbija, 2006. godina (nastavak)

Table 20.1 Number of cancer deaths by primary site (ICD010), age and sex, Central Serbia, 2006 (continued)

MKB-10 (ICD-10) Šifra (Code) Ukupno (All)	Primarna lokalizacija Primary site	POL SEX M (Male) Ž (Female)	Ukupno (All) 7968 6146	U Z R A S T (A g e)																% 100.0%		
				0-4	5-9	10-14	15-19	20-24	25-29	30-34	35-39	40-44	45-49	50-54	55-59	60-64	65-69	70-74	75+			
C51	Vulva Vulva	Ž	41	-	-	-	-	-	-	-	-	-	-	-	1	2	2	4	8	6	18	0.7%
C52	Vagina Vagina	Ž	14	-	-	-	-	-	-	-	-	1	-	-	-	-	1	-	2	5	5	0.2%
C53	Grlić materice Cervix uteri	Ž	359	-	-	-	-	1	-	5	12	19	31	47	55	36	39	41	73			5.8%
C54	Materica, telo Corpus uteri	Ž	160	-	-	-	-	-	-	-	-	-	1	2	15	20	18	26	22	56		2.6%
C55	Materica, neoznačeni deo Uterus, unspecified part	Ž	91	-	-	-	-	-	-	-	1	1	1	11	6	10	11	22	28			1.5%
C56	Jajnik Ovary	Ž	296	-	-	-	-	-	1	3	6	3	19	33	39	42	41	56	53			4.8%
C57	Ženski gen.org., dr. neoz. lok. Other & unspec.parts of fem. gen.org.	Ž	17	-	-	-	-	-	-	-	-	-	1	2	-	1	5	4	4			0.3%
C58	Placenta Placenta	Ž	0	-	-	-	-	-	-	-	-	-	-	-	-	-	-	-	-	-	-	0.0%
C60	Penis Penis	M	17	-	-	-	-	-	-	-	1	-	1	2	3	1	2	4	3			0.2%
C61	Prostata Prostate	M	656	-	-	-	-	1	-	-	-	1	2	3	28	34	65	149	373			8.2%
C62	Testis Testis	M	14	-	-	-	-	5	1	3	-	1	1	-	-	-	-	-	1	2		0.2%
C63	Muški gen. org., dr. neoz. org. Other & unspec. male genital organs	M	0	-	-	-	-	-	-	-	-	-	-	-	-	-	-	-	-	-	-	0.0%
C64	Bubreg Kidney, except renal pelvis	M	142	-	1	-	-	-	-	2	1	1	12	12	16	19	24	22	32			1.8%
C65	Bubrežna karlica Renal pelvis	M	13	-	-	-	-	-	-	-	-	-	-	-	-	4	1	5	3			0.2%
C66	Ureter Ureter	M	8	-	-	-	-	-	-	-	-	-	-	-	-	-	2	4	2			0.1%
C67	Mokraćna bešika Bladder	M	359	-	-	-	-	-	-	-	1	1	3	13	23	37	63	67	151			4.5%
C68	Urinarni organi, dr. neoz. org. Other & unspecified urinary organs	M	0	-	-	-	-	-	-	-	-	-	-	-	-	-	-	-	-	-	-	0.0%
C69	Oko, pripoji oka Eye and adnexa	M	8	-	-	-	-	-	-	-	-	-	-	1	-	1	4	-	2			0.1%
C70	Moždance Meninges	M	7	-	-	-	-	-	-	-	-	-	-	-	2	-	-	3	2			0.1%
C71	Mozak Brain	M	265	4	1	3	1	1	4	6	8	7	15	30	42	36	34	37	36			3.3%
C72	Centralni ner. sis., dr. delovi Spinal cord, cran. nerv. & oth. parts of CNS	M	8	-	-	1	-	-	1	-	-	-	-	1	1	-	1	2	1			0.1%
C73	Štitasta žlezda Thyroid gland	M	19	-	-	-	-	-	-	-	-	-	1	2	1	3	1	5	7			0.2%
C74	Nadbubrežna žlezda Adrenal gland	M	12	-	-	-	-	-	-	-	-	-	1	2	4	1	-	1	3			0.2%
C75	Endokrine žlezde, druge Other endocrine glands & related structures	M	4	-	-	-	-	-	-	-	-	-	1	-	-	-	1	-	2			0.1%
C76	Ostale lokalizacije Other & ill defined sites	M	73	-	-	-	-	-	1	-	-	-	-	7	6	11	10	15	23			0.9%
C77-C80	Sekundarne lok., bez ozn. lok. Unspec.mal.neo.of lymph nod.&without of spec.of site	M	274	-	1	-	1	-	1	-	-	1	11	25	32	27	46	65	64			3.4%
C81	Hodgkinova bolest Hodgkin's disease	M	36	-	-	-	-	1	2	-	1	-	1	6	6	3	6	7	5			0.5%
C82	Ne-Hodgkinov lim., folikularni Follicular non-Hodgkin's lymphoma	M	16	-	-	-	-	-	1	2	2	-	-	3	1	3	2	1	3			0.2%
C83	Ne-Hodgkinov lim., difuzni Diffuse non-Hodgkin's lymphoma	M	22	-	-	-	-	-	2	-	-	1	-	1	5	1	2	5	5			0.3%
C84	Periferni i kožni lim. T-ćelija Peripheral & cutaneous T-cell lymphomas	M	2	-	-	-	-	-	-	-	-	-	-	-	-	-	-	1	-			0.0%
C85	Ne-Hodgkinovi limfomi, drugi Other & unspec. types of non-Hodgkin's lymph	M	73	-	1	-	1	2	1	-	-	3	4	3	11	6	13	16	12			0.9%
C88	Zloćudne imunoprolifer. bolesti Malignant immunoproliferative diseases	M	3	-	-	-	-	-	-	-	-	-	-	-	1	1	-	-	1			0.0%
C90	Multi. mijelom i zloć. tum. plaz. ćel. Multiple myeloma and malignant plasma cell n	M	60	-	-	-	-	-	-	-	-	-	2	5	5	8	13	10	10			0.8%
C91	Limfoidna leukemija Lymphoblastic, lymphoid leukaemia	M	87	-	1	-	-	-	1	-	2	-	2	8	4	6	17	14	32			1.1%
C92	Mijeloidna leukemija Myeloid leukaemia	M	93	1	-	-	2	-	1	3	1	3	4	5	7	10	8	9	22			1.5%
C93	Monocitna leukemija Monocytic leukaemia	M	8	-	-	-	1	-	1	-	-	-	1	-	-	-	1	-	4			0.1%
C94	Leukemije, druge Other leukaemias of specified cells	M	6	-	-	-	-	-	-	-	-	-	-	1	-	1	2	1	2			0.1%
C95	Leukemije, neoznačene Leukaemia, unspecified cell type	M	21	-	-	-	-	-	-	-	1	-	-	1	-	2	5	5	7			0.3%
C96	Dr. zloć. tum. hematop. sist. Other&unsp.mal.neo.of lym.,haem.& tissue	M	0	-	-	-	-	-	-	-	-	-	-	-	-	-	-	-	-	-	-	0.0%
C00-C96 (C44)	Sve lokalizacije, bez kože All sites but skin	M	7911	4	7	4	10	18	22	23	48	113	298	658	996	856	1220	1537	2097			99.3%
		Ž	6101	6	3	3	8	11	16	29	68	148	239	534	621	565	871	1078	1901			99.3%

Tabela 21. Mortalitet od raka na 100.000 stanovnika prema primarnoj lokalizaciji (MKB010), uzrastu i polu, centralna Srbija, 2006. godina

Table 21. Cancer mortality rates per 100.000 population by primary site (ICD010), age and sex, Central Serbia, 2006

MKB-10 (ICD-10) Šifra (Code)	Primarna lokalizacija Primary site	POL SEX	Sirovi mort. CR	U Z R A S T (A g e)																	Stand. mort. ASR
				0-4	5-9	10-14	15-19	20-24	25-29	30-34	35-39	40-44	45-49	50-54	55-59	60-64	65-69	70-74	75+		
Ukupno (All)		Ž (Female)	221.3	4.4	2.3	2.1	5.0	6.1	8.6	15.8	38.9	82.9	122.7	237.7	308.8	407.2	538.0	670.2	876.9	105.8	
C00	Usna Lip	M Ž	0.9 0.1	-	-	-	-	-	-	-	-	-	-	-	-	0.5	3.3	2.2	3.9	7.5	0.4
C01	Jezik, koren Base of tongue	M Ž	0.6 0.1	-	-	-	-	-	-	-	-	-	-	1.6	0.5	3.2	1.6	0.7	0.8	2.0	0.4
C02	Jezik, drugi delovi Tongue, other & unspecified parts	M Ž	0.9 0.3	-	-	-	-	-	-	-	0.6	2.1	0.5	1.6	1.6	4.4	3.1	2.0	0.6	0.2	
C03	Desni Gum	M Ž	0.0 0.0	-	-	-	-	-	-	-	-	-	-	-	-	0.8	-	-	-	0.0	
C04	Pod usta Floor of mouth	M Ž	0.9 0.1	-	-	-	-	-	-	-	-	0.6	2.1	1.8	2.1	1.6	2.9	1.6	2.0	0.6	
C05	Nepece Palate	M Ž	0.1 0.1	-	-	-	-	-	-	-	-	-	0.5	-	0.5	-	0.7	-	-	0.1	
C06	Usta, drugi delovi Mouth, other & unspecified parts	M Ž	0.3 0.3	-	-	-	-	-	-	-	-	-	0.5	1.3	-	0.7	-	-	1.4	0.2	
C07	Parotidna žlezda Parotid gland	M Ž	0.6 0.4	-	-	-	-	-	-	-	-	-	-	-	-	-	2.2	3.9	5.4	0.3	
C08	Pljučna žlezda Other & unspec. major salivary gl.	M Ž	0.1 0.1	-	-	-	-	-	-	-	-	0.6	-	-	-	-	-	0.6	0.6	-	0.0
C09	Krajnik Tonsil	M Ž	0.5 0.1	-	-	-	-	-	0.5	-	-	-	0.5	0.5	2.1	-	0.7	3.1	0.7	0.3	
C10	Orofaringis Oropharynx	M Ž	0.5 0.2	-	-	-	-	-	-	-	1.2	-	0.5	0.9	0.5	-	1.5	1.6	2.0	0.3	
C11	Nasofaringis Nasopharynx	M Ž	0.5 0.2	-	-	-	-	-	-	-	-	-	0.5	0.5	1.6	3.3	0.7	1.6	-	0.3	
C12	Piriformni sinus Pyriform sinus	M Ž	0.1 0.0	-	-	-	-	-	-	-	-	-	-	-	1.1	-	-	-	0.7	0.1	
C13	Hipofaringis Hypopharynx	M Ž	2.0 0.4	-	0.8	-	-	0.5	-	-	-	1.2	1.6	5.0	5.9	3.3	8.8	6.3	0.7	1.2	
C14	Usne, usta, ždrelo, drugi delovi Other and ill def.sites in the lip,oral cavity&ph:	M Ž	1.1 0.3	-	-	-	-	-	-	-	-	0.6	-	0.4	3.7	4.9	2.9	4.7	2.0	0.6	
C15	Jednjak Oesophagus	M Ž	4.7 1.4	-	-	-	-	-	0.5	-	-	1.2	2.1	6.9	15.0	11.4	9.5	22.7	11.5	2.6	
C16	Želudac Stomach	M Ž	18.5 10.2	-	-	-	-	-	-	-	0.5	3.5	6.4	9.1	17.9	23.5	51.3	45.5	86.2	91.6	
C17	Tanko crevo Small intestine	M Ž	0.5 0.5	-	-	-	-	-	-	-	-	-	-	-	0.5	0.8	3.7	-	3.4	0.2	
C18	Debelo crevo Colon	M Ž	17.7 13.4	-	-	-	-	1.1	0.5	0.5	4.7	5.2	6.4	10.5	27.8	31.8	50.6	77.6	102.4	9.2	
C19	Rektosigmoidni prelaz Rectosigmoid junction	M Ž	1.6 1.7	-	-	-	-	-	-	-	-	-	0.5	0.5	3.2	4.9	7.3	6.3	6.1	0.8	
C20	Rektum Rectum	M Ž	15.9 10.5	-	-	-	-	-	-	-	0.6	1.7	6.4	10.1	16.6	35.0	49.2	65.1	105.8	8.0	
C21	Anus i analni kanal Anus & anal canal	M Ž	0.2 0.1	-	-	-	-	-	-	-	-	-	-	-	1.1	-	0.7	0.8	0.7	0.1	
C22	Jetra, žučni kanali Liver & intrahepatic bile ducts	M Ž	11.7 7.5	-	-	-	0.5	-	-	1.1	1.8	4.0	0.5	6.4	20.8	22.0	45.5	40.0	69.2	6.1	
C23	Žučna kesica Gallbladder	M Ž	1.6 3.9	-	-	-	-	-	-	-	-	-	0.6	0.5	1.3	3.5	6.5	12.4	17.3	18.1	
C24	Žučni kanali, drugi delovi Biliary tract, other & unspec. parts	M Ž	1.7 1.0	-	-	0.6	-	-	-	-	-	-	1.2	0.5	1.4	1.6	1.6	5.1	8.6	11.5	
C25	Pankreas Pancreas	M Ž	14.3 10.7	-	-	0.6	-	-	-	-	1.2	4.6	6.9	11.4	30.4	34.2	45.5	65.8	56.3	7.8	
C26	Org. za var., ned. odrež. lok. Other & ill-defined digestive organs	M Ž	1.0 0.8	-	-	-	-	-	-	-	0.6	0.6	0.0	0.5	2.1	-	4.4	3.9	6.1	0.5	
C30	Nosna šupljina i srednje uvo Nasal cavity & middle ear	M Ž	0.3 0.0	-	-	-	-	-	-	-	-	-	-	0.5	-	1.6	1.5	0.8	2.0	0.2	
C31	Nosni sinusi Accessory sinuses	M Ž	0.4 0.1	-	-	-	-	-	-	-	-	-	0.5	-	1.6	0.8	2.2	-	2.0	0.2	
C32	Larings Larynx	M Ž	10.4 1.1	-	-	-	-	-	-	-	-	3.5	7.5	17.4	21.4	30.1	32.3	32.9	36.0	5.9	
C33	Traheja Trachea	M Ž	0.3 0.1	-	-	-	-	-	-	-	-	0.6	-	0.9	1.6	-	0.7	-	1.4	0.2	
C34	Bronh i pluća Bronchus & lung	M Ž	93.9 27.2	-	-	-	-	-	-	2.7	2.9	17.9	64.5	135.0	214.2	246.8	288.4	365.3	306.0	52.5	
C37	Timus Thymus	M Ž	0.1 0.1	-	-	-	-	-	-	-	-	-	0.6	0.5	-	0.5	-	-	-	0.1	
C38	Srce, mediastinum, pleura Heart, mediastinum & pleura	M Ž	1.4 0.8	-	-	0.7	-	-	-	1.1	0.6	-	0.6	0.5	0.9	3.7	5.7	5.1	3.1	4.7	
C39	Toraks, druge lokalizacije Other & ill-def. in the res.sys.	M Ž	0.1 0.0	-	-	-	-	-	-	-	-	-	-	0.5	-	0.5	-	-	0.8	-	
C40	Kosti i zglobovi, hrskavice udova Bone & articular cartilage of limbs	M Ž	0.5 0.5	0.7	-	-	0.6	-	0.5	-	-	-	-	-	0.4	-	-	0.6	0.6	2.3	
C41	Kosti i zglobovi, hrskav., dr. lok. Bone & articular cartilage of other	M Ž	0.9 0.7	-	-	1.2	-	0.5	-	-	0.6	-	-	0.5	0.4	1.5	0.7	2.5	0.6	2.7	
C43	Koža, maligni melanom Malignant melanoma of skin	M Ž	2.7 2.4	-	-	-	0.5	-	-	1.1	-	1.7	3.7	5.5	5.3	7.3	5.9	6.3	8.1	1.7	
C44	Koža, drugi mal. tumori Skin, other malignomas	M Ž	2.2 1.6	-	-	-	-	0.5	-	-	-	0.6	0.5	1.4	1.6	5.7	3.7	7.8	17.6	1.1	
C45	Mezoteliom Mesothelioma	M Ž	0.3 0.1	-	-	-	-	-	-	-	-	-	-	0.5	1.6	-	2.2	0.8	0.7	0.2	
C46	Kaposijev sarkom Kaposi's sarcoma	M Ž	0.0 0.0	-	-	-	-	-	-	0.6	-	-	-	-	-	-	-	-	-	0.0	
C47	Periferi nervi i aut. ner. sis. Peripheral nerves & auton. nerv. sys.	M Ž	0.1 0.0	-	-	-	0.5	-	-	-	-	-	-	0.5	-	-	-	-	-	0.1	
C48	Peritoneum i retroperitoneum Retroperitoneum & peritoneum	M Ž	1.2 1.0	-	-	-	-	-	-	0.6	-	-	-	0.9	2.1	2.4	5.9	5.5	4.1	0.6	
C49	Vezivna i meka tkiva, drugi Other connective and soft tissue	M Ž	1.0 0.9	-	0.7	-	-	1.1	0.5	-	-	0.6	-	0.9	1.0	0.7	0.6	3.1	4.5	0.4	
C50	Dojka Breast	M Ž	1.1 38.8	-	-	-	-	-	0.5	-	5.1	24.1	25.7	55.1	61.7	75.5	88.3	95.8	147.1	19.1	

Tabela 21.1 Mortalitet od raka na 100.000 stanovnika prema primarnoj lokalizaciji (MKB010), uzrastu i polu, centralna Srbija, 2006. godina (nastavak)

Table 21.1 Cancer mortality rates per 100.000 population by primary site (ICD010), age and sex, Central Serbia, 2006 (continued)

MKB-10 (ICD-10) Šifra (Code)	Primarna lokalizacija Primary site	POL SEX	Sirovi mort. CR	U Z R A S T (A g e)														Stand. mort. ASR			
				0-4	5-9	10-14	15-19	20-24	25-29	30-34	35-39	40-44	45-49	50-54	55-59	60-64	65-69		70-74	75+	
Ukupno (All)	M (Male)	Ž (Female)	221.3	2.8	5.2	2.6	5.9	9.7	12.1	12.5	28.0	65.9	159.4	302.5	533.6	702.8	898.9	1212.6	1440.2	163.9	
C51	Vulva	Ž	1.5	-	-	-	-	-	-	-	-	-	-	0.5	0.9	1.0	2.9	4.9	3.7	8.1	0.6
C52	Vulva Vagina	Ž	0.5	-	-	-	-	-	-	-	0.6	-	-	-	0.5	-	-	1.2	3.1	2.3	0.2
C53	Grlić materice Cervix uteri	Ž	12.9	-	-	-	-	0.6	-	2.7	6.9	10.6	15.9	20.9	27.3	25.9	24.1	25.4	33.0	7.3	
C54	Materica, telo Corpus uteri	Ž	5.8	-	-	-	-	-	-	-	-	0.6	1.0	6.7	9.9	12.9	16.1	13.6	25.3	2.6	
C55	Materica, neoznačeni deo Uterus, unspecified part	Ž	3.3	-	-	-	-	-	-	-	0.6	0.6	0.5	4.9	3.0	7.2	6.8	13.6	12.7	1.5	
C56	Jajnik Ovary	Ž	10.7	-	-	-	-	-	0.5	1.6	3.4	1.7	9.8	14.7	19.4	30.2	25.3	34.6	24.0	5.7	
C57	Ženski gen.org., dr. neoz. lok. Other & unspec.parts of fem.gen.org.	Ž	0.6	-	-	-	-	-	-	-	-	-	-	0.5	0.9	-	0.7	3.1	2.5	1.8	0.3
C58	Placenta	Ž	0.0	-	-	-	-	-	-	-	-	-	-	-	-	-	-	-	-	-	0.0
C60	Penis	M	0.6	-	-	-	-	-	-	-	0.6	-	0.5	0.9	1.6	0.8	1.5	3.1	2.0	0.4	
C61	Prostata Prostate	M	24.9	-	-	-	-	0.5	-	-	-	0.6	1.1	1.4	15.0	27.7	47.7	116.8	253.0	10.7	
C62	Testis	M	0.5	-	-	-	-	2.7	0.5	1.6	-	0.6	0.5	-	-	-	-	0.8	1.4	0.5	
C63	Muški gen. org., dr. neoz. org. Other & unspec. male genital organs	M	0.0	-	-	-	-	-	-	-	-	-	-	-	-	-	-	-	-	-	0.0
C64	Bubreg Kidney, except renal pelvis	M	5.4	-	0.7	-	-	-	-	1.1	0.6	0.6	6.4	5.5	8.5	15.5	17.6	17.2	21.7	3.1	
C65	Bubrežna karlica Renal pelvis	Ž	3.0	-	-	-	-	-	-	-	0.6	1.1	1.0	1.3	3.0	1.4	3.1	10.5	19.9	1.1	
C66	Ureter	M	0.5	-	-	-	-	-	-	-	-	-	-	-	-	-	-	3.3	0.7	3.9	2.0
C66	Ureter	Ž	0.4	-	-	-	-	0.6	-	-	-	-	0.6	-	0.4	-	0.7	1.9	1.9	0.9	0.2
C66	Ureter	M	0.3	-	-	-	-	-	-	-	-	-	-	-	-	-	-	1.5	3.1	1.4	0.1
C66	Ureter	Ž	0.2	-	-	-	-	-	-	-	-	-	-	-	-	-	-	-	1.2	1.8	0.1
C67	Mokraćna bešika Bladder	M	13.6	-	-	-	-	-	-	0.6	0.6	1.6	6.0	12.3	30.1	46.2	52.5	102.4	6.6		
C67	Mokraćna bešika	Ž	3.7	-	-	-	-	-	-	-	1.1	0.5	1.8	2.0	4.3	6.2	14.2	24.4	1.4		
C68	Urinarni organi, dr. neoz. org. Other & unspecified urinary organs	M	0.0	-	-	-	-	-	-	-	-	-	-	-	-	-	-	-	-	0.0	
C68	Urinarni organi, dr. neoz. org.	Ž	0.1	-	-	-	-	-	-	-	-	-	-	-	-	-	-	0.6	0.5	0.0	
C69	Oko, pripojni oka Eye and adnexa	M	0.3	-	-	-	-	-	-	-	-	-	-	0.5	-	0.8	2.9	-	1.4	0.2	
C69	Oko, pripojni oka	Ž	0.4	-	-	-	-	-	-	-	-	-	-	-	-	-	-	1.2	3.2	0.1	
C70	Moždaniće Meninges	M	0.3	-	-	-	-	-	-	-	-	-	-	-	1.1	-	-	2.4	1.4	0.1	
C70	Moždaniće	Ž	0.9	-	-	-	-	-	-	-	-	-	-	0.4	1.5	2.2	3.7	2.5	3.2	0.4	
C71	Mozak Brain	M	10.1	2.8	0.7	2.0	0.6	0.5	2.1	3.3	4.7	4.0	8.0	13.7	22.4	29.3	25.0	29.0	24.4	6.6	
C71	Mozak	Ž	8.2	1.5	-	0.7	0.6	1.1	0.5	1.1	1.1	4.5	2.1	12.4	13.4	19.4	23.5	28.4	17.6	4.5	
C72	Centralni ner. sis., dr. delovi Spinal cord, cran. nerv. & oth. parts of CNS	M	0.3	-	-	0.7	-	-	0.5	-	-	-	-	0.5	0.5	-	0.7	1.6	0.7	0.2	
C72	Centralni ner. sis., dr. delovi	Ž	0.3	0.7	0.8	-	-	-	-	-	-	-	0.6	1.0	0.4	-	0.6	-	-	0.3	
C73	Štitasta žlezda Thyroid gland	M	0.7	-	-	-	-	-	-	-	-	-	-	1.1	-	0.5	2.4	0.7	3.9	4.7	
C73	Štitasta žlezda	Ž	1.3	-	-	-	-	-	-	-	-	-	-	0.5	1.3	1.0	-	2.5	4.3	8.1	
C74	Nadbubrežna žlezda Adrenal gland	M	0.5	-	-	-	-	-	-	-	-	-	-	0.5	0.9	2.1	0.8	-	0.8	2.0	
C74	Nadbubrežna žlezda	Ž	0.5	-	-	-	-	-	-	-	-	-	-	0.5	0.7	2.5	2.5	1.4	0.2		
C75	Endokrine žlezde, druge Other endocrine glands & related structures	M	0.2	-	-	-	-	-	-	-	-	-	-	0.5	-	-	-	0.7	-	1.4	
C75	Endokrine žlezde, druge	Ž	0.2	-	-	-	-	-	0.5	-	-	1.1	-	-	-	-	-	0.6	-	0.5	
C76	Ostale lokalizacije Other & ill defined sites	M	2.8	-	-	-	-	-	0.5	-	-	-	-	3.2	3.2	9.0	7.3	11.8	15.6	1.4	
C76	Ostale lokalizacije	Ž	5.3	-	-	-	-	-	0.5	-	-	-	0.6	3.1	4.5	4.3	17.9	17.3	29.0	2.1	
C77-C80	Sekundarne lok., bez ozn. lok. Unspec.mal.neo.of lymph nod.&without of spec.of site	M	10.4	-	0.7	-	0.6	-	0.5	-	-	-	0.6	5.9	11.4	17.1	22.0	33.8	51.0	43.4	
C77-C80	Sekundarne lok., bez ozn. lok.	Ž	8.9	-	-	-	-	-	-	0.5	1.1	1.7	4.1	9.3	13.4	12.9	19.1	26.0	42.1		
C81	Hodgkinova bolest Hodgkin's disease	M	1.4	-	-	-	-	0.5	1.1	-	0.6	-	0.5	2.7	3.2	2.4	2.2	4.7	4.7		
C81	Hodgkinova bolest	Ž	0.9	-	-	-	-	0.6	1.1	1.1	1.1	-	-	-	2.0	-	2.5	0.6	4.5		
C82	Ne-Hodgkinov lim., folikularni Follicular non-Hodgkin's lymphoma	M	0.6	-	-	-	-	-	-	-	-	-	1.6	0.5	1.6	1.6	0.7	2.4	2.0		
C82	Ne-Hodgkinov lim., folikularni	Ž	0.3	-	-	-	-	-	-	-	-	-	0.5	0.9	1.0	1.4	0.0	0.6	0.5		
C83	Ne-Hodgkinov lim., difuzni Diffuse non-Hodgkin's lymphoma	M	0.8	-	-	-	-	-	1.1	-	-	0.6	-	0.5	2.7	0.8	1.5	3.9	3.4		
C83	Ne-Hodgkinov lim., difuzni	Ž	1.0	-	-	-	0.6	0.6	0.5	-	0.6	0.5	1.3	2.0	2.9	3.1	2.5	1.8	0.6		
C84	Periferni i kožni lim. T-ćelija Peripheral & cutaneous T-cell lymphomas	M	0.1	-	-	-	-	-	-	-	-	-	-	-	-	-	-	0.7	-		
C84	Periferni i kožni lim. T-ćelija	Ž	0.1	-	-	-	-	-	-	-	-	-	-	-	0.5	-	-	0.6	-		
C85	Ne-Hodgkinovi limfomi, drugi Other & unspec. types of non-Hodgkin's lymph	M	2.8	-	0.7	-	0.6	1.1	0.5	-	0.0	1.7	2.1	1.4	5.9	4.9	9.5	12.5	8.1		
C85	Ne-Hodgkinovi limfomi, drugi	Ž	1.7	-	-	-	0.6	1.1	-	-	0.6	-	0.5	1.3	2.0	3.6	5.6	5.6	6.8		
C88	Zloćudne imunoprolifer. bolesti Malignant immunoproliferative diseases	M	0.1	-	-	-	-	-	-	-	-	-	-	-	0.5	0.8	-	-	0.7		
C88	Zloćudne imunoprolifer. bolesti	Ž	0.0	-	-	-	-	-	-	-	-	-	-	0.4	-	-	-	-	-		
C90	Mult. mijelom i zloć. tum. plaz. ćel. Multiple myel. and malig. plasma cell neoplasm	M	2.3	-	-	-	-	-	-	-	-	1.2	2.7	2.3	4.3	10.6	7.3	7.8	4.7		
C90	Mult. mijelom i zloć. tum. plaz. ćel.	Ž	2.0	-	-	-	-	-	-	-	-	-	0.5	1.8	4.0	7.9	6.2	7.4	4.5		
C91	Limfoidna leukemija Lymphoblastic, lymphoid leukaemia	M	3.3	-	0.7	-	-	-	0.5	-	1.2	-	1.1	3.7	2.1	4.9	12.5	11.0	21.7		
C91	Limfoidna leukemija	Ž	2.2	0.7	0.8	-	1.2	-	1.1	0.5	0.6	0.6	-	0.9	2.0	5.0	4.3	6.2	10.0		
C92	Mijeloidna leukemija Myeloid leukaemia	M	3.2	-	-	-	1.2	-	1.1	-	0.6	2.3	3.2	2.7	3.2	6.5	6.6	18.0	10.9		
C92	Mijeloidna leukemija	Ž	3.3	0.7	-	-	0.6	0.6	1.6	0.5	1.7	2.2	2.6	3.1	5.0	5.8	5.6	13.6	8.1		
C93	Monocitna leukemija Monocytic leukaemia	M	0.3	-	-	-	0.6	-	-	-	0.5	-	-	0.5	-	-	-	-	2.7		
C93	Monocitna leukemija	Ž	0.1	-	-	-	-	-	0.5	-	-	-	0.5	0.4	-	0.7	-	-	0.1		
C94	Leukemije, druge Other leukaemias of specified cells	M	0.2	-	-	-	-	-	-	-	-	-	-	0.5	-	1.5	0.8	1.4	0.1		
C94	Leukemije, druge	Ž	0.2	-	-	-	-	-	-	-	-	-	-	0.4	-	0.7	1.2	0.6	0.5		
C95	Leukemije, neoznačene Leukaemia, unspecified cell type	M	0.8	-	-	-	-	-	-	-	0.6	-	-	-	0.5	-	1.6	3.7	3.9		
C95	Leukemije, neoznačene	Ž	0.6	-	-	-	0.6	0.6	-	-	-	0.6	-	-	-	2.2	1.2	1.2	3.2		
C96	Dr. zloć. tum. hematop. sist. Other&unsp.mal.neo.of lym.,haem.& tissue	M	0.0	-	-	-	-	-	-	-	-	-	-	-	-	-	-	-	-		
C96	Dr. zloć. tum. hematop. sist.	Ž	0.1	-	-	-	-	-	-	-	-	-	-	-	-	-	-	-	-		
C00-C96	Sve lokalizacije, bez kože	M	300.7	2.8	5.2	2.6	5.9	9.7	11.6	12.5	28.0	65.3	158.8	301.2	532.0	697.1	895.3	1204.8	1422.6		
C00-C96	Sve lokalizacije, bez kože	Ž	219.6	4.4	2.3	2.1	5.0	6.1													

Tabela 22. Ukupan broj novoobolelih, broj i procenat histološki i citološki verifikovanih slučajeva raka prema primarnoj lokalizaciji i polu, centralna Srbija, 2006. godina

Table 22. Total number of new cancer cases, number and percentage of histologically and cytologically confirmed cancer cases by primary site and sex, Central Serbia 2006

MKB-10 (ICD-10) Šifra (Code)	Primarna lokalizacija Primary site	POL (SEX) M (Male) Z (Female)	Ukupan broj novoobolelih All new cases		Broj histo. / cito. verifikovanih Number of cases histo./ cyto. confirmed		%
			12835	11758	11018	10338	
C00	Usna	M	91		90		98.9%
	Lip	Ž	36		30		83.3%
C01	Jezik, koren	M	41		35		85.4%
	Base of tongue	Ž	11		9		81.8%
C02	Jezik, drugi delovi	M	37		22		59.5%
	Tongue, other & unspecified parts	Ž	8		7		87.5%
C03	Desni	M	6		4		66.7%
	Gum	Ž	5		3		60.0%
C04	Pod usta	M	32		30		93.8%
	Floor of mouth	Ž	11		4		36.4%
C05	Nepce	M	14		14		100.0%
	Palate	Ž	7		6		85.7%
C06	Usta, drugi delovi	M	20		15		75.0%
	Mouth, other & unspecified parts	Ž	25		20		80.0%
C07	Parotidna žlezda	M	33		29		87.9%
	Parotid gland	Ž	26		18		69.2%
C08	Pljuvačna žlezda	M	11		9		81.8%
	Other & unspec. major salivary gl.	Ž	12		7		58.3%
C09	Krajnik	M	33		29		87.9%
	Tonsil	Ž	13		10		76.9%
C10	Orofaringis	M	19		12		63.2%
	Oropharynx	Ž	6		2		33.3%
C11	Nasofaringis	M	17		15		88.2%
	Nasopharynx	Ž	13		12		92.3%
C12	Piriformni sinus	M	2		2		100.0%
	Pyiform sinus	Ž	2		0		0.0%
C13	Hipofaringis	M	71		69		97.2%
	Hypopharynx	Ž	16		11		68.8%
C14	Usne, usta, ždrelo, drugi delovi	M	18		12		66.7%
	Other & ill def. sites in the lip oral cavity & pharynx	Ž	2		2		100.0%
C15	Jednjak	M	123		120		97.6%
	Oesophagus	Ž	45		35		77.8%
C16	Želudac	M	542		523		96.5%
	Stomach	Ž	348		320		92.0%
C17	Tanko crevo	M	22		11		50.0%
	Small intestine	Ž	20		14		70.0%
C18	Debelo crevo	M	735		700		95.2%
	Colon	Ž	511		500		97.8%
C19	Rektosigmoidni prelaz	M	107		99		92.5%
	Rectosigmoid junction	Ž	73		70		95.9%
C20	Rektum	M	637		630		98.9%
	Rectum	Ž	422		385		91.2%
C21	Anus i analni kanal	M	16		10		62.5%
	Anus & anal canal	Ž	12		10		83.3%
C22	Jetra, žučni kanali	M	210		189		90.0%
	Liver & intrahepatic bile ducts	Ž	128		98		76.6%
C23	Žučna kesica	M	44		30		68.2%
	Gallbladder	Ž	97		77		79.4%
C24	Žučni kanali, drugi delovi	M	29		22		75.9%
	Biliary tract, other & unspec. parts	Ž	33		23		69.7%
C25	Pankreas	M	266		261		98.1%
	Pancreas	Ž	208		189		90.9%
C26	Org. za var., neodrež. lok.	M	33		10		30.3%
	Other & ill-defined digestive organs	Ž	23		20		87.0%
C30	Nosna šupljina i srednje uvo	M	13		10		76.9%
	Nasal cavity & middle ear	Ž	7		4		57.1%
C31	Nosni sinusi	M	26		10		38.5%
	Accessory sinuses	Ž	9		2		22.2%
C32	Larings	M	578		560		96.9%
	Larynx	Ž	67		51		76.1%
C33	Traheja	M	20		3		15.0%
	Trachea	Ž	9		2		22.2%
C34	Bronh i pluća	M	2735		2699		98.7%
	Bronchus & lung	Ž	778		770		99.0%
C37	Timus	M	0		0		0.0%
	Thymus	Ž	6		2		33.3%
C38	Srce, mediastinum, pleura	M	31		29		93.5%
	Heart, mediastinum & pleura	Ž	17		12		70.6%
C39	Toraks, druge lokalizacije	M	3		1		33.3%
	Other & ill-def. in the res. sys. & intrath. org.	Ž	6		2		33.3%
C40	Kosti i zglob. hrskavice udova	M	34		32		94.1%
	Bone & articular cartilage of limbs	Ž	31		23		74.2%
C41	Kosti i zglob. hrskav., dr. lok.	M	24		14		58.3%
	Bone & artic. cart. of other & unspec. parts	Ž	38		30		78.9%
C43	Koža, maligni melanom	M	145		142		97.9%
	Malignant melanoma of skin	Ž	130		123		94.6%
C44	Koža, drugi mal. tumori	M	1731		1537		88.8%
	Skin, other malignomas	Ž	1633		1232		75.4%
C45	Mezoteliom	M	7		5		71.4%
	Mesothelioma	Ž	4		1		25.0%
C46	Kaposijev sarkom	M	4		2		50.0%
	Kaposi's sarcoma	Ž	1		1		100.0%
C47	Periferni nervi i aut. ner. sis.	M	7		4		57.1%
	Peripheral nerves & auton. nerv. sys.	Ž	9		4		44.4%
C48	Peritoneum i retroperitoneum	M	18		16		88.9%
	Retroperitoneum & peritoneum	Ž	26		20		76.9%
C49	Vezivna i meka tkiva, drugi	M	89		60		67.4%
	Other connective and soft tissue	Ž	68		37		54.4%
C50	Dojka	M	56		53		94.6%
	Breast	Ž	2784		2603		93.5%

Tabela 22.1 Ukupan broj novoobolelih, broj i procenat histološki i citološki verifikovanih slučajeva raka prema primarnoj lokalizaciji i polu, centralna Srbija, 2006. godina (nastavak)

Table 22.1 Total number of new cancer cases, number and percentage of histologically and cytologically confirmed cancer cases by primary site and sex, Central Serbia 2006 (continued)

MKB-10 (ICD-10) Šifra (Code)	Primarna lokalizacija Primary site	POL (SEX) M (Male) Z(Female)	Ukupan broj novoobolelih All new cases		Broj histo. / cito. verifikovanih Number of cases histo. cyto. confirmed		%
			12835	11018	85.8%		
			11758	10338	87.9%		
C51	Vulva Vulva	Ž	83	80		96.4%	
C52	Vagina Vagina	Ž	24	23		95.8%	
C53	Grlić materice Cervix uteri	Ž	1053	948		90.0%	
C54	Materica, telo Corpus uteri	Ž	646	564		87.3%	
C55	Materica, neoznačeni deo Uterus, unspecified part	Ž	27	26		96.3%	
C56	Jajnik Ovary	Ž	428	420		98.1%	
C57	Ženski gen. org., dr. neoz. lok. Other & unspec. parts of fem. gen. org.	Ž	24	20		83.3%	
C58	Placenta Placenta	Ž	2	1		50.0%	
C60	Penis Penis	M	30	27		90.0%	
C61	Prostata Prostate	M	1330	1215		91.4%	
C62	Testis Testis	M	173	155		89.6%	
C63	Muški gen. org., dr. neoz. org. Other & unspec. male genital organs	M	4	3		75.0%	
C64	Bubreg Kidney, except renal pelvis	M Ž	287 170	230 137		80.1% 80.6%	
C65	Bubrežna karlica Renal pelvis	M Ž	33 26	15 19		45.5% 73.1%	
C66	Ureter Ureter	M Ž	29 16	20 11		69.0% 68.8%	
C67	Mokraćna bešika Bladder	M Ž	848 242	792 215		93.4% 88.8%	
C68	Urinarini organi, dr. neoz. org. Other & unspecified urinary organs	M Ž	5 5	2 1		40.0% 20.0%	
C69	Oko, pripoji oka Eye and adnexa	M Ž	46 38	32 26		69.6% 68.4%	
C70	Moždanice Meninges	M Ž	29 36	22 29		75.9% 80.6%	
C71	Mozak Brain	M Ž	343 255	312 253		91.0% 99.2%	
C72	Centralni ner. sis., dr. delovi Spinal cord, cran. nerv. & oth. parts of CNS	M Ž	11 7	6 4		54.5% 57.1%	
C73	čtitasta žlezda Thyroid gland	M Ž	45 153	31 99		68.9% 64.7%	
C74	Nadbubrežna žlezda Adrenal gland	M Ž	9 15	9 10		100.0% 66.7%	
C75	Endokrine žlezde, druge Oth. endoc. gl. & related structures	M Ž	8 14	4 5		50.0% 35.7%	
C76	Ostale lokalizacije Other & ill defined sites	M Ž	36 63	11 12		30.6% 19.0%	
C77-C80	Sekundarne lok., bez ozn. lok. Unspec. mal. neo. of lymph nod. & without of spec. of site	M Ž	298 238	250 203		83.9% 85.3%	
C81	Hodgkinova bolest Hodgkin's disease	M Ž	63 61	60 59		95.2% 96.7%	
C82	Ne-Hodgkinov lim., folikularni Follicular non-Hodgkin's lymphoma	M Ž	50 57	50 55		100.0% 96.5%	
C83	Ne-Hodgkinov lim., difuzni Diffuse non-Hodgkin's lymphoma	M Ž	44 44	39 37		88.6% 84.1%	
C84	Periferni i kožni lim. T-ćelija Peripheral & cutaneous T-cell lymphomas	M Ž	6 6	4 4		66.7% 66.7%	
C85	Ne-Hodgkinovi limfomi, drugi Oth. & unspec. types of non-Hodgkin's lymphoma	M Ž	99 64	88 60		88.9% 93.8%	
C88	Zloćudne imunoprolifer. bolesti Malignant immunoproliferative diseases	M Ž	3 0	2 0		66.7% 0.0%	
C90	Mult. mijelom i zloć. tum. plaz. ćel. Multiple myeloma and malignant plasma cell neoplasms	M Ž	50 59	50 58		100.0% 98.3%	
C91	Limfoidna leukemija Lymphoblastic, lymphoid leukaemia	M Ž	111 76	107 74		96.4% 97.4%	
C92	Mijeloidna leukemija Myeloid leukaemia	M Ž	74 61	73 60		98.6% 98.4%	
C93	Monocitna leukemija Monocytic leukaemia	M Ž	6 4	6 3		100.0% 75.0%	
C94	Leukemije, druge Other leukaemias of specified cells	M Ž	2 3	2 3		100.0% 100.0%	
C95	Leukemije, neoznačene Leukaemia, unspecified cell type	M Ž	32 21	25 17		78.1% 81.0%	
C96	Dr. zloć. tum. hematop. sist. Oth. & unspec. mal. neo. of lymph., haematopoietic & relate	M Ž	1 1	1 1		100.0% 100.0%	
C00-C96 (C44)	Sve lokalizacije, bez kože All sites but skin	M Ž	11104 10125	9481 9106		85.4% 89.9%	

Tabela 23. Broj novoobolelih i incidencija od raka na 100.000 stanovnika prema primarnoj lokalizaciji, uzrastu i polu, centralna Srbija, 2006. godina

Table 23. Number of new cancer cases and cancer incidence rates per 100.000 population by primary site, age and sex, Central Serbia, 2006

MKB-10 (ICD-10) Šifra (Code)	Primarna lokalizacija Primary site	POL SEX	Ukupno		Sirova incid.		Standardizovana incidencija (Stand. incidence)	
			M (Male)	(All)	Crude rate	ASR(E)	ASR(W)	TRUNC
			11758	423.3	324.5	240.6	149.8	
C00	Usna Lip	M	91	3.5	2.7	1.8	0.7	
		Ž	36	1.3	0.9	0.7	0.3	
C01	Jezik, koren Base of tongue	M	41	1.6	1.4	1.1	0.9	
		Ž	11	0.4	0.3	0.2	0.1	
C02	Jezik, drugi delovi Tongue, other & unspecified parts	M	37	1.4	1.2	0.9	0.6	
		Ž	8	0.3	0.2	0.1	0.1	
C03	Desni Gum	M	6	0.2	0.2	0.1	0.0	
		Ž	5	0.2	0.1	0.1	0.0	
C04	Pod usta Floor of mouth	M	32	1.2	1.0	0.8	0.6	
		Ž	11	0.4	0.3	0.2	0.1	
C05	Nepce Palate	M	14	0.5	0.5	0.3	0.3	
		Ž	7	0.3	0.2	0.2	0.1	
C06	Usta, drugi delovi Mouth, other & unspecified parts	M	20	0.8	0.6	0.4	0.2	
		Ž	25	0.9	0.7	0.6	0.4	
C07	Parotidna žlezda Parotid gland	M	33	1.3	1.0	0.6	0.3	
		Ž	26	0.9	0.7	0.5	0.3	
C08	Pjivačna žlezda Other & unspec. major salivary gl.	M	11	0.4	0.4	0.3	0.3	
		Ž	12	0.4	0.4	0.3	0.1	
C09	Krajnik Tonsil	M	33	1.3	1.0	0.7	0.5	
		Ž	13	0.5	0.4	0.3	0.2	
C10	Orofarings Oropharynx	M	19	0.7	0.6	0.4	0.3	
		Ž	6	0.2	0.2	0.1	0.1	
C11	Nasofarings Nasopharynx	M	17	0.6	0.6	0.5	0.4	
		Ž	13	0.5	0.4	0.3	0.2	
C12	Piriformni sinus Pyriform sinus	M	2	0.1	0.1	0.1	0.0	
		Ž	2	0.1	0.1	0.0	0.0	
C13	Hipofarings Hypopharynx	M	71	2.7	2.3	1.7	1.2	
		Ž	16	0.6	0.5	0.4	0.2	
C14	Usne, usta, ždrelo, drugi delovi Other & ill def. sites in the lip oral cavity & pharynx	M	18	0.7	0.6	0.4	0.3	
		Ž	2	0.1	0.1	0.0	0.0	
C15	Jednjak Oesophagus	M	123	4.7	3.9	2.8	1.8	
		Ž	45	1.6	1.2	0.9	0.5	
C16	Želudac Stomach	M	542	20.6	16.7	11.6	6.2	
		Ž	348	12.5	8.8	6.2	3.2	
C17	Tanko crevo Small intestine	M	22	0.8	0.7	0.5	0.2	
		Ž	20	0.7	0.5	0.4	0.3	
C18	Debelo crevo Colon	M	735	27.9	22.1	15.3	7.7	
		Ž	511	18.4	12.8	9.0	4.8	
C19	Rektosigmoidni prelaz Rectosigmoid junction	M	107	4.1	3.3	2.4	1.4	
		Ž	73	2.6	1.8	1.3	0.6	
C20	Rektum Rectum	M	637	24.2	19.5	13.5	7.5	
		Ž	422	15.2	10.7	7.5	4.2	
C21	Anus i analni kanal Anus & anal canal	M	16	0.6	0.5	0.3	0.2	
		Ž	12	0.4	0.3	0.2	0.2	
C22	Jetra, žučni kanali Liver & intrahepatic bile ducts	M	210	8.0	6.4	4.5	2.1	
		Ž	128	4.6	3.0	2.0	0.7	
C23	Žučna kesha Gallbladder	M	44	1.7	1.3	0.9	0.3	
		Ž	97	3.5	2.3	1.6	0.7	
C24	Žučni kanali, drugi delovi Billiary tract, other & unspec. parts	M	29	1.1	0.9	0.7	0.5	
		Ž	33	1.2	0.8	0.5	0.2	
C25	Pankreas Pancreas	M	266	10.1	8.2	5.7	3.4	
		Ž	208	7.5	5.2	3.6	1.9	
C26	Org. za var., neodređ. lok. Other & ill-defined digestive organs	M	33	1.3	1.0	0.7	0.4	
		Ž	23	0.8	0.5	0.3	0.1	
C30	Nosna šupljina i srednje uvo Nasal cavity & middle ear	M	13	0.5	0.4	0.3	0.1	
		Ž	7	0.3	0.2	0.1	0.1	
C31	Nosni sinusi Accessory sinuses	M	26	1.0	0.8	0.6	0.4	
		Ž	9	0.3	0.3	0.2	0.1	
C32	Larings Larynx	M	578	22.0	18.5	13.5	9.3	
		Ž	67	2.4	1.9	1.4	0.9	
C33	Traheja Trachea	M	20	0.8	0.6	0.5	0.2	
		Ž	9	0.3	0.2	0.2	0.1	
C34	Bronh i pluća Bronchus & lung	M	2735	103.9	85.6	61.0	38.8	
		Ž	778	28.0	21.0	15.1	10.1	
C37	Timus Thymus	M	0	0.0	0.0	0.0	0.0	
		Ž	6	0.2	0.2	0.2	0.1	
C38	Srce, mediastinum, pleura Heart, mediastinum & pleura	M	31	1.2	1.0	0.7	0.5	
		Ž	17	0.6	0.5	0.3	0.2	
C39	Toraks, druge lokalizacije Other & ill-def. in the res. sys. & intrath. org.	M	3	0.1	0.1	0.1	0.0	
		Ž	6	0.2	0.2	0.1	0.1	
C40	Kosti i zglobovi, hrskavice udova Bone & articular cartilage of limbs	M	34	1.3	1.2	1.1	0.4	
		Ž	31	1.1	1.0	1.0	0.3	
C41	Kosti i zglobovi, hrskav., dr. lok. Bone & artic. cart. of other & unspec. parts	M	24	0.9	0.8	0.8	0.2	
		Ž	38	1.4	1.2	1.1	0.5	
C43	Koža, maligni melanom Malignant melanoma of skin	M	145	5.5	4.7	3.4	1.9	
		Ž	130	4.7	3.9	3.0	2.2	
C44	Koža, drugi mal. tumori Skin, other malignomas	M	1731	65.8	51.9	35.4	15.7	
		Ž	1633	58.8	40.0	27.7	13.1	
C45	Mezoteliom Mesothelioma	M	7	0.3	0.2	0.2	0.1	
		Ž	4	0.1	0.1	0.1	0.1	
C46	Kaposijev sarkom Kaposi's sarcoma	M	4	0.2	0.1	0.1	0.0	
		Ž	1	0.0	0.0	0.0	0.0	
C47	Periferni nervi i aut. ner. sis. Peripheral nerves & auton. nerv. sys.	M	7	0.3	0.2	0.2	0.1	
		Ž	9	0.3	0.3	0.2	0.1	
C48	Peritoneum i retroperitoneum Retroperitoneum & peritoneum	M	18	0.7	0.5	0.4	0.1	
		Ž	26	0.9	0.7	0.5	0.3	
C49	Vezivna i meka tkiva, drugi Other connective and soft tissue	M	89	3.4	3.0	2.4	1.1	
		Ž	68	2.4	2.0	1.7	0.8	
C50	Dojka Breast	M	56	2.1	1.7	1.2	0.7	
		Ž	2784	100.2	80.0	59.4	43.2	

Tabela 23.1 Broj novoobolelih i incidencija od raka na 100.000 stanovnika prema primarnoj lokalizaciji, uzrastu i polu, centralna Srbija, 2006. godina (nastavak)

Table 23.1 Number of new cancer cases and cancer incidence rates per 100.000 population by primary site, age and sex, Central Serbia, 2006 (continued)

MKB-10 (ICD-10) Šifra (Code)	Primarna lokalizacija Primary site	POL SEX M (Male) Z (Female)	Ukupno	Sirova incid.	Standardizovana incidencija (Stand. incidence)		TRUNC
			(All)	Crude rate	ASR(E)	ASR(W)	
			12835	487.8	396.5	282.8	146.9
			11758	423.3	324.5	240.6	149.8
C51	Vulva	Ž	83	3.0	2.2	1.5	1.0
C52	Vagina	Ž	24	0.9	0.6	0.4	0.3
C53	Grlić materice Cervix uteri	Ž	1053	37.9	33.1	25.8	20.6
C54	Materica, telo Corpus uteri	Ž	646	23.3	18.2	13.2	9.4
C55	Materica, neoznačeni deo Uterus, unspecified part	Ž	27	1.0	0.8	0.6	0.4
C56	Jajnik Ovary	Ž	428	15.4	12.4	9.4	6.2
C57	Ženski gen. org., dr. neoz. lok. Other & unspec. parts of fem. gen. org.	Ž	24	0.9	0.7	0.5	0.4
C58	Placenta	Ž	2	0.1	0.1	0.0	0.0
C60	Penis	M	30	1.1	0.9	0.7	0.4
C61	Prostata Prostate	M	1330	50.5	37.6	24.2	6.2
C62	Testis	M	173	6.6	6.5	6.2	2.2
C63	Muški gen. org., dr. neoz. org. Other & unspec. male genital organs	M	4	0.2	0.1	0.1	0.0
C64	Bubreg Kidney, except renal pelvis	M	287	10.9	9.1	6.6	4.0
C65	Bubrežna karlica Renal pelvis	Ž	170	6.1	4.5	3.3	1.7
C66	Ureter	M	33	1.3	1.0	0.6	0.3
C67	Mokraćna bešika Bladder	Ž	26	0.9	0.6	0.4	0.2
C68	Ureter	M	29	1.1	0.8	0.5	0.1
C69	Mokraćna bešika Bladder	Ž	16	0.6	0.4	0.2	0.1
C70	Urinarne organe, dr. neoz. org. Other & unspecified urinary organs	M	848	32.2	25.2	17.1	7.7
C71	Oko, pripoji oka Eye and adnexa	Ž	242	8.7	6.1	4.3	2.5
C72	Moždance Meninges	M	5	0.2	0.2	0.1	0.0
C73	Mozak Brain	Ž	5	0.2	0.1	0.1	0.1
C74	Centralni ner. sis., dr. delovi Spinal cord, cran. nerv. & oth. parts of CNS	M	46	1.7	1.5	1.3	0.5
C75	čitasta žlezda Thyroid gland	Ž	38	1.4	1.1	0.9	0.5
C76	Nadbubrežna žlezda Adrenal gland	M	29	1.1	1.0	0.8	0.4
C77	Endokrine žlezde, druge Oth. endoc. gl. & related structures	Ž	36	1.3	1.1	0.9	0.6
C78	Ostale lokalizacije Other & ill defined sites	M	343	13.0	11.6	9.5	5.2
C79	Sekundarne lok., bez ozn. lok. Unspec. mal. neo. of lymph nod. & without of spec. of site	Ž	255	9.2	8.0	6.8	3.1
C80	Hodgkinova bolest Hodgkin's disease	M	11	0.4	0.4	0.3	0.2
C81	Ne-Hodgkinov lim., folikularni Follicular non-Hodgkin's lymphoma	Ž	7	0.3	0.2	0.2	0.0
C82	Ne-Hodgkinov lim., difuzni Diffuse non-Hodgkin's lymphoma	M	45	1.7	1.5	1.1	0.7
C83	Periferni i kožni lim. T-ćelija Peripheral & cutaneous T-cell lymphomas	Ž	153	5.5	5.0	4.1	2.4
C84	Ne-Hodgkinovi limfomi, drugi Oth. & unspec. types of non-Hodgkin's lymphoma	M	9	0.3	0.3	0.2	0.2
C85	Zloćudne imunoprolifer. bolesti Malignant immunoproliferative diseases	Ž	15	0.5	0.5	0.4	0.2
C86	Mult. mijelom i zloć. tum. plaz. ćel. Multiple myeloma and malignant plasma cell neoplasms	M	8	0.3	0.3	0.2	0.1
C87	Limfoidna leukemija Lymphoblastic, lymphoid leukaemia	Ž	14	0.5	0.5	0.4	0.3
C88	Mijeloidna leukemija Myeloid leukaemia	M	36	1.4	1.2	0.9	0.5
C89	Monocitna leukemija Monocytic leukaemia	Ž	63	2.3	1.6	1.2	0.4
C90	Leukemije, druge Other leukaemias of specified cells	M	298	11.3	9.5	7.2	3.7
C91	Leukemije, neoznačene Leukaemia, unspecified cell type	Ž	238	8.6	6.6	5.0	2.5
C92	Dr. zloć. tum. hematop. sist. Oth. & unspec. mal. neo. of lymph., haematopoietic & relat	M	63	2.4	2.2	2.0	1.0
C93	Sve lokalizacije, bez kože All sites but skin	Ž	61	2.2	2.1	2.0	0.7
C94	Leukemije, neoznačene Leukaemia, unspecified cell type	M	50	1.9	1.6	1.2	0.6
C95	Dr. zloć. tum. hematop. sist. Oth. & unspec. mal. neo. of lymph., haematopoietic & relat	Ž	57	2.1	1.7	1.3	0.8
C96	Leukemije, druge Other leukaemias of specified cells	M	44	1.7	1.4	1.1	0.5
C97	Leukemije, neoznačene Leukaemia, unspecified cell type	Ž	44	1.6	1.3	1.0	0.6
C98	Dr. zloć. tum. hematop. sist. Oth. & unspec. mal. neo. of lymph., haematopoietic & relat	M	6	0.2	0.2	0.2	0.1
C99	Dr. zloć. tum. hematop. sist. Oth. & unspec. mal. neo. of lymph., haematopoietic & relat	Ž	6	0.2	0.2	0.1	0.1
C00-C96 (C44)	Sve lokalizacije, bez kože All sites but skin	M	99	3.8	3.3	2.6	1.2
		Ž	64	2.3	1.8	1.5	0.8
		M	3	0.1	0.1	0.1	0.0
		Ž	0	0.0	0.0	0.0	0.0
		M	50	1.9	1.6	1.1	0.7
		Ž	59	2.1	1.5	1.1	0.6
		M	111	4.2	3.7	3.2	1.1
		Ž	76	2.7	2.1	1.8	0.6
		M	74	2.8	2.4	2.0	0.8
		Ž	61	2.2	1.8	1.5	0.6
		M	6	0.2	0.2	0.1	0.1
		Ž	4	0.1	0.1	0.1	0.0
		M	2	0.1	0.1	0.1	0.1
		Ž	3	0.1	0.1	0.1	0.1
		M	32	1.2	1.0	0.8	0.3
		Ž	21	0.8	0.6	0.5	0.2
		M	1	0.0	0.0	0.0	0.0
		Ž	1	0.0	0.0	0.0	0.0
C00-C96 (C44)	Sve lokalizacije, bez kože All sites but skin	M	11104	422.0	344.7	247.5	131.2
		Ž	10125	364.5	284.5	212.8	136.7

Tabela 24. Broj umrlih i mortalitet od raka na 100.000 stanovnika prema primarnoj lokalizaciji, uzrastu i polu, centralna Srbija, 2006. godina

Table 24. Number of death cancer cases and cancer mortality rates per 100.000 population by primary site, age and sex, Central Serbia, 2006

MKB-10 (ICD-10) Šifra (Code)	Primarna lokalizacija Primary site	POL SEX M (Male) Z (Female)	Ukupno	Sirovi mort.	Standardizovani mortalitet (Stand. mortality)		
			(All)	Crude rate	ASR(E)	ASR(W)	TRUNC
			7968 6146	302.8 221.3	239.6 152.5	163.9 105.8	79.7 55.1
C00	Usna Lip	M Ž	23 4	0.9 0.1	0.7 0.1	0.4 0.0	0.1 0.0
C01	Jezik, koren Base of tongue	M Ž	17 4	0.6 0.1	0.6 0.1	0.4 0.1	0.3 0.0
C02	Jezik, drugi delovi Tongue, other & unspecified parts	M Ž	24 8	0.9 0.3	0.8 0.2	0.6 0.2	0.3 0.1
C03	Desni Gum	M Ž	1 0	0.0 0.0	0.0 0.0	0.0 0.0	0.0 0.0
C04	Pod usta Floor of mouth	M Ž	24 3	0.9 0.1	0.8 0.1	0.6 0.0	0.4 0.0
C05	Nepece Palate	M Ž	3 3	0.1 0.1	0.1 0.1	0.1 0.0	0.1 0.0
C06	Usta, drugi delovi Mouth, other & unspecified parts	M Ž	8 8	0.3 0.3	0.2 0.2	0.2 0.2	0.1 0.1
C07	Parotidna žlezda Parotid gland	M Ž	16 11	0.6 0.4	0.4 0.2	0.3 0.1	0.0 0.0
C08	Pjivačna žlezda Other & unspec. major salivary gl.	M Ž	2 2	0.1 0.1	0.1 0.0	0.0 0.0	0.0 0.0
C09	Krajnik Tonsil	M Ž	13 4	0.5 0.1	0.4 0.1	0.3 0.1	0.1 0.0
C10	Orofarings Oropharynx	M Ž	13 5	0.5 0.2	0.4 0.1	0.3 0.1	0.2 0.0
C11	Nasofarings Nasopharynx	M Ž	12 5	0.5 0.2	0.4 0.1	0.3 0.1	0.2 0.0
C12	Piriformni sinus Pyriform sinus	M Ž	3 0	0.1 0.0	0.1 0.0	0.1 0.0	0.1 0.0
C13	Hipofarings Hypopharynx	M Ž	53 12	2.0 0.4	1.7 0.4	1.2 0.3	0.8 0.2
C14	Usne, usta, ždrelo, drugi delovi Other & ill def. sites in the lip oral cavity & pharynx	M Ž	28 7	1.1 0.3	0.9 0.2	0.6 0.1	0.4 0.1
C15	Jednjak Oesophagus	M Ž	123 40	4.7 1.4	3.7 1.1	2.6 0.8	1.6 0.5
C16	Želudac Stomach	M Ž	487 283	18.5 10.2	14.6 6.7	9.9 4.6	5.0 2.0
C17	Tanko crevo Small intestine	M Ž	12 15	0.5 0.5	0.4 0.3	0.2 0.2	0.1 0.1
C18	Debelo crevo Colon	M Ž	466 373	17.7 13.4	13.7 8.7	9.2 5.8	3.9 2.3
C19	Rektosigmoidni prelaz Rectosigmoid junction	M Ž	41 47	1.6 1.7	1.2 1.0	0.8 0.6	0.4 0.2
C20	Rektum Rectum	M Ž	418 292	15.9 10.5	12.2 6.8	8.0 4.5	3.1 2.0
C21	Anus i analni kanal Anus & anal canal	M Ž	5 2	0.2 0.1	0.1 0.1	0.1 0.0	0.0 0.0
C22	Jetra, žučni kanali Liver & intrahepatic bile ducts	M Ž	309 208	11.7 7.5	9.1 4.7	6.1 3.1	2.4 1.3
C23	Žučna kesha Gallbladder	M Ž	42 109	1.6 3.9	1.2 2.4	0.8 1.6	0.3 0.5
C24	Žučni kanali, drugi delovi Billiary tract, other & unspec. parts	M Ž	46 28	1.7 1.0	1.3 0.6	0.9 0.4	0.3 0.1
C25	Pankreas Pancreas	M Ž	377 296	14.3 10.7	11.3 7.0	7.8 4.7	3.9 2.2
C26	Org. za var., neodređ. lok. Other & ill-defined digestive organs	M Ž	27 21	1.0 0.8	0.8 0.5	0.5 0.3	0.2 0.1
C30	Nosna šupljina i srednje uvo Nasal cavity & middle ear	M Ž	9 1	0.3 0.0	0.3 0.0	0.2 0.0	0.1 0.0
C31	Nosni sinusi Accessory sinuses	M Ž	11 3	0.4 0.1	0.4 0.1	0.2 0.0	0.2 0.0
C32	Larings Larynx	M Ž	274 30	10.4 1.1	8.5 0.7	5.9 0.5	3.6 0.2
C33	Tracheja Trachea	M Ž	9 2	0.3 0.1	0.3 0.1	0.2 0.0	0.2 0.0
C34	Bronh i pluća Bronchus & lung	M Ž	2471 755	93.9 27.2	75.5 19.6	52.5 13.8	30.3 8.4
C37	Timus Thymus	M Ž	3 3	0.1 0.1	0.1 0.1	0.1 0.1	0.1 0.1
C38	Srce, mediastinum, pleura Heart, mediastinum & pleura	M Ž	37 22	1.4 0.8	1.2 0.6	0.8 0.4	0.5 0.2
C39	Toraks, druge lokalizacije Other & ill-def. in the res. sys. & intrath. org.	M Ž	3 0	0.1 0.0	0.1 0.0	0.1 0.0	0.1 0.0
C40	Kosti i zglob. hrskavice udova Bone & articular cartilage of limbs	M Ž	12 14	0.5 0.5	0.4 0.4	0.3 0.4	0.1 0.1
C41	Kosti i zglob. hrskav., dr. lok. Bone & artic. cart. of other & unspec. parts	M Ž	23 20	0.9 0.7	0.7 0.5	0.6 0.4	0.2 0.2
C43	Koža, maligni melanom Malignant melanoma of skin	M Ž	72 68	2.7 2.4	2.3 1.9	1.7 1.3	1.1 0.9
C44	Koža, drugi mal. tumori Skin, other malignomas	M Ž	57 45	2.2 1.6	1.7 0.8	1.1 0.5	0.4 0.0
C45	Mezoteliom Mesothelioma	M Ž	9 4	0.3 0.1	0.3 0.1	0.2 0.1	0.1 0.0
C46	Kaposijev sarkom Kaposi's sarcoma	M Ž	1 1	0.0 0.0	0.1 0.0	0.0 0.0	0.1 0.0
C47	Periferni nervi i aut. ner. sis. Peripheral nerves & auton. nerv. sys.	M Ž	2 1	0.1 0.0	0.1 0.0	0.1 0.0	0.0 0.0
C48	Peritoneum i retroperitoneum Retroperitoneum & peritoneum	M Ž	31 29	1.2 1.0	0.9 0.7	0.6 0.4	0.3 0.2
C49	Vezivna i meka tkiva, drugi Other connective and soft tissue	M Ž	25 24	1.0 0.9	0.8 0.6	0.6 0.4	0.2 0.1
C50	Dojka Breast	M Ž	30 1079	1.1 38.8	0.9 27.5	0.6 19.1	0.4 11.5

Tabela 24.1 Broj umrlih i mortalitet od raka na 100.000 stanovnika prema primarnoj lokalizaciji, uzrastu i polu, centralna Srbija, 2006. godina (nastavak)

Table 24.1 Number of death cancer cases and cancer mortality rates per 100.000 population by primary site, age and sex, Central Serbia, 2006 (continued)

MKB-10 (ICD-10) Šifra (Code)	Primarna lokalizacija Primary site	POL SEX M (Male) Z (Female)	Ukupno	Sirovi mort.	Standardizovani mortalitet (Stand. mortality)		
			(All)	Crude rate	ASR(E)	ASR(W)	TRUNC
			7968	302.8	239.6	163.9	79.7
			6146	221.3	152.5	105.8	55.1
C51	Vulva Vulva	Ž	41	1.5	0.9	0.6	0.2
C52	Vagina Vagina	Ž	14	0.5	0.3	0.2	0.1
C53	Grlić materice Cervix uteri	Ž	359	12.9	10.0	7.3	5.2
C54	Materica, telo Corpus uteri	Ž	160	5.8	3.9	2.6	1.3
C55	Materica, neoznačeni deo Uterus, unspecified part	Ž	91	3.3	2.2	1.5	0.7
C56	Jajnik Ovary	Ž	296	10.7	7.9	5.7	3.6
C57	Ženski gen. org., dr. neoz. lok. Other & unspec. parts of fem. gen. org.	Ž	17	0.6	0.4	0.3	0.1
C58	Placenta Placenta	Ž	0	0.0	0.0	0.0	0.0
C60	Penis Penis	M	17	0.6	0.5	0.4	0.2
C61	Prostata Prostate	M	656	24.9	18.1	10.7	1.9
C62	Testis Testis	M	14	0.5	0.5	0.5	0.1
C63	Muški gen. org., dr. neoz. org. Other & unspec. male genital organs	M	0	0.0	0.0	0.0	0.0
C64	Bubreg Kidney, except renal pelvis	M	142	5.4	4.4	3.1	1.7
		Ž	82	3.0	1.8	1.1	0.4
C65	Bubrežna karlica Renal pelvis	M	13	0.5	0.4	0.3	0.1
		Ž	12	0.4	0.3	0.2	0.1
C66	Ureter Ureter	M	8	0.3	0.2	0.1	0.0
		Ž	6	0.2	0.1	0.1	0.0
C67	Mokraćna bešika Bladder	M	359	13.6	10.4	6.6	2.1
		Ž	104	3.7	2.2	1.4	0.4
C68	Urinarini organi, dr. neoz. org. Other & unspecified urinary organs	M	0	0.0	0.0	0.0	0.0
		Ž	2	0.1	0.0	0.0	0.0
C69	Oko, pripoji oka Eye and adnexa	M	8	0.3	0.2	0.2	0.1
		Ž	10	0.4	0.2	0.1	0.0
C70	Moždance Meninges	M	7	0.3	0.2	0.1	0.0
		Ž	24	0.9	0.6	0.4	0.2
C71	Mozak Brain	M	265	10.1	8.7	6.6	3.8
		Ž	228	8.2	6.1	4.5	2.4
C72	Centralni ner. sis., dr. delovi Spinal cord, cran. nerv. & oth. parts of CNS	M	8	0.3	0.3	0.2	0.1
		Ž	7	0.3	0.3	0.3	0.1
C73	čitasta žlezda Thyroid gland	M	19	0.7	0.6	0.4	0.2
		Ž	35	1.3	0.7	0.5	0.1
C74	Nadbubrežna žlezda Adrenal gland	M	12	0.5	0.4	0.3	0.2
		Ž	14	0.5	0.3	0.2	0.1
C75	Endokrine žlezde, druge Oth. endoc. gl. & related structures	M	4	0.2	0.1	0.1	0.0
		Ž	5	0.2	0.2	0.1	0.1
C76	Ostale lokalizacije Other & ill defined sites	M	73	2.8	2.2	1.4	0.6
		Ž	147	5.3	3.3	2.1	0.6
C77-C80	Sekundarne lok., bez ozn. lok. Unspec. mal. neo. of lymph nod. & without of spec. of site	M	274	10.4	8.1	5.6	2.5
		Ž	246	8.9	5.9	3.9	1.9
C81	Hodgkinova bolest Hodgkin's disease	M	36	1.4	1.1	0.8	0.4
		Ž	26	0.9	0.7	0.5	0.2
C82	Ne-Hodgkinov lim., folikularni Follicular non-Hodgkin's lymphoma	M	16	0.6	0.5	0.4	0.2
		Ž	9	0.3	0.3	0.2	0.2
C83	Ne-Hodgkinov lim., difuzni Diffuse non-Hodgkin's lymphoma	M	22	0.8	0.7	0.5	0.2
		Ž	29	1.0	0.8	0.6	0.3
C84	Periferni i kožni lim. T-ćelija Peripheral & cutaneous T-cell lymphomas	M	2	0.1	0.1	0.0	0.0
		Ž	2	0.1	0.0	0.0	0.0
C85	Ne-Hodgkinovi limfomi, drugi Oth. & unspec. types of non-Hodgkin's lymphoma	M	73	2.8	2.3	1.7	0.7
		Ž	48	1.7	1.2	0.8	0.4
C88	Zloćudne imunoprolifer. bolesti Malignant immunoproliferative diseases	M	3	0.1	0.1	0.1	0.1
		Ž	1	0.0	0.0	0.0	0.0
C90	Mult. mijelom i zloć. tum. plaz. ćel. Multiple myeloma and malignant plasma cell neoplasms	M	60	2.3	1.9	1.4	0.9
		Ž	56	2.0	1.4	1.0	0.6
C91	Limfoidna leukemija Lymphoblastic, lymphoid leukaemia	M	87	3.3	2.6	1.7	0.6
		Ž	61	2.2	1.6	1.2	0.4
C92	Mijeloidna leukemija Myeloid leukaemia	M	83	3.2	2.5	1.9	0.9
		Ž	93	3.3	2.5	1.9	1.0
C93	Monocitna leukemija Monocytic leukaemia	M	8	0.3	0.3	0.2	0.0
		Ž	4	0.1	0.1	0.1	0.1
C94	Leukemije, druge Other leukaemias of specified cells	M	6	0.2	0.2	0.1	0.0
		Ž	6	0.2	0.2	0.1	0.0
C95	Leukemije, neoznačene Leukaemia, unspecified cell type	M	21	0.8	0.6	0.4	0.1
		Ž	17	0.6	0.4	0.3	0.1
C96	Dr. zloć. tum. hematop. sist. Oth. & unspec. mal. neo. of lymph., haematopoietic & related tissu	M	0	0.0	0.0	0.0	0.0
		Ž	3	0.1	0.1	0.0	0.0
C00-C96 (C44)	Sve lokalizacije, bez kože All sites but skin	M	7911	300.7	237.9	162.8	79.3
		Ž	6101	219.6	151.6	105.3	55.1