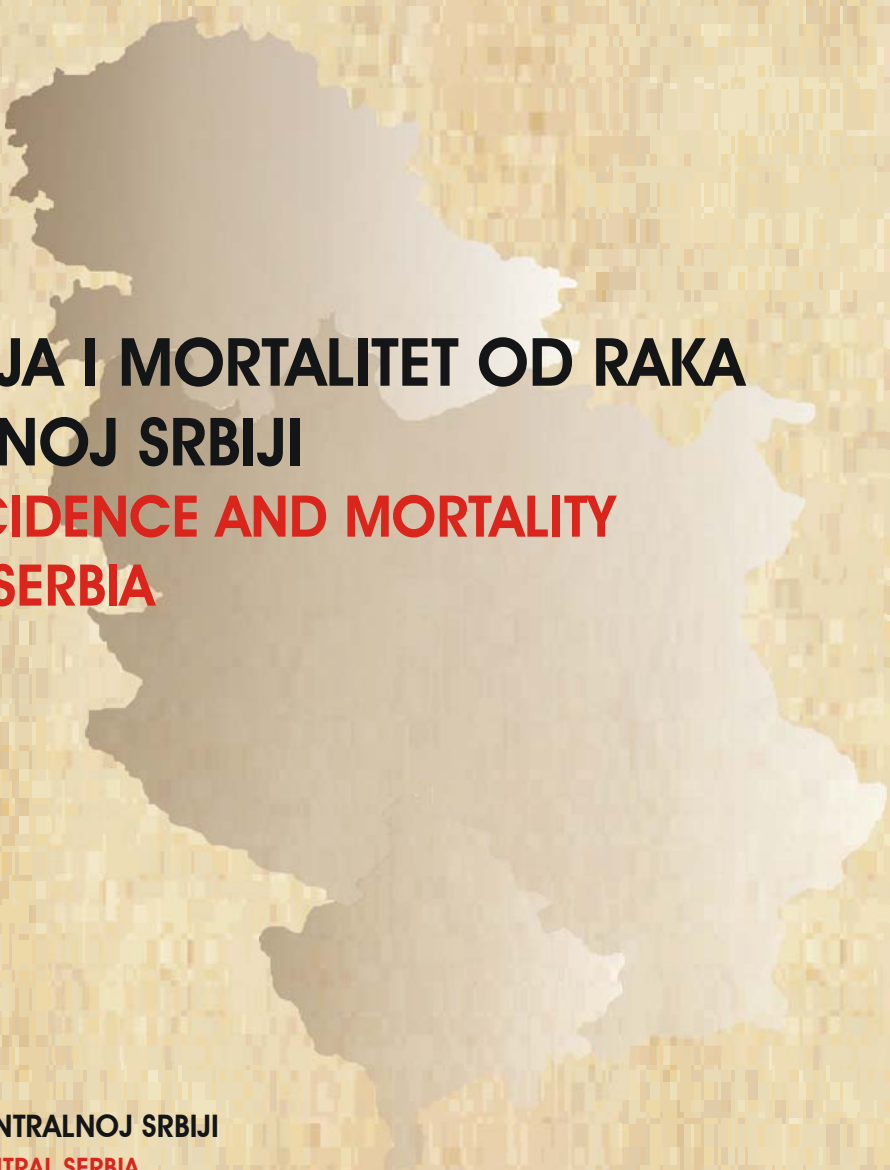


Institut za zaštitu zdravlja Srbije "Dr Milan Jovanović - Batut"

Institute of Public Health of Serbia " Dr Milan Jovanović - Batut"

Centar za prevenciju i kontrolu nezaraznih oboljenja

Center for prevention and control of noncommunicable diseases



**INCIDENCIJA I MORTALITET OD RAKA  
U CENTRALNOJ SRBIJI**  
**CANCER INCIDENCE AND MORTALITY  
IN CENTRAL SERBIA**  
**2009**

REGISTAR ZA RAK U CENTRALNOJ SRBIJI

CANCER REGISTRY OF CENTRAL SERBIA



ISBN 86-7358-030-7

IZVEŠTAJ BR.11

REPORT No.11

Beograd, 2011.

**Institut za javno zdravlje Srbije "Dr Milan Jovanović - Batut"**  
**Institute of Public Health of Serbia " Dr Milan Jovanović - Batut"**

**Odeljenje za prevenciju i kontrolu nezaraznih bolesti**  
**Department for Prevention and Control of Noncommunicable Diseases**



# **INCIDENCIJA I MORTALITET OD RAKA U CENTRALNOJ SRBIJI**

**CANCER INCIDENCE AND MORTALITY  
IN CENTRAL SERBIA**

# **2009**

**REGISTAR ZA RAK U CENTRALNOJ SRBIJI**  
**CANCER REGISTRY OF CENTRAL SERBIA**



**ISBN 86-7358-030-7**

**IZVEŠTAJ BR. 11**  
**REPORT No. 11**

**Beograd, 2011.**

**Izdavač**

Institut za javno zdravlje Srbije "Dr Milan Jovanović - Batut"

**Published by**

*Institute of Public Health of Serbia " Dr Milan Jovanović - Batut"*

**Direktor****Director**

Prim. dr sc. Tanja Knežević / *Tanja Knezevic, MD, PhD*

**Odeljenje za prevenciju i kontrolu nezaraznih bolesti****Department for Prevention and Control of Noncommunicable Diseases**

Mr sc. dr Dragan Miljuš / *Dragan Miljus, MD, M. Sc. - Head of Department*

Dr Snežana Živković / *Snezana Zivkovic, MD*

Dr Snežana Plavšić / *Snezana Plavsic, MD*

Mr sc. med. Nataša Mickovski Katalina / *Natasa Mickovski Katalina, MD, M.Sc.*

Dr Ivana Rakočević / *Ivana Rakocevic, MD*

Dr Jelena Janković / *Jelena Jankovic MD*

Zorica Božić, viši dijetetski nutricionista / *Zorica Bozic, senior dietitian nutritionist*

Sanja Savković, inženjer statistike / *Sanja Savkovic, statistics engineer*

**Uređivački odbor****Editorial Board**

Mr sc. dr Dragan Miljuš / *Dragan Miljus, MD, M. Sc.*

Dr Snežana Živković / *Snezana Zivkovic, MD*

Zorica Božić, viši dijetetski nutricionista / *Zorica Bozic, senior dietitian nutritionist*

**Dizajn i priprema za štampu****Design and typesetting**

Mr sc. dr Dragan Miljuš / *Dragan Miljus, MD, M. Sc.*

Dr Snežana Živković / *Snezana Zivkovic, MD*

Zorica Božić, viši dijetetski nutricionista / *Zorica Bozic, senior dietitian nutritionist*

Sanja Savković, inženjer statistike / *Sanja Savkovic, statistics engineer*

**Informatička podrška / IT support**

*CanReg 4 – Descriptive Epidemiology, Internacional Agenci for Research on Cancer,WHO*

**Lektor****Language editor**

Mr Tamara Gruden / *Mr Tamara Gruden*

**Korespondencija****Correspondence to**

Mr sc. dr Dragan Miljuš / *Dragan Miljus, MD, M. Sc.*

Dr Snežana Živković / *Snezana Zivkovic, MD*

Institut za javno zdravlje Srbije

Dr Subotića 5, 11 000 Beograd, Srbija

Tel: +381 (011) 2684 566/160, 115

Fax: +381 (011) 2684 140

E-mail: [nezaraznibatut@yahoo.com](mailto:nezaraznibatut@yahoo.com)

Web site://[www.batut.org.rs](http://www.batut.org.rs)

# SADRŽAJ / CONTENTS

## Uvod i objašnjenja

### *Introduction and Comments*

## Tabele i slike / *Tables and Figures*

1. Broj stanovnika prema uzrastu i polu, centralna Srbija, 2009. godina  
*Population of Central Serbia by age and sex, 2009*
2. Broj stanovnika prema okruzima i polu, centralna Srbiji, 2009. godina  
*Population of Central Serbia by administrative regions by sex, 2009*
3. Stanovništvo prema uzrastu i polu, centralna Srbija, popis 2002. i 2009. godine  
*Population of Central Serbia by age sex, census 2002 and estimate 2009*
4. Broj novoobolelih osoba od raka prema polu, centralna Srbija, 1990 - 2008.  
*Number of new cancer cases by sex, Central Serbia, 1990 - 2009*
5. Broj umrlih osoba od raka prema polu, centralna Srbija, 1990 - 2008.  
*Number of death cancer cases by sex, Central Serbia, 1990 - 2009*
6. Standardizovana incidencija i mortalitet od raka na 100.000 stanovnika, centralna Srbija, 1990 – 2009 godina  
*Standardized cancer incidence and mortality rates per 100.000 population, Central Serbia, 1990 – 2009*
7. Standardizovane stope mortaliteta od vodećih lokalizacija raka na 100.000 stanovnika, muškarci, centralna Srbija, 1990 – 2009 god.  
*Standardized cancer mortality rates per 100.000 population, males, Central Serbia, 1990 - 2009*
8. Standardizovane stope mortaliteta od vodećih lokalizacija raka na 100.000 stanovnika, žene, centralna Srbija, 1990 – 2009 god.  
*Standardized cancer mortality rates per 100.000 population, females, Central Serbia, 1990 -2009*
9. Vodeće lokalizacije u obolevanju od raka prema polu, centralna Srbija, 2009 godina  
*The leading cancer sites by sex, Central Serbia, 2009*
10. Vodeće lokalizacije u umiranju od raka prema polu, centralna Srbija, 2009 godina  
*Deaths for leading cancer sites by sex, Central Serbia, 2009*
11. Broj novoobolelih slučajeva od raka prema vodećim lokalizacijama, okruzima i polu, centralna Srbija, 2009 godina  
*Number of new cancer cases by sex and leading primary sites, Central Serbia, 2009*
12. Sirove stope incidencije od raka prema vodećim lokalizacijama, okruzima i polu, centralna Srbija, 2009 godina  
*Crude cancer incidence rates by sex and leading primary sites, Central Serbia, 2009*

13. Standardizovane stope incidencije od raka prema vodećim lokalizacijama okruzima i polu, centralna Srbija, 2009 godina  
*Standardized cancer incidence rates by sex and leading primary sites, Central Serbia, 2009*
14. Broj umrlih slučajeva od raka prema prema vodećim lokalizacijama, okruzima i polu, centralna Srbija, 2009 godina  
*Number of death cancer cases by sex and leading primary sites, Central Serbia, 2009*
15. Sirove stope mortaliteta od raka prema vodećim lokalizacijama, okruzima i polu, centralna Srbija, 2009 godina  
*Crude cancer mortality rates by sex and leading primary sites, Central Serbia, 2009*
16. Standardizovane stope mortaliteta od raka prema vodećim lokalizacijama, okruzima i polu, centralna Srbija, 2009 godina  
*Standardized cancer mortality rates by sex and leading primary sites, Central Serbia, 2009*
17. Ukupan broj novoobolelih i broj novoobolelih od raka sa procentom registrovanih samo na osnovu prijave smrti, prema primarnoj lokalizaciji i polu, centralna Srbija, 2009 godina  
*Total number of new cancer cases and number and percentage of cases registered from death certificates only, of corpus uteri, Central Serbia, 2009*
18. Broj novoobolelih slučajeva od raka, prema primarnoj lokalizaciji, uzrastu i polu, centralna Srbija, 2009 godina  
*Number of new cancer cases by primary site, age and sex, Central Serbia, 2009*
19. Sirove i standardizovane stope incidencije od raka na 100 000 stanovnika, prema primarnoj lokalizaciji, uzrastu i polu, centralna Srbija, 2009 godina  
*Crude and standardized cancer incidence rates per 100 000 population by primary site, age and sex, Central Serbia, 2009*
20. Broj umrlih slučajeva od raka, prema primarnoj lokalizaciji, uzrastu i polu, centralna Srbija, 2009 godina  
*Number of death cancer cases by primary site, age and sex, Central Serbia, 2009*
21. Sirove i standardizovane stope mortaliteta od raka na 100 000 stanovnika, prema primarnoj lokalizaciji, uzrastu i polu, centralna Srbija, 2009 godina  
*Crude and standardized cancer mortality rates per 100 000 population by primary site, age and sex, Central Serbia, 2009*
22. Ukupan broj novoobolelih, broj i procenat histološki i citološki verifikovanih slučajeva raka prema primarnoj lokalizaciji i polu, centralna Srbija, 2009 godina  
*Total number of new cancer cases, number and percentage of histologically and cytologically confirmed cancer cases, by primary site and sex, Central Serbia, 2009*

23. Broj novoobolelih i incidencija od raka prema primarnoj lokalizaciji, uzrastu i polu, centralna Srbija, 2009 godina  
*Number of new cancer cases and cancer incidence rates by primary site, age and sex, Central Serbia, 2009*
24. Broj umrlih i mortalitet od raka prema primarnoj lokalizaciji, uzrastu i polu, centralna Srbija, 2009 godina  
*Number of death cancer cases and cancer mortality rates by primary site, age and sex, Central Serbia, 2009*

## UVOD

Populacioni registar za rak osnovan je u Srbiji 1970. godine na osnovu Plana statističkih istraživanja od interesa za Republiku (Sl. glasnik SRS br. 32/69).

U cilju primene jedinstvene metodologije u vođenju Registra u svim teritorijalnim jedinicama bivše Jugoslavije, 1986. godine doneti su Uputstvo o načinu i postupku prijavljivanja lica obolelih od malignih neoplazmi (Sl. list SFRJ, br. 3/86) i Pravilnik o obrascu Registra i načinu njegovog vođenja, obrascu prijave i postupku prijavljivanja i odjavljivanja određenih bolesti (Sl. glasnik SRS, br. 42/86).

Neprecizno uputstvo, nedovoljna edukacija zdravstvenih radnika, kao i nedostatak informatičke podrške imali su za posledicu subregistraciju novootkrivenih slučajeva raka, kao i relativno loš kvalitet podataka na samoj prijavi. U periodu od 1986. do 1995. godine, broj obolelih slučajeva malignih tumora koji su prijavljeni Registru bio je približno isti ili čak i manji od broja umrlih od raka.

Polazeći od zakonske obaveze i uloge Registra (pre svega, za procenu opterećenosti društva rakom, donošenje programa primarne prevencije, planiranje onkološke zdravstvene zaštite, kao i za klinička i epidemioloških istraživanja), u toku 1996. godine pristupljeno je njegovoj reorganizaciji u skladu sa preporukama Internacionalne (International Agency for Research on Cancer - IACR) i Evropske (European Network of Cancer Registries - ENCR) asocijacije registara za rak.

Reorganizacija je obuhvatala:

- decentralizaciju (registri se vode na nivou okruga, a baza podataka za centralnu Srbiju se nalazi u Institutu za javno zdravlje Srbije),
- pored pasivnog i aktivni način prikupljanja podataka,
- nove izvore informacija,
- edukaciju zdravstvenih radnika,
- informatičku podršku i
- povratni sistem informacija.

Zahvaljujući uspešnoj reorganizaciji, u toku 1998. godine Registar za rak u centralnoj Srbiji je primljen u Internacionalnu (IACR) i Evropsku asocijaciju registara za rak (ENCR).

Posle navedenih aktivnosti i vremenskog perioda od nekoliko godina, koji je neophodan za stabilnost podataka, ostvareni su uslovi za izradu prvog izveštaja u decembru 2002. godine.

U registrima koji funkcionišu više decenija, zbog mnogobrojnih izvora podataka i potrebe za njihovom proverom i analizom, uobičajeni vremenski period za prikupljanje podataka iznosi dve godine posle čega se publikuje izveštaj.

## **INTRODUCTION**

The Population Register for Cancer was formed in Serbia in 1970, originated from the Plan of Statistical Research of Interest for the Republic (Official Gazette of the Republic of Serbia No. 32/69).

In 1986, aiming to apply a unified Register implementation methodology in all territorial units of Former Yugoslavia, the Guidelines On Ways And Procedures Of Reporting Persons With Malign Neoplasms (Official Gazette SFRY, No. 3/86) and the Regulation Book For The Register Form And The Method Of Updating, The Report Forms And Reporting And Cancelation Procedures For Certain Diseases (Official Gazette of the Republic of Serbia No. 42/86) were adopted.

Unprecise Guidelines, insufficient education of the medical personnel, as well as the lack of informatics support resulted in the subregistration of newly found cases of cancer, as well as a relatively poor quality of data on the report forms themselves. In the period of 1986 - 1995, the number of cases with malignant tumors reported to the Register was approximately the same or even lower compared to the number of cases deceased from cancer.

Starting from legal obligations and role of the Register, (foremost for the evaluation of the cancer burden on society, adoption of primary prevention programs, planning oncology health care, as well as clinical and epidemiological research), the reorganization of the Register began in 1996, in accordance with the recommendations of the Interational Agency for Research on Cancer - IACR, and European Network of Cancer Registries - ENCR.

The reorganization encompassed:

- Decentralization (registers are formed on the level of regions, while the main database for Central Serbia is located in the Institute of Public Health of Serbia),
- Apart from passive, active data collection,
- New sources of information,
- Education of medical personnel,
- Informatics support and
- Feedback system of information.

During 1998, due to a successful reorganization, the Cancer Register in Central Serbia was admitted into the Interational Agency for Research on Cancer (IACR) and European Network of Cancer Registries (ENCR).

Following the afore-mentioned activities and several years period necessary for achieving stability of the data, conditions were created for issuing the first Report in December 2002.

In Registers functioning over a period of several decades, due to numerous data sources and the need to check and analyze them, the usual time span for data collection is two years, after which the Report is published.



## **METOD**

Registar za rak u centralnoj Srbiji obuhvata podatke o: ličnim karakteristikama obolelih/umrlih, mogućoj pojavi multiplog primarnog tumora, datumu utvrđivanja sadašnjeg oboljenja, načinu dijagnostike, karakteristikama tumora (primarna i sekundarna anatomska lokalizacija, histološki tip, stadijum), ishodu bolesti, kao i podatke o zdravstvenoj ustanovi koja je prijavila maligni tumor.

Izvori informacija o obolelim/umrlim od raka su podaci iz instituta za onkologiju, onkoloških dispanzera, onkoloških klinika, bolničkih i vanbolničkih zdravstvenih ustanova, patohistoloških/citoloških, hematoloških i drugih laboratorija, prijava smrti, fondova zdravstvenog osiguranja i ciljanih istraživanja.

Informatičku podršku Registru pružio je programski paket CanReg4 (Department of Descriptive Epidemiology, IARC, Lyon, France, 2002).

U cilju obezbeđenja kvalitetnog prikupljanja, unosa, čuvanja, obrade i analize podataka u Registru, primenjena je metodologija međunarodnih asocijacija (IARC i ENCR) registara za rak.

Za analizu umiranja od malignih tumora u centralnoj Srbiji u 2008 godini, korišćeni su nepublikovani podaci Republičkog zavoda za statistiku. Izvor podataka o populaciji bila je procena stanovništva za 2009 godinu Republičkog zavoda za statistiku.

Maligni tumori su šifrirani prema Međunarodnoj klasifikaciji bolesti - deseta revizija, knjiga 1- (šifre C00-C96) i prema Međunarodnoj klasifikaciji onkoloških bolesti - drugo izdanje (šifre 8000/3-9941/3) - International Classification of Diseases for Oncology - Third Edition, World Health Organization, 2000, Geneva. Registrom nisu obuhvaćeni tumori "in situ" (šifre D00-D09).

U izveštaju pored nestandardizovanih, prikazane su i standardizovane stope incidencije (tabele 6, 13, 19, 23) i mortaliteta (tabele 7, 16, 21, 24). Navedene stope standardizovane su metodom direktne standardizacije, a kao standardna populacija korišćena je populacija sveta (ASR-W), Evrope (ASR-E) i trunkova (ASR-TRUNC).

Učešće prijavljenih slučajeva malignih tumora koji su registrovani samo na osnovu prijave smrti (tabela 17).

## **METHOD**

The Central Serbia Cancer Register includes the following data: personal characteristics of new cases/deceased, possible appearance of multiple primary tumors, date of determination of current illness, diagnostic methods, tumor characteristics (primary and secondary anatomy localization, histology type, stage), outcome of the disease, as well as data on the health institution reporting the malign tumor.

Information sources concerning new cancer cases/deceased cases are data from the oncology institutes, oncology dispensaries, oncology clinics, hospitals and out-patients health institutions, pathology/cytology, hematology and other laboratories, death reports, health insurance funds and targeted research.

The Register is informatically supported by the CanReg4 program package (Department of Descriptive Epidemiology, IARC, Lyon, France, 2002).

With the aim of providing quality in collection, entry, keeping, processing and analysis of data in the Register, the methodology of international associations was applied (IARC I ENCR) for cancer registers.

Unpublished data of the Republic Statistics Institute were used for the analysis of death due to malign tumors in Central Serbia in 2009.

The source of data concerning the population was the 2008 estimate of the Republic Statistics Institute.

Malign tumors are coded according to the International Classification of Diseases - Tenth Revision, Volume 1 (codes C00-C96) and according to the International Classification of Diseases for Oncology - Third Edition (codes 8000/3-9941/3), World Health Organization, 2000, Geneva. The Register does not include tumors "in situ" (codes D00-D09).

Apart from crude rates, the Report includes standardized incidence rates (tables 6, 13, 19, 23) and mortality rates (tables 7, 16, 21, 24). These rates were standardized by the method of direct standardization, with the World (ASR-W), European (ASR-E) or truncated (ASR-TRUNC) population as the standard population.

The percentage of new malign tumor cases registered only on the basis of death reports (table 17).

## **DEFINICIJE**

Incidencija je broj novodijagnostikovanih slučajeva raka u definisanoj populaciji, prijavljenih registru u datoj kalendarskoj godini.

Uzrasno specifična stopa incidencije je broj novoobolelih od raka u definisanoj uzrasnoj grupi (najčešće petogodišnji interval) na 100.000 stanovnika te uzrasne grupe.

Mortalitet je broj slučajeva umrlih od raka koji se javljaju u definisanoj populaciji tokom određenog vremenskog perioda.

Uzrasno specifična stopa mortaliteta je broj umrlih od raka u definisanoj uzrasnoj grupi (najčešće petogodišnji interval) na 100.000 stanovnika te uzrasne grupe.

Standardizovane stope incidencije i mortaliteta predstavljaju fiktivne vrednosti koje se dobijaju određenim tehničkim postupkom, uvođenjem standardne populacije, obično je to: populacija sveta (ASR-W), Evrope (ASR-E) ili tranka (ASR-TRUNC). Njima se prevazilaze razlike (najčešće po polu i uzrastu) koje postoje u različitim populacijama, tako da su pogodne za poređenja.

## **DEFINITIONS**

Incidence is the number of newly diagnosed cancer cases in a defined population, reported to the Register in the given calendar year.

The age-specific incidence rate is the number of new cancer cases in a defined age-group (usually five-year interval) per 100 000 population of that age group.

Mortality is the number of cases deceased from cancer appearing in a defined population during a determined period of time.

The age-specific mortality rate is the number of deceased from cancer in a defined age-group (usually five-year interval) per 100 000 population of that age group.

Standardized incidence and mortality rates represent fictive values reached by a certain technique, introducing standard population: usually World (ASR-W), European (ASR-E) or truncated population (ASR-TRUNC). They are used to eliminate differences (mostly gender and age) existing in different populations and are, therefore, convenient for comparison.

***U realizaciji ovog izveštaja učestvovali su zdravstveni radnici i saradnici:***

- ***Instituta za javno zdravlje u Nišu i Kragujevcu;***
- ***Zavoda za javno zdravlje na teritoriji centralne Srbije;***
- ***Hospitalnog Registra za rak Instituta za onkologiju i radiologiju Srbije;***
- ***Instituta kliničkog centra Srbije i kliničkog centra u Nišu;***
- ***Kliničko bolničkih centara u Beogradu i Kragujevcu;***
- ***Instituta za zdravstvenu zaštitu majke i deteta "Dr Vukan Čupić";***
- ***Univerzitetske dečije klinike u Beogradu;***
- ***Ginekološko akušerske klinike "Narodni front";***
- ***Zdravstvenih centara;***
- ***Specijalnih / opštih bolnica, i***
- ***Domova zdravlja na teritoriji centralne Srbije.***

***Health experts and administrative staff from the following institutions participated in the realization of this Report:***

- ***Institutes of Public Health of Nis and Kragujevac;***
- ***Institutes of Public Health on the territory of Central Serbia;***
- ***Hospital Cancer Register of the Oncology and Radiology Institute of Serbia;***
- ***Institutes of the Clinical Centre of Serbia and the Clinical Centre of Nis;***
- ***Clinical-Hospital Centres in Belgrade and Kragujevac;***
- ***Institute for Health Care of Mother and Child "Dr Vukan Čupić";***
- ***University Childrens' Clinic in Belgrade;***
- ***Gyneacology and Obstretics Clinic "Narodni front";***
- ***Health Centres;***
- ***Special / General Hospitals and***
- ***Primary Health Centres on the territory of Central Serbia.***

## **Koordinatori okružnih Registara za rak / *Coordinators of Cancer Registries:***

### **Zavod za javno zdravlje Šabac / *Institute of Public Health Sabac***

Dr Olivera Stojanović, specijalista socijalne medicine / *Olivera Stojanovic, MD, specialist specialist in social medicine*

Vesna Maksimović, viši sanitarni tehničar / *Vesna Maksimovic, senior sanitary technician*

### **Zavod za javno zdravlje Valjevo / *Institute of Public Health Valjevo***

Marija Jovanović, medicinska sestra / *Marija Jovanovic, nurse*

### **Zavod za javno zdravlje Požarevac / *Institute of Public Health Pozarevac***

Dr Goran Nikolić, specijalista epidemiologije / *Goran Nikolic, MD, specialist in epidemiology*

Srdan Klimek, viši sanitarni tehničar / *Srdjan Klimek, senior sanitary technician*

### **Institut za javno zdravlje Kragujevac / *Institute of Public Health Kragujevac***

Prof. dr Vesna Pantović, specijalista epidemiologije / *Prof. Vesna Pantovic, MD, PhD, specialist in epidemiology*

Ass. dr Gordana Đorđević, specijalista epidemiologije / *Ass. Prof. Gordana Djordjevic, MD, PhD, specialist in epidemiology*

Jelena Hadžić - Radisavljević, viši sanitarni tehničar / *Jelena Hadzic - Radisavljevic, senior sanitary technician*

### **Zavod za javno zdravlje Čuprija / *Institute of Public Health Cuprija***

Dr Vesna Stefanović, specijalista epidemiolog / *Vesna Stefanovic, MD, specialist in epidemiology*

Sonja Anđelković, viši sanitarni tehničar / *Sonja Anđelkovic, senior sanitary technician*

### **Zavod za javno zdravlje Zaječar / *Institute of Public Health Zajecar***

Dr Svetlana Živković, specijalista epidemiolog / *Svetlana Zivkovic, MD, specialist in epidemiology*

Nena Đorđević, operater / *Nena Đorđevic, IT technician*

### **Zavod za javno zdravlje Užice / *Institute of Public Health Uzice***

Dr sc med Biljana Mijović / *Biljana Mijović MD, PhD, specialist in epidemiology*

Dr Aleksandra Andrić, specijalista epidemiolog / *Aleksandra Andric, MD, specialist in epidemiology*

Marija Dulović, sanitarni tehničar / *Marija Dulovic, sanitary technician*

### **Zavod za javno zdravlje Čačak / *Institute of Public Health Cacak***

Dr Aksentije Tošić, specijalista epidemiolog / *Aksentije Tosic, MD, specialist in epidemiology*

Radoica Gojgić, dipl. inženjer metalurgije / *Radoica Gojgic, dipl. engineer of metallurgy*

### **Zavod za javno zdravlje Kraljevo / *Institute of Public Health Kraljevo***

Dr Vladan Šaponjić, specijalista epidemiolog / *Vladan Saponjic, MD, specialist in epidemiology*

Dr Verica Đukić, specijalista epidemiolog / *Verica Djukic, MD, specialist in epidemiology*

Zvonko Marinković, viši sanitarni tehničar / *Zvonko Marinkovic, senior sanitary technician*

**Zavod za javno zdravlje Kruševac / *Institute of Public Health Krusevac***

Dr Mirjana Avramović, specijalista epidemiolog / *Mirjana Avramovic, MD, specialist in epidemiology*

Verica Mijailović, viši sanitarni tehničar / *Verica Mijailovic, senior sanitary technician*

**Insitut za javno zdravlje Niš / *Institute of Public Health Nis***

Dr Mirko Ilić, specijalista epidemiolog / *Mirko Ilic, MD, specialist in epidemiology*

**Zavod za javno zdravlje Pirot / *Institute of Public Health Pirot***

Dr Radmila Zec, specijalista epidemiolog / *Radmila Zec, MD, specialist in epidemiology*

Sonja Petrov, viši sanitarni tehničar / *Sonja Petrov, senior sanitary technician*

**Zavod za javno zdravlje Leskovac / *Institute of Public Health Leskovac***

Prim. dr sc. med. Miroslava Dimitrijević, specijalista socijalne medicine / *Prim. Miroslava Dimitrijevic, MD, PhD, specialist in social medicine*

Rosica Pejčić, viši sanitarni tehničar / *Rosica Pejccic, senior sanitary technician*

**Zavod za javno zdravlje Vranje / *Institute of Public Health Vranje***

Dr Svetlana Stojanović, specijalista socijalne medicine / *Svetlana Stojadinovic, MD, specialist in social medicine*

Petar Veličković, zdravstveni statističar / *Petar Velickovic, health statistician*

**Gradski zavod za javno zdravlje Beograd / *Institute of Public Health Beograd***

Mr sc. med. Ljubinka Marčetić, specijalista socijalne medicine / *Ljubinka Marcetic, MD, M. Sc. specialist in social medicine*

Dr Svetlana Trtica, specijalista socijalne medicine / *Svetlana Trtica, MD, specialist in social medicine*

Aleksandra Čukić, zdravstveni statističar / *Aleksandra Cukic, health statistician*

Tabela 1. Broj stanovnika prema uzrastu i polu, centralna Srbija, 2009\*. godina  
 Table 1. Population of Central Serbia by age and sex, 2009\*

Uzrast Age	Muškarci Males	Žene Females	Ukupno Total
0-4	133422	125145	258567
5-9	142496	134997	277493
10-14	142808	135682	278490
15-19	158237	150988	309225
20-24	176609	169886	346495
25-29	188027	184299	372326
30-34	189465	188095	377560
35-39	177250	179107	356357
40-44	169007	174599	343606
45-49	177222	185218	362440
50-54	194124	203485	397609
55-59	206678	220059	426737
60-64	145786	163833	309619
65-69	118645	141829	260474
70-74	117608	149873	267481
75+	165430	242542	407972
<b>Ukupno (Total)</b>	<b>2602814</b>	<b>2749637</b>	<b>5352451</b>

Tabela 2. Broj stanovnika prema okruzima i polu, centralna Srbija, 2009\*. godina  
 Table 2. Population of Central Serbia by administrative districts by sex, 2009\*

Teritorija District	Muškarci Males	Žene Females	Ukupno Total
Grad Beograd	769468	861114	1630582
Kolubarski	88893	91400	180293
Mačvanski	153988	156851	310839
Raški	147429	151726	299155
Moravički	105842	109580	215422
Zlatiborski	146802	150056	296858
Rasinski	119530	124711	244241
Šumadijski	141380	148116	289496
Pomoravski	104571	111615	216186
Braničevski	91457	98099	189556
Podunavski	100010	103108	203118
Zaječarski	60372	64051	124423
Borski	64814	67650	132464
Nišavski	184081	189936	374017
Pčinjski	114397	113857	228254
Jablanički	113563	113553	227116
Toplički	47672	46898	94570
Pirotski	48545	47316	95861
<b>Centralna Srbija (Central Serbia)</b>	<b>2602814</b>	<b>2749637</b>	<b>5352451</b>

Slika 1. Stanovništvo prema uzrastu i polu, centralna Srbija, 2002† i 2009\*. godina  
 Figure 1. Population of Central Serbia by age and sex, 2002† and 2009\*

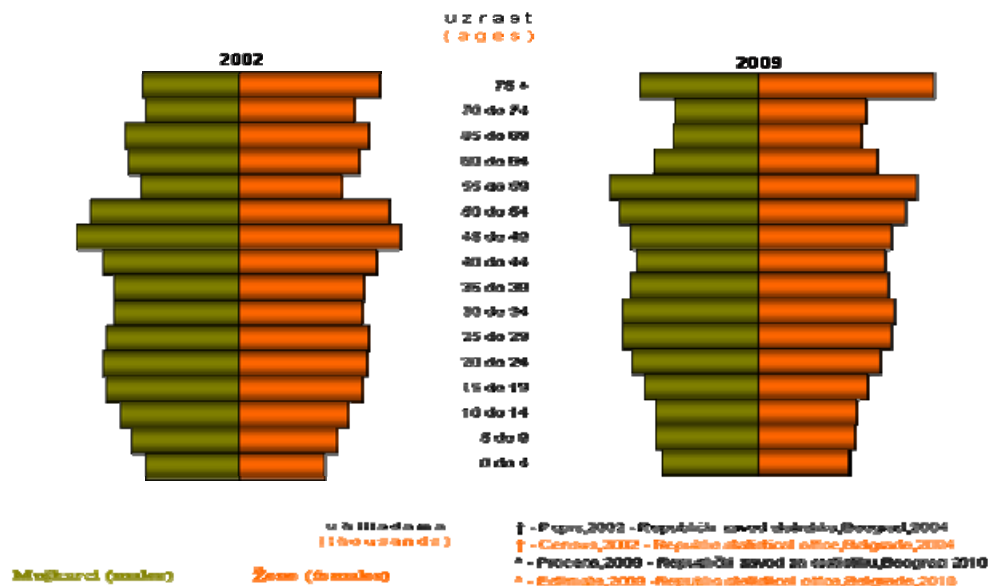


Tabela 3. Broj novoobolelih osoba od raka prema polu, centralna Srbija, 1990 - 2009. godina  
 Table 3. Number of new cancer cases by sex, Central Serbia, 1990 - 2009

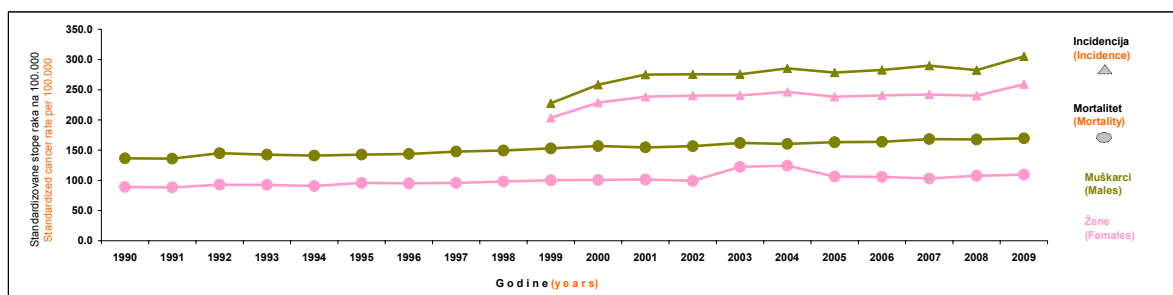
Pol (Sex)	Godine (Years)																			
	1990*	1991*	1992*	1993*	1994*	1995*	1996*	1997*	1998*	1999	2000	2001	2002	2003	2004	2005	2006	2007	2008	2009
Muškarci (Males)	4879	4479	4417	2900	2639	3101	8987	9412	9788	9964	11270	12110	12449	12350	12801	12679	12835	13475	13261	14012
Žene (Females)	5019	4696	4174	3354	3250	3955	8236	8562	9053	9661	10853	11249	11449	11594	11954	11690	11758	12187	11974	12651
Ukupno (Total)	9898	9175	8591	6254	5889	7056	17223	17974	18841	19625	22123	23359	23898	23944	24755	24369	24593	25662	25235	26663

\* subregistracija (subregistration)

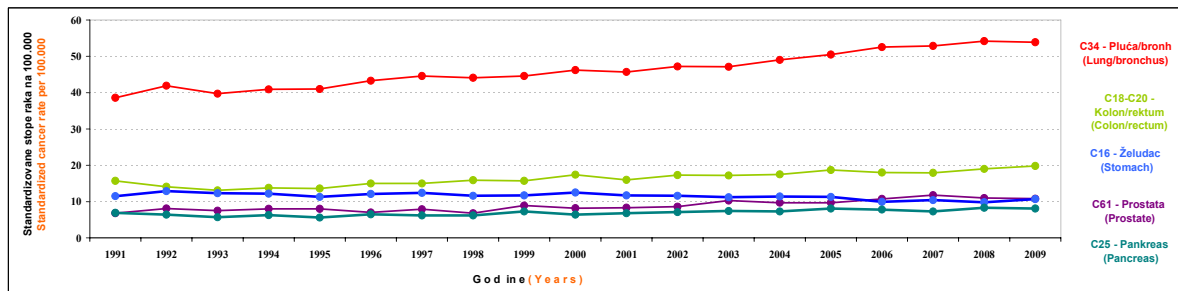
Tabela 4. Broj umrlih osoba od raka prema polu, centralna Srbija, 1990 - 2009. godina  
 Table 4. Number of death cancer cases by sex, Central Serbia, 1990 - 2009

Pol (Sex)	Godine (Years)																			
	1990	1991	1992	1993	1994	1995	1996	1997	1998	1999	2000	2001	2002	2003	2004	2005	2006	2007	2008	2009
Muškarci (Males)	5612	5658	6083	6093	6146	6287	6488	6736	6874	6962	7206	7149	7496	7655	7728	7858	7968	8290	8338	8506
Žene (Females)	4202	4303	4544	4581	4569	4907	4919	5052	5288	5350	5447	5553	5571	5832	5980	6142	6146	6083	6317	6536
Ukupno (Total)	9814	9961	10627	10674	10715	11194	11407	11788	12162	12312	12653	12702	13067	13487	13708	14000	14114	14373	14655	15042

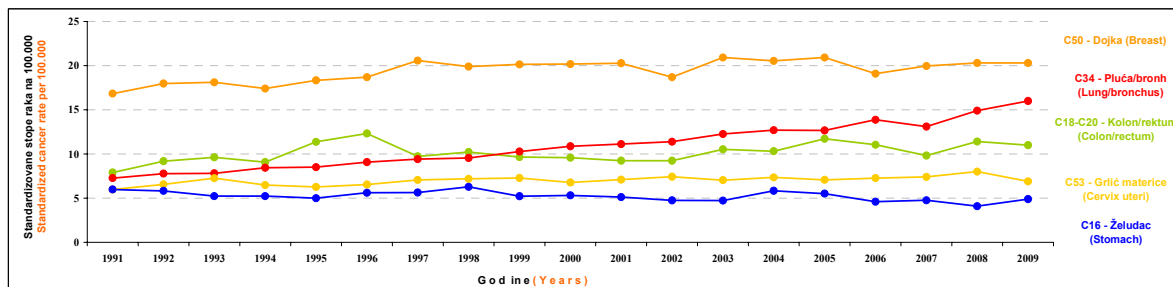
Slika 2. Standardizovana incidencija i mortalitet od raka na 100.000 stanovnika, centralna Srbija, 1990 - 2009. godina  
 Figure 2. Standardized cancer incidence and mortality rates per 100.000 population, Central Serbia, 1990 - 2009



Slika 3. Standardizovane stope mortaliteta od vodećih lokalizacija raka na 100.000 stanovnika, muškarci, centralna Srbija, 1990-2009. god.  
 Figure 3. Standardized cancer mortality rates per 100.000 population, males, Central Serbia, 1990 - 2009

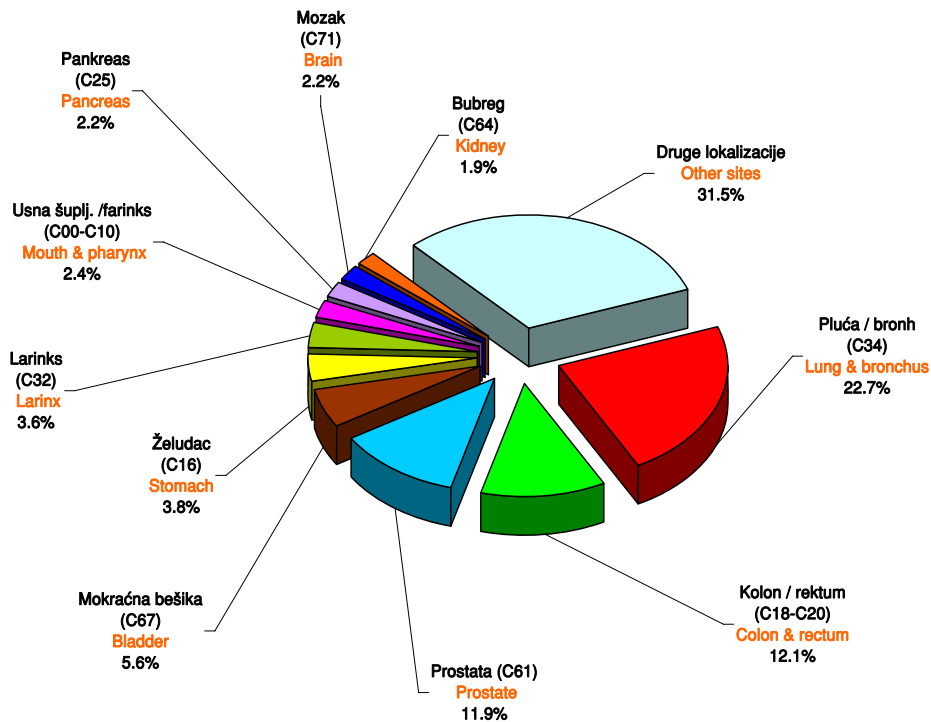


Slika 4. Standardizovane stope mortaliteta od vodećih lokalizacija raka na 100.000 stanovnika, žene, centralna Srbija, 1990 - 2009. god.  
 Figure 4. Standardized cancer mortality rates per 100.000 population, females, Central Serbia, 1990 - 2009

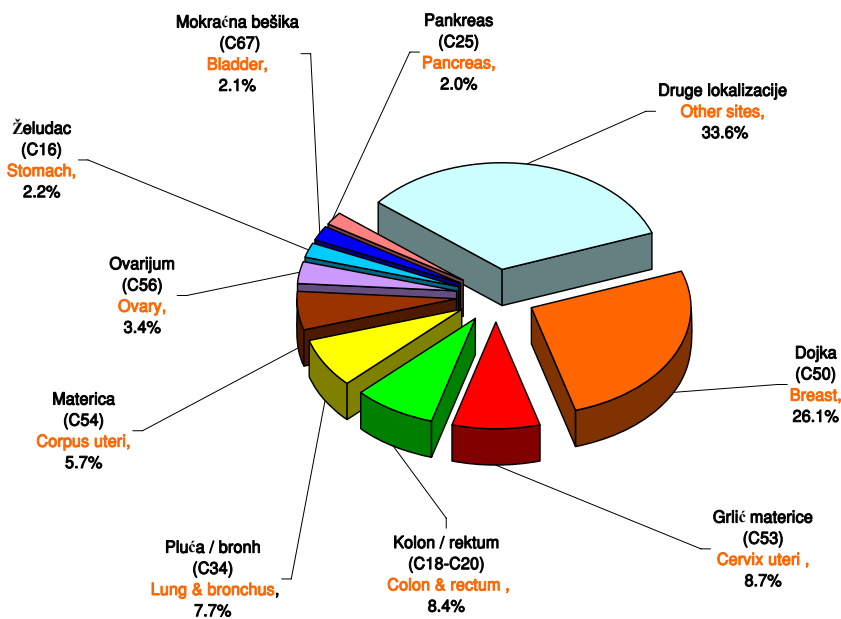




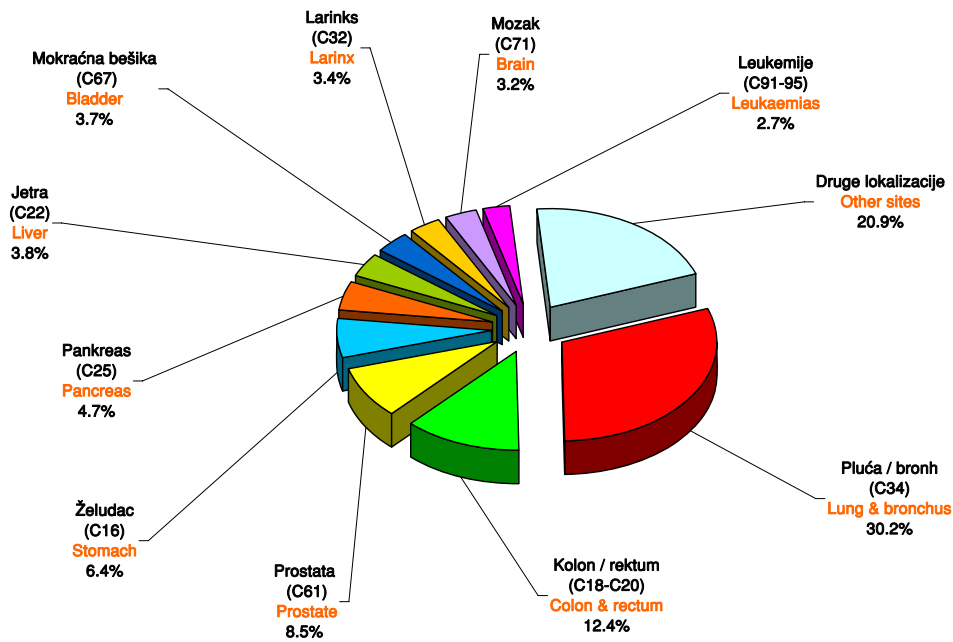
**Slika 5. Vodeće lokalizacije u obolevanju od malignih tumora kod muškaraca, centralna Srbija, 2009.god.**  
**Figure 5. The leading cancer sites in males, Central Serbia, 2009**



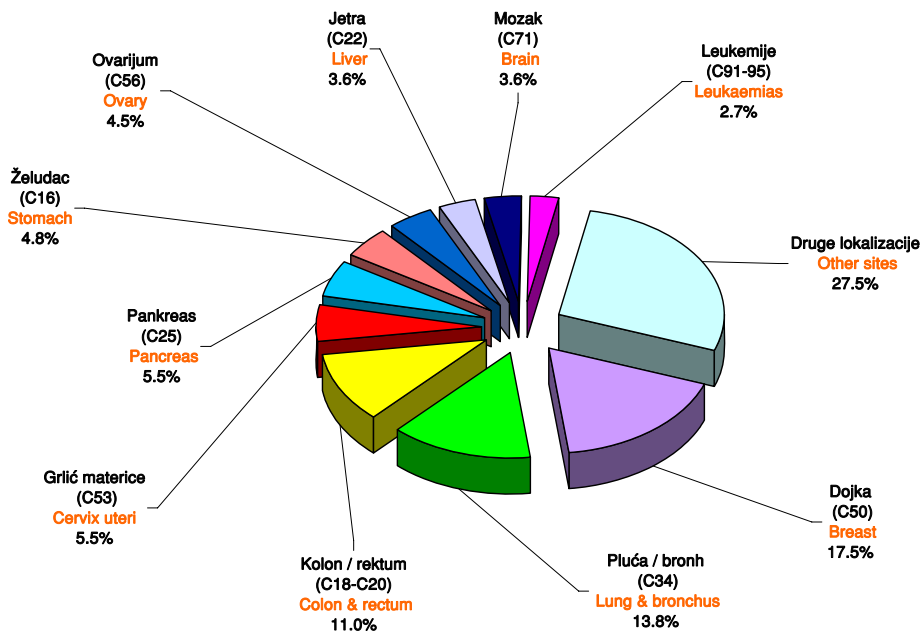
**Slika 6. Vodeće lokalizacije u obolevanju od malignih tumora kod žena, centralna Srbija, 2009. god.**  
**Figure 6. The leading cancer sites in females, Central Serbia, 2009**



**Slika 7. Vodeće lokalizacije u umiranju od malignih tumora kod muškaraca, centralna Srbija, 2009. god.**  
**Figure 7. The leading cancer sites, deaths, males in Central Serbia, 2009**



**Slika 8. Vodeće lokalizacije u umiranju od malignih tumora kod žena, centralna Srbija, 2009. god.**  
**Figure 8. The leading cancer sites, deaths, females in Central Serbia, 2009**



**Tabela 5. Broj novoobolelih slučajeva od raka prema vodećim lokalizacijama i okruzima, muškarci, centralna Srbija, 2009. godina**

*Table 5. Number of new cancer cases by leading primary sites, males, regions in Central Serbia, 2009*

Primarne lokalizacije (10-MKB) <i>Primary sites (ICD-10)</i>	O k r u g ( R e g i o n )																		
	centralna Srbija	Grad Beograd	Kolubarski	Mačvanski	Raški	Moravički	Zlatiborski	Rasinski	Šumadijski	Pomoravski	Braničevski	Podunavski	Zaječarski	Borski	Nišavski	Pčinjski	Jablanički	Toplički	Pirotski
Pluća i bronh, (C34) <i>Lung and bronchus</i>	3183	1243	118	197	130	132	138	100	176	79	86	119	56	86	178	128	132	42	43
Kolon i rektum (C18-C20) <i>Colon and rectum</i>	1693	541	65	98	66	69	76	72	117	57	57	51	56	66	132	36	69	21	44
Prostata (C61) <i>Prostate</i>	1673	688	68	50	70	62	61	71	67	53	54	59	44	63	91	46	60	15	51
Mokraćna bešika (C67) <i>Bladder</i>	789	196	30	34	49	42	28	37	51	36	39	50	20	22	44	42	37	9	23
Želudac (C16) <i>Stomach</i>	536	99	26	46	33	36	25	17	35	12	9	16	8	26	41	33	34	12	28
Larinks (C32) <i>Larynx</i>	506	140	18	38	17	19	26	22	21	16	18	27	13	22	44	18	26	11	10
Usna šuplj. i farinks (C00-C10) <i>Mouth and pharynx</i>	341	119	7	27	13	12	16	8	23	11	17	13	6	9	16	8	20	8	8
Pankreas (C25) <i>Pancreas</i>	312	49	21	24	18	8	24	10	20	6	19	10	9	21	30	12	11	5	15
Mozak (C71) <i>Brain</i>	305	72	12	13	12	9	9	20	24	2	13	17	8	11	24	17	16	10	16
Bubreg (C64) <i>Kidney</i>	260	69	8	11	16	23	15	14	23	5	6	12	5	11	14	8	11	2	7
Jetra (C22) <i>Liver</i>	256	22	5	23	24	4	14	3	8	2	15	12	4	12	45	13	21	6	23
Leukemije (C91-C95) <i>Leukaemias</i>	233	42	11	13	9	23	25	11	21	12	0	2	3	8	22	3	17	3	8
Druge lokalizacije <i>Other sites</i>	3925	1358	154	171	189	134	208	217	302	86	99	127	107	131	241	102	135	42	122
Sve lokalizacije (C00-C97) <i>All sites</i>	14012	4638	543	745	646	573	665	602	888	377	432	515	339	488	922	466	589	186	398
Sve lokalizacije bez kože (C44) <i>All sites but skin (C44)</i>	12333	4055	469	660	544	489	553	479	792	361	414	467	301	435	835	442	536	177	324

**Tabela 6. Broj novoobolelih slučajeva od raka prema vodećim lokalizacijama i okruzima, žene, centralna Srbija, 2009. godina**

*Table 6. Number of new cancer cases by leading primary sites, females, regions in Central Serbia, 2009*

Primarne lokalizacije (10-MKB) <i>Primary sites (ICD-10)</i>	O k r u g ( R e g i o n )																		
	centralna Srbija	Grad Beograd	Kolubarski	Mačvanski	Raški	Moravički	Zlatiborski	Rasinski	Šumadijski	Pomoravski	Braničevski	Podunavski	Zaječarski	Borski	Nišavski	Pčinjski	Jablanički	Toplički	Pirotski
Dojka (C50) <i>Breast</i>	3307	1353	66	156	169	118	150	112	194	113	86	108	57	82	242	79	107	45	70
Grič materice (C53) <i>Cervix uteri</i>	1104	384	39	38	53	47	61	33	61	38	49	31	25	38	55	46	65	18	23
Kolon i rektum (C18-C20) <i>Colon and rectum</i>	1057	311	48	78	46	44	52	41	77	33	30	35	37	35	80	29	37	16	28
Pluća i bronh (C34) <i>Lung and bronchus</i>	975	350	31	56	37	43	47	33	59	37	28	40	23	25	56	51	24	19	16
Materica (C54) <i>Corpus uteri</i>	719	276	18	20	22	22	16	27	36	18	20	20	24	15	66	27	58	13	21
Ovarijum (C56) <i>Ovary</i>	430	107	13	13	27	17	20	21	30	22	17	18	11	13	45	12	27	6	11
Želudac (C16) <i>Stomach</i>	284	46	19	28	14	14	13	15	22	5	8	16	6	5	24	18	17	4	10
Mokraćna bešika (C67) <i>Bladder</i>	261	82	11	7	15	16	12	9	19	12	9	15	5	13	13	5	11	1	6
Pankreas (C25) <i>Pancreas</i>	258	50	16	18	12	5	17	10	22	8	6	9	9	9	30	10	14	5	8
Mozak (C71) <i>Brain</i>	253	70	14	9	12	5	9	13	22	6	7	14	4	9	17	13	8	5	16
Jetra (C22) <i>Liver</i>	191	15	11	18	23	2	11	8	10	2	4	9	6	8	27	15	11	5	6
Leukemije (C91-C95) <i>Leukaemias</i>	148	39	7	8	5	11	7	6	12	11	0	0	4	4	16	3	13	0	2
Druge lokalizacije <i>Other sites</i>	3664	1314	168	162	154	138	182	163	298	80	103	106	95	137	215	96	122	42	89
Sve lokalizacije (C00-C97) <i>All sites</i>	12651	4397	461	611	589	482	597	491	862	385	367	421	306	393	886	404	514	179	306
Sve lokalizacije bez kože (C44) <i>All sites but skin (C44)</i>	11145	3838	368	537	508	402	505	406	758	365	339	382	282	353	818	386	464	169	265

Tabela 7. Stope incidencije od raka na 100.000 stanovnika prema vodećim lokalizacijama i okruzima, muškarci, centralna Srbija, 2009. godina

Table 7. Cancer incidence rates per 100.000 population by leading primary sites, males, regions in Central Serbia, 2009

Primarne lokalizacije (10-MKB) Primary sites (ICD-10)	O k r u g ( R e g i o n )																		
	centralna Srbija	Grad Beograd	Kolubarski	Mačvanski	Raški	Moravički	Zlatiborski	Rasinski	Šumadijski	Pomoravski	Braničevski	Podunavski	Zaječarski	Borski	Nišavski	Pčinjski	Jablanički	Toplički	Pirotski
Pluća i bronh, (C34) <i>Lung and bronchus</i>	122.3	161.5	132.7	127.9	88.2	124.7	94.0	83.7	124.5	75.5	94.0	119.0	92.8	132.7	96.7	111.9	116.2	88.1	88.6
Kolon i rektum (C18-C20) <i>Colon and rectum</i>	65.0	70.3	73.1	63.6	44.8	65.2	51.8	60.2	82.8	54.5	62.3	51.0	92.8	101.8	71.7	31.5	60.8	44.1	90.6
Prostata (C61) <i>Prostate</i>	64.3	89.4	76.5	32.5	47.5	58.6	41.6	59.4	47.4	50.7	59.0	59.0	72.9	97.2	49.4	40.2	52.8	31.5	105.1
Mokraćna bešika (C67) <i>Bladder</i>	30.3	25.5	33.7	22.1	33.2	39.7	19.1	31.0	36.1	34.4	42.6	50.0	33.1	33.9	23.9	36.7	32.6	18.9	47.4
Želudac (C16) <i>Stomach</i>	20.6	12.9	29.2	29.9	22.4	34.0	17.0	14.2	24.8	11.5	9.8	16.0	13.3	40.1	22.3	28.8	29.9	25.2	57.7
Larinks (C32) <i>Larynx</i>	19.5	18.2	20.2	24.7	11.5	18.0	17.7	18.4	14.9	15.3	19.7	27.0	21.5	35.5	23.9	15.7	22.9	23.1	20.6
Usna šuplj. i farinks (C00-C10) <i>Mouth and pharynx</i>	13.1	15.5	7.9	17.5	8.8	11.3	10.9	6.7	16.3	10.5	18.6	13.0	9.9	13.9	8.7	7.0	17.6	16.8	16.5
Pankreas (C25) <i>Pancreas</i>	12.0	6.4	23.6	15.6	12.2	7.6	16.3	8.4	14.1	5.7	20.8	10.0	14.9	32.4	16.3	10.5	9.7	10.5	30.9
Mozak (C71) <i>Brain</i>	11.7	9.4	13.5	8.4	8.1	8.5	6.1	16.7	17.0	1.9	14.2	17.0	13.3	17.0	13.0	14.9	14.1	21.0	33.0
Bubreg (C64) <i>Kidney</i>	10.0	9.0	9.0	7.1	10.9	21.7	10.2	11.7	16.3	4.8	6.6	12.0	8.3	17.0	7.6	7.0	9.7	4.2	14.4
Jetra (C22) <i>Liver</i>	9.8	2.9	5.6	14.9	16.3	3.8	9.5	2.5	5.7	1.9	16.4	12.0	6.6	18.5	24.4	11.4	18.5	12.6	47.4
Leukemije (C91-C95) <i>Leukaemias</i>	9.0	5.5	12.4	8.4	6.1	21.7	17.0	9.2	14.9	11.5	0.0	2.0	5.0	12.3	12.0	2.6	15.0	6.3	16.5
Druge lokalizacije <i>Other sites</i>	150.7	176.5	173.2	111.0	128.2	126.6	141.7	181.5	213.6	82.2	108.2	127.0	177.2	200.6	130.9	89.2	118.9	88.1	251.3
Sve lokalizacije (C00-C97) <i>All sites</i>	538.3	602.8	610.8	483.8	438.2	541.4	453.0	503.6	628.1	360.5	472.4	514.9	561.5	752.9	500.9	407.4	518.7	390.2	819.9
Sve lokalizacije bez kože (C44) <i>All sites but skin (C44)</i>	473.8	527.0	527.6	428.6	369.0	462.0	376.7	400.7	560.2	345.2	452.7	467.0	498.6	671.2	453.6	386.4	472.0	371.3	667.4

Tabela 8. Stope incidencije od raka na 100.000 stanovnika prema vodećim lokalizacijama i okruzima, žene, centralna Srbija, 2009. godina

Table 8. Cancer incidence rates per 100.000 population by leading primary sites, females, regions in Central Serbia, 2009

Primarne lokalizacije (10-MKB) Primary sites (ICD-10)	O k r u g ( R e g i o n )																		
	centralna Srbija	Grad Beograd	Kolubarski	Mačvanski	Raški	Moravički	Zlatiborski	Rasinski	Šumadijski	Pomoravski	Braničevski	Podunavski	Zaječarski	Borski	Nišavski	Pčinjski	Jablanički	Toplički	Pirotski
Dojka (C50) <i>Breast</i>	120.3	157.1	72.2	99.5	111.4	107.7	100.0	89.8	131.0	101.2	87.7	104.7	89.0	121.2	127.4	69.4	94.2	96.0	147.9
Grič materice (C53) <i>Cervix uteri</i>	40.2	44.6	42.7	24.2	34.9	42.9	40.7	26.5	41.2	34.0	49.9	30.1	39.0	56.2	29.0	40.4	57.2	38.4	48.6
Kolon i rektum (C18-C20) <i>Colon and rectum</i>	38.4	36.1	52.5	49.7	30.3	40.2	34.7	32.9	52.0	23.7	30.6	53.1	57.8	37.0	42.1	25.5	32.6	34.1	59.2
Pluća i bronh (C34) <i>Lung and bronchus</i>	35.5	40.6	33.9	35.7	24.4	39.2	31.3	26.5	39.8	33.1	28.5	38.8	35.9	37.0	29.5	44.8	21.1	40.5	33.8
Materica (C54) <i>Corpus uteri</i>	26.1	32.1	19.7	12.8	14.5	20.1	10.7	21.7	24.3	16.1	20.4	19.4	37.5	22.2	34.7	23.7	51.1	27.7	44.4
Ovarijum (C56) <i>Ovary</i>	15.6	12.4	14.2	8.3	17.8	15.5	13.3	16.8	20.3	19.7	17.3	17.5	17.2	19.2	23.7	10.5	23.8	12.8	23.2
Želudac (C16) <i>Stomach</i>	10.3	5.3	20.8	17.9	9.2	0.0	8.7	12.0	14.9	4.5	8.2	15.5	9.4	7.4	12.6	15.8	15.0	8.5	21.1
Mokraćna bešika (C67) <i>Bladder</i>	9.5	0.1	0.0	0.0	0.7	0.0	0.0	16.7	14.9	1.0	0.0	1.0	3.1	3.1	0.5	0.9	0.0	0.0	0.0
Pankreas (C25) <i>Pancreas</i>	9.4	5.8	17.5	11.5	7.9	4.6	11.3	8.0	14.9	7.2	6.1	8.7	14.1	13.3	15.8	8.8	12.3	10.7	16.9
Mozak (C71) <i>Brain</i>	9.2	8.1	15.3	5.7	7.9	4.6	6.0	10.4	14.9	1.0	7.1	13.6	6.2	13.3	9.0	11.4	7.0	10.7	33.8
Jetra (C22) <i>Liver</i>	6.9	1.7	12.0	11.5	15.2	1.8	7.3	6.4	6.8	1.8	4.1	8.7	9.4	11.8	14.2	13.2	9.7	2.1	12.7
Leukemije (C91-C95) <i>Leukaemias</i>	5.4	4.5	7.7	5.1	3.3	10.0	4.7	4.8	8.1	9.9	0.0	0.0	6.2	5.9	8.4	2.6	11.4	0.0	4.2
Druge lokalizacije <i>Other sites</i>	133.3	162.0	195.8	108.4	110.7	153.3	129.3	121.2	199.2	91.8	114.2	97.2	153.0	233.4	119.5	87.8	117.1	100.3	200.8
Sve lokalizacije (C00-C97) <i>All sites</i>	460.1	510.6	504.4	389.5	388.2	439.9	397.9	393.7	582.0	344.9	374.1	408.3	477.7	580.9	466.5	354.8	452.7	381.7	646.7
Sve lokalizacije bez kože (C44) <i>All sites but skin (C44)</i>	405.3	445.7	402.6	342.4	334.8	366.9	336.5	325.6	511.8	327.0	345.6	370.5	440.3	521.8	430.7	339.0	408.6	360.4	560.1

**Tabela 9. Standardizovane stope incidencije od raka na 100.000 stanovnika prema vodećim lokalizacijama i okruzima, muškarci, centralna Srbija, 2009. godina**

*Table 9. Standardized cancer incidence rates per 100.000 population by leading primary sites, males, regions in Central Serbia, 2009*

Primarne lokalizacije (10-MKB) <i>Primary sites (ICD-10)</i>	O k r u g ( R e g i o n )																		
	centralna Srbija	Grad Beograd	Kolubarski	Mačvanski	Raški	Moravički	Zlatiborski	Rasinski	Šumadijski	Pomoravski	Braničevski	Podunavski	Zaječarski	Borski	Nišavski	Pčinjski	Jablanički	Toplički	Pirotski
Pluća i bronh, (C34) <i>Lung and bronchus</i>	69.9	96.7	71.7	71.5	55.8	70.1	51.9	43.4	68.3	41.9	57.2	70.1	41.0	66.8	51.0	79.9	66.5	49.5	41.9
Kolon i rektum (C18-C20) <i>Colon and rectum</i>	35.7	40.8	39.1	35.6	28.5	32.5	27.3	33.8	44.2	24.9	33.8	29.2	39.3	47.5	37.9	21.9	32.7	23.4	39.8
Prostata (C61) <i>Prostate</i>	29.8	44.3	33.3	18.0	23.0	24.7	18.5	26.8	22.2	23.0	23.3	30.0	26.2	37.5	21.4	22.5	21.7	13.4	40.8
Mokraćna bešika (C67) <i>Bladder</i>	16.3	14.3	17.7	11.9	20.0	21.5	9.3	15.5	18.5	17.9	21.4	28.3	15.8	18.7	11.1	25.1	17.3	10.5	21.3
Želudac (C16) <i>Stomach</i>	10.9	7.5	13.2	17.3	13.4	17.7	8.9	7.4	13.5	5.4	6.2	8.8	6.0	16.6	10.1	19.5	13.4	9.6	26.3
Larinks (C32) <i>Larynx</i>	11.6	11.3	10.9	14.1	8.3	10.7	10.6	11.0	8.3	8.8	11.5	17.2	9.3	19.2	14.0	11.1	12.3	13.2	11.9
Usna šuplj. i farinks (C00-C10) <i>Mouth and pharynx</i>	7.5	9.4	4.6	11.3	5.5	6.0	5.4	4.1	9.4	5.6	9.3	6.1	3.8	6.9	4.3	5.9	8.9	8.7	8.6
Pankreas (C25) <i>Pancreas</i>	6.6	4.0	12.0	9.3	7.3	4.3	8.5	4.6	7.5	2.9	10.7	5.4	8.6	17.0	8.0	7.2	5.2	6.1	12.5
Mozak (C71) <i>Brain</i>	8.3	8.6	7.4	5.9	6.0	5.1	4.1	8.9	11.9	0.9	9.2	10.9	7.6	9.7	7.5	11.9	11.1	11.5	26.1
Bubreg (C64) <i>Kidney</i>	5.8	5.2	4.0	4.9	6.9	12.8	5.0	7.1	9.4	1.9	4.4	6.8	6.5	10.3	3.7	5.5	6.0	3.5	7.3
Jetra (C22) <i>Liver</i>	5.1	1.5	1.6	8.8	9.7	1.2	5.5	1.5	2.8	0.9	6.8	7.0	2.3	9.4	11.5	6.9	9.5	6.8	21.5
Leukemije (C91-C95) <i>Leukaemias</i>	6.4	4.2	10.2	5.2	4.2	17.2	13.8	6.7	9.4	9.3	0.0	0.8	2.2	6.8	9.3	1.7	10.3	4.3	8.4
Druge lokalizacije <i>Other sites</i>	90.8	113.5	93.9	67.2	81.9	68.5	79.2	97.3	130.0	46.3	68.6	90.2	90.5	104.1	71.5	67.8	72.1	50.6	114.7
Sve lokalizacije (C00-C97) <i>All sites</i>	304.7	361.3	319.7	281	270.6	292.3	248.0	268.3	355.4	189.8	262.4	310.9	259.0	370.6	261.2	286.7	287.2	211.2	380.9
Sve lokalizacije bez kože (C44) <i>All sites but skin (C44)</i>	271.1	320.3	280.5	251.6	229.6	252.6	208.7	221.2	320.0	181.9	252.6	281.5	231.7	331.6	238.0	271.4	261.6	201.2	317.7

**Tabela 10. Standardizovane stope incidencije od raka na 100.000 stanovnika prema vodećim lokalizacijama i okruzima, žene, centralna Srbija, 2009. godina**

*Table 10. Standardized cancer incidence rates per 100.000 population by leading primary sites, females, regions in Central Serbia, 2009*

Primarne lokalizacije (10-MKB) <i>Primary sites (ICD-10)</i>	O k r u g ( R e g i o n )																		
	centralna Srbija	Grad Beograd	Kolubarski	Mačvanski	Raški	Moravički	Zlatiborski	Rasinski	Šumadijski	Pomoravski	Braničevski	Podunavski	Zaječarski	Borski	Nišavski	Pčinjski	Jablanički	Toplički	Pirotski
Dojka (C50) <i>Breast</i>	71.5	95.5	41.4	60.1	71.7	57.0	56.0	50.3	77.4	63.6	53.1	67.3	43.6	62.2	73.6	48.0	52.0	54.5	70.4
Grič materice (C53) <i>Cervix uteri</i>	27.1	28.1	29.0	16.4	26.1	31.7	27.0	18.7	27.7	25.1	29.0	21.1	29.7	38.7	19.8	31.6	40.1	26.4	36.4
Kolon i rektum (C18-C20) <i>Colon and rectum</i>	19.2	19.4	21.6	23.8	16.5	20.0	19.1	13.9	26.7	11.8	15.0	28.2	21.3	15.5	17.8	14.3	16.1	17.1	23.4
Pluća i bronh (C34) <i>Lung and bronchus</i>	18.7	21.9	16.6	20.2	13.5	18.6	15.4	14.9	21.8	17.1	16.0	20.2	17.5	16.7	14.5	29.2	9.7	18.6	10.4
Materica (C54) <i>Corpus uteri</i>	14.4	17.6	12.5	6.9	8.4	10.9	6.0	11.0	12.6	8.7	8.8	11.1	17.3	10.6	19.6	16.4	30.4	14.7	19.7
Ovarijum (C56) <i>Ovary</i>	9.6	8.1	8.6	5.6	12.5	7.3	9.1	11.2	11.8	9.4	8.4	10.8	9.1	11.4	11.5	7.7	14.8	12.5	11.2
Želudac (C16) <i>Stomach</i>	4.8	2.7	8.9	7.8	4.5	0.0	4.3	5.3	6.9	2.0	3.9	9.0	3.9	1.9	5.4	10.6	6.1	4.4	8.0
Mokraćna bešika (C67) <i>Bladder</i>	4.5	0.1	0.0	0.0	0.2	0.0	0.0	8.9	9.7	0.5	0.0	1.1	2.0	2.2	0.7	0.5	0.0	0.0	0.0
Pankreas (C25) <i>Pancreas</i>	4.5	3.2	7.8	5.9	3.5	3.4	5.5	3.1	7.9	3.4	2.2	4.5	4.7	5.2	6.0	4.1	4.9	3.2	8.2
Mozak (C71) <i>Brain</i>	6.6	8.4	8.8	5.2	4.3	3.1	4.6	7.8	9.7	0.5	6.3	6.3	3.3	6.3	3.9	7.8	5.3	6.4	17.7
Jetra (C22) <i>Liver</i>	3.1	0.8	4.5	5.0	8.5	0.6	3.4	2.8	3.7	1.2	1.0	4.1	3.2	5.2	5.1	8.4	3.8	1.5	5.4
Leukemije (C91-C95) <i>Leukaemias</i>	3.6	3.6	3.5	3.3	3.0	7.6	3.3	4.4	4.2	4.9	0.0	0.0	1.8	3.7	5.4	1.7	7.2	0.0	1.4
Druge lokalizacije <i>Other sites</i>	71.1	91.6	94.0	60.8	62.9	72.8	61.9	62.5	105.5	45.5	66.4	53.2	63.6	103.1	59.0	55.8	60.6	59.1	94.5
Sve lokalizacije (C00-C97) <i>All sites</i>	258.6	301.0	257.2	221.2	235.5	233.1	215.7	214.8	325.5	193.6	210.2	236.8	220.8	282.8	242.3	236.1	251.1	218.5	306.6
Sve lokalizacije bez kože (C44) <i>All sites but skin (C44)</i>	233.4	269.8	213.4	198.5	207.6	202.2	188.2	182.4	292.3	186.5	195.9	217.1	210.0	262.2	227.6	227.0	231.6	207.4	269.2

**Tabela 11. Broj umrlih slučajeva od raka prema vodećim lokalizacijama i okruzima, muškarci, centralna Srbija, 2009. godina**

*Table 11. Number of death cancer cases by leading primary sites, males, regions in Central Serbia, 2009*

Primarne lokalizacije (10-MKB) <i>Primary sites (ICD-10)</i>	O k r u g ( R e g i o n )																		
	centralna Srbija	Grad Beograd	Kolubarski	Mačvanski	Raški	Moravički	Zlatiborski	Rasinski	Šumadijski	Pomoravski	Bраниčevski	Podunavski	Zaječarski	Borski	Nišavski	Pčinjski	Jablanički	Toplički	Pirotski
Pluća i bronh, (C34) <i>Lung and bronchus</i>	2566	856	104	155	115	94	139	100	139	135	101	115	53	64	148	65	109	36	38
Kolon i rektum (C18-C20) <i>Colon and rectum</i>	1054	322	43	63	40	38	54	48	63	54	44	37	41	28	90	15	36	13	25
Prostata (C61) <i>Prostate</i>	720	197	22	40	36	38	48	42	38	37	32	27	24	23	46	21	28	3	18
Želudac (C16) <i>Stomach</i>	548	146	24	42	26	26	37	29	28	21	10	22	5	17	46	26	23	12	8
Pankreas (C25) <i>Pancreas</i>	402	129	16	18	19	22	33	13	21	20	17	9	14	9	20	12	12	2	16
Jetra (C22) <i>Liver</i>	327	82	13	19	20	10	15	11	14	9	15	14	4	12	41	10	18	8	12
Mokraćna bešika (C67) <i>Bladder</i>	312	96	11	22	23	15	16	14	20	18	13	14	9	2	9	11	8	4	7
Larinks (C32) <i>Larynx</i>	292	67	11	27	9	15	14	19	21	11	11	14	6	7	32	5	18	4	1
Mozak (C71) <i>Brain</i>	275	106	13	8	17	9	12	19	14	6	8	7	8	8	14	5	12	3	6
Leukemije(C91-C95) <i>Leukaemias</i>	233	74	6	14	10	13	21	16	14	9	8	4	3	6	17	4	4	5	5
Druge lokalizacije <i>Other sites</i>	1777	556	68	110	77	77	105	77	93	79	57	75	46	34	136	52	75	23	37
Sve lokalizacije (C00-C97) <i>All sites</i>	8506	2631	331	518	392	357	494	388	465	399	316	338	213	210	599	226	343	113	173
Sve lokalizacije bez kože (C44) <i>All sites but skin (C44)</i>	8447	2618	330	515	385	356	492	387	458	398	316	336	212	207	592	223	338	112	172

**Tabela 12. Broj umrlih slučajeva od raka prema vodećim lokalizacijama i okruzima, žene, centralna Srbija, 2009. godina**

*Table 12. Number of death cancer cases by leading primary sites, females, regions in Central Serbia, 2009*

Primarne lokalizacije (10-MKB) <i>Primary sites (ICD-10)</i>	O k r u g ( R e g i o n )																		
	centralna Srbija	Grad Beograd	Kolubarski	Mačvanski	Raški	Moravički	Zlatiborski	Rasinski	Šumadijski	Pomoravski	Bраниčevski	Podunavski	Zaječarski	Borski	Nišavski	Pčinjski	Jablanički	Toplički	Pirotski
Dojka (C50) <i>Breast</i>	1145	427	34	55	56	53	54	43	58	53	30	39	33	28	93	22	43	11	13
Pluća i bronh (C34) <i>Lung and bronchus</i>	904	376	36	39	30	31	42	24	53	42	29	41	19	13	52	32	20	15	10
Kolon i rektum (C18-C20) <i>Colon and rectum</i>	743	262	35	43	34	20	34	29	36	40	23	26	23	16	51	23	25	13	10
Grić materice (C53) <i>Cervix uteri</i>	358	108	15	20	20	19	22	11	20	19	15	12	11	8	28	10	8	6	6
Pankreas (C25) <i>Pancreas</i>	358	124	19	12	12	13	19	19	21	23	12	11	10	3	27	8	13	6	6
Želudac (C16) <i>Stomach</i>	311	76	19	31	11	16	10	17	17	9	10	15	10	5	22	19	15	1	8
Ovarijum (C56) <i>Ovary</i>	296	106	9	11	17	12	11	17	21	11	7	12	7	8	22	6	13	1	5
Jetra (C22) <i>Liver</i>	234	41	9	19	20	8	12	13	5	8	5	8	9	7	33	11	12	4	10
Mozak (C71) <i>Brain</i>	234	93	10	9	18	10	11	13	10	11	5	7	2	6	10	5	7	1	6
Leukemije(C91-C95) <i>Leukaemias</i>	179	56	5	11	6	5	9	10	11	13	8	3	5	3	14	8	8	0	4
Druge lokalizacije <i>Other sites</i>	1774	611	55	110	68	88	87	72	88	71	56	50	54	39	132	60	70	26	37
Sve lokalizacije (C00-C97) <i>All sites</i>	6536	2280	246	360	292	275	311	268	340	300	200	224	183	136	484	204	234	84	115
Sve lokalizacije bez kože (C44) <i>All sites but skin (C44)</i>	6483	2264	245	357	289	274	308	266	337	297	198	223	181	136	482	200	229	82	115

**Tabela 13. Stope mortaliteta od raka na 100.000 stanovnika prema vodećim lokalizacijama i okruzima, muškarci, centralna Srbija, 2009. godina**

*Table 13. Cancer mortality rates per 100.000 population by leading primary sites, males, regions in Central Serbia, 2009*

Primarne lokalizacije (10-MKB) Primary sites (ICD-10)	O k r u g ( R e g i o n )																		
	centralna Srbija	Grad Beograd	Kolubarski	Mačvanski	Raški	Moravički	Zlatiborski	Rasinski	Šumadijski	Pomoravski	Braničevski	Podunavski	Zaječarski	Borski	Nišavski	Pčinjski	Jablanički	Toplički	Pirotski
Pluća i bronh, (C34) <i>Lung and bronchus</i>	98.6	111.2	117.0	100.7	78.0	88.8	94.7	83.7	98.3	129.1	110.4	115.0	87.8	98.7	80.4	56.8	96.0	75.5	78.3
Kolon i rektum (C18-C20) <i>Colon and rectum</i>	40.5	41.8	48.4	40.9	27.1	35.9	36.8	40.2	44.6	51.6	48.1	37.0	67.9	43.2	48.9	13.1	31.7	27.3	51.5
Prostata (C61) <i>Prostate</i>	27.7	25.6	24.7	26.0	24.4	35.9	32.7	35.1	26.9	35.4	35.0	27.0	39.8	35.5	25.0	18.4	24.7	6.3	37.1
Želudac (C16) <i>Stomach</i>	21.1	19.0	27.0	27.3	17.6	24.6	25.2	24.3	19.8	20.1	10.9	22.0	8.3	26.2	25.0	22.7	20.3	25.2	16.5
Pankreas (C25) <i>Pancreas</i>	15.4	16.8	18.0	11.7	12.9	20.8	22.5	10.9	14.9	19.1	18.6	9.0	23.2	13.9	10.9	10.5	10.6	4.2	33.0
Jetra (C22) <i>Liver</i>	12.6	10.7	14.6	12.3	13.6	9.4	10.2	9.2	9.9	8.6	16.4	14.0	6.6	18.5	22.3	8.7	15.9	16.8	24.7
Mokraćna bešika (C67) <i>Bladder</i>	12.0	12.5	12.4	14.3	15.6	14.2	10.9	11.7	14.1	17.2	14.2	14.0	14.9	3.1	4.9	9.6	7.0	8.4	14.4
Larinks (C32) <i>Larynx</i>	11.2	8.7	12.4	17.5	6.1	14.2	9.5	15.9	14.9	10.5	12.0	14.0	9.9	10.8	17.4	4.4	15.9	8.4	2.1
Mozak (C71) <i>Brain</i>	10.6	13.8	14.6	5.2	11.5	8.5	8.2	15.9	9.9	5.7	8.7	7.0	13.3	12.3	7.6	4.4	10.6	6.3	12.4
Leukemije(C91-C95) <i>Leukaemias</i>	9.0	9.6	6.7	9.1	6.8	12.3	14.3	13.4	9.9	8.6	8.7	4.0	5.0	9.3	9.2	3.5	3.5	10.5	10.3
Druge lokalizacije <i>Other sites</i>	68.3	72.3	76.5	71.4	52.2	72.7	71.5	64.4	65.8	75.5	62.3	75.0	76.2	52.5	73.9	45.5	66.0	48.2	76.2
Sve lokalizacije (C00-C97) <i>All sites</i>	326.8	341.9	372.4	336.4	265.9	337.3	336.5	324.6	328.9	381.6	345.5	338.0	352.8	324.0	325.4	197.6	302.0	237.0	356.4
Sve lokalizacije bez kože (C44) <i>All sites but skin (C44)</i>	324.5	340.2	371.2	334.4	261.1	336.4	335.1	323.8	323.9	380.6	345.5	336.0	351.2	319.4	321.6	194.9	297.6	234.9	354.3

**Tabela 14. Stope mortaliteta od raka na 100.000 stanovnika prema vodećim lokalizacijama i okruzima, žene, centralna Srbija, 2009. godina**

*Table 14. Cancer mortality rates per 100.000 population by leading primary sites, females, regions in Central Serbia, 2009*

Primarne lokalizacije (10-MKB) Primary sites (ICD-10)	O k r u g ( R e g i o n )																		
	centralna Srbija	Grad Beograd	Kolubarski	Mačvanski	Raški	Moravički	Zlatiborski	Rasinski	Šumadijski	Pomoravski	Braničevski	Podunavski	Zaječarski	Borski	Nišavski	Pčinjski	Jablanički	Toplički	Pirotski
Dojka (C50) <i>Breast</i>	41.6	49.6	37.2	35.1	36.9	48.4	36.0	34.5	39.2	47.5	30.6	37.8	51.5	41.4	49.0	19.3	37.9	23.5	27.5
Pluća i bronh (C34) <i>Lung and bronchus</i>	32.9	43.7	39.4	24.9	19.8	28.3	28.0	19.2	35.8	37.6	29.6	39.8	29.7	19.2	27.4	28.1	17.6	32.0	21.1
Kolon i rektum (C18-C20) <i>Colon and rectum</i>	27.0	30.4	38.3	27.4	22.4	18.3	22.7	23.3	24.3	35.8	23.4	25.2	35.9	23.7	26.9	20.2	22.0	27.7	21.1
Grić materice (C53) <i>Cervix uteri</i>	13.0	12.5	16.4	12.8	13.2	17.3	14.7	8.8	13.5	17.0	15.3	11.6	17.2	11.8	14.7	8.8	7.0	12.8	12.7
Pankreas (C25) <i>Pancreas</i>	13.0	14.4	20.8	7.7	7.9	11.9	12.7	15.2	14.2	20.6	12.2	10.7	15.6	4.4	14.2	7.0	11.4	12.8	12.7
Želudac (C16) <i>Stomach</i>	11.3	8.8	20.8	19.8	7.2	14.6	6.7	13.6	11.5	8.1	10.2	14.5	15.6	7.4	11.6	16.7	13.2	2.1	16.9
Ovarijum (C56) <i>Ovary</i>	10.8	12.3	9.8	7.0	11.2	11.0	7.3	13.6	14.2	9.9	7.1	11.6	10.9	11.8	11.6	5.3	11.4	2.1	10.6
Jetra (C22) <i>Liver</i>	8.5	4.8	9.8	12.1	13.2	7.3	8.0	10.4	3.4	7.2	5.1	7.8	14.1	10.3	17.4	9.7	10.6	8.5	21.1
Mozak (C71) <i>Brain</i>	8.5	10.8	10.9	5.7	11.9	9.1	7.3	10.4	6.8	9.9	5.1	6.8	3.1	8.9	5.3	4.4	6.2	2.1	12.7
Leukemije(C91-C95) <i>Leukaemias</i>	6.5	6.5	5.5	7.0	4.0	4.6	6.0	8.0	7.4	11.6	8.2	2.9	7.8	4.4	7.4	7.0	7.0	0.0	8.5
Druge lokalizacije <i>Other sites</i>	64.5	71.0	60.2	70.1	44.8	80.3	58.0	57.7	59.4	63.6	57.1	48.5	84.3	57.6	69.5	52.7	61.6	55.4	78.2
Sve lokalizacije (C00-C97) <i>All sites</i>	237.7	264.8	269.1	229.5	192.5	251.0	207.3	214.9	229.5	268.8	203.9	217.2	285.7	201.0	254.8	179.2	206.1	179.1	243.0
Sve lokalizacije bez kože (C44) <i>All sites but skin (C44)</i>	235.8	262.9	268.1	227.6	190.5	250.0	205.3	213.3	227.5	266.1	201.8	216.3	282.6	201.0	253.8	175.7	201.7	174.8	243.0

**Tabela 15. Standardizovane stope mortaliteta od raka na 100.000 stanovnika prema vodećim lokalizacijama i okruzima, muškarci centralna Srbija, 2009. godina**

*Table 15. Standardized cancer mortality rates per 100.000 population by leading primary sites, males, regions in Central Serbia, 2009*

Primarne lokalizacije (10-MKB) Primary sites (ICD-10)	centralna Srbija	O k r u g ( R e g i o n )																	
		Grad Beograd	Kolubarski	Mačvanski	Raški	Moravički	Zlatiborski	Rasinski	Šumadijski	Pomoravski	Bраниčevski	Podunavski	Zaječarski	Borski	Nišavski	Pčinjski	Jablanički	Toplički	Pirotski
Pluća i bronh, (C34) <i>Lung and bronchus</i>	53.9	62.5	60.7	54.8	50.0	50.9	51.9	44.9	53.4	63.9	61.4	65.4	38.5	49.1	41.7	37.3	52.4	39.2	35.1
Kolon i rektum (C18-C20) <i>Colon and rectum</i>	19.8	21.3	23.9	21.3	15.4	17.9	18.4	20.4	21.4	20.4	21.3	19.3	22.9	18.5	22.5	8.8	15.1	12.6	18.5
Prostata (C61) <i>Prostate</i>	10.8	10.9	7.6	10.6	11.6	12.2	13.6	12.6	11.2	11.9	10.1	11.8	12.0	11.8	9.1	9.7	9.8	1.7	11.0
Želudac (C16) <i>Stomach</i>	10.7	10.0	12.7	14.8	9.6	12.8	13.6	12.2	10.0	8.0	4.3	13.2	4.0	10.8	11.3	15.7	9.9	10.7	6.4
Pankreas (C25) <i>Pancreas</i>	8.1	9.4	8.9	6.0	7.6	10.9	11.9	5.3	7.8	7.2	10.3	5.2	10.8	5.9	5.3	6.8	5.5	2.5	12.3
Jetra (C22) <i>Liver</i>	6.3	5.7	6.4	6.7	7.7	4.8	5.9	4.3	5.4	3.6	6.5	8.5	1.4	7.7	9.7	5.5	8.0	7.9	9.6
Mokraćna bešika (C67) <i>Bladder</i>	5.3	5.9	4.5	6.2	8.3	5.8	4.6	4.6	6.0	6.0	5.5	6.7	4.6	1.3	2.2	5.4	3.7	4.5	5.4
Larinks (C32) <i>Larynx</i>	6.1	4.8	5.5	10.0	3.6	6.9	5.4	6.7	7.7	5.8	5.8	8.4	4.5	5.8	9.6	3.5	8.7	5.0	1.3
Mozak (C71) <i>Brain</i>	6.4	7.9	8.9	3.5	8.5	5.4	4.7	9.5	6.5	4.5	6.5	4.9	5.6	6.8	4.3	3.1	6.3	3.1	6.5
Leukemije(C91-C95) <i>Leukaemias</i>	5.2	5.4	2.2	5.9	4.4	6.5	8.8	7.3	6.4	5.6	7.1	3.6	1.9	4.7	5.3	2.5	1.9	5.8	3.7
Druge lokalizacije <i>Other sites</i>	37.1	39.7	38.1	42.7	32.0	36.7	39.9	33.4	36.4	36.6	35.9	41.0	31.2	28.4	37.8	32.5	38.5	26.0	33.7
Sve lokalizacije (C00-C97) <i>All sites</i>	169.5	183.5	179.5	182.6	158.8	170.9	178.7	161.1	172.2	173.5	174.7	188.1	137.5	150.8	158.6	130.7	159.6	119.0	143.5
Sve lokalizacije bez kože (C44) <i>All sites but skin (C44)</i>	168.5	182.7	178.6	181.4	156.6	170.6	178.0	160.8	169.9	173.2	174.7	187.1	137.2	148.6	157.3	129.0	157.3	118.5	143.0

**Tabela 16. Standardizovane stope mortaliteta od raka na 100.000 stanovnika prema vodećim lokalizacijama i okruzima, žene, centralna Srbija, 2009. godina**

*Table 16. Standardized cancer mortality rates per 100.000 population by leading primary sites, females, regions in Central Serbia, 2009*

Primarne lokalizacije (10-MKB) Primary sites (ICD-10)	centralna Srbija	O k r u g ( R e g i o n )																	
		Grad Beograd	Kolubarski	Mačvanski	Raški	Moravički	Zlatiborski	Rasinski	Šumadijski	Pomoravski	Bраниčevski	Podunavski	Zaječarski	Borski	Nišavski	Pčinjski	Jablanički	Toplički	Pirotski
Dojka (C50) <i>Breast</i>	20.3	24.7	15.7	17.7	21.5	22.4	17.4	14.7	18.7	20.0	14.5	19.9	19.7	19.0	22.7	12.9	19.1	13.3	11.3
Pluća i bronh (C34) <i>Lung and bronchus</i>	16.0	21.4	16.1	11.4	11.5	15.0	12.5	8.9	18.4	19.2	13.9	19.9	14.7	8.4	13.1	17.1	8.4	14.0	7.3
Kolon i rektum (C18-C20) <i>Colon and rectum</i>	11.0	12.5	15.5	12.9	10.9	6.0	11.6	7.5	9.6	11.2	7.3	10.7	11.3	8.1	10.9	11.4	8.7	10.3	8.4
Grič materice (C53) <i>Cervix uteri</i>	6.9	6.7	9.4	7.1	8.1	8.0	8.5	3.5	7.5	9.8	6.6	4.9	8.8	5.9	7.3	4.9	4.6	6.8	6.8
Pankreas (C25) <i>Pancreas</i>	5.2	6.0	8.4	3.5	4.2	3.4	5.8	5.4	5.8	7.5	3.9	4.5	4.2	1.9	5.0	3.6	4.4	2.8	4.3
Želudac (C16) <i>Stomach</i>	4.9	3.7	8.0	8.9	3.9	6.5	3.3	6.0	5.1	2.8	3.4	8.1	4.8	3.0	3.8	11.0	6.3	0.6	7.1
Ovarijum (C56) <i>Ovary</i>	5.5	5.9	4.6	3.9	7.2	4.5	4.0	6.6	8.7	4.8	2.6	6.7	5.6	7.4	5.4	3.7	4.7	1.2	6.1
Jetra (C22) <i>Liver</i>	3.6	2.0	3.6	5.4	7.3	2.4	3.9	3.9	1.9	1.9	1.4	3.6	4.3	3.7	6.5	5.4	4.8	2.9	5.6
Mozak (C71) <i>Brain</i>	4.8	5.9	5.7	6.1	6.7	6.0	4.9	4.9	3.5	4.9	2.1	2.7	6.2	3.5	2.0	3.0	5.5	1.7	5.3
Leukemije(C91-C95) <i>Leukaemias</i>	3.1	3.0	3.1	3.6	2.0	2.6	2.9	2.5	2.8	5.8	5.2	2.1	3.0	2.6	3.3	4.9	3.8	0.0	3.1
Druge lokalizacije <i>Other sites</i>	28.3	31.7	24.2	35.2	23.8	36.4	25.3	24.1	26.7	27.5	19.9	20.6	24.8	20.5	31.5	30.2	26.0	23.9	25.1
Sve lokalizacije (C00-C97) <i>All sites</i>	109.5	123.6	114.3	115.7	107.1	113.2	100.0	88.2	108.7	115.4	80.8	103.7	107.3	84.1	111.7	108.0	96.4	77.5	90.4
Sve lokalizacije bez kože (C44) <i>All sites but skin (C44)</i>	108.9	123.0	113.6	115.1	106.2	112.5	99.5	87.9	108.1	114.8	80.5	103.5	106.8	84.1	111.4	106.1	95.3	76.7	90.4



Tabela 17. Ukupan broj novoobolelih i broj novoobolelih od raka sa procentom registrovanih samo na osnovu prijave smrti, prema primarnoj lokalizaciji i polu, centralna Srbija, 2009. godina

Table 17. Total number of new cancer cases and number and percentage of cases registered from death certificates only, by primary site and sex, Central Serbia, 2009

MKB-10 (ICD-10) Šifra (Code) Ukupno (All)	Primarna lokalizacija Primary site	POL SEX		Ukupno (All) 14012	Broj registrovanih samo na osnovu prijave smrti Number of cases registered from death certificates only		%
		M (Male)	Z (Female)		655	506	
C00	Usna <i>Lip</i>	M	90	2	2.2%		
		Ž	28	-	0.0%		
C01	Jezik, koren <i>Base of tongue</i>	M	22	-	0.0%		
		Ž	3	-	0.0%		
C02	Jezik, drugi delovi <i>Tongue, other &amp; unspecified parts</i>	M	50	-	0.0%		
		Z	13	-	0.0%		
C03	Desni <i>Gum</i>	M	16	-	0.0%		
		Z	4	-	0.0%		
C04	Pod usta <i>Floor of mouth</i>	M	47	1	2.1%		
		Z	22	-	0.0%		
C05	Nepce <i>Palate</i>	M	14	1	7.1%		
		Ž	6	-	0.0%		
C06	Usta, drugi delovi <i>Mouth, other &amp; unspecified parts</i>	M	10	-	0.0%		
		Z	26	-	0.0%		
C07	Parotidna žlezda <i>Parotid gland</i>	M	15	1	6.7%		
		Z	16	-	0.0%		
C08	Piljuvačna žlezda <i>Other &amp; unspec. major salivary gl.</i>	M	10	-	0.0%		
		Z	14	-	0.0%		
C09	Krajnik <i>Tonsil</i>	M	31	-	0.0%		
		Z	9	1	11.1%		
C10	Orofarings <i>Oropharynx</i>	M	36	-	0.0%		
		Z	22	-	0.0%		
C11	Nasofarings <i>Nasopharynx</i>	M	52	2	3.8%		
		Ž	15	-	0.0%		
C12	Piriformni sinus <i>Pyiform sinus</i>	M	2	-	0.0%		
		Z	1	-	0.0%		
C13	Hipofarings <i>Hypopharynx</i>	M	100	1	1.0%		
		Z	13	1	7.7%		
C14	Usne, usta, ždrelo, drugi delovi <i>Other and ill def. sites in the lip, oral cavity &amp; pharynx</i>	M	17	-	0.0%		
		Z	9	-	0.0%		
C15	Jednjak <i>Oesophagus</i>	M	176	7	4.0%		
		Ž	32	3	9.4%		
C16	Zeludac <i>Stomach</i>	M	536	37	6.9%		
		Ž	284	25	8.8%		
C17	Tanko crevo <i>Small intestine</i>	M	25	-	0.0%		
		Ž	18	-	5.6%		
C18	Debelo crevo <i>Colon</i>	M	946	52	5.5%		
		Z	600	16	2.7%		
C19	Rektosigmoidni prelaz <i>Rectosigmoid junction</i>	M	111	10	9.0%		
		Z	72	3	4.2%		
C20	Rektum <i>Rectum</i>	M	636	29	4.6%		
		Ž	385	20	5.2%		
C21	Anus i analni kanal <i>Anus &amp; anal canal</i>	M	14	-	0.0%		
		Ž	13	-	0.0%		
C22	Jetra, žučni kanali <i>Liver &amp; intrahepatic bile ducts</i>	M	256	33	12.9%		
		Z	191	18	9.4%		
C23	Zučna kesa <i>Gallbladder</i>	M	42	3	7.1%		
		Z	76	4	5.3%		
C24	Zučni kanali, drugi delovi <i>Biliary tract, other &amp; unspec. parts</i>	M	17	2	11.8%		
		Ž	29	1	3.4%		
C25	Pankreas <i>Pancreas</i>	M	312	31	9.9%		
		Ž	258	24	9.3%		
C26	Org. za var., ned. odred. lok. <i>Other &amp; ill-defined digestive organs</i>	M	26	2	7.7%		
		Z	27	1	3.7%		
C30	Nosna šupljina i srednje uvo <i>Nasal cavity &amp; middle ear</i>	M	17	-	0.0%		
		Ž	14	1	7.1%		
C31	Nosni sinusi <i>Accessory sinuses</i>	M	24	1	4.2%		
		Z	7	-	0.0%		
C32	Larings <i>Larynx</i>	M	506	8	1.6%		
		Z	54	2	3.7%		
C33	Traheja <i>Trachea</i>	M	10	-	0.0%		
		Z	5	-	0.0%		
C34	Bronh i pluća <i>Bronchus &amp; lung</i>	M	3183	284	8.9%		
		Ž	975	107	11.0%		
C37	Timus <i>Thymus</i>	M	4	-	0.0%		
		Ž	4	-	0.0%		
C38	Srce, mediastinum, pleura <i>Heart, mediastinum &amp; pleura</i>	M	41	2	4.9%		
		Z	18	1	5.6%		
C39	Toraks, druge lokalizacije <i>Other &amp; ill-def. in the res.sys.</i>	M	5	-	0.0%		
		Z	5	-	0.0%		
C40	Kosti i zglob. hrskavice udova <i>Bone &amp; articular cartilage of limbs</i>	M	60	-	0.0%		
		Ž	50	-	0.0%		
C41	Kosti i zglob. hrskav., dr. lok. <i>Bone &amp; articular cartilage of other</i>	M	44	4	9.1%		
		Ž	29	5	17.2%		
C43	Koža, maligni melanom <i>Malignant melanoma of skin</i>	M	241	2	0.8%		
		Z	212	1	0.5%		
C44	Koža, drugi mal. tumori <i>Skin, other malignomas</i>	M	1679	3	0.2%		
		Z	1506	2	0.1%		
C45	Mezoteliom <i>Mesothelioma</i>	M	13	-	0.0%		
		Z	4	-	0.0%		
C46	Kaposijev sarkom <i>Kaposi's sarcoma</i>	M	6	-	0.0%		
		Ž	2	-	0.0%		
C47	Periferni nervi i aut. ner. sis. <i>Peripheral nerves &amp; auton. nerv. sys.</i>	M	4	-	0.0%		
		Z	8	-	0.0%		
C48	Peritoneum i retroperitoneum <i>Retroperitoneum &amp; peritoneum</i>	M	26	2	7.7%		
		Z	41	2	4.9%		
C49	Veživna i meka tkiva, drugi <i>Other connective and soft tissue</i>	M	89	1	1.1%		
		Z	91	1	1.1%		
C50	Dojka <i>Breast</i>	M	54	2	3.7%		
		Z	3307	108	3.3%		

Tabela 17.1 Ukupan broj novoobolelih i broj novoobolelih od raka sa procentom registrovanih samo na osnovu prijave smrti, prema primarnoj lokalizaciji i polu, centralna Srbija, 2009. godina (nastavak)

Table 17.1 Total number of new cancer cases and number and percentage of cases registered from death certificates only, by primary site and sex, Central Serbia, 2009 (continued)

MKB-10 (ICD-10) Šifra (Code) Ukupno (All)	Primarna lokalizacija Primary site	POL SEX M (Male) Ž (Female)	Ukupno (All) 14012 12651	Broj registrovanih samo na osnovu prijave smrti Number of cases registered from death certificates only		%
				655	4.7%	
C51	Vulva <i>Vulva</i>	Ž	87	4	4.6%	
C52	Vagina <i>Vagina</i>	Ž	16	1	6.3%	
C53	Grič materice <i>Cervix uteri</i>	Ž	1104	6	0.5%	
C54	Materica, telo <i>Corpus uteri</i>	Ž	719	3	0.4%	
C55	Materica, neoznačeni deo <i>Uterus, unspecified part</i>	Ž	27	6	22.2%	
C56	Jajnik <i>Ovary</i>	Ž	430	11	2.6%	
C57	Zenski gen.org., dr. neoz. lok. <i>Other &amp; unspec.parts of fem. gen.org.</i>	Ž	18	-	0.0%	
C58	Placenta <i>Placenta</i>	Ž	1	-	0.0%	
C60	Penis <i>Penis</i>	M	34	1	2.9%	
C61	Prostata <i>Prostate</i>	M	1673	52	3.1%	
C62	Testis <i>Testis</i>	M	186	3	1.6%	
C63	Muški gen. org., dr. neoz. org. <i>Other &amp; unspec. male genital organs</i>	M	5	-	0.0%	
C64	Bubreg <i>Kidney, except renal pelvis</i>	M	260	8	3.1%	
C65	Bubrežna karlica <i>Renal pelvis</i>	Ž	167	9	5.4%	
C66	Ureter <i>Ureter</i>	M	17	-	0.0%	
C67	Mokraćna bešika <i>Bladder</i>	Ž	21	-	0.0%	
C68	Ureter <i>Ureter</i>	M	11	1	9.1%	
C69	Mokraćna bešika <i>Bladder</i>	Ž	10	-	0.0%	
C68	Urinarni organi, dr. neoz. org. <i>Other &amp; unspecified urinary organs</i>	M	789	19	2.4%	
C69	Okno, pripoji oka <i>Eye and adnexa</i>	Ž	261	5	1.9%	
C70	Moždanice <i>Meninges</i>	M	4	-	0.0%	
C71	Mozak <i>Brain</i>	Ž	6	-	0.0%	
C71	Mozak <i>Brain</i>	M	14	-	0.0%	
C72	Centralni ner. sis., dr. delovi <i>Spinal cord, cran. nerv. &amp; oth. parts of CNS</i>	Ž	13	-	0.0%	
C72	Centralni ner. sis., dr. delovi <i>Spinal cord, cran. nerv. &amp; oth. parts of CNS</i>	M	305	5	1.6%	
C73	Štitasta žlezda <i>Thyroid gland</i>	Ž	253	6	2.4%	
C74	Nadbubrežna žlezda <i>Adrenal gland</i>	M	18	2	11.1%	
C75	Endokrine žlezde, druge <i>Other endocrine glands &amp; related structures</i>	Ž	7	1	14.3%	
C76	Ostale lokalizacije <i>Other &amp; ill defined sites</i>	M	42	-	0.0%	
C77-C80	Sekundarne lok., bez ozn. lok. <i>Unspec.mal.neo. of lymph nod. &amp; without of spec. of site</i>	Ž	160	3	1.9%	
C81	Hodgkinova bolest <i>Hodgkin's disease</i>	M	17	1	5.9%	
C82	Ne-Hodgkinov lim., folikularni <i>Follicular non-Hodgkin's lymphoma</i>	Ž	15	1	6.7%	
C83	Ne-Hodgkinov lim., difuzni <i>Diffuse non-Hodgkin's lymphoma</i>	M	7	-	0.0%	
C84	Periferni i kožni lim. T-ćelija <i>Peripheral &amp; cutaneous T-cell lymphomas</i>	Ž	5	-	0.0%	
C85	Ne-Hodgkinovi limfomi, drugi <i>Other &amp; unspecified types of non-Hodgkin's lymphoma</i>	M	61	8	13.1%	
C88	Zloćudne imunoprolifer. bolesti <i>Malignant immunoproliferative diseases</i>	Ž	51	19	37.3%	
C90	Mult. mijelom i zloć. tum. plaz. ćel. <i>Multiple myeloma and malignant plasma cell neoplasms</i>	M	311	12	3.9%	
C91	Limfoidna leukemija <i>Lymphoblastic, lymphoid leukaemia</i>	Ž	241	16	6.6%	
C92	Mijeloidna leukemija <i>Myeloid leukaemia</i>	M	72	2	2.8%	
C93	Monocitna leukemija <i>Monocytic leukaemia</i>	Ž	58	-	0.0%	
C94	Leukemije, druge <i>Other leukaemias of specified cells</i>	M	52	1	1.9%	
C95	Leukemije, neoznačene <i>Leukaemia, unspecified cell type</i>	Ž	58	-	0.0%	
C96	Dr. zloć. tum. hematop. sist. <i>Oth.&amp;unspec.mal.neo. of lymph.,haematopoietic &amp; related tissue</i>	M	100	3	3.0%	
C00-C96 (C44)	Sve lokalizacije, bez kože <i>All sites but skin</i>	Ž	76	-	0.0%	
C00-C96 (C44)	Sve lokalizacije, bez kože <i>All sites but skin</i>	M	73	3	4.1%	
C00-C96 (C44)	Sve lokalizacije, bez kože <i>All sites but skin</i>	M	7	-	0.0%	
C00-C96 (C44)	Sve lokalizacije, bez kože <i>All sites but skin</i>	Ž	4	-	0.0%	
C00-C96 (C44)	Sve lokalizacije, bez kože <i>All sites but skin</i>	M	77	1	1.3%	
C00-C96 (C44)	Sve lokalizacije, bez kože <i>All sites but skin</i>	Ž	68	1	1.5%	
C00-C96 (C44)	Sve lokalizacije, bez kože <i>All sites but skin</i>	M	115	1	0.9%	
C00-C96 (C44)	Sve lokalizacije, bez kože <i>All sites but skin</i>	Ž	75	1	1.3%	
C00-C96 (C44)	Sve lokalizacije, bez kože <i>All sites but skin</i>	M	87	1	1.1%	
C00-C96 (C44)	Sve lokalizacije, bez kože <i>All sites but skin</i>	Ž	57	1	1.8%	
C00-C96 (C44)	Sve lokalizacije, bez kože <i>All sites but skin</i>	M	8	-	0.0%	
C00-C96 (C44)	Sve lokalizacije, bez kože <i>All sites but skin</i>	Ž	3	-	0.0%	
C00-C96 (C44)	Sve lokalizacije, bez kože <i>All sites but skin</i>	M	4	1	25.0%	
C00-C96 (C44)	Sve lokalizacije, bez kože <i>All sites but skin</i>	Ž	1	-	0.0%	
C00-C96 (C44)	Sve lokalizacije, bez kože <i>All sites but skin</i>	M	19	4	21.1%	
C00-C96 (C44)	Sve lokalizacije, bez kože <i>All sites but skin</i>	Ž	12	4	33.3%	
C00-C96 (C44)	Sve lokalizacije, bez kože <i>All sites but skin</i>	M	0	-	0.0%	
C00-C96 (C44)	Sve lokalizacije, bez kože <i>All sites but skin</i>	Ž	2	-	0.0%	
C00-C96 (C44)	Sve lokalizacije, bez kože <i>All sites but skin</i>	M	12333	652	5.3%	
C00-C96 (C44)	Sve lokalizacije, bez kože <i>All sites but skin</i>	Ž	11145	504	4.5%	

Tabela 18. Broj novoobolelih slučajeva od raka, prema primarnoj lokalizaciji (MKB-10), uzrastu i polu, centralna Srbija, 2009. godina

Table 18. Number of new cancer cases by primary site (ICD-10), age and sex, Central Serbia, 2009

MKB-10 (ICD-10)	Primarna lokalizacija Primary site	POL SEX	Ukupno (All)	U Z R A S T (A g e)															% 100%		
				0-4	5-9	10-14	15-19	20-24	25-29	30-34	35-39	40-44	45-49	50-54	55-59	60-64	65-69	70-74		75+	
Šifra (Code)		M (Male)	14012	24	27	35	42	68	98	143	168	259	542	1153	1971	1971	2013	2381	3117		
Ukupno (All)		Ž (Female)	12651	23	18	14	42	49	102	206	341	563	864	1326	1832	1624	1475	1660	2512		
C00	Usna <i>Lip</i>	M Ž	90 28	-	-	-	-	-	-	-	2	2	3	8	10	10	11	19	25	0.6%	
C01	Jezik, koren <i>Base of tongue</i>	M Ž	22 3	-	-	-	-	-	-	-	-	-	-	2	5	5	1	3	4	2	0.2%
C02	Jezik, drugi delovi <i>Tongue, other &amp; unspecified parts</i>	M Ž	50 13	-	-	-	-	-	-	-	-	-	4	9	16	8	3	7	3	0.4%	
C03	Desni <i>Gum</i>	M Ž	16 4	-	-	-	-	-	-	-	1	1	-	-	6	5	2	2	-	0.1%	
C04	Pod usta <i>Floor of mouth</i>	M Ž	47 22	-	-	-	-	-	1	-	-	-	-	3	-	4	6	2	6	0.2%	
C05	Nepce <i>Palate</i>	M Ž	14 6	-	-	-	-	-	1	-	-	-	4	1	2	4	-	-	2	0.1%	
C06	Usta, drugi delovi <i>Mouth, other &amp; unspecified parts</i>	M Ž	10 26	-	-	-	-	1	-	2	6	3	4	3	1	-	-	1	5	0.2%	
C07	Parotidna žlezda <i>Parotid gland</i>	M Ž	15 16	-	1	-	-	1	-	-	-	1	-	1	2	2	2	3	4	0.1%	
C08	Pljučna žlezda <i>Other &amp; unspec. major salivary gl.</i>	M Ž	10 14	-	-	-	-	-	-	-	-	-	1	-	2	-	3	-	4	0.1%	
C09	Krajnik <i>Tonsil</i>	M Ž	31 9	-	-	-	-	-	-	-	-	-	2	3	7	3	7	1	8	0.2%	
C10	Orofarinjski <i>Oropharynx</i>	M Ž	36 22	-	-	-	-	-	-	-	-	1	2	5	10	10	5	1	2	0.3%	
C11	Nasofarinjski <i>Nasopharynx</i>	M Ž	52 15	-	-	-	-	5	2	-	-	9	13	9	8	1	2	3	3	0.4%	
C12	Piriformni sinus <i>Pyriform sinus</i>	M Ž	2 1	-	-	-	-	-	-	-	-	-	-	-	1	-	-	-	-	0.0%	
C13	Hipofarinjski <i>Hypopharynx</i>	M Ž	100 13	-	-	-	-	-	-	2	-	-	9	12	28	16	17	6	9	0.7%	
C14	Usne, usta, ždrelo, drugi delovi <i>Other and ill def. sites in the lip, oral cav &amp; phar</i>	M Ž	17 9	-	-	-	-	-	-	-	-	2	2	2	4	-	-	1	6	0.1%	
C15	Jednjak <i>Oesophagus</i>	M Ž	176 32	-	-	-	-	1	1	-	3	1	18	19	36	35	20	18	24	1.3%	
C16	Želudac <i>Stomach</i>	M Ž	536 284	-	-	-	-	-	2	3	4	9	22	52	59	51	86	103	145	3.8%	
C17	Tanki crevo <i>Small intestine</i>	M Ž	25 18	-	-	-	-	-	-	1	-	2	2	2	3	3	3	3	6	0.2%	
C18	Debeli crevo <i>Colon</i>	M Ž	946 600	-	-	-	-	1	1	3	9	17	25	79	136	138	154	205	178	6.8%	
C19	Rektosigmoidni prelaz <i>Rectosigmoid junction</i>	M Ž	111 72	-	-	-	-	-	1	1	2	-	6	7	9	14	27	20	24	0.8%	
C20	Rektum <i>Rectum</i>	M Ž	636 385	-	-	-	-	-	3	8	3	18	17	55	88	96	93	105	150	4.5%	
C21	Anus i analni kanal <i>Anus &amp; anal canal</i>	M Ž	14 13	-	-	-	-	-	-	-	-	-	-	1	4	2	1	3	3	0.1%	
C22	Jetra, žučni kanali <i>Liver &amp; intrahepatic bile ducts</i>	M Ž	256 191	-	-	-	-	1	-	2	2	8	18	30	34	38	41	82	1.8%		
C23	Žučna kesa <i>Gallbladder</i>	M Ž	42 76	-	-	-	-	-	-	-	-	-	1	3	2	7	4	10	15	0.3%	
C24	Žučni kanali, drugi delovi <i>Biliary tract, other &amp; unspec. parts</i>	M Ž	17 29	-	-	-	-	-	-	-	-	-	1	3	2	3	2	6	0.1%		
C25	Pankreas <i>Pancreas</i>	M Ž	312 258	-	-	-	-	1	-	1	1	9	14	28	51	45	49	40	73	2.2%	
C26	Org. za var., ned. odred. lok. <i>Other &amp; ill-def. in the res. sys.</i>	M Ž	26 27	-	-	-	-	-	1	1	3	6	11	18	11	26	36	28	47	8.0%	
C30	Nosna šupljina i srednje uvo <i>Nasal cavity &amp; middle ear</i>	M Ž	17 14	-	-	-	-	-	-	-	-	-	-	4	2	2	2	3	4	0.1%	
C31	Nosni sinusi <i>Accessory sinuses</i>	M Ž	24 7	-	-	-	-	-	-	-	-	-	-	8	5	-	3	7	1	0.2%	
C32	Larings <i>Larynx</i>	M Ž	506 54	-	-	-	-	-	1	3	14	35	70	107	88	71	64	53	3.6%		
C33	Traheja <i>Trachea</i>	M Ž	10 5	-	-	-	-	-	-	-	-	-	-	4	4	-	1	1	1	0.1%	
C34	Bronh i pluća <i>Bronchus &amp; lung</i>	M Ž	3183 975	-	-	-	-	-	3	10	22	44	131	354	610	558	494	485	472	22.7%	
C37	Timus <i>Thymus</i>	M Ž	4 4	-	-	-	-	-	-	1	-	-	-	-	1	-	-	1	1	0.0%	
C38	Srce, mediastinum, pleura <i>Heart, mediastinum &amp; pleura</i>	M Ž	41 18	-	-	-	-	-	-	2	-	1	3	3	9	4	4	8	7	0.3%	
C39	Toraks, druge lokalizacije <i>Other &amp; ill-def. in the res. sys.</i>	M Ž	5 5	-	-	-	1	-	-	-	-	-	-	-	-	2	1	-	1	0.0%	
C40	Kosti i zglobovi, hrskavice udova <i>Bone &amp; articular cartilage of limbs</i>	M Ž	60 50	-	9	13	11	4	1	1	1	1	3	2	3	3	1	3	4	0.4%	
C41	Kosti i zglobovi, hrskav., dr. lok. <i>Bone &amp; articular cartilage of other</i>	M Ž	44 29	-	1	-	2	2	2	-	1	-	2	4	7	6	3	7	7	0.3%	
C43	Koža, maligni melanomi <i>Malignant melanoma of skin</i>	M Ž	241 212	-	-	-	-	2	1	7	4	11	17	21	42	29	37	28	42	1.7%	
C44	Koža, drugi maligni tumori <i>Skin, other malignomas</i>	M Ž	1679 1506	-	-	1	3	7	8	12	17	26	45	77	159	215	246	331	532	12.0%	
C45	Mezoteliom <i>Mesothelioma</i>	M Ž	13 4	-	-	-	-	-	1	-	-	-	-	-	2	-	4	4	2	0.1%	
C46	Kaposijev sarkom <i>Kaposi's sarcoma</i>	M Ž	6 2	-	-	-	-	-	-	-	-	-	-	1	-	1	1	1	2	0.0%	
C47	Periferi nervi i aut. ner. sis. <i>Peripheral nerves &amp; auton. nerv. sys.</i>	M Ž	4 8	-	-	-	-	1	-	1	1	-	1	1	-	2	-	1	-	0.1%	
C48	Peritoneum i retroperitoneum <i>Retroperitoneum &amp; peritoneum</i>	M Ž	26 41	1	1	-	-	-	-	1	4	-	3	3	1	2	2	4	6	0.2%	
C49	Veživna i meka tkiva, drugi <i>Other connective and soft tissue</i>	M Ž	89 91	-	-	1	1	1	2	3	4	8	4	8	15	20	6	5	8	13	0.7%
C50	Dojka <i>Breast</i>	M Ž	54 3307	-	-	-	-	3	24	45	92	198	304	430	620	481	370	312	428	26.1%	

Tabela 18.1 Broj novoobolelih slučajeva od raka, prema primarnoj lokalizaciji (MKB-10), uzrastu i polu, centralna Srbija,2009.godina (nastavak)

Table 18.1 Number of new cancer cases by primary site (ICD-10), age and sex, Central Serbia, 2009 (continued)

MKB-10 (ICD-10)	Primarna lokalizacija Primary site	POL SEX	Ukupno (All)	U Z R A S T (A g e)																	%
Šifra (Code)		M (Male)	14012	0-4	5-9	10-14	15-19	20-24	25-29	30-34	35-39	40-44	45-49	50-54	55-59	60-64	65-69	70-74	75+	100%	
Ukupno (All)		Ž (Female)	12651	23	18	14	42	49	102	206	341	563	864	1326	1832	1624	1475	1660	2512		
C51	Vulva Vulva	Ž	87	-	-	-	-	-	-	2	4	1	4	4	9	5	11	6	41	0.7%	
C52	Vagina Vagina	Ž	16	-	-	-	-	-	1	1	-	1	2	-	3	1	3	2	2	0.1%	
C53	Grlić materice Cervix uteri	Ž	1104	-	-	-	-	2	14	49	84	123	141	155	171	116	77	75	97	8.7%	
C54	Materica, telo Corpus uteri	Ž	719	-	-	-	-	1	1	6	11	19	35	97	141	123	93	90	102	5.7%	
C55	Materica, neoznačeni deo Uterus, unspecified part	Ž	27	-	-	-	-	-	-	1	-	1	2	2	5	5	2	2	7	0.2%	
C56	Jajnik Ovary	Ž	430	-	-	-	5	4	8	8	14	23	30	60	63	65	42	52	56	3.4%	
C57	Ženski gen.org., dr. neoz. lok. Other & unspec.parts of fem. gen.org.	Ž	18	-	-	-	-	-	-	1	-	-	1	1	3	1	1	3	7	0.1%	
C58	Placenta Placenta	Ž	1	-	-	-	-	-	-	-	-	-	-	1	-	-	-	-	-	0.0%	
C60	Penis Penis	M	34	-	-	1	-	-	-	-	-	-	2	5	4	3	5	6	8	0.2%	
C61	Prostata Prostate	M	1673	-	-	-	-	-	-	-	2	-	5	23	115	169	268	428	663	11.9%	
C62	Testis Testis	M	186	-	1	1	1	23	37	45	23	19	7	10	9	1	4	3	2	1.3%	
C63	Muški gen. org., dr. neoz. org. Other & unspec. male genital organs	M	5	-	-	-	-	1	-	-	-	-	-	2	-	-	1	-	1	0.0%	
C64	Bubreg Kidney, except renal pelvis	M	260	-	-	-	-	-	-	3	5	5	18	28	54	41	32	38	36	1.9%	
C65	Bubrežna karlica Renal pelvis	M	17	-	-	-	-	-	-	2	5	8	8	12	17	18	21	31	44	1.3%	
C66	Ureter Ureter	M	11	-	-	-	-	-	-	-	-	-	2	1	1	2	1	3	2	0.1%	
C67	Mokraćna bešika Bladder	M	789	-	-	-	-	-	5	5	8	15	31	46	103	109	117	136	214	5.6%	
C68	Urinarni organi, dr. neoz. org. Other & unspec. urinary organs	M	4	-	-	-	-	-	1	-	-	-	-	-	-	-	2	1	3	0.0%	
C69	Oko, pripoji oka Eye and adnexa	M	29	-	-	-	-	-	1	-	1	1	2	-	3	8	2	2	9	0.2%	
C70	Moždanice Meninges	M	14	-	2	-	-	1	1	-	-	1	1	2	2	1	1	1	1	0.1%	
C71	Mozak Brain	M	305	2	5	6	11	2	4	6	7	13	24	29	37	47	39	37	36	2.2%	
C72	Centralni ner. sis., dr. delovi Spinal cord, cran. nerv. & oth. parts of CNS	M	18	-	-	4	-	-	1	-	1	-	1	1	-	3	1	3	-	0.1%	
C73	Štitasta žlezda Thyroid gland	M	42	-	-	2	-	4	-	3	1	1	3	11	5	4	5	3	3	0.3%	
C74	Nadbubrežna žlezda Adrenal gland	M	17	3	-	-	-	-	-	1	-	-	1	1	2	2	2	3	2	0.1%	
C75	Endokrine žlezde, druge Other endocrine glands & related structures	M	7	-	-	1	2	-	-	-	-	-	-	1	-	-	2	1	-	0.0%	
C76	Ostale lokalizacije Other & ill defined sites	M	61	1	-	-	-	-	-	1	-	-	2	6	12	9	9	6	15	0.4%	
C77-C80	Sekundarne lok., bez ozn. lok. Unspec. lym.nod.neop.&without of spec.of site	M	311	6	-	2	4	5	3	8	5	6	38	46	47	44	44	53	57	2.2%	
C81	Hodgkinova bolest Hodgkin's disease	M	72	-	1	1	3	3	7	4	8	10	4	10	5	3	2	3	8	0.5%	
C82	Ne-Hodgkinov lim., folikularni Follicular non-Hodgkin's lymphoma	M	52	-	1	-	-	1	-	1	1	2	3	7	5	11	5	6	9	0.4%	
C83	Ne-Hodgkinov lim., difuzni Diffuse non-Hodgkin's lymphoma	M	100	2	-	-	-	-	5	2	7	3	10	14	13	8	16	20	7	0.7%	
C84	Periferni i kožni lim. T-ćelija Peripheral & cutaneous T-cell lymphoma	M	8	-	-	-	-	-	-	1	-	3	-	-	2	-	1	1	1	0.1%	
C85	Ne-Hodgkinovi limfomi, drugi Other & unspec. types of non-Hodgkin's lymphoma	M	65	-	2	-	1	-	2	3	2	3	1	5	6	10	3	14	13	0.5%	
C88	Zloćudne imunoprolifer. bolesti Malignant immunoproliferative diseases	M	7	-	-	-	-	-	-	-	-	-	-	1	1	-	2	3	-	0.0%	
C90	Mult. mijelom i zloć. tum. plaz. ćel. Mult.myeloma and mal.plasma cell neo.	M	77	-	-	-	-	-	-	2	3	6	8	5	13	12	13	15	-	0.5%	
C91	Limfoidna leukemija Lymphoblastic, lymphoid leukaemia	M	115	7	4	4	3	1	1	-	-	2	2	8	12	16	7	29	19	0.8%	
C92	Mijeloidna leukemija Myeloid leukaemia	M	87	-	1	2	1	1	1	3	3	4	8	11	11	10	9	11	11	0.6%	
C93	Monocitna leukemija Monocytic leukaemia	M	8	-	-	-	-	-	-	1	-	-	-	-	2	1	-	4	-	0.1%	
C94	Leukemije, druge Other leukaemias of specified cells	M	4	-	-	-	-	-	-	-	-	1	-	-	-	1	-	2	-	0.0%	
C95	Leukemije, neoznačene Leukaemia, unspecified cell type	M	19	2	-	-	-	-	-	2	-	1	2	2	-	2	4	4	-	0.1%	
C96	Dr. zloć. tum. hematop. sist. Other&unsp.mal.neo.of lym.,haem.& tissue	M	0	-	-	-	-	-	-	-	-	-	-	-	-	-	-	-	-	0.0%	
C00-C96	Sve lokalizacije, bez kože All sites but skin	M	12333	24	27	34	39	61	90	131	151	233	497	1076	1812	1756	1767	2050	2585	88.0%	
(C44)		Ž	11145	23	18	13	41	47	96	187	319	537	813	1234	1714	1469	1254	1376	2004	88.1%	

Tabela 19. Incidencija od raka na 100.000 stanovnika prema primarnoj lokalizaciji (MKB-10), uzrastu i polu, centralna Srbija, 2009. godina

Table 19. Cancer incidence rates per 100.000 population by primary site (ICD-10), age and sex, Central Serbia, 2009

MKB-10 (ICD-10) Šifra (Code) Ukupno (All)	Primarna lokalizacija Primary site	POL SEX	Sirova inc. CR	0-4	5-9	10-14	15-19	20-24	25-29	30-34	35-39	40-44	45-49	50-54	55-59	60-64	65-69	70-74	75+	Stand. inc. ASR
		M (Male) Ž (Female)																		
C00	Usna Lip	M Ž	3.5 1.0	-	-	-	-	-	-	1.1	1.2	1.7	4.1	4.8	6.9	9.3	16.2	15.1	1.8	
C01	Jezik, koren Base of tongue	M Ž	0.8 0.1	-	-	-	-	-	-	-	-	1.1	2.6	2.4	0.7	2.5	3.4	1.2	0.5	
C02	Jezik, drugi delovi Tongue, other & unspecified parts	M Ž	1.9 0.5	-	-	-	-	-	-	-	0.6	0.5	0.5	2.3	0.6	0.6	2.7	6.0	1.8	1.1
C03	Desni Gum	M Ž	0.6 0.1	-	-	-	-	-	-	0.6	0.6	-	-	-	2.9	3.4	1.7	1.7	-	0.4
C04	Pod usta Floor of mouth	M Ž	1.8 0.8	-	-	-	-	-	0.5	-	0.6	-	2.3	1.5	2.4	4.2	1.3	2.5	0.4	1.1
C05	Nepce Palate	M Ž	0.5 0.2	-	-	-	-	-	0.5	-	-	-	2.3	0.5	1.0	2.7	-	-	-	1.2
C06	Usta, drugi delovi Mouth, other & unspecified parts	M Ž	0.4 0.9	-	-	-	-	0.6	-	1.1	3.3	1.7	2.2	1.5	0.5	-	0.8	3.4	1.2	0.2
C07	Parotidna žlezda Parotid gland	M Ž	0.6 0.6	-	0.7	-	-	0.6	-	-	-	0.6	-	-	0.5	0.9	1.2	1.4	2.0	0.3
C08	Pjivačna žlezda Other & unspec. major salivary gl.	M Ž	0.4 0.5	-	-	-	-	-	-	-	-	0.6	-	1.0	-	2.5	-	-	2.4	0.2
C09	Krajnik Tonsil	M Ž	1.2 0.3	-	-	-	-	-	-	-	-	-	1.1	1.5	3.4	2.1	5.9	0.9	4.8	0.7
C10	Orofaringis Oropharynx	M Ž	1.4 0.8	-	-	-	-	-	-	-	-	0.6	1.1	2.6	4.8	6.9	4.2	0.9	1.2	0.9
C11	Nasofaringis Nasopharynx	M Ž	2.0 0.5	-	-	-	2.8	1.1	-	-	-	5.1	6.7	4.4	5.5	0.8	1.7	1.8	1.4	0.3
C12	Piriformni sinus Pyriform sinus	M Ž	0.1 0.0	-	-	-	-	-	-	-	-	-	-	-	0.5	-	-	0.9	-	0.0
C13	Hipofaringis Hypopharynx	M Ž	3.8 0.5	-	-	-	-	-	-	1.1	0.6	5.1	6.2	13.5	11.0	14.3	5.1	5.4	2.3	0.3
C14	Usne, usta, ždrelo, drugi delovi Other and ill def. sites in the lip, oral cav. & phar	M Ž	0.7 0.3	-	-	-	-	-	-	-	-	1.1	1.0	1.0	2.7	-	0.9	3.6	0.4	0.2
C15	Jednjak Oesophagus	M Ž	6.8 1.2	-	-	-	0.6	0.5	-	1.7	0.6	10.2	9.8	17.4	24.0	16.9	15.3	14.5	4.1	0.6
C16	Želudac Stomach	M Ž	20.6 10.3	-	-	-	-	1.1	1.6	2.3	5.3	12.4	26.8	28.5	35.0	72.5	87.6	87.7	10.9	4.8
C17	Tanko crevo Small intestine	M Ž	1.0 0.7	-	-	-	-	-	0.5	-	-	1.2	1.1	1.0	1.5	2.1	2.5	2.6	3.6	0.6
C18	Debelo crevo Colon	M Ž	36.3 21.8	-	-	-	-	0.6	0.5	1.6	5.1	10.1	14.1	40.7	65.8	94.7	129.8	174.3	107.6	19.9
C19	Rektosigmoidni prelaz Rectosigmoid junction	M Ž	4.3 2.6	-	-	-	-	-	0.5	0.5	1.1	-	3.4	3.6	4.4	9.6	22.8	17.0	14.5	2.4
C20	Rektum Rectum	M Ž	24.4 14.0	-	-	-	-	-	1.6	4.2	1.7	10.7	9.6	28.3	42.6	65.8	78.4	89.3	90.7	13.4
C21	Anus i analni kanal Anus & anal canal	M Ž	0.5 0.5	-	-	-	-	-	-	-	-	-	0.5	1.9	1.4	0.8	2.6	1.8	0.3	0.2
C22	Jetra, žučni kanali Liver & intrahepatic bile ducts	M Ž	9.8 6.9	-	-	-	-	0.5	-	1.1	0.6	1.7	4.3	3.4	6.8	10.4	23.3	32.0	29.0	5.1
C23	Zučna kesa Gallbladder	M Ž	1.6 2.8	-	-	-	-	-	0.5	1.1	0.6	1.7	4.3	3.4	6.8	10.4	23.3	32.0	29.0	3.1
C24	Zučni kanali, drugi delovi Biliary tract, other & unspec. parts	M Ž	0.7 1.1	-	-	-	-	-	-	-	-	-	3.2	-	1.8	3.7	2.1	1.3	3.3	0.6
C25	Pankreas Pancreas	M Ž	12.0 9.4	-	-	-	0.6	-	0.5	0.6	5.3	7.9	14.4	24.7	30.9	41.3	34.0	44.1	6.6	4.5
C26	Org. za var., ned. odred. lok. Other & ill-defined digestive organs	M Ž	1.0 1.0	-	-	-	-	-	-	-	-	0.6	-	2.6	1.9	2.1	2.5	2.6	4.2	0.5
C30	Nosna šupljina i srednje uvo Nasal cavity & middle ear	M Ž	0.7 0.5	-	-	-	-	-	-	-	-	-	0.6	0.5	-	2.1	1.0	1.4	1.7	0.2
C31	Nosni sinusi Accessory sinuses	M Ž	0.9 0.3	-	-	-	-	-	-	-	-	-	4.1	2.4	-	2.5	6.0	0.6	0.5	
C32	Larings Larynx	M Ž	19.4 2.0	-	-	-	-	-	0.5	1.7	8.3	19.7	36.1	51.8	60.4	59.8	54.4	32.0	11.6	1.2
C33	Traheja Trachea	M Ž	0.4 0.2	-	-	-	-	-	-	0.5	-	-	-	1.9	2.7	-	-	0.9	0.6	0.2
C34	Bronh i pluća Bronchus & lung	M Ž	122.3 35.5	-	-	-	-	-	1.6	5.3	12.4	26.0	73.9	182.4	295.1	382.8	416.4	412.4	285.3	69.9
C37	Timus Thymus	M Ž	0.2 0.1	-	-	-	-	-	0.5	-	-	-	0.6	-	1.0	-	-	-	0.6	0.1
C38	Srce, mediastinum, pleura Heart, mediastinum & pleura	M Ž	1.6 0.7	-	-	-	-	-	1.1	-	0.6	1.7	1.5	4.4	2.7	3.4	6.8	4.2	0.9	0.3
C39	Toraks, druge lokalizacije Other & ill-def. in the res.sys.	M Ž	0.2 0.2	-	-	-	0.7	-	-	-	-	-	-	0.5	-	1.2	0.7	-	0.4	0.1
C40	Kosti i zglob. hrskavice udova Bone & articular cartilage of limbs	M Ž	2.3 1.8	-	6.3	9.1	7.0	2.3	0.5	0.5	0.6	0.6	1.7	1.0	1.5	2.1	0.8	2.6	2.4	2.8
C41	Kosti i zglob. hrskav., dr. lok. Bone & articular cartilage of other	M Ž	1.7 1.1	-	0.7	-	1.3	1.1	1.1	-	0.6	-	1.1	2.1	3.4	4.1	2.5	6.0	4.2	1.1
C43	Koža, maligni melanom Malignant melanoma of skin	M Ž	9.3 7.7	-	-	-	-	1.1	0.5	3.7	2.3	6.5	9.6	10.8	20.3	19.9	31.2	23.8	25.4	5.5
C44	Koža, drugi mal. tumori Skin, other malignomas	M Ž	64.5 54.8	-	-	0.7	1.9	4.0	4.3	6.3	9.6	15.4	25.4	39.7	76.9	147.5	207.3	281.4	321.6	33.5
C45	Mezoteliom Mesothelioma	M Ž	0.5 0.1	-	-	-	-	-	0.5	-	-	-	-	1.0	-	3.4	3.4	1.2	0.3	0.1
C46	Kaposijev sarkom Kaposi's sarcoma	M Ž	0.2 0.1	-	-	-	-	-	-	0.5	-	-	-	0.5	-	0.7	0.8	0.9	1.2	0.1
C47	Periferni nervi i aut. ner. sis. Peripheral nerves & auton. nerv. sys.	M Ž	0.2 0.3	-	-	-	0.6	-	0.5	0.5	-	0.6	0.5	-	0.9	-	0.7	-	-	0.3
C48	Peritoneum i retroperitoneum Retroperitoneum & peritoneum	M Ž	1.0 1.5	0.8	0.7	-	-	-	-	0.5	2.3	-	1.7	1.5	0.5	1.4	1.7	3.4	3.6	0.6
C49	Vežvna i meka tkiva, drugi Other connective and soft tissue	M Ž	3.4 3.3	0.7	-	0.7	-	4.0	0.5	4.8	3.9	2.4	5.1	1.5	6.8	7.5	5.1	3.4	7.3	2.5
C50	Dojka Breast	M Ž	2.1 120.3	-	-	-	-	1.8	13.0	23.9	51.4	113.4	164.1	211.3	281.7	293.6	260.9	208.2	176.5	71.5

Tabela 19.1 Incidencija od raka na 100.000 stanovnika prema primarnoj lokalizaciji (MKB-10), uzrastu i polu, centralna Srbija, 2009. godina (nastavak)

Table 19.1 Cancer incidence rates per 100,000 population by primary site (ICD-10), age and sex, Central Serbia, 2009 (continued)

MKB-10 (ICD-10) Šifra (Code) Ukupno (All)	Primarna lokalizacija Primary site	POL SEX	Sirova inc. CR	U Z R A S T (A g e)																	Stand. inc. ASR
				0-4	5-9	10-14	15-19	20-24	25-29	30-34	35-39	40-44	45-49	50-54	55-59	60-64	65-69	70-74	75+		
C51	Vulva Vulva	Ž	3.2	-	-	-	-	-	-	1.1	2.2	0.6	2.2	2.0	4.1	3.1	7.8	4.0	16.9	1.4	
C52	Vagina Vagina	Ž	0.6	-	-	-	-	-	0.5	0.5	-	0.6	1.1	-	1.4	0.6	2.1	1.3	0.8	0.4	
C53	Grlić materice Cervix uteri	Ž	40.2	-	-	-	-	1.2	7.6	26.1	46.9	70.4	76.1	76.2	77.7	70.8	54.3	50.0	40.0	27.1	
C54	Materica, telo Corpus uteri	Ž	26.1	-	-	-	-	0.6	0.5	3.2	6.1	10.9	18.9	47.7	64.1	75.1	65.6	60.1	42.1	14.4	
C55	Materica, neoznačeni deo Uterus, unspecified part	Ž	1.0	-	-	-	-	-	-	0.5	-	0.6	1.1	1.0	2.3	3.1	1.4	1.3	2.9	0.5	
C56	Jajnik Ovary	Ž	15.6	-	-	-	3.3	2.4	4.3	4.3	7.8	13.2	16.2	29.5	28.6	39.7	29.6	34.7	23.1	9.6	
C57	Ženski gen.org., dr. neoz. lok. Other & unspec. parts of fem. gen.org.	Ž	0.7	-	-	-	-	-	-	0.5	-	-	0.5	0.5	1.4	0.6	0.7	2.0	2.9	0.3	
C58	Placenta Placenta	Ž	0.0	-	-	-	-	-	-	-	-	-	-	0.5	-	-	-	-	-	0.0	
C60	Penis Penis	M	1.3	-	-	0.7	-	-	-	-	-	-	-	1.1	2.6	1.9	2.1	4.2	5.1	4.8	0.7
C61	Prostata Prostate	M	64.3	-	-	-	-	-	-	-	1.1	-	2.8	11.8	55.6	115.9	225.9	363.9	400.8	29.8	
C62	Testis Testis	M	7.1	-	0.7	0.7	0.6	13.0	19.7	23.8	13.0	11.2	3.9	5.2	4.4	0.7	3.4	2.6	1.2	6.6	
C63	Muški gen. org., dr. neoz. org. Other & unspec. male genital organs	M	0.2	-	-	-	-	0.6	-	-	-	-	-	1.0	-	-	0.8	-	0.6	0.1	
C64	Bubreg Kidney, except renal pelvis	M Ž	10.0 6.1	-	-	-	-	-	-	1.6 1.1	2.8 2.8	3.0 4.6	10.2 4.3	14.4 5.9	26.1 7.7	28.1 11.0	27.0 14.8	32.3 20.7	21.8 18.1	5.8 3.1	
C65	Bubrežna karlica Renal pelvis	M Ž	0.7 0.8	-	-	-	-	-	-	-	-	-	0.6 0.5	-	1.9 0.5	0.7 1.2	5.9 4.9	1.7 4.0	1.2 1.6	0.4 0.4	
C66	Ureter Ureter	M Ž	0.4 0.4	-	-	-	-	-	-	-	-	-	1.1 0.6	0.5 0.5	0.5 1.8	1.7 1.4	0.9 0.7	1.8 0.8	0.2 0.2		
C67	Mokraćna bešika Bladder	M Ž	30.3 9.5	-	-	-	-	-	2.7 0.5	2.6 1.1	4.5 0.6	8.9 5.4	17.5 12.3	23.7 16.4	49.8 23.2	74.8 21.9	98.6 26.0	115.6 32.2	129.4 4.5	16.3 4.5	
C68	Urinarini organi, dr. neoz. org. Other & unspecified urinary organs	M Ž	0.2 0.2	-	-	-	-	-	-	0.5 0.5	-	-	-	-	-	1.2 0.7	2.0 2.0	-	1.7 0.6	0.1 0.1	
C69	Oko, pripoji oka Eye and adnexa	M Ž	1.1 1.1	-	-	-	-	-	0.5 0.5	-	0.6 1.7	0.6 0.6	1.1 0.5	-	1.5 2.3	5.5 1.8	1.7 1.4	3.3 3.3	2.5 2.5	0.8 0.8	
C70	Moždanice Meninges	M Ž	0.5 0.5	-	1.4	-	-	0.6	0.5	-	-	0.6	0.6	1.0	1.0	0.7	0.8	0.9	0.6	0.5	
C71	Mozak Brain	M Ž	11.7 9.2	1.5 6.4	3.5 5.9	4.2 2.2	7.0 2.6	1.1 2.9	2.1 2.7	3.2 3.7	3.9 3.9	7.7 5.7	13.5 6.5	14.9 10.3	17.9 18.2	32.2 18.9	32.9 15.5	31.5 18.7	21.8 17.3	8.3 6.6	
C72	Centralni ner. sis., dr. delovi Spinal cord, cran. nerv. & oth. parts of CNS	M Ž	0.7 0.3	-	-	2.8	-	-	0.5	-	0.6	-	0.6	-	1.5	0.7	2.5	-	2.4	0.6	
C73	Štitasta žlezda Thyroid gland	M Ž	1.6 5.8	-	-	-	1.3	-	2.1	-	1.7	0.6	0.6	1.5	5.3	3.4	3.4	4.3	1.8	1.1	
C74	Nadbubrežna žlezda Adrenal gland	M Ž	0.7 0.5	2.2 0.8	-	-	-	-	-	0.5	-	-	0.6	0.5	1.0	1.4	1.7	2.6	1.2	0.6	
C75	Endokrine žlezde, druge Other endocrine glands & related structures	M Ž	0.3 0.2	-	-	0.7	1.3	-	-	-	-	-	-	0.5	0.5	0.6	-	0.7	0.6	0.2	
C76	Ostale lokalizacije Other & ill defined sites	M Ž	2.3 1.9	0.7 0.8	-	-	-	-	0.5	-	0.5	-	1.1	3.1	5.8	6.2	7.6	5.1	9.1	1.3	
C77-C80	Sekundarne lok., bez ozn. lok. Unspec. lym. nod. neop. & without of spec. of site	M Ž	11.9 8.8	4.5 1.5	-	-	1.3	2.3	2.7	1.6	4.5	3.0	3.4	19.6	22.3	32.2	37.1	37.4	32.0	7.5	
C81	Hodgkinova bolest Hodgkin's disease	M Ž	2.8 2.1	-	0.7	0.7	1.9	1.7	3.7	2.1	4.5	5.9	2.3	5.2	2.4	2.1	1.7	2.6	4.8	2.3	
C82	Ne-Hodgkinov lim., folikularni Follicular non-Hodgkin's lymphoma	M Ž	2.0 2.1	-	0.7	-	-	0.6	-	0.5	0.6	1.2	1.7	3.6	2.4	7.5	4.2	5.1	5.4	1.3	
C83	Ne-Hodgkinov lim., difuzni Diffuse non-Hodgkin's lymphoma	M Ž	3.8 2.8	1.5	-	-	-	-	-	1.1	1.1	1.1	1.1	2.7	2.9	4.5	6.7	3.5	9.3	1.5	
C84	Periferni i kožni lim. T-ćelija Peripheral & cutaneous T-cell lymphoma	M Ž	0.3 0.1	0.8	-	-	-	-	-	-	-	-	-	1.7	-	0.5	-	-	0.4	0.1	
C85	Ne-Hodgkinovi limfomi, drugi Other & unspec. types of non-Hodgkin's lymph	M Ž	2.5 2.7	-	1.4	-	0.6	-	1.1	1.6	1.1	1.8	0.6	2.6	2.9	6.9	2.5	11.9	7.9	1.6	
C88	Zloćudne imunoprolifer. bolesti Malignant immunoproliferative diseases	M Ž	0.3 0.1	-	-	-	-	-	-	-	-	-	-	0.6	-	0.5	0.7	-	1.7	0.1	
C90	Mult. mijelom i zloć. tum. plaz. ćel. Mult. myeloma and mal. plasma cell neo.	M Ž	3.0 2.5	-	-	-	-	-	-	-	1.1	1.8	3.4	4.1	2.4	8.9	10.1	11.1	9.1	1.7	
C91	Limfoidna leukemija Lymphoblastic, lymphoid leukaemia	M Ž	4.4 2.7	5.2 4.8	2.8 2.2	2.8	1.9	0.6	0.5	-	-	-	1.2	1.1	4.1	5.8	11.0	5.9	24.7	3.3	
C92	Mijeloidna leukemija Myeloid leukaemia	M Ž	3.3 2.1	-	0.7	1.4	0.6	0.6	0.5	1.6	1.7	2.4	4.5	5.7	5.3	6.9	7.6	9.4	6.6	2.3	
C93	Monocitna leukemija Monocytic leukaemia	M Ž	0.3 0.1	-	-	-	-	-	-	0.5	-	-	-	-	0.5	-	-	1.3	-	0.1	
C94	Leukemije, druge Other leukaemias of specified cells	M Ž	0.2 0.0	-	-	-	-	-	-	-	-	0.6	-	-	-	-	0.6	-	-	0.1	
C95	Leukemije, neoznačene Leukaemia, unspecified cell type	M Ž	0.7 0.4	1.5 0.8	-	-	-	-	-	-	1.1	-	0.6	1.0	1.0	-	1.7	3.4	2.4	0.5	
C96	Dr. zloć. tum. hematop. sist. Other & unsp. mal. neo. of lym., haem. & tissue	M Ž	0.0 0.1	0.8	-	-	-	-	-	-	-	-	-	0.5	-	-	-	-	-	0.0	
C00-C96 (C44)	Sve lokalizacije, bez kože All sites but skin	M Ž	473.8 405.3	18.0 18.4	18.9 13.3	23.8 9.6	24.6 27.2	34.5 27.7	47.9 52.1	69.1 99.4	85.2 178.1	137.9 307.6	280.4 438.9	554.3 606.4	876.7 778.9	1204.5 896.6	1489.3 884.2	1743.1 918.1	1562.6 826.2	271.1 233.4	



Tabela 20. Broj umrlih slučajeva od raka, prema primarnoj lokalizaciji (MKB010), uzrastu i polu, centralna Srbija, 2009. godina

Table 20. Number of cancer deaths by primary site (ICD010), age and sex, Central Serbia, 2009

MKB-10 (ICD-10) Šifra (Code)	Primarna lokalizacija Primary site	POL SEX	Ukupno (All)	U Z R A S T (Age)																	%
				0-4	5-9	10-14	15-19	20-24	25-29	30-34	35-39	40-44	45-49	50-54	55-59	60-64	65-69	70-74	75+		
Ukupno (All)		M (Male) Ž (Female)	8506 6536	6 8	8 1	8 2	8 9	5 5	11 14	15 45	40 64	51 125	102 248	253 462	578 758	1052 758	1056 679	1157 790	1517 1054	2647 2272	100.0% 100.0%
C00	Usna Lip	M Ž	12 5	-	-	-	-	-	-	-	-	-	-	-	1	-	-	3	1	7	0.1%
C01	Jezik, koren Base of tongue	M Ž	19 1	-	-	-	-	-	-	-	-	-	-	3	3	3	1	6	1	2	0.2%
C02	Jezik, drugi delovi Tongue, other & unspecified parts	M Ž	39 8	-	-	-	-	-	-	-	-	-	-	2	8	9	9	3	3	5	0.5%
C03	Desni Gum	M Ž	1 0	-	-	-	-	-	-	-	-	-	-	1	-	-	-	-	-	-	0.0%
C04	Pod usta Floor of mouth	M Ž	25 6	-	-	-	-	-	-	-	-	-	-	-	7	7	3	3	4	1	0.3%
C05	Nepce Palate	M Ž	6 3	-	-	-	-	-	-	-	-	-	-	1	1	1	1	1	-	2	0.1%
C06	Usta, drugi delovi Mouth, other & unspecified parts	M Ž	7 6	-	-	-	-	-	-	-	-	-	2	-	-	-	2	-	2	1	0.1%
C07	Parotidna žlezda Parotid gland	M Ž	14 7	-	-	-	-	-	-	-	-	-	-	-	1	3	1	4	5	0.2%	
C08	Pljuvačna žlezda Other & unspec. major salivary gl.	M Ž	3 4	-	-	-	-	-	-	-	-	-	-	-	-	-	1	1	2	0.1%	
C09	Krajnik Tonsil	M Ž	17 4	-	-	-	-	-	-	-	-	-	-	2	6	2	2	1	2	0.2%	
C10	Orofarings Oropharynx	M Ž	19 6	-	-	-	-	-	-	-	1	2	1	1	5	4	2	2	2	0.2%	
C11	Nasofarings Nasopharynx	M Ž	21 7	-	-	-	1	-	-	-	-	1	1	3	4	3	2	2	4	0.2%	
C12	Piriformni sinus Pyiform sinus	M Ž	0 0	-	-	-	-	-	-	-	-	-	-	-	-	-	-	-	-	-	0.0%
C13	Hipofarings Hypopharynx	M Ž	65 11	-	-	-	-	-	-	-	1	6	17	13	7	7	6	8	8	0.8%	
C14	Usne, usta, ždrelo, drugi delovi Other and ill def. sites in the lip, oral cav. & pha.	M Ž	9 0	-	-	-	-	-	-	-	-	1	1	1	2	1	1	2	1	2	0.1%
C15	Jednjak Oesophagus	M Ž	155 42	-	-	-	-	1	-	-	4	6	14	28	35	18	22	27	1.8%		
C16	Želudac Stomach	M Ž	548 311	-	1	-	-	-	-	3	4	9	18	35	42	57	77	115	187	6.4%	
C17	Tanko crevo Small intestine	M Ž	12 8	-	-	-	-	-	1	1	5	1	16	17	28	28	40	48	126	4.8%	
C18	Debelo crevo Colon	M Ž	517 400	-	-	-	-	-	2	1	3	6	27	52	60	121	193	6.1%			
C19	Rektosigmoidni prelaz Rectosigmoid junction	M Ž	39 26	-	-	-	-	1	-	-	-	2	1	5	9	5	8	9	0.5%		
C20	Rektum Rectum	M Ž	498 317	-	-	-	-	-	1	3	5	12	19	46	63	74	105	170	5.9%		
C21	Anus i analni kanal Anus & anal canal	M Ž	8 3	-	-	-	-	-	-	-	-	1	-	1	3	-	1	2	0.1%		
C22	Jetra, žučni kanali Liver & intrahepatic bile ducts	M Ž	327 234	-	-	-	-	-	2	-	3	9	18	34	43	44	57	117	3.8%		
C23	Žučna kesha Gallbladder	M Ž	36 103	-	-	-	-	-	-	-	-	-	4	4	5	5	7	11	0.4%		
C24	Žučni kanali, drugi delovi Biliary tract, other & unspec. parts	M Ž	48 38	-	-	-	-	-	-	-	1	-	3	6	5	9	7	17	0.6%		
C25	Pankreas Pancreas	M Ž	402 358	-	-	-	1	-	1	1	6	13	22	58	45	78	57	120	4.7%		
C26	Org. za var., ned. odred. lok. Other & ill-defined digestive organs	M Ž	10 25	-	-	-	-	-	-	2	9	17	23	33	37	67	166	5.5%			
C30	Nosna šupljina i srednje uvo Nasal cavity & middle ear	M Ž	10 2	-	-	-	-	-	-	-	-	1	-	2	2	1	4	14	0.1%		
C31	Nosni sinusi Accessory sinuses	M Ž	4 2	-	-	1	-	-	-	1	-	-	-	1	-	-	-	1	1	0.0%	
C32	Larings Larynx	M Ž	292 22	-	-	-	-	-	-	-	4	14	33	45	50	29	45	72	3.4%		
C33	Traheja Trachea	M Ž	5 6	-	-	-	-	-	-	1	2	-	-	1	2	1	-	1	0.1%		
C34	Bronh i pluća Bronchus & lung	M Ž	2566 904	-	-	-	-	1	5	12	28	92	227	425	386	407	463	520	30.2%		
C37	Timus Thymus	M Ž	2 3	-	-	-	-	-	-	1	-	-	-	1	-	-	-	1	0.0%		
C38	Srce, mediastinum, pleura Heart, mediastinum & pleura	M Ž	37 16	1	-	-	-	-	1	-	-	-	1	-	1	1	1	11	0.2%		
C39	Toraks, druge lokalizacije Other & ill-def. in the res. sys.	M Ž	2 1	-	-	-	-	-	-	-	-	-	-	-	-	-	-	-	2	0.0%	
C40	Kosti i zglob. hrskavice udova Bone & articular cartilage of limbs	M Ž	20 14	-	1	3	2	2	1	1	2	1	3	-	1	2	1	2	1	0.2%	
C41	Kosti i zglob. hrskav., dr. lok. Bone & articular cartilage of other	M Ž	38 18	-	1	1	1	-	-	-	-	-	4	7	3	1	3	17	0.4%		
C43	Koža, maligni melanom Malignant melanoma of skin	M Ž	105 78	-	-	-	-	-	1	5	5	5	9	15	11	14	11	29	1.2%		
C44	Koža, drugi mal. tumori Skin, other malignomas	M Ž	59 53	-	-	-	-	-	-	-	2	1	4	8	4	9	31	0.7%			
C45	Mezotelioma Mesothelioma	M Ž	15 3	-	-	-	-	-	-	-	-	2	4	4	-	1	1	1	0.0%		
C46	Kaposijev sarkom Kaposi's sarcoma	M Ž	2 4	-	-	1	-	-	-	-	-	-	-	-	-	-	2	1	0.0%		
C47	Periferni nervi i aut. ner. sis. Peripheral nerves & auton. nerv. sys.	M Ž	3 2	-	-	-	-	-	1	-	-	-	-	1	-	1	-	-	1	0.0%	
C48	Peritoneum i retroperitoneum Retroperitoneum & peritoneum	M Ž	18 36	-	-	-	-	1	1	1	1	1	3	2	6	2	3	13	5	0.6%	
C49	Vezivna i meka tkiva, drugi Other connective and soft tissue	M Ž	22 13	1	-	1	1	-	-	1	1	1	2	2	1	1	1	1	2	0.2%	
C50	Dojka Breast	M Ž	24 1145	-	-	-	-	-	3	6	13	30	56	95	176	140	140	154	332	17.5%	

**Tabela 20.1 Broj umrlih slučajeva od raka, prema primarnoj lokalizaciji (MKB010), uzrastu i polu, centralna Srbija, 2009. godina (nastavak)**

*Table 20.1 Number of cancer deaths by primary site (ICD010), age and sex, Central Serbia, 2009 (continued)*

MKB-10 (ICD-10)	Primarna lokalizacija Primary site	POL SEX	Ukupno (All)	U Z R A S T ( A g e )																	%
				0-4	5-9	10-14	15-19	20-24	25-29	30-34	35-39	40-44	45-49	50-54	55-59	60-64	65-69	70-74	75+		
Sifra (Code)		M (Male)	8506	6	8	8	5	11	15	40	51	102	253	578	1052	1056	1157	1517	2647	100.0%	
Ukupno (All)		Ž (Female)	6536	8	1	2	9	5	14	45	64	125	248	462	758	679	790	1054	2272	100.0%	
C51	Vulva Vulva	Ž	53	-	-	-	-	-	-	1	-	-	1	1	3	1	9	9	28	0.8%	
C52	Vagina Vagina	Ž	7	-	-	-	-	-	-	-	-	-	-	-	1	-	1	1	4	0.1%	
C53	Grlić materice Cervix uteri	Ž	358	-	-	-	-	-	-	4	9	17	31	38	59	39	32	44	85	5.5%	
C54	Materica, telo Corpus uteri	Ž	140	-	-	-	-	-	-	2	-	2	6	5	14	20	15	22	54	2.1%	
C55	Materica, neoznačeni deo Uterus, unspecified part	Ž	76	-	-	-	-	-	-	-	-	-	3	9	6	10	9	14	25	1.2%	
C56	Jajnik Ovary	Ž	296	-	-	-	-	1	-	2	3	10	16	14	52	44	40	47	67	4.5%	
C57	Ženski gen.org., dr. neoz. lok. Other & unsp. parts of fem. gen.org.	Ž	10	-	-	-	-	-	-	-	-	-	-	-	4	1	2	-	3	0.2%	
C58	Placenta Placenta	Ž	0	-	-	-	-	-	-	-	-	-	-	-	-	-	-	-	-	0.0%	
C60	Penis Penis	M	8	-	-	-	-	-	-	-	-	-	-	-	1	2	1	2	2	0.1%	
C61	Prostata Prostate	M	720	-	-	-	-	-	-	-	-	-	1	3	10	36	59	123	488	8.5%	
C62	Testis Testis	M	23	-	2	-	-	3	2	4	2	-	1	1	-	1	2	-	5	0.3%	
C63	Muški gen. org., dr. neoz. org. Other & unsp. male genital organs	M	2	-	-	-	-	-	-	-	-	-	-	-	-	-	-	2	-	0.0%	
C64	Bubreg Kidney, except renal pelvis	M	142	-	-	-	-	-	-	2	2	2	7	27	15	18	25	44	1.7%		
C65	Bubrežna karlica Renal pelvis	Ž	103	-	-	-	-	-	-	-	1	1	2	7	7	8	13	13	51	1.6%	
C66	Ureter Ureter	M	5	-	-	-	-	-	-	-	-	-	-	-	2	-	-	3	0.1%		
C67	Mokraćna bešika Bladder	Ž	3	-	-	-	-	-	-	-	-	-	-	1	1	-	-	1	0.0%		
C68	Urinarni organi, dr. neoz. org. Other & unspecified urinary organs	M	8	-	-	-	-	-	-	-	-	-	1	-	-	1	3	3	0.1%		
C69	Okno, pripoji oka Eye and adnexa	Ž	4	-	-	-	-	-	-	-	-	-	-	1	1	-	-	2	0.1%		
C70	Moždanice Meninges	M	10	-	-	-	-	-	-	-	-	-	1	-	2	-	1	6	0.1%		
C71	Mozak Brain	Ž	6	-	-	-	-	-	-	-	-	-	-	1	1	-	3	1	0.1%		
C72	Centralni ner. sis., dr. delovi Spinal cord, cran. nerv. & oth. parts of CNS	M	11	1	1	4	-	-	3	3	5	10	17	39	37	38	53	47	3.2%		
C73	Štitasta žlezda Thyroid gland	Ž	234	4	1	-	1	2	1	6	6	7	8	21	36	28	21	33	59	3.6%	
C74	Nadbubrežna žlezda Adrenal gland	M	8	-	1	-	-	-	1	-	-	-	-	-	2	2	-	2	0.1%		
C75	Endokrine žlezde, druge Other endocrine glands & related struct.	Ž	15	-	1	-	-	-	-	-	-	-	1	2	2	3	1	3	0.2%		
C76	Ostale lokalizacije Other & ill defined sites	M	7	-	-	-	-	-	-	-	-	-	-	-	2	-	1	3	0.1%		
C77-C80	Sekundarne lok., bez ozn. lok. Unspec. lym. nod. neop. & without of spec. of site	M	4	-	-	-	-	-	1	1	-	1	2	7	4	6	6	31	0.7%		
C81	Hodgkinova bolest Hodgkin's disease	Ž	122	-	-	-	-	-	1	-	1	-	3	4	6	9	12	20	66	1.9%	
C82	Ne-Hodgkinov lim., folikularni Follicular non-Hodgkin's lymphoma	M	352	-	-	-	-	-	1	2	1	4	4	25	55	42	56	63	99	4.1%	
C83	Ne-Hodgkinov lim., difuzni Diffuse non-Hodgkin's lymphoma	Ž	300	1	-	-	-	-	3	1	2	13	21	25	25	36	58	115	4.6%		
C84	Periferni i kožni lim. T-ćelija Peripheral & cutaneous T-cell lymphoma	M	30	-	-	-	-	1	2	2	1	3	4	3	2	-	2	2	8	0.4%	
C85	Ne-Hodgkinovi limfomi, drugi Other & unsp. types of non-Hodgkin's lymph	Ž	22	-	-	-	-	1	3	3	1	1	-	3	-	1	2	3	4	0.3%	
C88	Zloćudne imunoprolifer. bolesti Malignant immunoproliferative diseases	M	13	-	-	-	-	-	-	-	1	1	3	1	2	1	1	3	0.2%		
C90	Mult. mijelom i zloć. tum. plaz. ćel. Mult. myeloma and mal. plasma cell neo.	Ž	10	-	-	-	-	-	-	-	-	-	2	1	2	-	2	3	0.2%		
C91	Limfoidna leukemija Lymphoblastic, lymphoid leukaemia	M	35	-	-	-	-	-	-	-	3	5	1	5	3	4	4	10	0.4%		
C92	Mijeloidna leukemija Myeloid leukaemia	Ž	45	-	-	-	-	-	3	2	-	2	2	4	4	7	10	11	0.7%		
C93	Monocitna leukemija Monocytic leukaemia	M	7	-	-	-	-	1	-	-	-	-	-	-	1	-	-	-	1	0.0%	
C94	Leukemije, druge Other leukaemias of specified cells	Ž	3	-	-	-	-	-	1	-	-	-	-	-	-	-	-	1	0.0%		
C95	Leukemije, neoznačene Leukaemia, unspecified cell type	M	79	-	-	-	-	1	1	3	2	1	8	8	6	10	15	24	0.9%		
C96	Dr. zloć. tum. hematop. sist. Other & unsp. mal. neo. of lym., haem. & tissue	Ž	73	-	-	-	-	-	2	-	-	-	1	5	5	10	11	19	20	1.1%	
C00-C96	Sve lokalizacije, bez kože All sites but skin	M	7	-	-	-	-	-	-	-	-	-	-	-	-	1	-	-	-	0.0%	
(C44)		Ž	3	-	-	-	-	-	-	-	-	-	1	-	-	1	-	-	-	0.0%	
			8447	6	8	8	5	11	15	40	51	102	251	577	1048	1048	1153	1508	2616	99.3%	
			6483	8	1	2	9	5	14	45	64	125	248	460	756	677	787	1050	2232	99.2%	





Tabela 21.1 Mortalitet od raka na 100.000 stanovnika prema primarnoj lokalizaciji (MKB010), uzrastu i polu, centralna Srbija, 2009. godina (nastavak)

Table 21.1 Cancer mortality rates per 100.000 population by primary site (ICD010), age and sex, Central Serbia, 2009 (continued)

MKB-10 (ICD-10)	Primarna lokalizacija <i>Primary site</i>	POL <i>SEX</i>	Sirovi mortality CR	U Z R A S T ( A g e )																	Stand. mortality ASR
Šifra (Code) Ukupno (All)		M (Male) Ž (Female)		0-4	5-9	10-14	15-19	20-24	25-29	30-34	35-39	40-44	45-49	50-54	55-59	60-64	65-69	70-74	75+		
C51	Vulva <i>Vulva</i>	Ž	1.9	-	-	-	-	-	-	0.5	-	-	0.5	0.5	1.4	0.6	6.3	6.0	11.5	0.7	
C52	Vagina <i>Vagina</i>	Ž	0.3	-	-	-	-	-	-	-	-	-	-	-	0.5	-	0.7	0.7	1.6	0.1	
C53	Grlić materice <i>Cervix uteri</i>	Ž	13.0	-	-	-	-	-	-	2.1	5.0	9.7	16.7	18.7	26.8	23.8	22.6	29.4	35.0	6.9	
C54	Materica, telo <i>Corpus uteri</i>	Ž	5.1	-	-	-	-	-	-	1.1	-	1.1	3.2	2.5	6.4	12.2	10.6	14.7	22.3	2.2	
C55	Materica, neoznačeni deo <i>Uterus, unspecified part</i>	Ž	2.8	-	-	-	-	-	-	-	-	-	1.6	4.4	2.7	6.1	6.3	9.3	10.3	1.3	
C56	Jajnik <i>Ovary</i>	Ž	10.8	-	-	-	-	0.6	-	1.1	1.7	5.7	8.6	6.9	23.6	26.9	28.2	31.4	27.6	5.5	
C57	Ženski gen.org., dr. neoz. lok. <i>Other &amp; unspec. parts of fem. gen.org.</i>	Ž	0.4	-	-	-	-	-	-	-	-	-	-	-	1.8	0.6	1.4	-	1.2	0.2	
C58	Placenta <i>Placenta</i>	Ž	0.0	-	-	-	-	-	-	-	-	-	-	-	-	-	-	-	-	0.0	
C60	Penis <i>Penis</i>	M	0.3	-	-	-	-	-	-	-	-	-	-	-	0.5	1.4	0.8	1.7	1.2	0.2	
C61	Prostata <i>Prostate</i>	M	27.7	-	-	-	-	-	-	-	-	-	0.6	1.5	4.8	24.7	49.7	104.6	295.0	10.8	
C62	Testis <i>Testis</i>	M	0.9	-	1.4	-	-	1.7	1.1	2.1	1.1	-	0.6	0.5	-	0.7	1.7	-	3.0	0.8	
C63	Muški gen.org., dr. neoz. org. <i>Other &amp; unspec. male genital organs</i>	M	0.1	-	-	-	-	-	-	-	-	-	-	-	-	-	-	1.7	-	0.0	
C64	Bubreg <i>Kidney, except renal pelvis</i>	M Ž	5.5 3.7	-	-	-	-	-	-	-	1.1	1.2	1.1	3.6	13.1	10.3	15.2	21.3	26.6	2.7	
C65	Bubrežna karlica <i>Renal pelvis</i>	M Ž	0.2 0.1	-	-	-	-	-	-	-	-	-	-	-	-	1.4	-	-	1.8	0.1	
C66	Ureter <i>Ureter</i>	M Ž	0.3 0.1	-	-	-	-	-	-	-	-	-	-	0.5	-	0.8	2.6	1.8	0.1	0.1	
C67	Mokraćna bešika <i>Bladder</i>	M Ž	12.0 4.2	-	-	-	-	-	-	0.6	-	1.7	5.7	12.6	16.5	23.6	56.1	92.5	29.7	5.3	
C68	Urinarni organi, dr. neoz. org. <i>Other &amp; unspecified urinary organs</i>	M Ž	0.0 0.0	-	-	-	-	-	-	-	-	-	-	-	-	-	-	-	-	0.0	
C69	Oklo, pripojni oka <i>Eye and adnexa</i>	M Ž	0.4 0.2	-	-	-	-	-	-	-	-	0.6	-	-	-	1.4	-	0.9	3.6	0.2	
C70	Moždanice <i>Meninges</i>	M Ž	0.4 0.4	-	-	0.7	-	-	-	-	0.6	-	-	-	0.5	0.5	-	2.0	0.4	0.1	
C71	Mozak <i>Brain</i>	M Ž	10.6 8.5	0.7	0.7	2.8	-	1.6	1.6	2.8	5.9	9.6	8.8	18.9	25.4	32.0	45.1	28.4	6.4		
C72	Centralni ner. sis., dr. delovi <i>Spinal cord, cran. nerv. &amp; oth. parts of CNS</i>	M Ž	0.3 0.3	-	0.7	-	0.7	1.2	0.5	3.2	3.3	4.0	4.3	10.3	16.4	17.1	14.8	22.0	24.3	0.2	
C73	Štitasta žlezda <i>Thyroid gland</i>	M Ž	0.4 0.9	-	-	-	-	-	-	-	-	-	-	1.5	-	0.7	0.8	2.6	1.2	0.2	
C74	Nadbubrežna žlezda <i>Adrenal gland</i>	M Ž	0.6 0.3	-	0.7	-	-	-	-	-	-	0.6	-	1.0	1.0	1.4	2.5	0.9	1.8	0.4	
C75	Endokrine žlezde, druge <i>Other endocrine glands related struct.</i>	M Ž	0.2 0.1	-	-	-	-	-	-	-	-	-	-	0.5	0.5	-	0.7	-	1.7	0.6	
C76	Ostale lokalizacije <i>Other &amp; ill defined sites</i>	M Ž	2.3 4.4	-	-	-	-	0.5	-	0.6	-	0.6	-	1.6	2.0	2.7	5.5	8.5	13.3	27.2	
C77-C80	Sekundarne lok., bez ozn. lok. <i>Unspec. lym.nod.neop.&amp;without of spec.of site</i>	M Ž	13.5 10.9	-	0.8	-	-	0.5	1.1	0.6	2.4	2.3	12.9	26.6	28.8	47.2	53.6	59.8	7.0	4.8	
C81	Hodgkinova bolest <i>Hodgkin's disease</i>	M Ž	1.2 0.8	-	-	-	0.6	1.1	1.1	0.6	1.8	2.3	1.5	1.0	-	1.7	1.7	4.8	0.8	0.6	
C82	Ne-Hodgkinov lim., folikularni <i>Follicular non-Hodgkin's lymphoma</i>	M Ž	0.5 0.4	-	-	-	0.6	1.6	1.6	0.6	0.6	-	0.6	1.5	0.6	1.4	2.0	1.6	0.6	0.3	
C83	Ne-Hodgkinov lim., difuzni <i>Diffuse non-Hodgkin's lymphoma</i>	M Ž	1.3 1.6	-	-	-	-	-	-	-	1.8	2.8	0.5	2.4	2.1	3.4	3.4	6.0	0.8	0.8	
C84	Periferni i kožni lim. T-ćelija <i>Peripheral &amp; cutaneous T-cell lymphoma</i>	M Ž	0.3 0.1	-	-	-	0.6	-	0.5	-	0.6	-	-	-	0.5	-	0.7	0.8	1.7	0.6	
C85	Ne-Hodgkinovi limfomi, drugi <i>Other &amp; unspec. types of non-Hodgkin's lymph.</i>	M Ž	3.0 2.7	-	-	-	-	0.5	0.5	1.7	1.2	0.6	4.1	3.9	4.1	8.4	12.8	14.5	1.6	1.2	
C88	Zloćudne imunoprolifer. bolesti <i>Malignant immunoproliferative diseases</i>	M Ž	0.3 0.0	-	-	-	-	-	-	-	-	-	-	-	-	0.7	-	2.6	1.8	0.1	
C90	Mult. mijelom i zloć. tum. plaz. ćel. <i>Mult.myeloma and mal.plasma cell neo.</i>	M Ž	2.2 2.3	-	-	-	-	-	-	-	0.6	0.6	2.2	2.6	3.9	4.1	9.3	8.5	7.3	1.2	
C91	Limfoidna leukemija <i>Lymphoblastic, lymphoid leukaemia</i>	M Ž	4.3 2.9	3.0	-	0.7	0.6	0.6	0.5	1.1	-	0.6	2.6	1.9	8.2	17.7	19.6	21.2	2.5	1.3	
C92	Mijeloidna leukemija <i>Myeloid leukaemia</i>	M Ž	3.8 2.8	-	0.7	0.7	-	-	-	1.6	1.1	1.2	2.3	5.2	5.8	8.9	11.0	15.3	11.5	2.2	
C93	Monocitna leukemija <i>Monocytic leukaemia</i>	M Ž	0.3 0.2	-	-	-	-	-	-	-	-	-	0.6	-	-	0.7	2.5	0.9	1.8	0.2	
C94	Leukemije, druge <i>Other leukaemias of specified cells</i>	M Ž	0.0 0.1	-	-	-	-	-	-	-	-	-	-	-	-	-	-	-	0.8	0.0	
C95	Leukemije, neoznačene <i>Leukaemia, unspecified cell type</i>	M Ž	0.6 0.5	-	-	-	-	-	-	-	-	-	0.5	-	0.5	-	1.4	0.7	4.1	0.2	
C96	Dr. zloć. tum. hematop. sist. <i>Other&amp;unsp.mal.neo.of lym.,haem.&amp; tissue</i>	M Ž	0.0 0.1	-	-	-	-	-	-	-	-	-	-	-	-	0.7	-	-	-	0.0	
C00-C96 (C44)	Sve lokalizacije, bez kože <i>All sites but skin</i>	M Ž	324.5 235.8	4.5	5.6	5.6	3.2	6.2	8.0	21.1	28.8	60.4	141.6	297.2	507.1	718.9	971.8	1282.2	1581.3	168.5	

Tabela 22. Ukupan broj novoobolelih, broj i procenat histološki i citološki verifikovanih slučajeva raka prema primarnoj lokalizaciji i polu, centralna Srbija, 2009. godina

Table 22. Total number of new cancer cases, number and percentage of histologically and cytologically confirmed cancer cases by primary site and sex, Central Serbia 2009

MKB-10 (ICD-10) Šifra (Code) Ukupno (All)	Primarna lokalizacija Primary site	POL SEX		Ukupan broj novoobolelih All new cases		Broj histo. / cito. verifikovanih Number of cases histo/ cyto. confirmed		%
		M (Male)	Ž (Female)	14012	12651	12424	11405	
C00	Usna Lip	M	Ž	90	28	84	27	93.3% 96.4%
C01	Jezik, koren Base of tongue	M	Ž	22	3	22	2	100.0% 66.7%
C02	Jezik, drugi delovi Tongue, other & unspecified parts	M	Ž	50	13	43	7	86.0% 53.8%
C03	Desni Gum	M	Ž	16	4	6	1	37.5% 25.0%
C04	Pod usta Floor of mouth	M	Ž	47	22	26	4	55.3% 18.2%
C05	Nepce Palate	M	Ž	14	6	14	6	100.0% 100.0%
C06	Usta, drugi delovi Mouth, other & unspecified parts	M	Ž	10	26	10	7	100.0% 26.9%
C07	Parotidna žlezda Parotid gland	M	Ž	15	16	15	14	100.0% 87.5%
C08	Pljučna žlezda Other & unspec. major salivary gl.	M	Ž	10	14	8	13	80.0% 92.9%
C09	Krajnik Tonsil	M	Ž	31	9	28	9	90.3% 100.0%
C10	Orofarings Oropharynx	M	Ž	36	22	35	20	97.2% 90.9%
C11	Nasofarings Nasopharynx	M	Ž	52	15	50	14	96.2% 93.3%
C12	Piriformni sinus Pyriform sinus	M	Ž	2	1	2	1	100.0% 100.0%
C13	Hipofarings Hypopharynx	M	Ž	100	13	100	12	100.0% 92.3%
C14	Usne, usta, ždrelo, drugi delovi Other & ill def. sites in the lip oral cavity & pharynx	M	Ž	17	9	14	6	82.4% 66.7%
C15	Jednjak Oesophagus	M	Ž	176	32	165	32	93.8% 100.0%
C16	Želudac Stomach	M	Ž	536	284	519	278	96.8% 97.9%
C17	Tanko crevo Small intestine	M	Ž	25	18	21	16	84.0% 88.9%
C18	Debelo crevo Colon	M	Ž	946	600	916	566	96.8% 94.3%
C19	Rektosigmoidni prelaz Rectosigmoid junction	M	Ž	111	72	108	70	97.3% 97.2%
C20	Rektum Rectum	M	Ž	636	385	630	385	99.1% 100.0%
C21	Anus i analni kanal Anus & anal canal	M	Ž	14	13	14	12	100.0% 92.3%
C22	Jetra, žučni kanali Liver & intrahepatic bile ducts	M	Ž	256	191	221	164	86.3% 85.9%
C23	Žužna kesica Gallbladder	M	Ž	42	76	37	74	88.1% 97.4%
C24	Žučni kanali, drugi delovi Biliary tract, other & unspec. parts	M	Ž	17	29	16	25	94.1% 86.2%
C25	Pankreas Pancreas	M	Ž	312	258	247	189	79.2% 73.3%
C26	Org. za var., neodređ. lok. Other & ill-defined digestive organs	M	Ž	26	27	25	24	96.2% 88.9%
C30	Nosna šupljina i srednje uvo Nasal cavity & middle ear	M	Ž	17	14	16	14	94.1% 100.0%
C31	Nosni sinusi Accessory sinuses	M	Ž	24	7	21	6	87.5% 85.7%
C32	Larings Larynx	M	Ž	506	54	489	51	96.6% 94.4%
C33	Traheja Trachea	M	Ž	10	5	9	4	90.0% 80.0%
C34	Bronh i pluća Bronchus & lung	M	Ž	3183	975	2784	796	87.5% 81.6%
C37	Timus Thymus	M	Ž	4	4	4	4	100.0% 100.0%
C38	Srce, mediastinum, pleura Heart, mediastinum & pleura	M	Ž	41	18	38	17	92.7% 94.4%
C39	Toraks, druge lokalizacije Other & ill-def. in the res. sys. & intrath. org.	M	Ž	5	5	2	2	40.0% 40.0%
C40	Kosti i zglobovi hrskavice udova Bone & articular cartilage of limbs	M	Ž	60	50	54	46	90.0% 92.0%
C41	Kosti i zglobovi hrskav., dr. lok. Bone & artic. cart. of other & unspec. parts	M	Ž	44	29	40	27	90.9% 93.1%
C43	Koža, maligni melanom Malignant melanoma of skin	M	Ž	241	212	238	208	98.8% 98.1%
C44	Koža, drugi mal. tumori Skin, other malignomas	M	Ž	1679	1506	1621	1433	96.5% 95.2%
C45	Mezoteliom Mesothelioma	M	Ž	13	4	9	3	69.2% 75.0%
C46	Kaposijev sarkom Kaposi's sarcoma	M	Ž	6	2	6	2	100.0% 100.0%
C47	Periferni nervi i aut. ner. sis. Peripheral nerves & auton. nerv. sys.	M	Ž	4	8	2	4	50.0% 50.0%
C48	Peritoneum i retroperitoneum Retroperitoneum & peritoneum	M	Ž	26	41	20	21	76.9% 51.2%
C49	Veživna i meka tkiva, drugi Other connective and soft tissue	M	Ž	89	91	78	77	87.6% 84.6%
C50	Dojka Breast	M	Ž	54	3307	50	3103	92.6% 93.8%

**Tabela 22.1 Ukupan broj novoobolelih, broj i procenat histološki i citološki verifikovanih slučajeva raka prema primarnoj lokalizaciji i polu, centralna Srbija, 2009. godina (nastavak)**

*Table 22.1 Total number of new cancer cases, number and percentage of histologically and cytologically confirmed cancer cases by primary site and sex, Central Serbia 2009 (continued)*

MKB-10 (ICD-10) Šifra (Code) Ukupno (All)	Primarna lokalizacija Primary site	POL SEX M (Male) Ž (Female)	Ukupan broj novoobolelih All new cases		Broj histo. / cito. verifikovanih Number of cases histo./ cyto. confirmed		%
			14012	12424	88.7%		
			12651	11405	90.2%		
C51	Vulva Vulva	Ž	87	86	98.9%		
C52	Vagina Vagina	Ž	16	14	87.5%		
C53	Grlić materice Cervix uteri	Ž	1104	1084	98.2%		
C54	Materica, telo Corpus uteri	Ž	719	564	78.4%		
C55	Materica, neozna-eni deo Uterus, unspecified part	Ž	27	26	96.3%		
C56	Jajnik Ovary	Ž	430	412	95.8%		
C57	Ženski gen. org., dr. neoz. lok. Other & unspec. parts of fem. gen. org.	Ž	18	14	77.8%		
C58	Placenta Placenta	Ž	1	1	100.0%		
C60	Penis Penis	M	34 0	27	79.4%		
C61	Prostata Prostate	M	1673	1282	76.6%		
C62	Testis Testis	M	186	184	98.9%		
C63	Muški gen. org., dr. neoz. org. Other & unspec. male genital organs	M	5	1	20.0%		
C64	Bubreg Kidney, except renal pelvis	M Ž	260 167	218 137	83.8% 82.0%		
C65	Bubrežna karlica Renal pelvis	M Ž	17 21	15 19	88.2% 90.5%		
C66	Ureter Ureter	M Ž	11 10	9 9	81.8% 90.0%		
C67	Mokraćna bešika Bladder	M Ž	789 261	692 215	87.7% 82.4%		
C68	Urinarni organi, dr. neoz. org. Other & unspecified urinary organs	M Ž	4 6	1 1	25.0% 16.7%		
C69	Okno, pripoji oka Eye and adnexa	M Ž	29 31	11 15	37.9% 48.4%		
C70	Moždance Meninges	M Ž	14 13	11 11	78.6% 84.6%		
C71	Mozak Brain	M Ž	305 253	288 239	94.4% 94.5%		
C72	Centralni ner. sis., dr. delovi Spinal cord, cran. nerv. & oth. parts of CNS	M Ž	18 7	9 7	50.0% 100.0%		
C73	Štitasta žlezda Thyroid gland	M Ž	42 160	40 155	95.2% 96.9%		
C74	Nadbubrežna žlezda Adrenal gland	M Ž	17 15	16 14	94.1% 93.3%		
C75	Endokrine žlezde, druge Oth. endoc. gl. & related structures	M Ž	7 5	4 3	57.1% 60.0%		
C76	Ostale lokalizacije Other & ill defined sites	M Ž	61 51	11 22	18.0% 43.1%		
C77-C80	Sekundarne lok., bez ozn. lok. Unspec. mal. neo. of lymph nod. & without of spec. of site	M Ž	311 241	210 130	67.5% 53.9%		
C81	Hodgkinova bolest Hodgkin's disease	M Ž	72 58	71 56	98.6% 96.6%		
C82	Ne-Hodgkinov lim., folikularni Follicular non-Hodgkin's lymphoma	M Ž	52 58	50 56	96.2% 96.6%		
C83	Ne-Hodgkinov lim., difuzni Diffuse non-Hodgkin's lymphoma	M Ž	100 76	43 39	43.0% 51.3%		
C84	Periferni i kožni lim. T-ćelija Peripheral & cutaneous T-cell lymphomas	M Ž	8 3	4 1	50.0% 33.3%		
C85	Ne-Hodgkinovi limfomi, drugi Oth. & unspec. types of non-Hodgkin's lymphoma	M Ž	65 73	63 71	96.9% 97.3%		
C88	Zloćudne imunoprolifer. bolesti Malignant immunoproliferative diseases	M Ž	7 4	6 3	85.7% 75.0%		
C90	Mult. mijelom i zloć. tum. plaz. ćel. Multiple myeloma and malignant plasma cell neoplasms	M Ž	77 68	73 59	94.8% 86.8%		
C91	Limfoidna leukemija Lymphoblastic, lymphoid leukaemia	M Ž	115 75	114 74	99.1% 98.7%		
C92	Mijeloidna leukemija Myeloid leukaemia	M Ž	87 57	86 56	98.9% 98.2%		
C93	Monocitna leukemija Monocytic leukaemia	M Ž	8 3	7 3	87.5% 100.0%		
C94	Leukemije, druge Other leukaemias of specified cells	M Ž	4 1	4 1	100.0% 100.0%		
C95	Leukemije, neozna-ene Leukaemia, unspecified cell type	M Ž	19 12	17 10	89.5% 83.3%		
C96	Dr. zloć. tum. hematop. sist. Oth. & unspec. mal. neo. of lymph., haematopoietic & related tissue	M Ž	0 2	0 2	100.0% 100.0%		
C00-C96 (C44)	Sve lokalizacije, bez kože All sites but skin	M Ž	12333 11145	10803 9972	87.6% 89.5%		

Tabela 23. Broj novoobolelih i incidencija od raka na 100.000 stanovnika prema primarnoj lokalizaciji, uzrastu i polu, centralna Srbija, 2009. godina

Table 23. Number of new cancer cases and cancer incidence rates per 100.000 population by primary site, age and sex, Central Serbia, 2009

MKB-10 (ICD-10) Šifra (Code) Ukupno (All)	Primarna lokalizacija Primary site	POL SEX		Ukupno (All) 14012 12651	Sirova incid. Crude rate 538.3 460.1	Standardizovana incidencija (Stand. incidence)		TRUNC 155.2 164.3
		M (Male)	Ž (Female)			ASR(E) 427.1 348.6	ASR(W) 304.7 258.6	
C00	Usna Lip	M	90	3.5	2.7	1.8	0.9	
		Ž	28	1.0	0.7	0.4	0.2	
C01	Jezik, koren Base of tongue	M	22	0.8	0.7	0.5	0.3	
		Ž	3	0.1	0.1	0.0	0.0	
C02	Jezik, drugi delovi Tongue, other & unspecified parts	M	50	1.9	1.6	1.1	0.9	
		Ž	13	0.5	0.3	0.2	0.2	
C03	Desni Gum	M	16	0.6	0.5	0.4	0.3	
		Ž	4	0.1	0.1	0.1	0.1	
C04	Pod usta Floor of mouth	M	47	1.8	1.5	1.1	0.9	
		Ž	22	0.8	0.6	0.4	0.2	
C05	Nepce Palate	M	14	0.5	0.5	0.4	0.3	
		Ž	6	0.2	0.2	0.2	0.1	
C06	Usta, drugi delovi Mouth, other & unspecified parts	M	10	0.4	0.3	0.2	0.1	
		Ž	26	0.9	0.9	0.7	0.5	
C07	Parotidna žlezda Parotid gland	M	15	0.6	0.4	0.3	0.2	
		Ž	16	0.6	0.4	0.3	0.1	
C08	Piljuvačna žlezda Other & unspec. major salivary gl.	M	10	0.4	0.3	0.2	0.1	
		Ž	14	0.5	0.3	0.2	0.1	
C09	Krajnik Tonsil	M	31	1.2	0.9	0.7	0.4	
		Ž	9	0.3	0.2	0.1	0.1	
C10	Orofarings Oropharynx	M	36	1.4	1.2	0.9	0.7	
		Ž	22	0.8	0.5	0.4	0.3	
C11	Nasofarings Nasopharynx	M	52	2.0	1.8	1.4	1.0	
		Ž	15	0.5	0.4	0.3	0.2	
C12	Piriformni sinus Pyriform sinus	M	2	0.1	0.1	0.0	0.0	
		Ž	1	0.0	0.0	0.0	0.0	
C13	Hipofarings Hypopharynx	M	100	3.8	3.2	2.3	1.7	
		Ž	13	0.5	0.4	0.3	0.2	
C14	Usne, usta, ždrelo, drugi delovi Other & ill def. sites in the lip oral cavity & pharynx	M	17	0.7	0.5	0.4	0.3	
		Ž	9	0.3	0.3	0.2	0.2	
C15	Jednjak Oesophagus	M	176	6.8	5.6	4.1	2.9	
		Ž	32	1.2	0.9	0.6	0.3	
C16	Želudac Stomach	M	536	20.6	16.0	10.9	5.1	
		Ž	284	10.3	7.0	4.8	2.5	
C17	Tanko crevo Small intestine	M	25	1.0	0.8	0.6	0.3	
		Ž	18	0.7	0.5	0.3	0.2	
C18	Debelo crevo Colon	M	946	36.3	28.5	19.9	10.2	
		Ž	600	21.8	15.6	11.2	6.7	
C19	Rektosigmoidni prelaz Rectosigmoid junction	M	111	4.3	3.4	2.4	1.0	
		Ž	72	2.6	1.8	1.2	0.7	
C20	Rektum Rectum	M	636	24.4	19.2	13.4	7.1	
		Ž	385	14.0	9.5	6.7	3.6	
C21	Anus i analni kanal Anus & anal canal	M	14	0.5	0.4	0.3	0.2	
		Ž	13	0.5	0.3	0.2	0.2	
C22	Jetra, žučni kanali Liver & intrahepatic bile ducts	M	256	9.8	7.5	5.1	2.4	
		Ž	191	6.9	4.5	3.1	1.3	
C23	Žu-na kesa Gallbladder	M	42	1.6	1.2	0.8	0.3	
		Ž	76	2.8	1.7	1.2	0.5	
C24	Žu-ni kanali, drugi delovi Biliary tract, other & unspec. parts	M	17	0.7	0.5	0.3	0.1	
		Ž	29	1.1	0.8	0.6	0.4	
C25	Pankreas Pancreas	M	312	12.0	9.5	6.6	3.8	
		Ž	258	9.4	6.4	4.5	2.4	
C26	Org. za var., neodređ. lok. Other & ill-defined digestive organs	M	26	1.0	0.8	0.5	0.3	
		Ž	27	1.0	0.6	0.4	0.1	
C30	Nosna šupljina i srednje uvo Nasal cavity & middle ear	M	17	0.7	0.5	0.3	0.2	
		Ž	14	0.5	0.3	0.2	0.1	
C31	Nosni sinusi Accessory sinuses	M	24	0.9	0.7	0.5	0.3	
		Ž	7	0.3	0.2	0.1	0.1	
C32	Larings Larynx	M	506	19.4	16.1	11.6	8.1	
		Ž	54	2.0	1.6	1.2	0.8	
C33	Traheja Trachea	M	10	0.4	0.3	0.2	0.2	
		Ž	5	0.2	0.1	0.1	0.1	
C34	Bronh i pluća Bronchus & lung	M	3183	122.3	98.4	69.9	43.0	
		Ž	975	35.5	26.1	18.7	12.6	
C37	Timus Thymus	M	4	0.2	0.1	0.1	0.0	
		Ž	4	0.1	0.1	0.1	0.1	
C38	Srce, mediastinum, pleura Heart, mediastinum & pleura	M	41	1.6	1.2	0.9	0.5	
		Ž	18	0.7	0.5	0.3	0.2	
C39	Toraks, druge lokalizacije Other & ill-def. in the res. sys. & intrath. org.	M	5	0.2	0.1	0.1	0.1	
		Ž	5	0.2	0.2	0.1	0.0	
C40	Kosti i zglob. hrskavice udova Bone & articular cartilage of limbs	M	60	2.3	2.5	2.8	0.4	
		Ž	50	1.8	1.8	2.0	0.2	
C41	Kosti i zglob. hrskav., dr. lok. Bone & artic. cart. of other & unspec. parts	M	44	1.7	1.4	1.1	0.5	
		Ž	29	1.1	0.9	0.7	0.4	
C43	Koža, maligni melanom Malignant melanoma of skin	M	241	9.3	7.6	5.5	3.3	
		Ž	212	7.7	6.0	4.5	2.7	
C44	Koža, drugi mal. tumori Skin, other malignomas	M	1679	64.5	49.1	33.5	14.0	
		Ž	1506	54.8	36.4	25.2	11.5	
C45	Mezoteliom Mesothelioma	M	13	0.5	0.4	0.3	0.0	
		Ž	4	0.1	0.1	0.1	0.0	
C46	Kaposijev sarkom Kaposi's sarcoma	M	6	0.2	0.2	0.1	0.1	
		Ž	2	0.1	0.1	0.1	0.0	
C47	Periferni nervi i aut. ner. sis. Peripheral nerves & auton. nerv. sys.	M	4	0.2	0.1	0.1	0.0	
		Ž	8	0.3	0.3	0.3	0.1	
C48	Peritoneum i retroperitoneum Retroperitoneum & peritoneum	M	26	1.0	0.8	0.6	0.4	
		Ž	41	1.5	1.1	0.9	0.4	
C49	Vezivna i meka tkiva, drugi Other connective and soft tissue	M	89	3.4	3.0	2.5	1.3	
		Ž	91	3.3	2.7	2.1	1.4	
C50	Dojka Breast	M	54	2.1	1.6	1.1	0.6	
		Ž	3307	120.3	95.8	71.5	53.3	

Tabela 23.1 Broj novoobolelih i incidencija od raka na 100.000 stanovnika prema primarnoj lokalizaciji, uzrastu i polu, centralna Srbija, 2009. godina (nastavak)

Table 23.1 Number of new cancer cases and cancer incidence rates per 100.000 population by primary site, age and sex, Central Serbia, 2009 (continued)

MKB-10 (ICD-10) Šifra (Code) Ukupno (All)	Primarna lokalizacija Primary site	POL	Ukupno (All) 14012	Sirova incid. Crude rate 538.3	Standardizovana incidencija (Stand. incidence)		
		SEX			ASR(E)	ASR(W)	TRUNC
		M (Male)			427.1	304.7	155.2
		Ž (Female)	12651	460.1	348.6	258.6	164.3
C51	Vulva <i>Vulva</i>	Ž	87	3.2	2.1	1.4	0.7
C52	Vagina <i>Vagina</i>	Ž	16	0.6	0.5	0.4	0.2
C53	Grlić materice <i>Cervix uteri</i>	Ž	1104	40.2	34.8	27.1	21.4
C54	Materica, telo <i>Corpus uteri</i>	Ž	719	26.1	19.9	14.4	10.1
C55	Materica, neoznačeni deo <i>Uterus, unspecified part</i>	Ž	27	1.0	0.7	0.5	0.4
C56	Jajnik <i>Ovary</i>	Ž	430	15.6	12.5	9.6	6.4
C57	Ženski gen. org., dr. neoz. lok. <i>Other &amp; unspec. parts of fem. gen. org.</i>	Ž	18	0.7	0.4	0.3	0.1
C58	Placenta <i>Placenta</i>	Ž	1	0.0	0.0	0.0	0.0
C60	Penis <i>Penis</i>	M	34	1.3	1.0	0.7	0.4
C61	Prostata <i>Prostate</i>	M	1673	64.3	46.2	29.8	7.7
C62	Testis <i>Testis</i>	M	186	7.1	7.0	6.6	2.1
C63	Muški gen. org., dr. neoz. org. <i>Other &amp; unspec. male genital organs</i>	M	5	0.2	0.2	0.1	0.1
C64	Bubreg <i>Kidney, except renal pelvis</i>	M	260	10.0	8.1	5.8	3.8
C65	Bubrežna karlica <i>Renal pelvis</i>	Ž	167	6.1	4.3	3.1	1.7
C66	Ureter <i>Ureter</i>	M	17	0.7	0.5	0.4	0.1
C67	Mokraćna bešika <i>Bladder</i>	Ž	21	0.8	0.5	0.4	0.1
C68	Ureter <i>Ureter</i>	M	11	0.4	0.3	0.2	0.1
C67	Mokraćna bešika <i>Bladder</i>	M	10	0.4	0.3	0.2	0.1
C68	Urinarni organi, dr. neoz. org. <i>Other &amp; unspecified urinary organs</i>	M	789	30.3	23.5	16.3	8.0
C69	Okno, pripoji oka <i>Eye and adnexa</i>	Ž	261	9.5	6.5	4.5	2.6
C69	Okno, pripoji oka <i>Eye and adnexa</i>	M	4	0.2	0.1	0.1	0.0
C70	Moždanice <i>Meninges</i>	Ž	6	0.2	0.1	0.1	0.0
C70	Moždanice <i>Meninges</i>	M	29	1.1	0.9	0.7	0.4
C71	Mozak <i>Brain</i>	Ž	31	1.1	0.9	0.8	0.4
C71	Mozak <i>Brain</i>	M	14	0.5	0.5	0.5	0.2
C72	Centralni ner. sis., dr. delovi <i>Spinal cord, cran. nerv. &amp; oth. parts of CNS</i>	Ž	13	0.5	0.4	0.3	0.2
C72	Centralni ner. sis., dr. delovi <i>Spinal cord, cran. nerv. &amp; oth. parts of CNS</i>	M	305	11.7	10.2	8.3	4.3
C73	Štitasta žlezda <i>Thyroid gland</i>	Ž	253	9.2	7.7	6.6	3.0
C73	Štitasta žlezda <i>Thyroid gland</i>	M	18	0.7	0.6	0.6	0.2
C74	Nadbubrežna žlezda <i>Adrenal gland</i>	Ž	7	0.3	0.2	0.1	0.1
C74	Nadbubrežna žlezda <i>Adrenal gland</i>	M	42	1.6	1.4	1.1	0.6
C75	Endokrine žlezde, druge <i>Oth. endoc. gl. &amp; related structures</i>	Ž	160	5.8	5.0	4.0	2.8
C75	Endokrine žlezde, druge <i>Oth. endoc. gl. &amp; related structures</i>	M	17	0.7	0.6	0.6	0.2
C76	Ostale lokalizacije <i>Other &amp; ill defined sites</i>	Ž	15	0.5	0.5	0.5	0.3
C76	Ostale lokalizacije <i>Other &amp; ill defined sites</i>	M	7	0.3	0.2	0.2	0.0
C77-C80	Sekundarne lok., bez ozn. lok. <i>Unspec.mal.neo. of lymph nod. &amp; without of spec.of site</i>	Ž	5	0.2	0.2	0.1	0.1
C77-C80	Sekundarne lok., bez ozn. lok. <i>Unspec.mal.neo. of lymph nod. &amp; without of spec.of site</i>	M	61	2.3	1.9	1.3	0.7
C81	Hodgkinova bolest <i>Hodgkin's disease</i>	Ž	51	1.9	1.3	0.9	0.4
C81	Hodgkinova bolest <i>Hodgkin's disease</i>	M	311	11.9	9.9	7.5	3.8
C82	Ne-Hodgkinov lim., folikularni <i>Follicular non-Hodgkin's lymphoma</i>	Ž	241	8.8	6.6	5.0	2.6
C82	Ne-Hodgkinov lim., folikularni <i>Follicular non-Hodgkin's lymphoma</i>	M	72	2.8	2.6	2.3	1.2
C83	Ne-Hodgkinov lim., difuzni <i>Diffuse non-Hodgkin's lymphoma</i>	Ž	58	2.1	2.0	1.9	0.6
C83	Ne-Hodgkinov lim., difuzni <i>Diffuse non-Hodgkin's lymphoma</i>	M	58	2.1	1.8	1.4	0.8
C84	Periferni i kožni lim. T-ćelija <i>Peripheral &amp; cutaneous T-cell lymphomas</i>	Ž	76	2.8	2.0	1.5	0.9
C84	Periferni i kožni lim. T-ćelija <i>Peripheral &amp; cutaneous T-cell lymphomas</i>	M	8	0.3	0.3	0.2	0.2
C85	Ne-Hodgkinovi limfomi, drugi <i>Oth. &amp; unspec. types of non-Hodgkin's lymphoma</i>	Ž	3	0.1	0.1	0.1	0.0
C85	Ne-Hodgkinovi limfomi, drugi <i>Oth. &amp; unspec. types of non-Hodgkin's lymphoma</i>	M	65	2.5	2.0	1.6	0.7
C88	Zloćudne imunoprolifer. bolesti <i>Malignant immunoproliferative diseases</i>	Ž	73	2.7	1.9	1.4	0.6
C88	Zloćudne imunoprolifer. bolesti <i>Malignant immunoproliferative diseases</i>	M	7	0.3	0.2	0.1	0.0
C90	Mult. mijelom i zloć. tum. plaz. ćel. <i>Multiple myeloma and malignant plasma cell neoplasms</i>	Ž	4	0.1	0.1	0.1	0.1
C90	Mult. mijelom i zloć. tum. plaz. ćel. <i>Multiple myeloma and malignant plasma cell neoplasms</i>	M	77	3.0	2.4	1.7	1.0
C91	Limfoidna leukemija <i>Lymphoblastic, lymphoid leukaemia</i>	Ž	68	2.5	1.8	1.3	0.7
C91	Limfoidna leukemija <i>Lymphoblastic, lymphoid leukaemia</i>	M	115	4.4	3.8	3.3	1.0
C92	Mijeloidna leukemija <i>Myeloid leukaemia</i>	Ž	75	2.7	2.1	1.9	0.4
C92	Mijeloidna leukemija <i>Myeloid leukaemia</i>	M	87	3.3	2.9	2.3	1.3
C93	Monocitna leukemija <i>Monocytic leukaemia</i>	Ž	57	2.1	1.6	1.3	0.7
C93	Monocitna leukemija <i>Monocytic leukaemia</i>	M	8	0.3	0.2	0.2	0.1
C94	Leukemije, druge <i>Other leukaemias of specified cells</i>	Ž	3	0.1	0.1	0.1	0.0
C94	Leukemije, druge <i>Other leukaemias of specified cells</i>	M	4	0.2	0.1	0.1	0.0
C95	Leukemije, neoznačene <i>Leukaemia, unspecified cell type</i>	Ž	1	0.0	0.0	0.0	0.0
C95	Leukemije, neoznačene <i>Leukaemia, unspecified cell type</i>	M	19	0.7	0.6	0.5	0.2
C96	Dr. zloć. tum. hematop. sist. <i>Oth.&amp;unspec.mal.neo. of lymph.,haematopoietic &amp; related tissu</i>	Ž	12	0.4	0.4	0.4	0.2
C96	Dr. zloć. tum. hematop. sist. <i>Oth.&amp;unspec.mal.neo. of lymph.,haematopoietic &amp; related tissu</i>	M	0	0.0	0.0	0.0	0.0
C00-C96	Sve lokalizacije, bez kože	Ž	2	0.1	0.1	0.1	0.0
(C44)	All sites but skin	M	12333	473.8	378.0	271.1	141.2
		Ž	11145	405.3	312.2	233.4	152.8

Tabela 24. Broj umrlih i mortalitet od raka na 100.000 stanovnika prema primarnoj lokalizaciji, uzrastu i polu, centralna Srbija, 2009. godina

Table 24. Number of death cancer cases and cancer mortality rates per 100.000 population by primary site, age and sex, Central Serbia, 2009

MKB-10 (ICD-10) Šifra (Code) Ukupno (All)	Primarna lokalizacija Primary site	POL		Ukupno (All) 8506 6536	Sirovi mort. Crude rate 326.8 237.7	Standardizovani mortalitet (Stand. mortality)		
		SEX				ASR(E) 249.4 158.5	ASR(W) 169.5 109.5	TRUNC 78.1 56.2
		M (Male)	Ž (Female)					
C00	Usna Lip	M	12	0.5	0.3	0.2	0.0	
		Ž	5	0.2	0.1	0.0	0.0	
C01	Jezik, koren Base of tongue	M	19	0.7	0.6	0.5	0.3	
		Ž	1	0.0	0.0	0.0	0.0	
C02	Jezik, drugi delovi Tongue, other & unspecified parts	M	39	1.5	1.2	0.9	0.7	
		Ž	8	0.3	0.2	0.1	0.1	
C03	Desni Gum	M	1	0.0	0.0	0.0	0.0	
		Ž	0	0.0	0.0	0.0	0.0	
C04	Pod usta Floor of mouth	M	25	1.0	0.8	0.6	0.4	
		Ž	6	0.2	0.2	0.1	0.1	
C05	Nepce Palate	M	6	0.2	0.2	0.1	0.1	
		Ž	3	0.1	0.1	0.1	0.0	
C06	Usta, drugi delovi Mouth, other & unspecified parts	M	7	0.3	0.2	0.2	0.1	
		Ž	6	0.2	0.1	0.1	0.0	
C07	Parotidna žlezda Parotid gland	M	14	0.5	0.4	0.3	0.1	
		Ž	7	0.3	0.1	0.1	0.0	
C08	Pljučna žlezda Other & unspec. major salivary gl.	M	3	0.1	0.1	0.0	0.0	
		Ž	4	0.1	0.1	0.1	0.0	
C09	Krajnik Tonsil	M	17	0.7	0.6	0.4	0.3	
		Ž	4	0.1	0.1	0.1	0.0	
C10	Orofarings Oropharynx	M	19	0.7	0.6	0.4	0.3	
		Ž	6	0.2	0.1	0.1	0.0	
C11	Nasofarings Nasopharynx	M	21	0.8	0.7	0.5	0.3	
		Ž	7	0.3	0.2	0.2	0.1	
C12	Piriformni sinus Pyriform sinus	M	0	0.0	0.0	0.0	0.0	
		Ž	0	0.0	0.0	0.0	0.0	
C13	Hipofarings Hypopharynx	M	65	2.5	2.1	1.5	1.1	
		Ž	11	0.4	0.3	0.2	0.2	
C14	Usne, usta, ždrello, drugi delovi Other & ill def. sites in the lip oral cavity & pharynx	M	9	0.3	0.3	0.2	0.1	
		Ž	0	0.0	0.0	0.0	0.0	
C15	Jednjak Oesophagus	M	155	6.0	4.8	3.4	2.2	
		Ž	42	1.5	1.0	0.7	0.4	
C16	Želudac Stomach	M	548	21.1	15.9	10.7	4.3	
		Ž	311	11.3	7.3	4.9	2.3	
C17	Tanko crevo Small intestine	M	12	0.5	0.3	0.2	0.1	
		Ž	8	0.3	0.2	0.1	0.1	
C18	Debelo crevo Colon	M	517	19.9	14.5	9.4	3.5	
		Ž	400	14.5	9.0	5.9	2.3	
C19	Rektosigmoidni prelaz Rectosigmoid junction	M	39	1.5	1.2	0.8	0.4	
		Ž	26	0.9	0.7	0.5	0.2	
C20	Rektum Rectum	M	498	19.1	14.3	9.5	3.8	
		Ž	317	11.5	7.1	4.6	1.9	
C21	Anus i analni kanal Anus & anal canal	M	8	0.3	0.2	0.2	0.1	
		Ž	3	0.1	0.1	0.0	0.0	
C22	Jetra, žučni kanali Liver & intrahepatic bile ducts	M	327	12.6	9.4	6.3	2.7	
		Ž	234	8.5	5.3	3.6	1.6	
C23	Žučna kesha Gallbladder	M	36	1.4	1.0	0.7	0.3	
		Ž	103	3.7	2.3	1.5	0.6	
C24	Žučni kanali, drugi delovi Biliary tract, other & unspec. parts	M	48	1.8	1.4	0.9	0.4	
		Ž	38	1.4	0.8	0.5	0.2	
C25	Pankreas Pancreas	M	402	15.4	11.9	8.1	3.6	
		Ž	358	13.0	7.9	5.2	2.1	
C26	Org. za var., neodred. lok. Other & ill-defined digestive organs	M	10	0.4	0.3	0.1	0.0	
		Ž	25	0.9	0.5	0.3	0.2	
C30	Nosna šupljina i srednje uvo Nasal cavity & middle ear	M	10	0.4	0.3	0.2	0.1	
		Ž	2	0.1	0.0	0.0	0.0	
C31	Nosni sinusi Accessory sinuses	M	4	0.2	0.1	0.1	0.1	
		Ž	2	0.1	0.1	0.1	0.0	
C32	Larings Larynx	M	292	11.2	8.8	6.1	3.7	
		Ž	22	0.8	0.5	0.3	0.2	
C33	Traheja Trachea	M	5	0.2	0.2	0.1	0.1	
		Ž	6	0.2	0.2	0.2	0.2	
C34	Bronh i pluća Bronchus & lung	M	2566	98.6	77.4	53.8	29.2	
		Ž	904	32.9	22.9	16.0	9.3	
C37	Timus Thymus	M	2	0.1	0.1	0.0	0.0	
		Ž	3	0.1	0.1	0.1	0.1	
C38	Srce, mediastinum, pleura Heart, mediastinum & pleura	M	37	1.4	1.1	0.7	0.3	
		Ž	16	0.6	0.4	0.3	0.0	
C39	Toraks, druge lokalizacije Other & ill-def. in the res. sys. & intrath. org.	M	2	0.1	0.0	0.0	0.0	
		Ž	1	0.0	0.0	0.0	0.0	
C40	Kosti i zglob. hrskavice udova Bone & articular cartilage of limbs	M	20	0.8	0.7	0.7	0.2	
		Ž	14	0.5	0.4	0.5	0.0	
C41	Kosti i zglob. hrskav., dr. lok. Bone & artic. cart. of other & unspec. parts	M	38	1.5	1.1	0.8	0.3	
		Ž	18	0.7	0.4	0.3	0.1	
C43	Koža, maligni melanom Malignant melanoma of skin	M	105	4.0	3.2	2.3	1.3	
		Ž	78	2.8	2.0	1.4	0.9	
C44	Koža, drugi mal. tumori Skin, other malignomas	M	59	2.3	1.6	1.0	0.4	
		Ž	53	1.9	1.0	0.6	0.1	
C45	Mezoteliom Mesothelioma	M	15	0.6	0.5	0.3	0.2	
		Ž	3	0.1	0.1	0.0	0.0	
C46	Kaposijev sarkom Kaposi's sarcoma	M	2	0.1	0.1	0.1	0.0	
		Ž	4	0.1	0.1	0.1	0.0	
C47	Periferni nervi i aut. ner. sis. Peripheral nerves & auton. nerv. sys.	M	3	0.1	0.1	0.1	0.0	
		Ž	2	0.1	0.1	0.0	0.0	
C48	Peritoneum i retroperitoneum Retroperitoneum & peritoneum	M	18	0.7	0.6	0.4	0.2	
		Ž	36	1.3	0.9	0.7	0.3	
C49	Vezivna i meka tkiva, drugi Other connective and soft tissue	M	22	0.8	0.7	0.5	0.1	
		Ž	13	0.5	0.4	0.4	0.2	
C50	Dojka Breast	M	24	0.9	0.6	0.4	0.2	
		Ž	1145	41.6	29.0	20.3	12.2	



Tabela 24.1 Broj umrlih i mortalitet od raka na 100.000 stanovnika prema primarnoj lokalizaciji, uzrastu i polu, centralna Srbija, 2009. godina (nastavak)

Table 24.1 Number of death cancer cases and cancer mortality rates per 100.000 population by primary site, age and sex, Central Serbia, 2009 (continued)

MKB-10 (ICD-10) Šifra (Code) Ukupno (All)	Primarna lokalizacija Primary site	POL	Ukupno (All) 8506 6536	Sirovi mort. Crude rate 326.8 237.7	Standardizovani mortalitet (Stand. mortality)		
		SEX M (Male) Ž (Female)			ASR(E) 249.4 158.5	ASR(W) 169.5 109.5	TRUNC 78.1 56.2
C51	Vulva <i>Vulva</i>	Ž	53	1.9	1.1	0.7	0.1
C52	Vagina <i>Vagina</i>	Ž	7	0.3	0.1	0.1	0.0
C53	Grič materice <i>Cervix uteri</i>	Ž	358	13.0	9.6	6.9	4.8
C54	Materica, telo <i>Corpus uteri</i>	Ž	140	5.1	3.3	2.2	1.1
C55	Materica, neoznačeni deo <i>Uterus, unspecified part</i>	Ž	76	2.8	1.8	1.3	0.7
C56	Jajnik <i>Ovary</i>	Ž	296	10.8	7.7	5.5	3.3
C57	Ženski gen. org., dr. neoz. lok. <i>Other &amp; unspec. parts of fem. gen. org.</i>	Ž	10	0.4	0.2	0.2	0.1
C58	Placenta <i>Placenta</i>	Ž	0	0.0	0.0	0.0	0.0
C60	Penis <i>Penis</i>	M	8	0.3	0.2	0.2	0.1
C61	Prostata <i>Prostate</i>	M	720	27.7	18.6	10.8	1.3
C62	Testis <i>Testis</i>	M	23	0.9	0.8	0.8	0.2
C63	Muški gen. org., dr. neoz. org. <i>Other &amp; unspec. male genital organs</i>	M	2	0.1	0.1	0.0	0.0
C64	Bubreg <i>Kidney, except renal pelvis</i>	M Ž	142 103	5.5 3.7	4.1 2.3	2.7 1.5	1.3 0.6
C65	Bubrežna karlica <i>Renal pelvis</i>	M Ž	5 3	0.2 0.1	0.1 0.1	0.1 0.1	0.1 0.0
C66	Ureter <i>Ureter</i>	M Ž	8 4	0.3 0.1	0.2 0.1	0.1 0.1	0.0 0.0
C67	Mokraćna bešika <i>Bladder</i>	M Ž	312 116	12.0 4.2	8.5 2.3	5.3 1.4	1.6 0.4
C68	Urinarni organi, dr. neoz. org. <i>Other &amp; unspecified urinary organs</i>	M Ž	0 0	0.0 0.0	0.0 0.0	0.0 0.0	0.0 0.0
C69	Oko, pripoji oka <i>Eye and adnexa</i>	M Ž	10 6	0.4 0.2	0.3 0.1	0.2 0.1	0.1 0.0
C70	Moždanice <i>Meninges</i>	M Ž	11 11	0.4 0.4	0.4 0.2	0.3 0.2	0.2 0.1
C71	Mozak <i>Brain</i>	M Ž	275 234	10.6 8.5	8.6 6.3	6.4 4.8	3.3 2.6
C72	Centralni ner. sis., dr. delovi <i>Spinal cord, cran. nerv. &amp; oth. parts of CNS</i>	M Ž	8 8	0.3 0.3	0.3 0.2	0.2 0.1	0.1 0.1
C73	Štitasta žlezda <i>Thyroid gland</i>	M Ž	10 24	0.4 0.9	0.3 0.5	0.2 0.4	0.1 0.1
C74	Nadbubrežna žlezda <i>Adrenal gland</i>	M Ž	15 7	0.6 0.3	0.5 0.2	0.4 0.2	0.2 0.0
C75	Endokrine žlezde, druge <i>Oth. endoc. gl. &amp; related structures</i>	M Ž	4 4	0.2 0.1	0.1 0.1	0.1 0.1	0.0 0.1
C76	Ostale lokalizacije <i>Other &amp; ill defined sites</i>	M Ž	59 122	2.3 4.4	1.6 2.6	1.0 1.7	0.4 0.6
C77-C80	Sekundarne lok., bez ozn. lok. <i>Unspec. mal. neo. of lymph. nod. &amp; without of spec. of site</i>	M Ž	352 300	13.5 10.9	10.3 7.0	7.0 4.8	3.2 2.1
C81	Hodgkinova bolest <i>Hodgkin's disease</i>	M Ž	30 22	1.2 0.8	1.0 0.7	0.8 0.6	0.4 0.2
C82	Ne-Hodgkinov lim., folikularni <i>Follicular non-Hodgkin's lymphoma</i>	M Ž	13 10	0.5 0.4	0.4 0.2	0.3 0.2	0.2 0.1
C83	Ne-Hodgkinov lim., difuzni <i>Diffuse non-Hodgkin's lymphoma</i>	M Ž	35 45	1.3 1.6	1.1 1.1	0.8 0.8	0.5 0.4
C84	Periferni i kožni lim. T-ćelija <i>Peripheral &amp; cutaneous T-cell lymphomas</i>	M Ž	7 3	0.3 0.1	0.2 0.1	0.2 0.1	0.1 0.0
C85	Ne-Hodgkinovi limfomi, drugi <i>Oth. &amp; unspec. types of non-Hodgkin's lymphoma</i>	M Ž	79 73	3.0 2.7	2.3 1.7	1.6 1.2	0.7 0.5
C88	Zloćudne imunoprolifer. bolesti <i>Malignant immunoproliferative diseases</i>	M Ž	7 0	0.3 0.0	0.2 0.0	0.1 0.0	0.0 0.0
C90	Mult. mijelom i zloć. tum. plaz. ćel. <i>Multiple myeloma and malignant plasma cell neoplasms</i>	M Ž	56 64	2.2 2.3	1.7 1.6	1.2 1.1	0.6 0.6
C91	Limfoidna leukemija <i>Lymphoblastic, lymphoid leukaemia</i>	M Ž	111 80	4.3 2.9	3.4 1.9	2.5 1.3	0.6 0.5
C92	Mijeloidna leukemija <i>Myeloid leukaemia</i>	M Ž	98 76	3.8 2.8	3.0 2.0	2.2 1.5	1.1 0.8
C93	Monocitna leukemija <i>Monocytic leukaemia</i>	M Ž	9 6	0.3 0.2	0.3 0.1	0.2 0.1	0.1 0.0
C94	Leukemije, druge <i>Other leukaemias of specified cells</i>	M Ž	0 2	0.0 0.1	0.0 0.0	0.0 0.0	0.0 0.0
C95	Leukemije, neoznačene <i>Leukaemia, unspecified cell type</i>	M Ž	15 15	0.6 0.5	0.4 0.3	0.2 0.2	0.1 0.1
C96	Dr. zloć. tum. hematop. sist. <i>Oth. &amp; unspec. mal. neo. of lymph., haematopoietic &amp; related tissues</i>	M Ž	1 3	0.0 0.1	0.0 0.1	0.0 0.1	0.0 0.1
C00-C96 (C44)	Sve lokalizacije, bez kože <i>All sites but skin</i>	M Ž	8447 6483	324.5 235.8	247.8 157.5	168.5 108.9	77.7 56.0