

Institut za javno zdravlje Srbije "Dr Milan Jovanović - Batut"  
Institute of Public Health of Serbia " Dr Milan Jovanović - Batut"  
Odeljenje za prevenciju i kontrolu nezaraznih bolesti  
Department for Prevention and Control of Noncommunicable Diseases



**INCIDENCIJA I MORTALITET OD RAKA  
U CENTRALNOJ SRBIJI**  
**CANCER INCIDENCE AND MORTALITY  
IN CENTRAL SERBIA**  
**2005**

**REGISTAR ZA RAK U CENTRALNOJ SRBIJI**  
**CANCER REGISTRY OF CENTRAL SERBIA**



ISBN 86-7358-030-7  
IZVEŠTAJ BR.7  
REPORT No. 7  
Beograd, 2008.

**Institut za javno zdravlje Srbije "Dr Milan Jovanović - Batut"**  
**Institute of Public Health of Serbia " Dr Milan Jovanović - Batut"**

**Odeljenje za prevenciju i kontrolu nezaraznih bolesti**  
**Department for Prevention and Control of Noncommunicable Diseases**

# **INCIDENCIJA I MORTALITET OD RAKA U CENTRALNOJ SRBIJI**

**CANCER INCIDENCE AND MORTALITY  
IN CENTRAL SERBIA**

# **2005**

**REGISTAR ZA RAK U CENTRALNOJ SRBIJI**  
**CANCER REGISTRY OF CENTRAL SERBIA**



**ISBN 86-7358-030-7**  
**IZVEŠTAJ BR. 7**  
**REPORT No. 7**  
**Beograd, 2008.**

**Izdavač**

Institut za javno zdravlje Srbije "Dr Milan Jovanović - Batut"

**Published by**

*Institute of Public Health of Serbia " Dr Milan Jovanović - Batut"*

**Direktor****Director**

Prim. dr sc. Tanja Knežević / *Tanja Knezevic, MD, PhD*

**Odeljenje za prevenciju i kontrolu nezaraznih bolesti****Department for Prevention and Control of Noncommunicable Diseases**

Mr sc. dr Dragan Miljuš / *Dragan Miljus, MD, M. Sc. - Head of Department*

Dr Snežana Živković / *Snezana Zivkovic, MD*

Sanja Savković, inženjer statistike / *Sanja Savkovic, statistics engineer*

Zorica Božić, viši dijetetski nutricionista / *Zorica Bozic, senior dietitian nutritionist*

**Uređivački odbor****Editorial Board**

Mr sc. dr Dragan Miljuš / *Dragan Miljus, MD, M. Sc.*

Dr Snežana Živković / *Snezana Zivkovic, MD*

**Dizajn i priprema za štampu****Design and typesetting**

Mr sc. dr Dragan Miljuš / *Dragan Miljus, MD, M. Sc.*

Dr Snežana Živković / *Snezana Zivkovic, MD*

Zorica Božić, viši dijetetski nutricionista / *Zorica Bozic, senior dietitian nutritionist*

**Lektor****Language editor**

Mr Tamara Gruden / *Mr Tamara Gruden*

**Korespondencija****Correspondence to**

Mr sc. dr Dragan Miljuš / *Dragan Miljus, MD, M. Sc.*

Dr Snežana Živković / *Snezana Zivkovic, MD*

Institut za javno zdravlje Srbije

Dr Subotića 5, 11 000 Beograd, Srbija

Tel: +381 (011) 2684 566/160, 115

Fax: +381 (011) 2684 140

E-mail: [nezaraznibatut@yahoo.com](mailto:nezaraznibatut@yahoo.com)

Web site://[www.batut.org.rs](http://www.batut.org.rs)

**Štampa****Printed by**

Tiraž / 500 primeraka

**Circulation / 500 copies**

# SADRŽAJ / CONTENTS

## Uvod i objašnjenja

### *Introduction and Comments*

## Tabele i slike / *Tables and Figures*

1. Broj stanovnika prema uzrastu i polu, centralna Srbija, 2005. godina  
*Population of Central Serbia by age and sex, 2005*
2. Broj stanovnika prema okruzima i polu, centralna Srbiji, 2005. godina  
*Population of Central Serbia by administrative regions by sex, 2005*
3. Stanovništvo prema uzrastu i polu, centralna Srbija, popis 2002. i 2005. godine  
*Population of Central Serbia by age sex, census 2002 and estimate 2005*
4. Broj novoobolelih osoba od raka prema polu, centralna Srbija, 1990 - 2005.  
*Number of new cancer cases by sex, Central Serbia, 1990 - 2005*
5. Broj umrlih osoba od raka prema polu, centralna Srbija, 1990 - 2005.  
*Number of death cancer cases by sex, Central Serbia, 1990 - 2005*
6. Standardizovana incidencija i mortalitet od raka na 100.000 stanovnika, centralna Srbija, 1990 – 2005 godina  
*Standardized cancer incidence and mortality rates per 100.000 population, Central Serbia, 1990 – 2005*
7. Standardizovane stope mortaliteta od vodećih lokalizacija raka na 100.000 stanovnika, muškarci, centralna Srbija, 1990 - 2005.god.  
*Standardized cancer mortality rates per 100.000 population, males, Central Serbia, 1990 - 2005*
8. Standardizovane stope mortaliteta od vodećih lokalizacija raka na 100.000 stanovnika, žene, centralna Srbija, 1990 - 2005.god.  
*Standardized cancer mortality rates per 100.000 population, females, Central Serbia, 1990 -2005*
9. Vodeće lokalizacije u obolevanju od raka prema polu, centralna Srbija, 2005. godina  
*The leading cancer sites by sex, Central Serbia, 2005*
10. Vodeće lokalizacije u umiranju od raka prema polu, centralna Srbija, 2005. godina  
*Deaths for leading cancer sites by sex, Central Serbia, 2005*
11. Broj novoobolelih slučajeva od raka prema vodećim lokalizacijama, okruzima i polu, centralna Srbija, 2005. godina  
*Number of new cancer cases by sex and leading primary sites, Central Serbia, 2005*
12. Sirove stope incidencije od raka prema vodećim lokalizacijama, okruzima i polu, centralna Srbija, 2005. godina  
*Crude cancer incidence rates by sex and leading primary sites, Central Serbia, 2005*

13. Standardizovane stope incidencije od raka prema vodećim lokalizacijama okruzima i polu, centralna Srbija, 2005. godina  
*Standardized cancer incidence rates by sex and leading primary sites, Central Serbia, 2005*
14. Broj umrlih slučajeva od raka prema prema vodećim lokalizacijama, okruzima i polu, centralna Srbija, 2005. godina  
*Number of death cancer cases by sex and leading primary sites, Central Serbia, 2005*
15. Sirove stope mortaliteta od raka prema vodećim lokalizacijama, okruzima i polu, centralna Srbija, 2005. godina  
*Crude cancer mortality rates by sex and leading primary sites, Central Serbia, 2005*
16. Standardizovane stope mortaliteta od raka prema vodećim lokalizacijama, okruzima i polu, centralna Srbija, 2005. godina  
*Standardized cancer mortality rates by sex and leading primary sites, Central Serbia, 2005*
17. Ukupan broj novoobolelih i broj novoobolelih od raka sa procentom registrovanih samo na osnovu prijave smrti, prema primarnoj lokalizaciji i polu, centralna Srbija, 2005. godina  
*Total number of new cancer cases and number and percentage of cases registered from death certificates only, of corpus uteri, Central Serbia, 2005*
18. Broj novoobolelih slučajeva od raka, prema primarnoj lokalizaciji, uzrastu i polu, centralna Srbija, 2005. godina  
*Number of new cancer cases by primary site, age and sex, Central Serbia, 2005*
19. Sirove i standardizovane stope incidencije od raka na 100 000 stanovnika, prema primarnoj lokalizaciji, uzrastu i polu, centralna Srbija, 2005. godina  
*Crude and standardized cancer incidence rates per 100 000 population by primary site, age and sex, Central Serbia, 2005*
20. Broj umrlih slučajeva od raka, prema primarnoj lokalizaciji, uzrastu i polu, centralna Srbija, 2005. godina  
*Number of death cancer cases by primary site, age and sex, Central Serbia, 2005*
21. Sirove i standardizovane stope mortaliteta od raka na 100 000 stanovnika, prema primarnoj lokalizaciji, uzrastu i polu, centralna Srbija, 2005. godina  
*Crude and standardized cancer mortality rates per 100 000 population by primary site, age and sex, Central Serbia, 2005*
22. Ukupan broj novoobolelih, broj i procenat histološki i citološki verifikovanih slučajeva raka prema primarnoj lokalizaciji i polu, centralna Srbija, 2005. godina  
*Total number of new cancer cases, number and percentage of histologically and cytologically confirmed cancer cases, by primary site and sex, Central Serbia, 2005*

23. Broj novoobolelih i incidencija od raka prema primarnoj lokalizaciji, uzrastu i polu, centralna Srbija, 2005. godina  
*Number of new cancer cases and cancer incidence rates by primary site, age and sex, Central Serbia, 2005*
24. Broj umrlih i mortalitet od raka prema primarnoj lokalizaciji, uzrastu i polu, centralna Srbija, 2005. godina  
*Number of death cancer cases and cancer mortality rates by primary site, age and sex, Central Serbia, 2005*

## UVOD

Populacioni registar za rak osnovan je u Srbiji 1970. godine na osnovu Plana statističkih istraživanja od interesa za Republiku (Sl. glasnik SRS br. 32/69).

U cilju primene jedinstvene metodologije u vođenju Registra u svim teritorijalnim jedinicama bivše Jugoslavije, 1986. godine doneti su Uputstvo o načinu i postupku prijavljivanja lica obolelih od malignih neoplazmi (Sl. list SFRJ, br. 3/86) i Pravilnik o obrascu Registra i načinu njegovog vođenja, obrascu prijave i postupku prijavljivanja i odjavljivanja određenih bolesti (Sl. glasnik SRS, br. 42/86).

Neprecizno uputstvo, nedovoljna edukacija zdravstvenih radnika, kao i nedostatak informatičke podrške imali su za posledicu subregistraciju novootkrivenih slučajeva raka, kao i relativno loš kvalitet podataka na samoj prijavi. U periodu od 1986. do 1995. godine, broj obolelih slučajeva malignih tumora koji su prijavljeni Registru bio je približno isti ili čak i manji od broja umrlih od raka.

Polazeći od zakonske obaveze i uloge Registra (pre svega, za procenu opterećenosti društva rakom, donošenje programa primarne prevencije, planiranje onkološke zdravstvene zaštite, kao i za klinička i epidemioloških istraživanja), u toku 1996. godine pristupljeno je njegovoj reorganizaciji u skladu sa preporukama Internacionalne (International Agency for Research on Cancer - IACR) i Evropske (European Network of Cancer Registries - ENCR) asocijacije registara za rak.

Reorganizacija je obuhvatala:

- decentralizaciju (registri se vode na nivou okruga, a baza podataka za centralnu Srbiju se nalazi u Institutu za javno zdravlje Srbije),
- pored pasivnog i aktivni način prikupljanja podataka,
- nove izvore informacija,
- edukaciju zdravstvenih radnika,
- informatičku podršku i
- povratni sistem informacija.

Zahvaljujući uspešnoj reorganizaciji, u toku 1998. godine Registar za rak u centralnoj Srbiji je primljen u Internacionalnu (IACR) i Evropsku asocijaciju registara za rak (ENCR).

Posle navedenih aktivnosti i vremenskog perioda od nekoliko godina, koji je neophodan za stabilnost podataka, ostvareni su uslovi za izradu prvog izveštaja u decembru 2002. godine.

U registrima koji funkcionišu više decenija, zbog mnogobrojnih izvora podataka i potrebe za njihovom proverom i analizom, uobičajeni vremenski period za prikupljanje podataka iznosi dve godine posle čega se publikuje izveštaj.

## **INTRODUCTION**

The Population Register for Cancer was formed in Serbia in 1970, originated from the Plan of Statistical Research of Interest for the Republic (Official Gazette of the Republic of Serbia No. 32/69).

In 1986, aiming to apply a unified Register implementation methodology in all territorial units of Former Yugoslavia, the Guidelines On Ways And Procedures Of Reporting Persons With Malign Neoplasms (Official Gazette SFRY, No. 3/86) and the Regulation Book For The Register Form And The Method Of Updating, The Report Forms And Reporting And Cancelation Procedures For Certain Diseases (Official Gazette Gazette of the Republic of Serbia No. 42/86) were adopted.

Unprecise Guidelines, insufficient education of the medical personnel, as well as the lack of informatics support resulted in the subregistration of newly found cases of cancer, as well as a relatively poor quality of data on the report forms themselves. In the period of 1986 - 1995, the number of cases with malignant tumors reported to the Register was approximately the same or even lower compared to the number of cases deceased from cancer.

Starting from legal obligations and role of the Register, (foremost for the evaluation of the cancer burden on society, adoption of primary prevention programs, planning oncology health care, as well as clinical and epidemiological research), the reorganization of the Register began in 1996, in accordance with the recommendations of the Interational Agency for Research on Cancer - IACR, and European Network of Cancer Registries - ENCR.

The reorganization encompassed:

- Decentralization (registers are formed on the level of regions, while the main database for Central Serbia is located in the Institute of Public Health of Serbia),
- Apart from passive, active data collection,
- New sources of information,
- Education of medical personnel,
- Informatics support and
- Feedback system of information.

During 1998, due to a successful reorganization, the Cancer Register in Central Serbia was admitted into the Interational Agency for Research on Cancer (IACR) and European Network of Cancer Registries (ENCR).

Following the afore-mentioned activities and several years period necessary for achieving stability of the data, conditions were created for issuing the first Report in December 2002.

In Registers functioning over a period of several decades, due to numerous data sources and the need to check and analyze them, the usual time span for data collection is two years, after which the Report is published.



## **METOD**

Registar za rak u centralnoj Srbiji obuhvata podatke o: ličnim karakteristikama obolelih/umrlih, mogućoj pojavi multiplog primarnog tumora, datumu utvrđivanja sadašnjeg oboljenja, načinu dijagnostike, karakteristikama tumora (primarna i sekundarna anatomska lokalizacija, histološki tip, stadijum), ishodu bolesti, kao i podatke o zdravstvenoj ustanovi koja je prijavila maligni tumor.

Izvori informacija o obolelim/umrlim od raka su podaci iz instituta za onkologiju, onkoloških dispanzera, onkoloških klinika, bolničkih i vanbolničkih zdravstvenih ustanova, patohistoloških/citoloških, hematoloških i drugih laboratorija, prijava smrti, fondova zdravstvenog osiguranja i ciljanih istraživanja.

Informatičku podršku Registru pružio je programski paket CanReg4 (Department of Descriptive Epidemiology, IARC, Lyon, France, 2002).

U cilju obezbeđenja kvalitetnog prikupljanja, unosa, čuvanja, obrade i analize podataka u Registru, primenjena je metodologija međunarodnih asocijacija (IARC i ENCR) registara za rak.

Za analizu umiranja od malignih tumora u centralnoj Srbiji u 2005. godini, korišćeni su nepublikovani podaci Republičkog zavoda za statistiku. Izvor podataka o populaciji bila je procena stanovništva za 2005. godinu Republičkog zavoda za statistiku.

Maligni tumori su šifrirani prema Međunarodnoj klasifikaciji bolesti - deseta revizija, knjiga 1- (šifre C00-C96) i prema Međunarodnoj klasifikaciji onkoloških bolesti - drugo izdanje (šifre 8000/3-9941/3) - International Classification of Diseases for Oncology - Third Edition, World Health Organization, 2000, Geneva. Registrom nisu obuhvaćeni tumori "in situ" (šifre D00-D09).

U izveštaju pored nestandardizovanih, prikazane su i standardizovane stope incidencije (tabele 37-55) i mortaliteta (tabele 75-96). Navedene stope standardizovane su metodom direktne standardizacije, a kao standardna populacija korišćena je populacija sveta (ASR-W), Evrope (ASR-E) i trunkova (ASR-TRUNC).

Učešće prijavljenih slučajeva malignih tumora koji su registrovani samo na osnovu prijave smrti (tabela 17), kao i učešće histološki i citološki verifikovanih malignih tumora (tabela 94) u ukupnom broju prijavljenih malignih tumora, bili su osnov za procenu kvaliteta podataka Registra.

## **METHOD**

The Central Serbia Cancer Register includes the following data: personal characteristics of new cases/deceased, possible appearance of multiple primary tumors, date of determination of current illness, diagnostic methods, tumor characteristics (primary and secondary anatomy localization, histology type, stage), outcome of the disease, as well as data on the health institution reporting the malign tumor.

Information sources concerning new cancer cases/deceased cases are data from the oncology institutes, oncology dispensaries, oncology clinics, hospitals and out-patients health institutions, pathology/cytology, hematology and other laboratories, death reports, health insurance funds and targeted research.

The Register is informatically supported by the CanReg4 program package (Department of Descriptive Epidemiology, IARC, Lyon, France, 2002).

With the aim of providing quality in collection, entry, keeping, processing and analysis of data in the Register, the methodology of international associations was applied (IARC I ENCR) for cancer registers.

Unpublished data of the Republic Statistics Institute were used for the analysis of death due to malign tumors in Central Serbia in 2005.

The source of data concerning the population was the 2005 estimate of the Republic Statistics Institute.

Malign tumors are coded according to the International Classification of Diseases - Tenth Revision, Volume 1 (codes C00-C96) and according to the International Classification of Diseases for Oncology - Third Edition (codes 8000/3-9941/3), World Health Organization, 2000, Geneva. The Register does not include tumors "in situ" (codes D00-D09).

Apart from crude rates, the Report includes standardized incidence rates (tables 37-55) and mortality rates (tables 75-96). These rates were standardized by the method of direct standardization, with the World (ASR-W), European (ASR-E) or truncated (ASR-TRUNC) population as the standard population.

The percentage of new malign tumor cases registered only on the basis of death reports (table 17), as well as the percentage of histologically and cytologically verified malign tumors (table 94) out of the total number of reported cancer cases, were the foundation for the evaluation of Register data quality.

## **DEFINICIJE**

Incidencija je broj novodijagnostikovanih slučajeva raka u definisanoj populaciji, prijavljenih registru u datoj kalendarskoj godini.

Uzrasno specifična stopa incidencije je broj novoobolelih od raka u definisanoj uzrasnoj grupi (najčešće petogodišnji interval) na 100.000 stanovnika te uzrasne grupe.

Mortalitet je broj slučajeva umrlih od raka koji se javljaju u definisanoj populaciji tokom određenog vremenskog perioda.

Uzrasno specifična stopa mortaliteta je broj umrlih od raka u definisanoj uzrasnoj grupi (najčešće petogodišnji interval) na 100.000 stanovnika te uzrasne grupe.

Standardizovane stope incidencije i mortaliteta predstavljaju fiktivne vrednosti koje se dobijaju određenim tehničkim postupkom, uvođenjem standardne populacije, obično je to: populacija sveta (ASR-W), Evrope (ASR-E) ili tranaka (ASR-TRUNC). Njima se prevazilaze razlike (najčešće po polu i uzrastu) koje postoje u različitim populacijama, tako da su pogodne za poređenja.

## **DEFINITIONS**

Incidence is the number of newly diagnosed cancer cases in a defined population, reported to the Register in the given calendar year.

The age-specific incidence rate is the number of new cancer cases in a defined age-group (usually five-year interval) per 100 000 population of that age group.

Mortality is the number of cases deceased from cancer appearing in a defined population during a determined period of time.

The age-specific mortality rate is the number of deceased from cancer in a defined age-group (usually five-year interval) per 100 000 population of that age group.

Standardized incidence and mortality rates represent fictive values reached by a certain technique, introducing standard population: usually World (ASR-W), European (ASR-E) or truncated population (ASR-TRUNC). They are used to eliminate differences (mostly gender and age) existing in different populations and are, therefore, convenient for comparison.

***U realizaciji ovog izveštaja učestvovali su zdravstveni radnici i saradnici:***

- *Instituta za javno zdravlje u Nišu i Kragujevcu;*
- *Zavoda za javno zdravlje na teritoriji centralne Srbije;*
- *Hospitalnog Registra za rak Instituta za onkologiju i radiologiju Srbije;*
- *Instituta kliničkog centra Srbije i kliničkog centra u Nišu;*
- *Kliničko bolničkih centara u Beogradu i Kragujevcu;*
- *Instituta za zdravstvenu zaštitu majke i deteta "Dr Vukan Čupić";*
- *Univerzitetske dečije klinike u Beogradu;*
- *Ginekološko akušerske klinike "Narodni front";*
- *Zdravstvenih centara;*
- *Specijalnih / opštih bolnica, i*
- *Domova zdravlja na teritoriji centralne Srbije.*

***Health experts and administrative staff from the following institutions participated in the realization of this Report:***

- *Institutes of Public Health of Nis and Kragujevac;*
- *Institutes of Public Health on the territory of Central Serbia;*
- *Hospital Cancer Register of the Oncology and Radiology Institute of Serbia;*
- *Institutes of the Clinical Centre of Serbia and the Clinical Centre of Nis;*
- *Clinical-Hospital Centres in Belgrade and Kragujevac;*
- *Institute for Health Care of Mother and Child "Dr Vukan Čupić";*
- *University Childrens' Clinic in Belgrade;*
- *Gyneacology and Obstretics Clinic "Narodni front";*
- *Health Centres;*
- *Special / General Hospitals and*
- *Primary Health Centres on the territory of Central Serbia.*

## **Koordinatori okružnih Registara za rak / *Coordinators of Cancer Registries:***

### **Zavod za javno zdravlje Šabac / *Institute of Public Health Sabac***

Dr Olivera Stojanović, specijalista socijalne medicine / *Olivera Stojanovic, MD, specialist specialist in social medicine*

Vesna Maksimović, viši sanitarni tehničar / *Vesna Maksimovic, senior sanitary technician*

### **Zavod za javno zdravlje Valjevo / *Institute of Public Health Valjevo***

Marija Jovanović, medicinska sestra / *Marija Jovanovic, nurse*

### **Zavod za javno zdravlje Požarevac / *Institute of Public Health Pozarevac***

Dr Goran Nikolić, specijalista epidemiologije / *Goran Nikolic, MD, specialist in epidemiology*

Srdan Klimek, viši sanitarni tehničar / *Srdjan Klimek, senior sanitary technician*

Nataša Peurača, dipl. biolog / *Natasa Peuraca, graduate biologist*

### **Institut za javno zdravlje Kragujevac / *Institute of Public Health Kragujevac***

Prof. dr Vesna Pantović, specijalista epidemiologije / *Prof. Vesna Pantovic, MD, PhD, specialist in epidemiology*

Ass. dr Gordana Đorđević, specijalista epidemiologije / *Ass. Prof. Gordana Djordjevic, MD, PhD, specialist in epidemiology*

Jelena Hadžić - Radisavljević, viši sanitarni tehničar / *Jelena Hadzic - Radisavljevic, senior sanitary technician*

### **Zavod za javno zdravlje Čuprija / *Institute of Public Health Cuprija***

Dr Vesna Stefanović, specijalista epidemiolog / *Vesna Stefanovic, MD, specialist in epidemiology*

Sonja Anđelković, viši sanitarni tehničar / *Sonja Anđelkovic, senior sanitary technician*

### **Zavod za javno zdravlje Zaječar / *Institute of Public Health Zajecar***

Dr Svetlana Živković, specijalista epidemiolog / *Svetlana Zivkovic, MD, specialist in epidemiology*

Nena Đorđević, operater / *Nena Đorđevic, IT technician*

### **Zavod za javno zdravlje Užice / *Institute of Public Health Uzice***

Dr sc med Biljana Mijović / *Biljana Mijovic MD, PhD, specialist in epidemiology*

Dr Aleksandra Andrić, specijalista epidemiolog / *Aleksandra Andric, MD, specialist in epidemiology*

Marija Dulović, sanitarni tehničar / *Marija Dulovic, sanitary technician*

### **Zavod za javno zdravlje Čačak / *Institute of Public Health Cacak***

Dr Aksentije Tošić, specijalista epidemiolog / *Aksentije Tosic, MD, specialist in epidemiology*

Radoica Gojgić, dipl. inženjer metalurgije / *Radoica Gojgic, dipl. engineer of metallurgy*

### **Zavod za javno zdravlje Kraljevo / *Institute of Public Health Kraljevo***

Dr Vladan Šaponjić, specijalista epidemiolog / *Vladan Saponjic, MD, specialist in epidemiology*

Dr Verica Đukić, specijalista epidemiolog / *Verica Djukic, MD, specialist in epidemiology*

Zvonko Marinković, viši sanitarni tehničar / *Zvonko Marinkovic, senior sanitary technician*

### **Zavod za javno zdravlje Kruševac / *Institute of Public Health Krusevac***

Dr Mirjana Avramović, specijalista epidemiolog / *Mirjana Avramovic, MD, specialist in epidemiology*

Verica Mijailović, viši sanitarni tehničar / *Verica Mijailovic, senior sanitary technician*

**Institut za javno zdravlje Niš / *Institute of Public Health Nis***

Dr Mirko Ilić, specijalista epidemiolog / *Mirko Ilic, MD, specialist in epidemiology*

Aleksandar Stojanović, viši sanitarni tehničar / *Aleksandar Stojanovic, senior sanitary technician*

**Zavod za javno zdravlje Pirot / *Institute of Public Health Pirot***

Dr Radmila Zec, specijalista epidemiolog / *Radmila Zec, MD, specialist in epidemiology*

Sonja Petrov, viši sanitarni tehničar / *Sonja Petrov, senior sanitary technician*

**Zavod za javno zdravlje Leskovac / *Institute of Public Health Leskovac***

Prim. dr sc. med. Miroslava Dimitrijević, specijalista socijalne medicine / *Prim. Miroslava Dimitrijevic, MD, PhD, specialist in social medicine*

Rosica Pejčić, viši sanitarni tehničar / *Rosica Pejcic, senior sanitary technician*

**Zavod za javno zdravlje Vranje / *Institute of Public Health Vranje***

Dr Svetlana Stojanović, specijalista socijalne medicine / *Svetlana Stojadinovic, MD, specialist in social medicine*

Petar Veličković, zdravstveni statističar / *Petar Velickovic, health statistician*

**Gradski zavod za javno zdravlje Beograd / *Institute of Public Health Beograd***

Mr sc. med. Ljubinka Marčetić, specijalista socijalne medicine / *Ljubinka Marcetic, MD, M. Sc. specialist in social medicine*

Dr Svetlana Trtica, specijalista socijalne medicine / *Svetlana Trtica, MD, specialist in social medicine*

Aleksandra Čukić, zdravstveni statističar / *Aleksandra Cukic, health statistician*

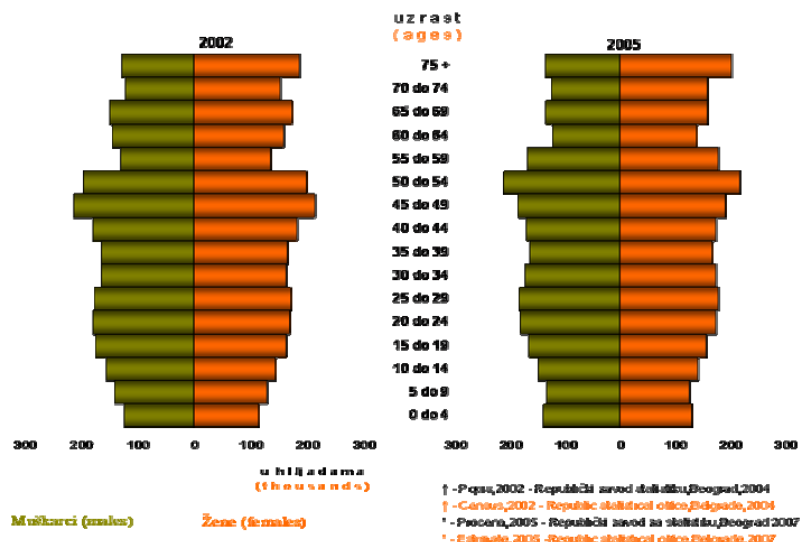
**Tabela 1. Broj stanovnika prema uzrastu i polu, centralna Srbija, 2005\*. godina**  
**Table 1. Population of Central Serbia by age and sex, 2005\***

Uzrast Age	Muškarci Males	Žene Females	Ukupno Total
0-4	144415	136517	280932
5-9	137760	131217	268977
10-14	155494	147827	303321
15-19	171640	163469	335109
20-24	187650	181498	369148
25-29	189951	186329	376280
30-34	180290	181211	361501
35-39	170670	174923	345593
40-44	176611	182445	359056
45-49	192965	199430	392395
50-54	220359	226573	446932
55-59	174290	187322	361612
60-64	128163	144657	272820
65-69	140662	166737	307399
70-74	129927	164793	294720
75+	139968	212088	352056
<b>Ukupno (Total)</b>	<b>2640815</b>	<b>2787036</b>	<b>5427851</b>

**Tabela 2. Broj stanovnika prema okruzima i polu, centralna Srbija, 2005\*. godina**  
**Table 2. Population of Central Serbia by administrative districts by sex, 2005\***

Teritorija District	Muškarci Males	Žene Females	Ukupno Total
Grad Beograd	755851	841068	1596919
Kolubarski	92417	95212	187629
Mačvanski	159625	163078	322703
Raški	145431	150144	295575
Moravički	108732	112791	221523
Zlatiborski	152070	155552	307622
Rasinski	124147	129676	253823
Šumadijski	144166	151075	295241
Pomoravski	108105	115286	223391
Braničevski	95088	102106	197194
Podunavski	102418	105879	208297
Zaječarski	63922	67974	131896
Borski	68694	71673	140367
Nišavski	186543	192533	379076
Pčinjski	114815	114892	229707
Jablanički	117816	118246	236062
Toplički	49835	49453	99288
Pirotski	51140	50398	101538
<b>Centralna Srbija (Central Serbia)</b>	<b>2640815</b>	<b>2787036</b>	<b>5427851</b>

**Slika 1. Stanovništvo prema uzrastu i polu, centralna Srbija, 2002† i 2005\*. godina**  
**Figure 1. Population of Central Serbia by age and sex, 2002† and 2005\***



**Tabela 3. Broj novoobolelih osoba od raka prema polu, centralna Srbija, 1990 - 2005. godina**  
**Table 3. Number of new cancer cases by sex, Central Serbia, 1990 - 2005**

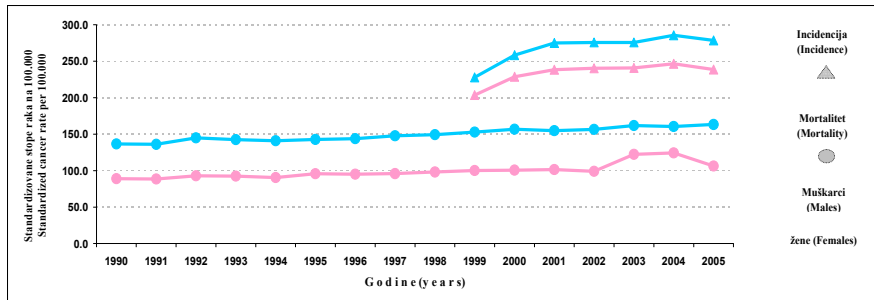
P o l (Sex)	G o d i n e (Y e a r s)															
	1990*	1991*	1992*	1993*	1994*	1995*	1996*	1997*	1998*	1999	2000	2001	2002	2003	2004	2005
Muškarci (Males)	4879	4479	4417	2900	2639	3101	8987	9412	9788	9964	11270	12110	12449	12350	12801	12679
Žene (Females)	5019	4696	4174	3354	3250	3955	8236	8562	9053	9661	10853	11249	11449	11594	11954	11690
<b>Ukupno (Total)</b>	<b>9898</b>	<b>9175</b>	<b>8591</b>	<b>6254</b>	<b>5889</b>	<b>7056</b>	<b>17223</b>	<b>17974</b>	<b>18841</b>	<b>19625</b>	<b>22123</b>	<b>23359</b>	<b>23898</b>	<b>23994</b>	<b>24755</b>	<b>24369</b>

\* subregistracija (subregistration)

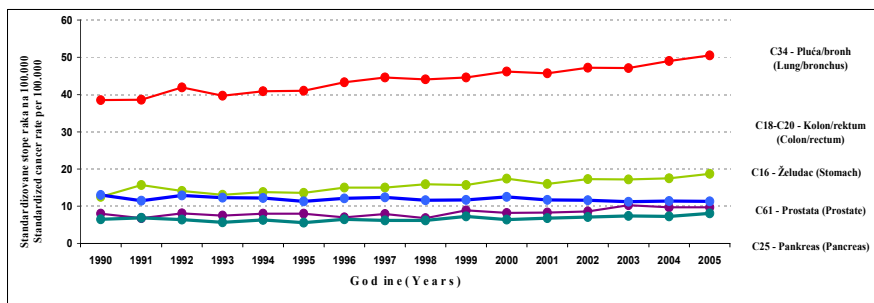
**Tabela 4. Broj umrlih osoba od raka prema polu, centralna Srbija, 1990 - 2005. godina**  
**Table 4. Number of death cancer cases by sex, Central Serbia, 1990 - 2005**

P o l (Sex)	G o d i n e (Y e a r s)															
	1990	1991	1992	1993	1994	1995	1996	1997	1998	1999	2000	2001	2002	2003	2004	2005
Muškarci (Males)	5612	5658	6083	6093	6146	6287	6488	6736	6874	6962	7206	7149	7496	7655	7728	7858
Žene (Females)	4202	4303	4544	4581	4569	4907	4919	5052	5288	5350	5447	5553	5571	5832	5980	6142
<b>Ukupno (Total)</b>	<b>9814</b>	<b>9961</b>	<b>10627</b>	<b>10684</b>	<b>10715</b>	<b>11194</b>	<b>11407</b>	<b>11788</b>	<b>12162</b>	<b>12312</b>	<b>12653</b>	<b>12702</b>	<b>13067</b>	<b>13487</b>	<b>13708</b>	<b>14000</b>

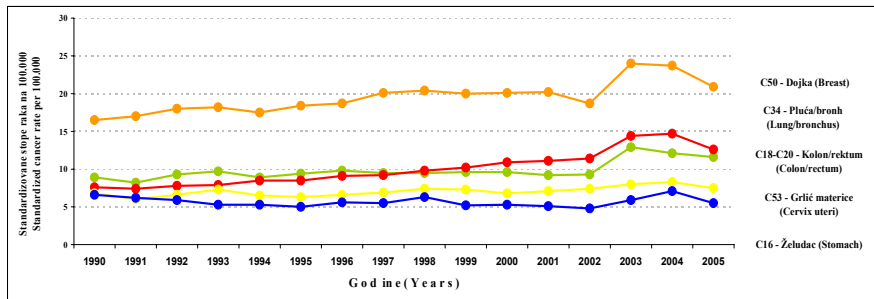
**Slika 2. Standardizovana incidencija i mortalitet od raka na 100.000 stanovnika, centralna Srbija, 1990 - 2005. godina**  
**Figure 2. Standardized cancer incidence and mortality rates per 100.000 population, Central Serbia, 1990 - 2005**



**Slika 3. Standardizovane stope mortaliteta od vodećih lokalizacija raka na 100.000 stanovnika, muškarci, centralna Srbija, 1990-2005. god.**  
**Figure 3. Standardized cancer mortality rates per 100.000 population, males, Central Serbia, 1990 - 2005**

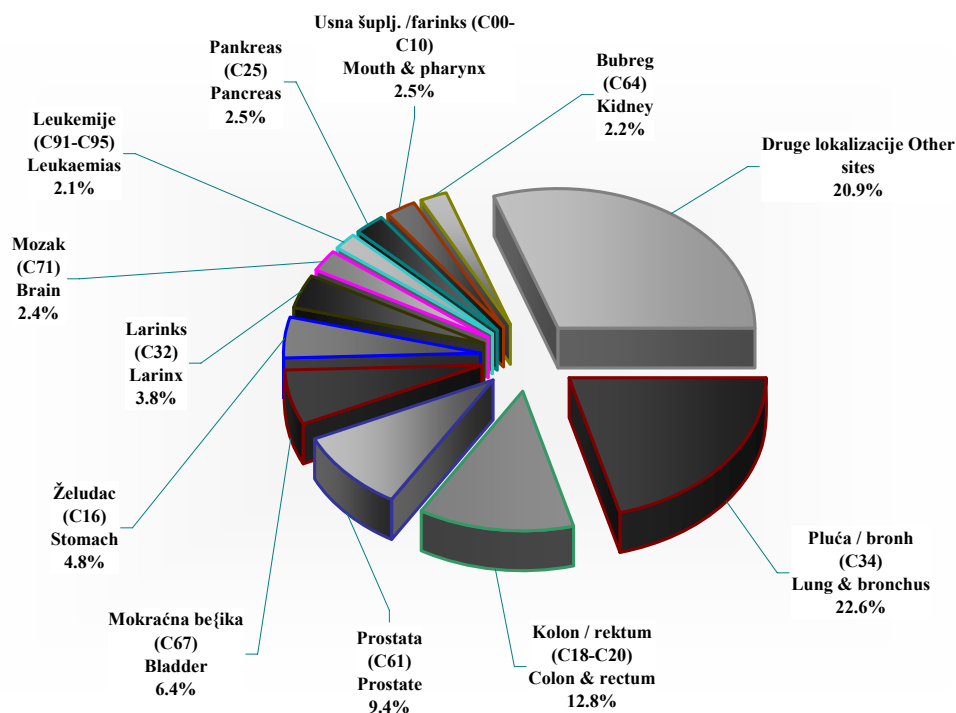


**Slika 4. Standardizovane stope mortaliteta od vodećih lokalizacija raka na 100.000 stanovnika, žene, centralna Srbija, 1990 - 2005. god.**  
**Figure 4. Standardized cancer mortality rates per 100.000 population, females, Central Serbia, 1990 - 2005**

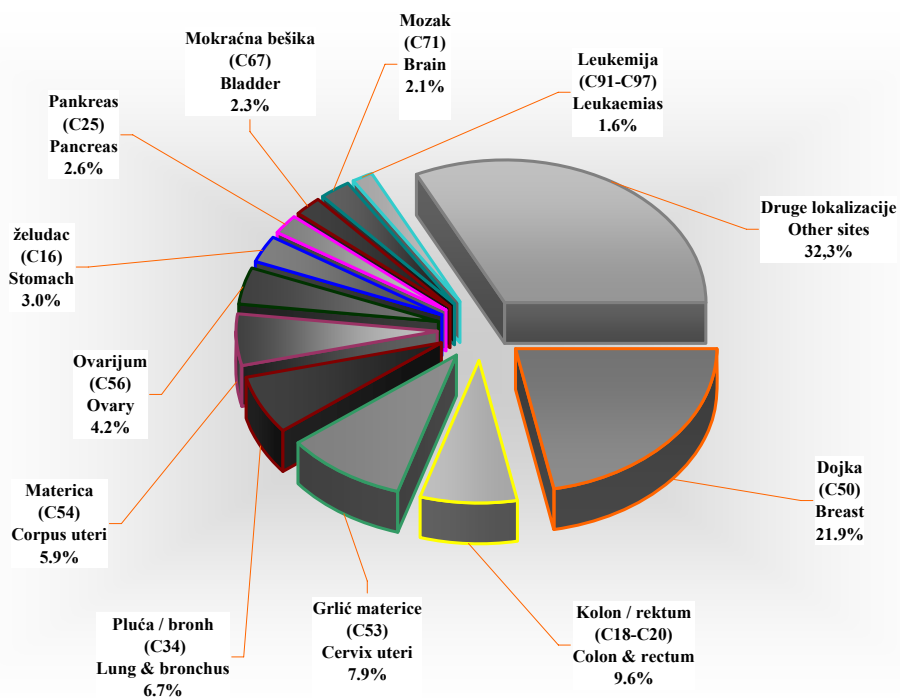




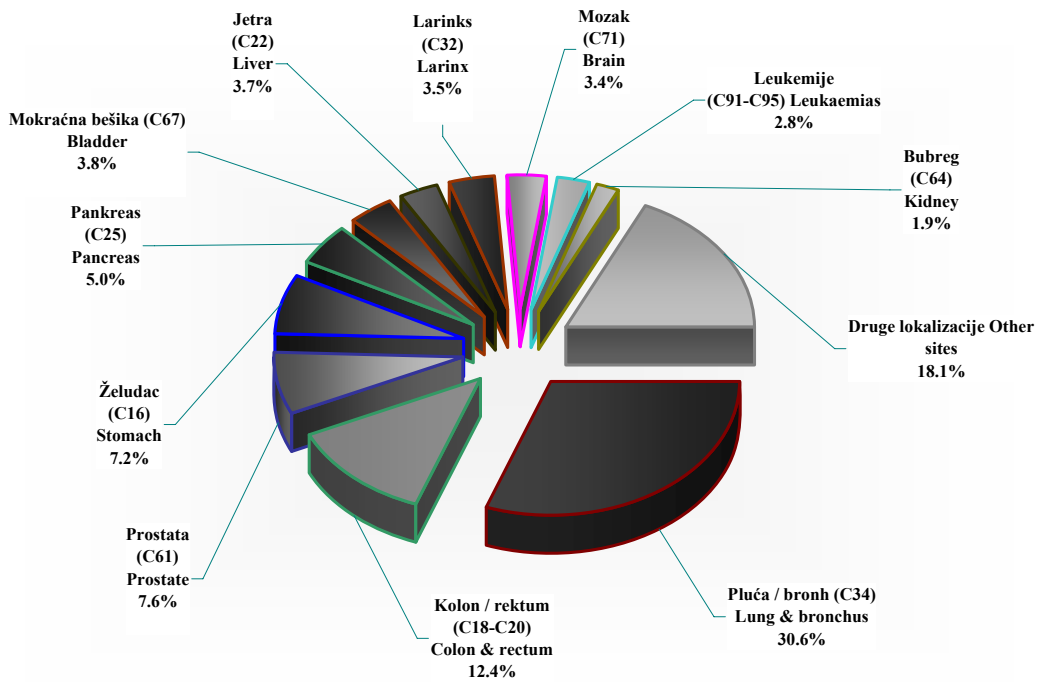
**Slika 5. Vodeće lokalizacije u obolevanju od malignih tumora kod muškaraca, centralna Srbija, 2005. god.**  
**Figure 5. The leading cancer sites in males, Central Serbia, 2005**



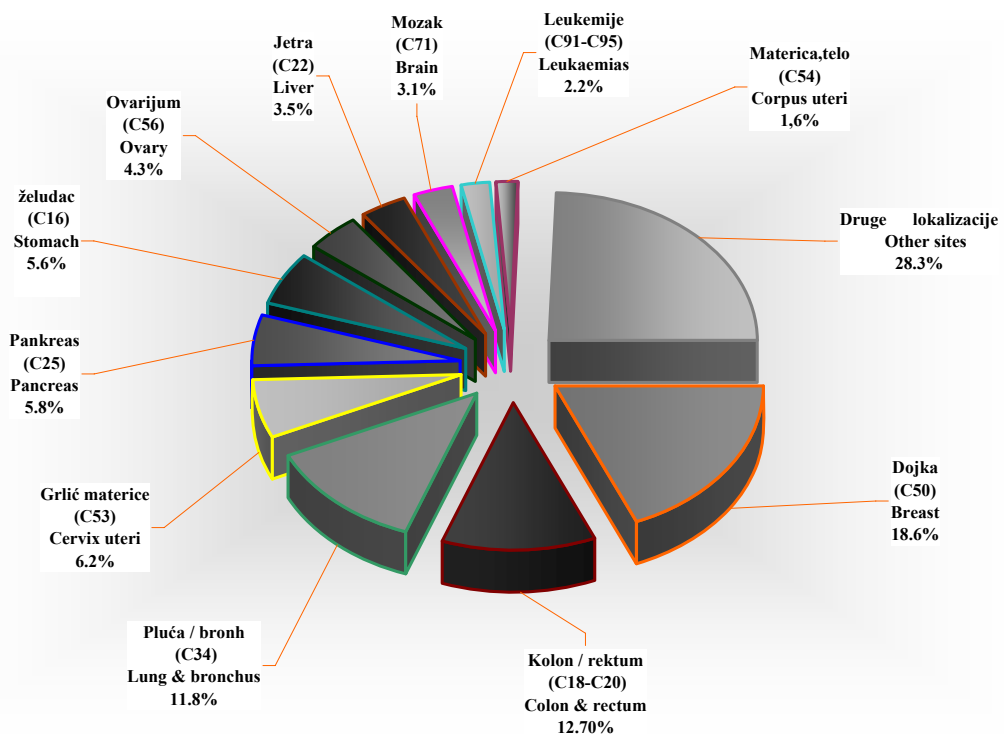
**Slika 6. Vodeće lokalizacije u obolevanju od malignih tumora kod žena, centralna Srbija, 2005. god.**  
**Figure 6. The leading cancer sites in females, Central Serbia, 2005**



**Slika 7. Vodeće lokalizacije u umiranju od malignih tumora kod muškaraca, centralna Srbija, 2005. god.**  
**Figure 7. The leading cancer sites, deaths, males in Central Serbia, 2005**



**Slika 8. Vodeće lokalizacije u umiranju od malignih tumora kod žena, centralna Srbija, 2005. god.**  
**Figure 8. The leading cancer sites, deaths, females in Central Serbia, 2005**



**Tabela 5. Broj novoobolelih slučajeva od raka prema vodećim lokalizacijama i okruzima, muškarci, centralna Srbija, 2005. godina**

**Table 5. Number of new cancer cases by leading primary sites, males, regions in Central Serbia, 2005**

Primarne lokalizacije (10-MKB) Primary sites (ICD-10)	centralna Srbija	O k r u g ( R e g i o n )																	
		Grad Beograd	Kolubarski	Mačvanski	Raški	Moravički	Zlatiborski	Rasinski	Šumadijski	Pomoravski	Braničevski	Podunavski	Zajčarski	Borski	Nišavski	Pčinjski	Jablanički	Toplički	Pirotski
Pluća i bronh, (C34) Lung and bronchus	2677	887	119	150	98	125	119	179	163	61	93	130	43	61	196	86	79	41	47
Kolon i rektum (C18-C20) Colon and rectum	1635	652	69	95	62	57	60	64	121	45	44	56	30	32	142	40	28	11	27
Prostata (C61) Prostate	1197	471	40	63	47	35	22	48	58	23	53	72	33	40	67	30	43	16	36
Mokraćna bešika (C67) Bladder	821	244	40	50	49	44	26	38	44	22	28	36	22	28	72	24	26	12	16
Želudac (C16) Stomach	609	165	34	29	15	34	30	38	41	18	24	21	10	14	59	26	23	17	11
Larinks (C32) Larynx	489	137	20	34	34	28	24	13	37	18	9	24	8	6	43	17	11	19	7
Pankreas (C25) Pancreas	325	120	6	14	15	8	26	17	11	12	7	18	17	4	27	5	8	2	8
Usna šuplj. i farinks (C00-C10) Mouth and pharynx	325	88	8	19	18	16	17	15	23	18	2	14	5	10	32	9	17	8	6
Mozak (C71) Brain	311	64	15	20	19	15	12	15	29	11	25	13	5	9	25	10	11	4	9
Leukemije (C91-C95) Leukaemias	265	100	9	20	15	14	10	6	21	10	1	5	6	1	17	3	14	5	8
Bubreg (C64) Kidney	280	103	9	21	16	16	11	7	16	6	3	8	8	5	23	6	11	3	8
Jetra (C22) Liver	260	84	8	29	12	12	7	1	11	6	9	16	2	3	33	10	4	7	6
Druge lokalizacije Other sites	3485	1024	137	190	161	141	243	178	287	70	85	124	79	78	302	146	92	48	100
Sve lokalizacije (C00-C97) All sites	12679	4139	514	734	561	545	607	619	862	320	383	537	268	291	1038	412	367	193	289
Sve lokalizacije bez kože (C44) All sites but skin (C44)	11309	3756	445	642	493	474	500	532	749	309	364	501	235	260	904	374	342	181	248

**Tabela 6. Broj novoobolelih slučajeva od raka prema vodećim lokalizacijama i okruzima, žene, centralna Srbija, 2005. godina**

**Table 6. Number of new cancer cases by leading primary sites, females, regions in Central Serbia, 2005**

Primarne lokalizacije (10-MKB) Primary sites (ICD-10)	centralna Srbija	O k r u g ( R e g i o n )																	
		Grad Beograd	Kolubarski	Mačvanski	Raški	Moravički	Zlatiborski	Rasinski	Šumadijski	Pomoravski	Braničevski	Podunavski	Zajčarski	Borski	Nišavski	Pčinjski	Jablanički	Toplički	Pirotski
Dojka (C50) Breast	2617	947	90	108	135	125	106	137	159	67	63	91	50	58	221	71	64	44	81
Kolon i rektum (C18-C20) Colon and rectum	1145	441	55	55	43	34	39	63	59	54	28	34	28	19	89	30	28	20	26
Grlić materice (C53) Cervix uteri	948	281	35	47	34	43	36	40	73	27	62	38	25	41	66	26	36	19	19
Pluća i bronh (C34) Lung and bronchus	797	324	24	40	39	33	28	48	51	33	28	25	10	16	47	20	18	9	4
Materica (C54) Corpus uteri	702	244	24	26	29	24	19	41	49	18	17	21	19	10	72	23	34	12	20
Ovarijum (C56) Ovary	500	175	17	13	24	26	22	28	38	17	12	17	7	10	49	9	14	11	11
Želudac (C16) Stomach	359	92	11	28	12	16	25	46	20	12	11	11	9	5	27	13	7	10	4
Pankreas (C25) Pancreas	309	111	9	11	21	4	11	15	26	11	5	8	10	8	26	10	3	8	12
Mokraćna bešika (C67) Bladder	270	105	4	11	11	13	15	15	17	8	15	11	5	9	13	7	5	4	2
Mozak (C71) Brain	256	55	13	15	13	13	14	13	26	4	15	9	5	12	29	5	7	5	3
Leukemije (C91-C95) Leukaemias	191	71	11	15	13	8	5	3	16	5	0	4	1	2	14	1	9	6	7
Jetra (C22) Liver	168	47	7	13	10	5	8	1	8	3	7	12	3	3	18	4	6	5	8
Druge lokalizacije Other sites	3428	970	160	204	163	140	228	153	285	93	96	107	112	77	277	133	83	52	95
Sve lokalizacije (C00-C97) All sites	11690	3863	460	586	547	484	556	603	827	352	359	388	284	270	948	352	314	205	292
Sve lokalizacije bez kože (C44) All sites but skin (C44)	10421	3531	395	504	494	416	461	533	705	347	329	356	231	236	831	308	299	196	249

Tabela 7. Stope incidencije od raka na 100.000 stanovnika prema vodećim lokalizacijama i okruzima, muškarci, centralna Srbija, 2005. godina

Table 7. Cancer incidence rates per 100.000 population by leading primary sites, males, regions in Central Serbia, 2005

Primarne lokalizacije (10-MKB) Primary sites (ICD-10)	O k r u g ( R e g i o n )																		
	centralna Srbija	Grad Beograd	Kolubarski	Mačvanski	Raški	Moravički	Zlatiborski	Rasinski	Šumadijski	Pomoravski	Branicevski	Podunavski	Zajčevski	Borski	Nišavski	Pčinjski	Jablanički	Toplički	Pirotski
Pluća i bronh, (C34) Lung and bronchus	101.4	117.4	128.8	94.0	67.4	115.0	78.3	144.2	113.1	56.4	97.8	126.9	67.3	88.8	105.1	74.9	67.1	82.3	91.9
Kolon i rektum (C18-C20) Colon and rectum	61.9	86.3	74.7	59.5	42.6	52.4	39.5	51.6	83.9	41.6	46.3	54.7	46.9	46.6	76.1	34.8	23.8	22.1	52.8
Prostata (C61) Prostate	45.3	62.3	43.3	39.5	32.3	32.2	14.5	38.7	40.2	21.3	55.7	70.3	51.8	58.2	35.9	26.1	36.5	32.1	70.4
Mokraćna bešika (C67) Bladder	31.1	32.3	43.3	31.3	33.7	40.5	17.1	30.6	30.5	20.4	29.4	35.2	34.4	40.8	38.6	20.9	22.1	24.1	31.3
Želudac (C16) Stomach	23.1	21.8	36.8	18.2	10.3	31.3	19.7	30.6	28.4	16.7	25.2	20.5	15.6	20.4	31.6	22.6	19.5	34.1	21.5
Larinks (C32) Larynx	18.5	18.1	21.6	21.3	23.4	25.8	15.8	10.5	25.7	16.7	9.5	23.4	12.5	8.7	23.1	14.8	9.3	38.1	13.7
Mozak (C71) Brain	11.8	8.5	16.2	12.5	13.1	13.8	7.9	12.1	20.1	10.2	26.3	12.7	7.8	13.1	13.4	8.7	9.3	8.0	17.6
Leukemije (C91-C95) Leukaemias	10.0	13.2	9.7	12.5	10.3	12.9	6.6	4.8	14.6	9.3	1.1	4.9	9.4	1.5	9.1	2.6	11.9	10.0	15.6
Pankreas (C25) Pancreas	12.3	15.9	6.5	8.8	10.3	7.4	17.1	13.7	7.6	11.1	7.4	17.6	26.6	5.8	14.5	4.4	6.8	4.0	15.6
Usna šuplj. i farinks (C00-C10) Mouth and pharynx	12.3	11.6	8.7	11.9	12.4	14.7	11.2	12.1	16.0	16.7	2.2	13.7	7.8	14.6	17.2	7.8	14.4	16.1	11.7
Jetra (C22) Liver	9.8	11.1	8.7	18.2	8.3	11.0	4.6	0.8	7.6	5.6	9.5	15.6	3.1	4.4	17.7	8.7	3.4	14.0	11.7
Bubreg (C64) Kidney	10.6	13.6	9.7	13.2	11.0	14.7	7.2	5.6	11.1	5.6	3.2	7.8	12.5	7.3	12.3	5.2	9.3	6.0	15.6
Druge lokalizacije Other sites	132.0	135.5	148.2	118.9	110.6	129.5	159.7	143.3	199.1	64.4	89.2	121.0	123.6	113.4	161.8	127.3	78.1	96.4	195.7
Sve lokalizacije (C00-C97) All sites	480.1	547.6	556.2	459.8	385.7	501.2	399.2	498.6	597.9	296.0	402.8	524.3	419.3	423.6	556.4	358.8	311.5	387.3	565.1
Sve lokalizacije bez kože (C44) All sites but skin (C44)	428.2	496.9	481.5	402.2	339.0	435.9	328.8	428.5	519.5	285.8	382.8	366.5	367.6	378.5	484.6	325.7	290.3	363.2	484.9

Tabela 8. Stope incidencije od raka na 100.000 stanovnika prema vodećim lokalizacijama i okruzima, žene, centralna Srbija, 2005. godina

Table 8. Cancer incidence rates per 100.000 population by leading primary sites, females, regions in Central Serbia, 2005

Primarne lokalizacije (10-MKB) Primary sites (ICD-10)	O k r u g ( R e g i o n )																		
	centralna Srbija	Grad Beograd	Kolubarski	Mačvanski	Raški	Moravički	Zlatiborski	Rasinski	Šumadijski	Pomoravski	Branicevski	Podunavski	Zajčevski	Borski	Nišavski	Pčinjski	Jablanički	Toplički	Pirotski
Dojka (C50) Breast	93.9	112.6	94.5	66.2	89.9	110.8	68.1	105.6	105.0	58.1	61.7	85.9	73.6	80.9	114.8	61.8	54.1	89.0	160.7
Kolon i rektum (C18-C20) Colon and rectum	41.1	52.4	57.8	33.7	28.6	30.1	25.1	48.6	39.1	46.8	27.4	32.1	41.2	26.5	46.2	34.0	38.1	40.4	51.6
Grlić materice (C53) Cervix uteri	34.0	33.4	36.8	28.8	22.6	38.1	23.1	30.8	48.3	23.4	60.7	35.9	36.8	57.2	34.3	22.6	30.4	38.4	37.7
Pluća i bronh (C34) Lung and bronchus	28.6	38.5	25.2	24.5	26.0	29.3	18.0	37.0	33.8	28.6	27.4	23.6	14.7	22.3	24.4	17.4	15.2	18.2	7.9
Materica (C54) Corpus uteri	25.2	29.0	25.2	15.9	19.3	21.3	12.2	31.6	32.4	15.6	16.6	19.8	28.0	14.0	37.4	20.0	28.8	24.3	39.7
Ovarijum (C56) Ovary	17.9	20.8	17.9	8.0	16.0	23.1	14.1	21.6	25.2	14.7	11.8	16.1	10.3	14.0	25.5	7.8	11.8	22.2	21.8
Želudac (C16) Stomach	12.9	10.9	11.6	17.2	8.0	14.2	16.1	35.5	13.2	10.4	10.8	10.4	13.2	7.0	14.0	11.3	5.9	20.2	7.9
Mokraćna bešika (C67) Bladder	9.7	12.5	4.2	6.7	7.3	11.5	9.6	11.6	11.3	6.9	14.7	10.4	7.4	12.6	6.8	6.1	4.2	8.1	4.0
Mozak (C71) Brain	9.2	6.5	13.7	9.2	8.7	11.5	9.0	10.0	17.2	3.5	14.7	8.5	7.4	16.7	15.1	4.4	5.9	10.1	6.0
Pankreas (C25) Pancreas	11.1	13.2	9.5	6.7	14.0	3.5	7.1	11.6	17.2	9.5	4.9	7.6	14.7	11.2	13.5	8.7	2.5	16.2	23.8
Jetra (C22) Liver	6.0	5.6	7.4	8.0	6.7	4.4	5.1	0.8	5.3	2.6	6.9	11.3	4.4	4.2	9.3	3.5	5.1	10.1	15.9
Leukemije (C91-C95) Leukaemias	6.9	8.4	11.6	9.2	8.7	7.1	3.2	2.3	10.6	4.3	0.0	3.8	1.5	2.8	7.3	0.9	7.6	12.1	13.9
Druge lokalizacije Other sites	122.9	115.5	167.7	125.2	108.5	124.2	146.7	118.0	188.8	80.9	94.0	101.1	164.6	107.3	143.8	107.9	55.9	105.2	188.5
Sve lokalizacije (C00-C97) All sites	419.4	459.3	483.1	359.3	364.3	429.1	357.4	465.0	547.4	305.3	351.6	366.5	417.8	376.7	492.4	306.4	265.5	414.5	579.4
Sve lokalizacije bez kože (C44) All sites but skin (C44)	373.9	419.8	414.9	309.1	329.0	368.8	296.4	411.0	466.7	301.0	322.2	336.2	339.8	329.3	431.6	268.1	252.9	396.3	494.1

Tabela 9. Standardizovane stope incidencije od raka na 100.000 stanovnika prema vodećim lokalizacijama i okruzima, muškarci, centralna Srbija, 2005. godina

Table 9. Standardized cancer incidence rates per 100.000 population by leading primary sites, males, regions in Central Serbia, 2005

Primarne lokalizacije (10-MKB) Primary sites (ICD-10)	O k r u g ( R e g i o n )																		
	centralna Srbija	Grad Beograd	Kolubarski	Mačvanski	Raški	Moravički	Zlatiborski	Rasinski	Šumadijski	Pomoravski	Braničevski	Podunavski	Zajčevski	Borski	Nišavski	Pčinjski	Jablanički	Toplički	Pirotski
Pluća i bronh, (C34) Lung and bronchus	58.9	69.7	68.6	56.6	43.7	60.3	48.1	78.0	67.6	29.7	57.6	74.5	34.5	49.5	54.9	55.3	40.1	51.9	49.0
Kolon i rektum (C18-C20) Colon and rectum	34.4	48.8	42.7	34.5	27.5	28.5	23.2	25.6	48.0	19.5	22.4	30.9	22.9	22.7	40.4	24.3	12.9	11.4	31.0
Prostata (C61) Prostate	22.2	32.7	18.1	19.8	17.6	13.9	7.4	17.3	20.4	8.9	23.9	37.1	21.6	26.3	16.3	16.6	18.8	14.2	25.7
Mokraćna bešika (C67) Bladder	17.3	18.5	20.7	17.0	21.6	20.1	9.6	17.4	16.7	12.3	13.9	19.9	15.0	23.0	21.2	14.2	12.5	14.9	15.0
Želudac (C16) Stomach	12.7	12.8	17.0	10.0	6.4	15.9	11.8	16.1	15.9	10.0	12.2	11.7	7.0	10.6	17.1	15.4	9.6	18.9	10.0
Larinks (C32) Larynx	11.4	11.2	12.8	14.0	16.8	14.0	9.8	5.5	14.7	9.4	5.5	14.8	7.0	4.2	13.5	12.0	5.4	23.8	13.1
Mozak (C71) Brain	8.0	5.8	8.0	10.8	11.1	7.5	6.1	7.3	13.0	7.2	16.1	9.5	6.0	10.2	7.3	6.6	6.4	5.0	9.9
Leukemije (C91-C95) Leukaemias	6.7	9.1	4.9	7.9	7.0	10.1	6.9	2.0	9.9	8.1	0.3	3.0	4.9	0.8	4.3	2.3	9.0	5.0	7.9
Pankreas (C25) Pancreas	7.0	9.4	4.2	5.4	7.3	3.9	10.3	7.4	4.4	6.7	3.6	10.3	13.3	3.8	6.6	2.8	4.3	1.9	6.1
Usna šuplj. i farinks (C00-C10) Mouth and pharynx	7.3	7.3	5.4	7.5	8.1	8.3	6.1	6.2	9.6	10.3	0.9	8.6	3.8	8.7	9.3	5.6	9.5	9.2	6.1
Jetra (C22) Liver	5.5	6.4	4.4	10.8	5.6	7.2	2.7	0.5	3.9	2.6	4.1	6.6	1.7	2.8	9.6	6.4	1.9	6.5	6.6
Bubreg (C64) Kidney	6.9	9.1	6.3	8.1	7.8	9.4	4.7	4.5	7.1	4.1	1.8	4.8	6.9	3.8	8.3	4.0	5.2	4.1	8.5
Druge lokalizacije Other sites	80.3	83.5	81.1	72.4	77.8	71.9	98.1	81.2	133.8	40.8	51.0	72.0	69.6	72.6	93.2	98.5	56.2	59.2	103.8
Sve lokalizacije (C00-C97) All sites	278.6	324.3	294.2	274.8	258.3	271.0	244.8	269.0	349.1	169.6	213.3	303.7	214.2	239.0	302.0	264.0	191.8	226.0	292.7
Sve lokalizacije bez kože (C44) All sites but skin (C44)	251.0	296.9	260.2	242.7	228.9	237.2	206.6	233.2	307.2	163.5	204.7	284.6	190.9	216.2	265.2	265.5	240.2	179.5	256.1

Tabela 10. Standardizovane stope incidencije od raka na 100.000 stanovnika prema vodećim lokalizacijama i okruzima, žene, centralna Srbija, 2005. godina

Table 10. Standardized cancer incidence rates per 100.000 population by leading primary sites, females, regions in Central Serbia, 2005

Primarne lokalizacije (10-MKB) Primary sites (ICD-10)	O k r u g ( R e g i o n )																		
	centralna Srbija	Grad Beograd	Kolubarski	Mačvanski	Raški	Moravički	Zlatiborski	Rasinski	Šumadijski	Pomoravski	Braničevski	Podunavski	Zajčevski	Borski	Nišavski	Pčinjski	Jablanički	Toplički	Pirotski
Dojka (C50) Breast	56.1	65.8	53.8	41.7	62.1	64.0	38.9	61.6	64.9	35.5	37.9	50.7	44.1	47.2	67.2	44.7	33.5	56.5	92.0
Kolon i rektum (C18-C20) Colon and rectum	2.2	26.8	25.7	15.2	15.6	17.2	12.4	19.7	18.5	22.0	10.4	16.0	21.4	12.3	20.9	16.4	13.0	18.7	23.9
Grlić materice (C53) Cervix uteri	23.6	21.5	24.1	20.9	17.0	26.2	17.1	19.7	32.1	17.1	46.1	26.5	30.8	39.3	24.7	17.0	21.8	27.0	24.5
Pluća i bronh (C34) Lung and bronchus	15.6	20.9	13.6	14.2	16.7	16.5	9.1	19.0	17.7	14.8	13.1	13.2	8.4	12.6	12.9	11.7	8.6	12.5	4.3
Materica (C54) Corpus uteri	13.8	15.9	11.4	10.1	12.8	9.8	7.2	16.9	18.7	8.7	8.5	9.8	13.8	6.2	20.3	12.7	17.1	10.9	18.5
Ovarijum (C56) Ovary	11.5	13.5	11.4	5.1	10.7	14.8	10.3	12.9	14.6	10.1	4.7	10.1	5.8	9.1	16.5	5.5	8.4	11.8	15.5
Želudac (C16) Stomach	6.5	5.5	7.0	9.0	4.2	7.1	8.0	17.3	6.8	4.5	4.5	5.9	6.0	2.6	7.5	8.3	3.0	7.5	2.7
Mokraćna bešika (C67) Bladder	4.8	6.3	3.0	3.0	4.4	5.4	5.3	4.8	6.3	2.6	4.9	4.3	3.2	8.0	3.6	3.8	2.1	3.5	1.1
Mozak (C71) Brain	6.1	3.9	7.8	5.9	6.3	6.9	7.5	5.7	10.7	6.1	11.8	4.8	5.7	9.4	8.3	2.9	5.5	7.2	7.4
Pankreas (C25) Pancreas	5.0	6.1	4.4	2.8	7.9	2.1	3.9	4.4	7.5	3.2	1.5	3.6	5.9	4.5	5.6	4.7	1.5	5.8	8.4
Jetra (C22) Liver	2.9	2.7	3.0	3.7	2.8	2.2	3.7	0.2	2.5	1.6	2.4	4.7	2.4	1.5	3.8	2.4	3.4	4.2	6.6
Leukemije (C91-C95) Leukaemias	4.8	5.1	6.3	7.1	6.7	3.2	1.7	2.7	7.7	2.7	0.0	5.2	0.9	1.7	5.0	1.0	6.0	11.8	11.8
Druge lokalizacije Other sites	85.7	65.1	84.8	71.8	65.4	68.2	83.6	62.5	101.0	51.9	42.5	57.6	86.7	64.7	76.6	71.8	40.0	51.2	95.2
Sve lokalizacije (C00-C97) All sites	238.6	259.1	256.3	210.5	232.6	243.6	208.7	247.4	309.0	180.8	188.3	212.4	235.1	219.1	272.9	202.9	163.9	228.6	311.9
Sve lokalizacije bez kože (C44) All sites but skin (C44)	216.7	239.8	227.2	186.1	212.2	214.6	178.5	219.6	269.5	179.0	178.1	196.8	200.2	191.5	245.6	181.2	158.0	221.5	275.6

**Tabela 11. Broj umrlih slučajeva od raka prema vodećim lokalizacijama i okruzima, muškarci, centralna Srbija, 2005. godina**

**Table 11. Number of death cancer cases by leading primary sites, males, regions in Central Serbia, 2005**

Primarne lokalizacije (10-MKB) Primary sites (ICD-10)	centralna Srbija	O k r u g ( R e g i o n )																	
		Grad Beograd	Kolubarski	Mačvanski	Raški	Moravički	Zlatiborski	Rasinski	Šumadijski	Pomoravski	Braničevski	Podunavski	Zajčarski	Borski	Nišavski	Pčinjski	Jablanički	Toplički	Pirotski
Pluća i bronh, (C34) Lung and bronchus	2364	798	90	142	92	105	108	116	103	110	86	119	57	60	155	65	86	30	42
Kolon i rektum (C18-C20) Colon and rectum	957	314	39	58	40	30	42	58	54	39	41	35	36	33	59	22	33	9	15
Želudac (C16) Stomach	559	138	27	38	13	28	44	28	31	23	22	21	18	14	41	35	26	5	7
Prostata (C61) Prostate	589	161	21	35	30	26	25	25	34	28	32	30	19	16	39	13	27	8	20
Pankreas (C25) Pancreas	389	144	5	18	18	14	33	14	14	19	6	17	12	7	34	9	14	1	10
Mokraćna bešika (C67) Bladder	292	98	15	19	15	11	9	22	10	12	6	12	12	4	23	6	14	1	3
Jetra (C22) Liver	287	54	8	30	10	18	11	12	20	21	10	12	10	9	20	8	18	7	9
Larinks (C32) Larynx	271	72	10	25	12	18	15	6	17	14	13	9	7	10	14	6	15	6	2
Mozak (C71) Brain	263	85	11	14	9	16	16	11	13	13	14	11	7	3	11	9	7	7	6
Leukemije(C91-C95) Leukaemias	215	67	8	19	4	11	15	12	11	6	4	10	8	7	14	6	6	3	4
Bubreg(C64) Kidney	147	55	1	13	8	10	2	8	12	1	3	4	5	1	10	4	6	2	2
Jednjak(C15) Oesophagus	144	39	6	15	7	6	10	9	9	4	4	6	2	3	7	5	6	4	2
Druge lokalizacije Other sites	1381	454	46	66	51	75	68	68	81	61	41	60	39	26	113	32	53	23	24
Sve lokalizacije (C00-C97) All sites	7858	2479	287	492	309	368	398	389	409	351	282	346	232	193	540	220	311	106	146
Sve lokalizacije bez kože (C44) All sites but skin (C44)	7799	2465	285	492	306	363	397	389	404	347	281	340	229	192	531	218	308	106	146

**Tabela 12. Broj umrlih slučajeva od raka prema vodećim lokalizacijama i okruzima, žene, centralna Srbija, 2005. godina**

**Table 12. Number of death cancer cases by leading primary sites, females, regions in Central Serbia, 2005**

Primarne lokalizacije (10-MKB) Primary sites (ICD-10)	centralna Srbija	O k r u g ( R e g i o n )																	
		Grad Beograd	Kolubarski	Mačvanski	Raški	Moravički	Zlatiborski	Rasinski	Šumadijski	Pomoravski	Braničevski	Podunavski	Zajčarski	Borski	Nišavski	Pčinjski	Jablanički	Toplički	Pirotski
Dojka (C50) Breast	1115	377	27	61	59	48	39	56	70	55	32	35	40	32	71	39	42	12	20
Pluća i bronh (C34) Lung and bronchus	705	280	21	40	43	39	26	27	32	40	22	25	10	12	40	18	14	7	9
Kolon i rektum (C18-C20) Colon and rectum	759	274	23	51	33	26	31	44	29	44	21	31	16	14	55	22	23	7	15
Grlić materice (C53) Cervix uteri	370	98	8	20	17	18	18	18	31	19	19	21	13	18	20	11	14	3	4
Želudac (C16) Stomach	335	93	13	28	15	14	17	15	15	14	10	6	11	10	26	14	14	12	8
Pankreas (C25) Pancreas	348	128	14	11	23	10	17	20	28	19	5	8	11	12	21	8	2	5	6
Ovarijum (C56) Ovary	256	100	6	4	13	11	15	9	24	8	5	6	7	9	21	5	8	3	2
Jetra (C22) Liver	211	50	9	11	19	7	8	9	11	7	11	8	8	8	20	4	8	4	9
Mozak (C71) Brain	183	57	9	12	10	7	10	4	9	6	5	5	2	6	20	5	11	1	4
Leukemije(C91-C95) Leukaemias	130	39	11	8	6	6	8	7	7	6	3	4	4	2	6	1	5	4	3
Materica, telo(C54) Corpus uteri	98	37	4	2	5	3	1	5	4	2	8	1	3	1	10	2	6	1	3
Mokraćna bešika (C67) Bladder	88	36	0	3	5	5	2	3	6	7	7	5	0	2	2	1	1	1	2
Druge lokalizacije Other sites	1544	499	67	96	77	64	80	68	74	72	62	64	41	33	102	34	48	33	30
Sve lokalizacije (C00-C97) All sites	6142	2068	212	347	325	258	272	285	340	299	210	219	166	159	414	164	196	93	115
Sve lokalizacije bez kože (C44) All sites but skin (C44)	6083	2056	211	345	324	257	266	283	338	294	209	216	161	155	409	160	193	92	114

**Tabela 13. Stope mortaliteta od raka na 100.000 stanovnika prema vodećim lokalizacijama i okruzima, muškarci, centralna Srbija, 2005. godina**

**Table 13. Cancer mortality rates per 100.000 population by leading primary sites, males, regions in Central Serbia, 2005**

Primarne lokalizacije (10-MKB) Primary sites (ICD-10)	O k r u g ( R e g i o n )																		
	centralna Srbija	Grad Beograd	Kolubarski	Mačvanski	Raški	Moravički	Zlatiborski	Rasinski	Šumadijski	Pomoravski	Brañičevski	Podunavski	Zajčarski	Borski	Nišavski	Pčinjski	Jablanički	Toplički	Pirotski
Pluća i bronh, (C34) Lung and bronchus	89.5	105.6	97.4	89.0	63.3	96.6	71.0	93.4	71.4	101.8	90.4	116.2	89.2	87.3	83.1	56.6	73.0	60.2	82.1
Kolon i rektum (C18-C20) Colon and rectum	36.2	41.5	42.2	36.3	27.5	27.6	27.6	46.7	37.5	36.1	43.1	34.2	56.3	48.0	31.6	19.2	28.0	18.1	29.3
Želudac (C16) Stomach	21.2	18.3	29.2	23.8	8.9	25.8	28.9	22.6	21.5	21.3	23.1	20.5	28.2	20.4	22.0	30.5	22.1	10.0	13.7
Prostata (C61) Prostate	22.3	21.3	22.7	21.9	20.6	23.9	16.4	20.1	23.6	25.9	33.7	29.3	29.7	23.3	20.9	11.3	22.9	16.1	39.1
Pankreas (C25) Pancreas	14.7	19.1	5.4	11.3	12.4	12.9	21.7	11.3	9.7	17.6	6.3	16.6	18.8	10.2	18.2	7.8	11.9	2.0	19.6
Mokraćna bešika (C67) Bladder	11.1	13.0	16.2	11.9	10.3	10.1	5.9	17.7	6.9	11.1	6.3	11.7	18.8	5.8	12.3	5.2	11.9	2.0	5.9
Jetra (C22) Liver	10.9	7.1	8.7	18.8	6.9	16.6	7.2	9.7	13.9	19.4	10.5	11.7	15.6	13.1	10.7	7.0	15.3	14.0	17.6
Larinks (C32) Larynx	10.3	9.5	10.8	15.7	8.3	16.6	9.9	4.8	11.8	13.0	13.7	8.8	11.0	14.6	7.5	5.2	12.7	12.0	3.9
Mozak (C71) Brain	10.0	11.2	11.9	8.8	6.2	14.7	10.5	8.9	9.0	12.0	14.7	10.7	11.0	4.4	5.9	7.8	5.9	14.0	11.7
Leukemije(C91-C95) Leukaemias	8.1	8.9	8.7	11.9	2.8	10.1	9.9	9.7	7.6	5.6	4.2	9.8	12.5	10.2	7.5	5.2	5.1	6.0	7.9
Bubreg(C64) Kidney	5.6	7.3	1.1	8.1	5.5	9.2	1.3	6.4	8.3	0.9	3.2	3.9	7.8	1.5	5.4	3.5	5.1	4.0	3.9
Jednjak(C15) Oesophagus	5.5	5.2	6.5	9.4	4.8	5.5	6.6	7.2	6.2	3.7	4.2	5.9	3.1	4.4	3.8	4.4	5.1	8.0	3.9
Druge lokalizacije Other sites	52.3	60.1	49.8	41.3	35.1	69.0	44.7	54.8	56.2	56.4	43.1	58.6	61.0	37.8	60.6	27.9	45.0	46.2	46.9
Sve lokalizacije (C00-C97) All sites	297.6	328.0	310.5	308.2	212.5	338.4	261.7	313.3	283.7	324.7	296.6	337.8	362.9	281.0	289.5	191.6	264.0	212.7	285.5
Sve lokalizacije bez kože (C44) All sites but skin (C44)	295.3	326.1	308.4	308.2	210.4	333.8	261.1	313.3	280.2	321.0	295.5	332.0	358.2	279.5	284.7	189.9	261.4	212.7	285.5

**Tabela 14. Stope mortaliteta od raka na 100.000 stanovnika prema vodećim lokalizacijama i okruzima, žene, centralna Srbija, 2005. godina**

**Table 14. Cancer mortality rates per 100.000 population by leading primary sites, females, regions in Central Serbia, 2005**

Primarne lokalizacije (10-MKB) Primary sites (ICD-10)	O k r u g ( R e g i o n )																		
	centralna Srbija	Grad Beograd	Kolubarski	Mačvanski	Raški	Moravički	Zlatiborski	Rasinski	Šumadijski	Pomoravski	Brañičevski	Podunavski	Zajčarski	Borski	Nišavski	Pčinjski	Jablanički	Toplički	Pirotski
Dojka (C50) Breast	40.0	44.8	28.4	37.4	39.3	42.6	25.1	43.2	46.3	47.7	31.3	33.1	58.8	44.6	36.9	33.9	35.5	24.3	39.7
Pluća i bronh (C34) Lung and bronchus	25.3	33.3	22.1	24.5	28.6	34.6	16.7	20.8	21.2	34.7	21.5	23.6	14.7	16.7	20.8	15.7	11.8	14.2	17.9
Kolon i rektum (C18-C20) Colon and rectum	27.2	32.6	24.2	31.3	22.0	23.1	19.9	33.9	19.2	38.2	20.6	29.3	23.5	19.5	28.6	19.1	19.5	14.2	29.8
Grlić materice (C53) Cervix uteri	13.3	11.7	8.4	12.3	11.3	16.0	11.6	13.9	20.5	16.5	18.6	19.8	19.1	25.1	10.4	9.6	11.8	6.1	7.9
Želudac (C16) Stomach	12.0	11.1	13.7	17.2	10.0	12.4	10.9	11.6	9.9	12.1	9.8	5.7	16.2	14.0	13.5	12.2	11.8	24.3	15.9
Pankreas (C25) Pancreas	12.5	15.2	14.7	6.7	15.3	8.9	10.9	15.4	18.5	16.5	4.9	7.6	16.2	16.7	10.9	7.0	1.7	10.1	11.9
Ovarijum (C56) Ovary	9.2	11.9	6.3	2.5	8.7	9.8	9.6	6.9	15.9	6.9	4.9	5.7	10.3	12.6	10.9	4.4	6.8	6.1	4.0
Jetra (C22) Liver	7.6	5.9	9.5	6.7	12.7	6.2	5.1	6.9	7.3	6.1	10.8	7.6	11.8	11.2	10.4	3.5	6.8	8.1	17.9
Mozak (C71) Brain	6.6	6.8	9.5	7.4	6.7	6.2	6.4	3.1	6.0	5.2	4.9	4.7	2.9	8.4	10.4	4.4	9.3	2.0	7.9
Leukemije(C91-C95) Leukaemias	6.2	4.6	11.6	2.5	4.0	5.3	5.1	5.4	4.6	5.2	2.9	3.8	5.9	2.8	3.1	0.9	4.2	8.1	6.0
Materica, telo(C54) Corpus uteri	3.5	4.4	4.2	1.2	3.3	2.7	0.6	3.9	2.6	1.7	7.8	0.9	4.4	1.4	5.2	1.7	5.1	2.0	6.0
Mokraćna bešika (C67) Bladder	3.2	4.3	0.0	1.8	3.3	4.4	1.3	2.3	4.0	6.1	6.9	4.7	0.0	2.8	1.0	0.9	0.8	2.0	4.0
Druge lokalizacije Other sites	53.9	59.3	70.4	61.3	51.3	56.7	51.4	52.4	49.0	62.5	60.7	60.4	60.3	46.0	53.0	29.6	40.6	66.7	59.5
Sve lokalizacije (C00-C97) All sites	220.4	245.9	222.7	212.8	216.5	228.7	174.9	219.8	225.1	259.4	205.7	206.8	244.2	221.8	215.0	142.7	165.8	188.1	228.2
Sve lokalizacije bez kože (C44) All sites but skin (C44)	218.3	244.5	221.6	211.6	215.8	227.9	171.0	218.2	223.7	255.0	204.7	204.0	236.9	216.3	212.4	139.3	163.2	186.0	226.2

Tabela 15. Standardizovane stope mortaliteta od raka na 100.000 stanovnika prema vodećim lokalizacijama i okruzima, muškarci centralna Srbija, 2005. godina

Table 15. Standardized cancer mortality rates per 100.000 population by leading primary sites, males, regions in Central Serbia, 2005

Primarne lokalizacije (10-MKB) Primary sites (ICD-10)	O k r u g ( R e g i o n )																		
	centralna Srbija	Grad Beograd	Kolubarski	Mačvanski	Raski	Moravički	Zlatiborski	Rasinski	Šumadijski	Pomoravski	Braničevski	Podunavski	Zaječarski	Borski	Nišavski	Pčinjski	Jablanički	Toplički	Pirotski
Pluća i bronh. (C34) Lung and bronchus	50.5	59.3	51.1	52.9	42.8	51.4	42.7	47.9	41.7	51.9	49.9	68.1	40.2	48.0	44.4	42.3	44.6	37.7	41.7
Kolon i rektum (C18-C20) Colon and rectum	18.7	21.9	22.1	20.4	17.1	12.8	15.0	22.8	21.3	17.0	19.5	18.8	21.7	22.6	15.2	12.2	13.8	9.9	14.9
Želudac (C16) Stomach	11.3	10.3	12.6	12.5	5.3	11.8	15.7	10.7	11.6	10.1	12.8	12.1	11.0	11.3	11.4	22.5	11.9	5.0	4.2
Prostata (C61) Prostate	9.7	9.9	9.1	10.6	10.2	9.4	7.3	8.1	10.4	9.2	12.3	13.4	8.1	9.6	9.7	6.3	10.9	6.7	12.4
Pankreas (C25) Pancreas	8.1	10.7	3.2	6.2	8.3	7.1	12.2	6.9	5.1	9.0	2.8	10.1	7.2	5.6	8.9	5.4	6.6	1.2	8.8
Mokraćna bešika (C67) Bladder	5.3	6.4	7.2	5.7	5.5	5.3	3.2	8.3	3.0	4.6	2.6	6.0	7.1	2.6	6.2	3.4	5.9	0.7	3.0
Jetra (C22) Liver	5.8	3.8	3.0	10.7	4.7	9.1	3.9	4.1	8.1	9.7	6.9	5.4	6.4	7.3	5.3	5.0	8.2	6.5	8.0
Larinks (C32) Larynx	5.6	5.3	6.6	8.4	4.8	9.1	5.7	1.8	5.8	6.0	7.7	6.0	5.2	7.3	3.7	4.1	7.5	7.7	2.2
Mozak (C71) Brain	6.6	7.3	7.2	6.1	4.4	8.6	8.8	7.3	6.5	6.8	9.0	7.6	8.2	1.9	3.4	6.4	3.7	8.1	4.9
Leukemije(C91-C95) Leukaemias	5.0	5.6	3.8	7.0	1.7	6.9	6.8	5.6	5.0	3.2	2.2	6.1	8.0	4.0	4.0	3.8	2.9	5.6	7.9
Bubreg(C64) Kidney	3.1	3.9	0.4	4.4	4.3	5.5	0.6	3.0	5.0	0.3	1.5	2.2	5.0	0.5	2.8	2.6	3.0	4.6	2.8
Jednjak(C15) Oesophagus	3.3	3.2	4.0	6.0	3.4	3.3	4.4	4.0	4.0	1.8	2.8	3.2	0.7	2.6	1.7	3.4	3.1	5.0	1.1
Druge lokalizacije Other sites	30.2	35.6	26.9	24.0	22.5	35.7	27.1	31.2	32.9	32.4	23.0	32.0	36.4	25.0	31.1	19.6	25.8	29.2	25.8
Sve lokalizacije (C00-C97) All sites	163.2	183.1	157.1	175.0	135.1	175.9	153.1	161.7	160.5	162.0	152.9	191.0	165.4	148.3	147.7	137.1	147.8	128.0	137.6
Sve lokalizacije bez kože (C44) All sites but skin (C44)	162.2	182.2	155.5	175.0	134.0	173.6	152.6	161.7	158.8	160.1	152.6	188.6	163.0	147.5	145.7	135.9	146.6	128.0	137.6

Tabela 16. Standardizovane stope mortaliteta od raka na 100.000 stanovnika prema vodećim lokalizacijama i okruzima, žene, centralna Srbija, 2005. godina

Table 16. Standardized cancer mortality rates per 100.000 population by leading primary sites, females, regions in Central Serbia, 2005

Primarne lokalizacije (10-MKB) Primary sites (ICD-10)	O k r u g ( R e g i o n )																		
	centralna Srbija	Grad Beograd	Kolubarski	Mačvanski	Raski	Moravički	Zlatiborski	Rasinski	Šumadijski	Pomoravski	Braničevski	Podunavski	Zaječarski	Borski	Nišavski	Pčinjski	Jablanički	Toplički	Pirotski
Dojka (C50) Breast	20.9	23.4	14.8	19.4	22.4	21.2	13.1	22.7	24.8	25.1	15.2	17.3	20.3	24.6	20.8	22.5	19.1	12.8	15.3
Pluća i bronh. (C34) Lung and bronchus	12.6	16.1	10.7	12.5	17.9	18.2	8.8	10.4	10.1	15.8	10.8	13.3	7.3	8.0	8.4	9.7	6.7	10.5	8.1
Kolon i rektum (C18-C20) Colon and rectum	11.6	14.0	10.9	14.1	11.6	10.0	8.6	11.9	8.8	14.3	6.6	13.7	8.3	8.2	12.4	10.3	10.5	6.2	11.5
Grlić materice (C53) Cervix uteri	7.5	6.2	6.3	6.5	7.8	8.1	6.4	8.3	13.3	8.1	10.4	12.7	8.5	13.0	6.6	5.8	6.1	1.8	2.9
Želudac (C16) Stomach	5.5	4.9	5.8	7.7	5.4	5.8	5.5	4.6	5.9	4.5	3.1	3.8	6.9	5.2	6.1	7.8	6.0	9.9	6.8
Pankreas (C25) Pancreas	5.2	6.6	5.3	2.7	8.6	3.7	5.3	6.3	7.1	5.5	2.3	3.5	4.3	7.7	4.1	3.4	0.5	4.5	4.6
Ovarijum (C56) Ovary	4.6	6.0	2.5	2.0	4.3	5.0	4.9	3.1	8.3	4.0	1.6	2.8	4.6	5.6	5.1	3.1	3.2	4.0	2.1
Jetra (C22) Liver	3.4	2.8	4.1	3.3	6.4	2.0	2.7	2.6	2.9	2.5	4.6	3.5	3.9	5.2	5.0	2.0	3.3	3.0	6.8
Mozak (C71) Brain	3.9	3.8	4.9	5.0	4.2	3.5	4.4	1.5	3.2	3.4	3.0	3.0	1.6	4.7	5.2	2.8	7.9	1.3	9.7
Leukemije(C91-C95) Leukaemias	2.6	2.4	5.6	3.7	2.9	2.4	3.2	3.2	2.9	2.3	1.5	1.6	2.6	1.5	1.1	0.7	2.9	3.4	3.7
Materica, telo(C54) Corpus uteri	1.5	1.9	1.7	0.4	2.0	1.5	0.2	1.4	1.2	1.0	3.1	0.2	0.9	0.3	2.0	1.5	3.1	0.5	1.8
Mokraćna bešika (C67) Bladder	1.2	1.8	0.0	0.6	1.9	1.4	0.6	0.5	1.4	2.3	2.4	1.9	0.0	1.0	0.3	0.5	0.2	1.5	1.9
Druge lokalizacije Other sites	25.7	27.3	31.0	29.6	27.8	26.9	24.7	25.9	23.9	24.3	21.9	31.6	20.5	20.2	24.9	15.4	21.7	29.6	25.3
Sve lokalizacije (C00-C97) All sites	106.3	117.2	103.8	107.6	123.1	109.8	88.4	102.4	113.6	113.2	86.5	109.1	89.7	105.3	102.1	85.6	91.2	88.9	100.5
Sve lokalizacije bez kože (C44) All sites but skin (C44)	105.6	116.7	103.5	107.1	122.9	109.5	86.5	102.0	113.0	112.0	86.4	107.7	87.7	103.9	101.4	84.3	90.4	88.4	100.1



Tabela 17. Ukupan broj novoobolelih i broj novoobolelih od raka sa procentom registrovanih samo na osnovu prijave smrti, prema primarnoj lokalizaciji i polu, centralna Srbija, 2005. godina

Table 17. Total number of new cancer cases and number and percentage of cases registered from death certificates only, by primary site and sex, Central Serbia, 2005

MKB-10 (ICD-10) Šifra (Code) Ukupno (All)	Primarna lokalizacija Primary site	POL SEX M (Male) Ž (Female)	Ukupno (All) 12679 11690	Broj registrovanih samo na osnovu prijave smrti Number of cases registered from death certificates only		%
				749	590	
C00	Usna	M	92	1	1	1.1%
	Lip	Ž	43	0	0	0.0%
C01	Jezik, koren	M	35	0	0	0.0%
	Base of tongue	Ž	12	0	0	0.0%
C02	Jezik, drugi delovi	M	33	0	0	0.0%
	Tongue, other & unspecified parts	Ž	7	0	0	0.0%
C03	Desni	M	7	0	0	0.0%
	Gum	Ž	12	0	0	0.0%
C04	Pod usta	M	41	1	1	2.4%
	Floor of mouth	Ž	6	0	0	0.0%
C05	Nepece	M	17	1	1	5.9%
	Palate	Ž	10	0	0	0.0%
C06	Usta, drugi delovi	M	14	0	0	0.0%
	Mouth, other & unspecified parts	Ž	39	0	0	0.0%
C07	Parotidna žlezda	M	33	1	1	3.0%
	Parotid gland	Ž	23	0	0	0.0%
C08	Pljuvačna žlezda	M	13	0	0	0.0%
	Other & unspec. major salivary gl.	Ž	8	0	0	0.0%
C09	Krajnik	M	29	0	0	0.0%
	Tonsil	Ž	8	1	1	12.5%
C10	Orofarings	M	11	0	0	0.0%
	Oropharynx	Ž	4	0	0	0.0%
C11	Nasofarings	M	26	2	2	7.7%
	Nasopharynx	Ž	12	0	0	0.0%
C12	Piriformni sinus	M	2	0	0	0.0%
	Pyiform sinus	Ž	0	0	0	0.0%
C13	Hipofarings	M	50	1	1	2.0%
	Hypopharynx	Ž	9	1	1	11.1%
C14	Usne, usta, ždrelo, drugi delovi	M	7	0	0	0.0%
	Other and ill def. sites in the lip, oral cavity & pharynx	Ž	1	0	0	0.0%
C15	Jednjak	M	162	7	7	4.3%
	Oesophagus	Ž	40	3	3	7.5%
C16	Želudac	M	609	37	37	6.1%
	Stomach	Ž	359	63	63	17.5%
C17	Tanko crevo	M	37	0	0	0.0%
	Small intestine	Ž	27	1	1	3.7%
C18	Debelo crevo	M	793	52	52	6.6%
	Colon	Ž	606	16	16	2.6%
C19	Rektosigmoidni prelaz	M	125	10	10	8.0%
	Rectosigmoid junction	Ž	86	3	3	3.5%
C20	Rektum	M	717	29	29	4.0%
	Rectum	Ž	453	20	20	4.4%
C21	Anus i analni kanal	M	27	0	0	0.0%
	Anus & anal canal	Ž	18	0	0	0.0%
C22	Jetra, žučni kanali	M	260	39	39	15.0%
	Liver & intrahepatic bile ducts	Ž	168	45	45	26.8%
C23	Žučna kesa	M	28	3	3	10.7%
	Gallbladder	Ž	84	4	4	4.8%
C24	Žučni kanali, drugi delovi	M	32	2	2	6.3%
	Biliary tract, other & unspec. parts	Ž	41	1	1	2.4%
C25	Pankreas	M	325	32	32	9.8%
	Pancreas	Ž	309	29	29	9.4%
C26	Org. za var., ned. odred. lok.	M	31	2	2	6.5%
	Other & ill-defined digestive organs	Ž	30	1	1	3.3%
C30	Nosna šupljina i srednje uvo	M	12	0	0	0.0%
	Nasal cavity & middle ear	Ž	8	1	1	12.5%
C31	Nosni sinusi	M	22	1	1	4.5%
	Accessory sinuses	Ž	10	0	0	0.0%
C32	Larings	M	489	8	8	1.6%
	Larynx	Ž	59	2	2	3.4%
C33	Traheja	M	8	0	0	0.0%
	Trachea	Ž	8	0	0	0.0%
C34	Bronh i pluća	M	2677	321	321	12.0%
	Bronchus & lung	Ž	797	121	121	15.2%
C37	Timus	M	1	0	0	0.0%
	Thymus	Ž	8	0	0	0.0%
C38	Srce, mediastinum, pleura	M	35	2	2	5.7%
	Heart, mediastinum & pleura	Ž	21	1	1	4.8%
C39	Toraks, druge lokalizacije	M	1	0	0	0.0%
	Other & ill-def. in the res. sys.	Ž	5	0	0	0.0%
C40	Kosti i zglobovi, hrskavice udova	M	34	0	0	0.0%
	Bone & articular cartilage of limbs	Ž	24	0	0	0.0%
C41	Kosti i zglobovi, hrskav., dr. lok.	M	39	4	4	10.3%
	Bone & articular cartilage of other	Ž	23	5	5	21.7%
C43	Koža, maligni melanom	M	185	4	4	2.2%
	Malignant melanoma of skin	Ž	179	3	3	1.7%
C44	Koža, drugi mal. tumori	M	1370	10	10	0.7%
	Skin, other malignomas	Ž	1269	14	14	1.1%
C45	Mezoteliom	M	4	0	0	0.0%
	Mesothelioma	Ž	2	0	0	0.0%
C46	Kaposijev sarkom	M	1	0	0	0.0%
	Kaposi's sarcoma	Ž	3	0	0	0.0%
C47	Periferni nervi i aut. ner. sis.	M	4	0	0	0.0%
	Peripheral nerves & auton. nerv. sys.	Ž	6	0	0	0.0%
C48	Peritoneum i retroperitoneum	M	21	4	4	19.0%
	Retroperitoneum & peritoneum	Ž	27	4	4	14.8%
C49	Vezivna i meka tkiva, drugi	M	89	1	1	1.1%
	Other connective and soft tissue	Ž	53	1	1	1.9%
C50	Dojka	M	60	1	1	1.7%
	Breast	Ž	2617	118	118	4.5%

Tabela 17.1 Ukupan broj novoobolelih i broj novoobolelih od raka sa procentom registrovanih samo na osnovu prijave smrti, prema primarnoj lokalizaciji i polu, centralna Srbija, 2005. godina (nastavak)

Table 17.1 Total number of new cancer cases and number and percentage of cases registered from death certificates only, by primary site and sex, Central Serbia, 2005 (continued)

MKB-10 (ICD-10) Sifra (Code) Ukupno (All)	Primarna lokalizacija Primary site	POL SEX M (Male) Z (Female)	Ukupno (All) 12679 11690	Broj registrovanih samo na osnovu prijave smrti Number of cases registered from death certificates only	
				749	5.9%
				590	5.0%
C51	Vulva	Ž	84	4	4.8%
	Vulva				
C52	Vagina	Ž	20	1	5.0%
	Vagina				
C53	Grlić materice Cervix uteri	Ž	948	5	0.5%
C54	Materica, telo Corpus uteri	Ž	702	4	0.6%
C55	Materica, neoznačeni deo Uterus, unspecified part	Ž	36	16	44.4%
C56	Jajnik Ovary	Ž	500	12	2.4%
C57	Ženski gen.org., dr. neoz. lok. Other & unspec.parts of fem. gen.org.	Ž	32	0	0.0%
C58	Placenta Placenta	Ž	0	0	0.0%
C60	Penis Penis	M	46	1	2.2%
C61	Prostata Prostate	M	1197	47	3.9%
C62	Testis Testis	M	161	4	2.5%
C63	Muški gen. org., dr. neoz. org. Other & unspec. male genital organs	M	7	0	0.0%
C64	Bubreg Kidney, except renal pelvis	M Ž	280 178	8 9	2.9% 5.1%
C65	Bubrežna karlica Renal pelvis	M Ž	32 28	0 0	0.0% 0.0%
C66	Ureter Ureter	M Ž	17 20	1 0	5.9% 0.0%
C67	Mokraćna bešika Bladder	M Ž	821 270	19 5	2.3% 1.9%
C68	Urinarni organi, dr. neoz. org. Other & unspecified urinary organs	M Ž	6 4	0 0	0.0% 0.0%
C69	Okno, pripojni oka Eye and adnexa	M Ž	32 26	3 0	9.4% 0.0%
C70	Moždanice Meninges	M Ž	22 36	0 0	0.0% 0.0%
C71	Mozak Brain	M Ž	311 256	20 20	6.4% 7.8%
C72	Centralni ner. sis., dr. delovi Spinal cord, cran. nerv. & oth. parts of CNS	M Ž	9 12	2 1	22.2% 8.3%
C73	Štitasta žlezda Thyroid gland	M Ž	36 123	0 3	0.0% 2.4%
C74	Nadbubrežna žlezda Adrenal gland	M Ž	11 12	1 1	9.1% 8.3%
C75	Endokrine žlezde, druge Other endocrine glands & related structures	M Ž	13 6	0 0	0.0% 0.0%
C76	Ostale lokalizacije Other & ill defined sites	M Ž	41 67	8 19	19.5% 28.4%
C77-C80	Sekundarne lok., bez ozn. lok. Unspec. mal.neo.of lymph nod. & without of spec.of site	M Ž	318 244	22 16	6.9% 6.6%
C81	Hodgkinova bolest Hodgkin's disease	M Ž	109 96	2 0	1.8% 0.0%
C82	Ne-Hodgkinov lim., folikularni Follicular non-Hodgkin's lymphoma	M Ž	75 58	1 0	1.3% 0.0%
C83	Ne-Hodgkinov lim., difuzni Diffuse non-Hodgkin's lymphoma	M Ž	69 56	3 0	4.3% 0.0%
C84	Periferni i kožni lim. T-ćelija Peripheral & cutaneous T-cell lymphomas	M Ž	6 6	0 0	0.0% 0.0%
C85	Ne-Hodgkinovi limfomi, drugi Other & unspecified types of non-Hodgkin's lymphoma	M Ž	105 75	3 3	2.9% 4.0%
C88	Zloćudne imunoprolifer. bolesti Malignant immunoproliferative diseases	M Ž	3 3	0 0	0.0% 0.0%
C90	Mult. mijelom i zloć. tum. plaz. ćel. Multiple myeloma and malignant plasma cell neoplasms	M Ž	79 66	8 5	10.1% 7.6%
C91	Limfoidna leukemija Lymphoblastic, lymphoid leukaemia	M Ž	138 90	4 5	2.9% 5.6%
C92	Mijeloidna leukemija Myeloid leukaemia	M Ž	100 71	3 1	3.0% 1.4%
C93	Monocitna leukemija Monocytic leukaemia	M Ž	7 4	2 0	28.6% 0.0%
C94	Leukemije, druge Other leukaemias of specified cells	M Ž	4 7	1 0	25.0% 0.0%
C95	Leukemije, neoznačene Leukaemia, unspecified cell type	M Ž	16 19	8 4	50.0% 21.1%
C96	Dr. zloć. tum. hematop. sist. Other & unspec. mal.neoplasm of lymphoid, haemato. & related tissue	M Ž	0 1	0 0	0.0% 0.0%
C00-C96 (C44)	Sve lokalizacije, bez kože All sites but skin	M Ž	11309 10421	739 576	6.5% 5.5%

Tabela 18. Broj novoobolelih slučajeva od raka, prema primarnoj lokalizaciji (MKB-10), uzrastu i polu, centralna Srbija, 2005. godina

Table 18. Number of new cancer cases by primary site (ICD-10), age and sex, Central Serbia, 2005

MKB-10 (ICD-10) Šifra (Code)	Primarna lokalizacija Primary site	POL SEX	Ukupno (All)	U Z R A S T (A g e)																% 100.0%	
				0-4	5-9	10-14	15-19	20-24	25-29	30-34	35-39	40-44	45-49	50-54	55-59	60-64	65-69	70-74	75+		
Ukupno (All)		M (Male) Ž (Female)	12679 11690	26	21	15	31	76	86	136	159	269	608	1268	1493	1500	2127	2389	2475		
C00	Usna Lip	M Ž	92 43	-	-	-	-	-	1	1	-	3	1	2	2	5	8	8	13	26	0.7%
C01	Jezik, koren Base of tongue	M Ž	35 12	-	-	-	-	-	-	-	-	3	2	1	1	4	1	2	2	0.3%	
C02	Jezik, drugi delovi Tongue, other & unspecified parts	M Ž	33 7	-	-	-	-	-	-	-	-	2	3	8	7	5	4	1	3	0.3%	
C03	Desni Gum	M Ž	7 12	-	-	-	-	-	1	-	-	-	-	1	1	2	-	2	1	0.1%	
C04	Pod usta Floor of mouth	M Ž	41 6	-	-	-	-	-	1	-	1	4	8	8	4	6	6	3	0.3%		
C05	Nepece Palate	M Ž	17 10	-	-	-	1	-	-	-	-	1	3	4	2	3	-	-	3	0.1%	
C06	Usta, drugi delovi Mouth, other & unspecified parts	M Ž	14 39	-	-	-	1	1	2	3	8	6	2	4	3	3	2	4	0.3%		
C07	Parotidna žlezda Parotid gland	M Ž	33 23	-	-	-	-	-	2	1	3	2	2	3	5	6	9	0.3%			
C08	Pljučna žlezda Other & unspec. major salivary gl.	M Ž	13 8	-	-	-	-	1	-	1	2	2	2	2	2	2	2	2	0.1%		
C09	Krajnik Tonsil	M Ž	29 8	-	-	-	-	1	1	1	3	3	8	4	1	5	1	0.2%			
C10	Orofarings Oropharynx	M Ž	11 4	-	-	-	-	-	-	2	1	-	3	-	1	2	1	1	0.1%		
C11	Nasofarings Nasopharynx	M Ž	26 12	-	-	-	1	1	-	1	3	4	6	4	3	3	-	1	0.2%		
C12	Piriformni sinus Pyriform sinus	M Ž	2 0	-	-	-	-	-	-	-	-	-	1	-	-	-	1	-	0.0%		
C13	Hipofarings Hypopharynx	M Ž	50 9	-	-	-	-	1	-	-	3	7	13	7	7	6	6	0.4%			
C14	Usne, usta, ždrelco, drugi delovi Other and ill-def. sites in the lip, oral cavity & pharynx	M Ž	7 1	-	-	-	-	-	-	-	-	-	-	1	-	2	3	1	0.1%		
C15	Jednjak Oesophagus	M Ž	162 40	-	-	-	-	-	1	-	2	9	27	32	19	35	20	17	1.3%		
C16	Želudac Stomach	M Ž	609 359	-	-	-	1	2	3	7	16	14	31	24	37	63	72	89	3.1%		
C17	Tanko crevo Small intestine	M Ž	37 27	-	-	-	1	-	1	2	3	2	6	2	4	3	13	0.3%			
C18	Debelo crevo Colon	M Ž	793 606	-	-	-	1	3	6	6	7	22	61	59	106	116	160	5.2%			
C19	Rektosigmoidni prelaz Rectosigmoid junction	M Ž	125 86	-	-	1	-	-	4	4	5	10	18	25	17	17	17	1.0%			
C20	Rektum Rectum	M Ž	717 453	-	-	-	2	1	6	11	13	19	61	94	83	120	157	150	5.7%		
C21	Anus i analni kanal Anus & anal canal	M Ž	27 18	-	-	-	-	-	1	1	-	1	1	3	8	3	4	0.2%			
C22	Jetra, žučni kanali Liver & intrahepatic bile ducts	M Ž	260 168	-	-	1	1	2	2	3	5	10	20	32	27	35	51	70	2.1%		
C23	Žučna kesa Gallbladder	M Ž	28 84	-	-	-	-	-	-	1	-	-	4	10	12	14	12	31	0.7%		
C24	Žučni kanali, drugi delovi Biliary tract, other & unspec. parts	M Ž	32 41	-	-	-	-	-	-	2	-	4	4	1	2	6	11	6	0.3%		
C25	Pankreas Pancreas	M Ž	325 309	-	-	-	1	-	1	2	3	16	39	44	48	53	58	60	2.6%		
C26	Org. za var., ned. odrež. lok. Other & ill-defined digestive organs	M Ž	31 30	-	-	-	-	-	1	1	1	1	5	3	1	3	8	7	0.3%		
C30	Nosna šupljina i srednje uvo Nasal cavity & middle ear	M Ž	12 8	-	-	-	1	1	-	-	-	-	-	2	2	2	2	0.1%			
C31	Nosni sinusi Accessory sinuses	M Ž	22 10	-	1	-	-	-	-	1	1	1	1	1	4	5	2	5	0.2%		
C32	Larings Larynx	M Ž	489 59	1	-	-	-	1	-	18	48	91	75	66	76	70	42	3.9%			
C33	Tracheja Trachea	M Ž	8 8	-	-	-	-	-	-	1	-	-	3	3	-	1	-	1	0.1%		
C34	Bronh i pluća Bronchus & lung	M Ž	2677 797	-	-	-	2	3	6	12	43	156	371	397	362	486	486	353	21.1%		
C37	Timus Thymus	M Ž	1 8	-	-	-	-	-	1	-	-	-	-	-	-	-	-	-	0.0%		
C38	Srce, mediastinum, pleura Heart, mediastinum & pleura	M Ž	35 21	1	-	-	-	-	-	2	1	3	8	6	6	5	3	0.3%			
C39	Toraks, druge lokalizacije Other & ill-def. in the res. sys.	M Ž	1 5	-	-	-	1	-	-	1	-	-	-	-	-	-	1	-	0.0%		
C40	Kosti i zglobovi, hrskavice udova Bone & articular cartilage of limbs	M Ž	34 24	2	1	1	1	4	3	-	-	3	6	1	2	5	3	1	0.3%		
C41	Kosti i zglobovi, hrskavice, dr. lok. Bone & articular cartilage of other	M Ž	39 23	1	3	2	1	-	-	1	-	1	4	12	3	5	4	2	0.3%		
C43	Koža, maligni melanom Malignant melanoma of skin	M Ž	185 179	-	-	-	-	-	8	7	10	6	24	25	22	19	25	39	1.5%		
C44	Koža, drugi maligni tumori Skin, other malignomas	M Ž	1370 1269	-	1	-	2	3	5	6	15	15	46	101	113	142	226	287	409	10.8%	
C45	Mezotelijom Mesothelioma	M Ž	4 2	-	-	-	-	-	-	-	-	-	1	1	-	-	1	1	0.0%		
C46	Kaposijev sarkom Kaposi's sarcoma	M Ž	1 3	-	-	-	-	-	-	-	-	-	-	1	-	-	1	1	0.0%		
C47	Periferni nervi i aut. ner. sis. Peripheral nerves & auton. nerv. sys.	M Ž	4 6	-	-	-	-	-	1	-	-	-	2	-	-	-	-	-	0.1%		
C48	Peritoneum i retroperitoneum Retroperitoneum & peritoneum	M Ž	21 27	-	-	-	1	-	-	2	1	2	1	5	3	4	2	2	0.2%		
C49	Vezivna i meka tkiva, drugi Other connective and soft tissue	M Ž	89 53	1	2	1	3	2	1	-	3	4	4	10	8	6	12	14	18	0.7%	
C50	Dojka Breast	M Ž	60 2617	-	-	-	1	1	-	2	4	8	8	8	10	10	10	8	0.5%		

Tabela 18.1 Broj novoobolelih slučajeva od raka, prema primarnoj lokalizaciji (MKB-10), uzrastu i polu, centralna Srbija, 2005.godina (nastavak)

Table 18.1 Number of new cancer cases by primary site (ICD-10), age and sex, Central Serbia, 2005 (continued)

MKB-10 (ICD-10) Šifra (Code)	Primarna lokalizacija Primary site	POL SEX	Ukupno (All)	U Z R A S T (A g e)											%					
				0-4	5-9	10-14	15-19	20-24	25-29	30-34	35-39	40-44	45-49	50-54		55-59	60-64	65-69	70-74	75+
Ukupno (All)		M (Male)	12679	26	21	15	31	76	86	136	159	269	608	1268	1493	1500	2127	2389	2475	100.0%
		Ž (Female)	11690	26	9	10	31	52	98	172	345	549	892	1355	1407	1181	1715	1708	2140	
C51	Vulva	Ž	84	-	-	-	-	1	-	-	-	1	5	6	5	10	19	18	19	0.7%
C52	Vagina	Ž	20	-	-	-	-	-	-	-	-	-	1	2	3	4	1	4	5	0.2%
C53	Grlić materice Cervix uteri	Ž	948	-	-	-	-	3	8	40	98	105	134	157	118	78	74	69	64	8.1%
C54	Materica, telo Corpus uteri	Ž	702	-	-	-	-	-	3	3	8	22	42	89	112	86	135	96	106	6.0%
C55	Materica, neoznačeni deo Uterus, unspecified part	Ž	36	-	-	-	-	-	1	-	-	1	4	4	5	1	3	10	7	0.3%
C56	Jajnik Ovary	Ž	500	-	-	-	5	4	9	12	27	39	45	58	66	56	74	53	52	4.3%
C57	Ženski gen.org., dr. neoz. lok. Other & unspc.parts of fem.gen.org.	Ž	32	-	-	-	-	-	-	4	2	3	4	2	3	1	7	6	6	0.3%
C58	Placenta Placenta	Ž	0	-	-	-	-	-	-	-	-	-	-	-	-	-	-	-	-	0.0%
C60	Penis Penis	M	46	-	-	-	-	-	-	-	2	-	1	6	8	4	9	7	9	0.4%
C61	Prostata Prostate	M	1197	-	-	-	-	-	-	-	-	2	11	22	69	126	224	315	428	9.4%
C62	Testis Testis	M	161	-	1	-	5	24	18	32	21	18	6	13	4	1	9	5	4	1.3%
C63	Muški gen.org., dr. neoz. org. Other & unspc. male genital organs	M	7	-	-	-	-	-	2	-	-	-	-	-	1	1	1	1	1	0.1%
C64	Bubreg Kidney, except renal pelvis	M	280	3	-	-	-	2	3	5	4	8	25	37	32	46	55	28	32	2.2%
C65	Bubrežna karlica Renal pelvis	M	32	-	-	-	-	1	-	-	1	-	2	1	4	7	7	4	5	0.3%
C66	Ureter Ureter	M	17	-	-	-	-	-	-	-	-	-	1	1	-	4	3	2	6	0.1%
C67	Mokraćna bešika Bladder	M	821	-	-	-	-	2	1	12	6	20	34	73	86	91	152	156	188	6.5%
C68	Urinarni organi, dr. neoz. org. Other & unspecified urinary organs	M	6	-	-	-	-	-	-	1	-	1	-	1	-	1	-	-	2	0.0%
C69	Oko, pripojni oka Eye and adnexa	M	32	1	-	1	-	-	1	3	-	-	3	-	4	4	3	8	4	0.3%
C70	Moždance Meninges	M	22	1	-	-	-	-	-	-	1	-	1	2	4	3	4	4	2	0.2%
C71	Mozak Brain	M	311	2	2	3	3	10	9	11	9	32	38	36	33	49	47	24	23	2.5%
C72	Centralni ner. sis., dr. delovi Spinal cord, cran. nerv. & oth. parts of CNS	M	9	2	1	-	-	-	1	-	-	-	-	1	2	-	-	-	1	0.1%
C73	Štitasta žlezda Thyroid gland	M	36	-	-	-	-	-	-	1	-	2	1	3	6	5	1	7	5	0.3%
C74	Nadbubrežna žlezda Adrenal gland	M	11	-	-	1	1	4	3	9	9	10	10	14	19	5	13	14	10	1.1%
C75	Endokrine žlezde, druge Other endocrine glands & related structures	M	13	-	-	-	1	-	-	-	1	-	1	1	1	3	2	1	2	0.1%
C76	Ostale lokalizacije Other & ill defined sites	M	41	-	-	-	-	-	-	-	-	-	2	6	4	7	6	1	15	0.3%
C77-C80	Sekundarne lok., bez ozn. lok. Unspec.mal.neo.of lymph.nod.&without of spec	M	318	3	6	-	-	2	4	2	7	8	13	32	42	36	51	59	53	2.5%
C81	Hodgkinova bolest Hodgkin's disease	M	109	1	-	1	4	13	9	10	6	3	12	13	10	6	5	7	9	0.9%
C82	Ne-Hodgkinov lim., folikularni Follicular non-Hodgkin's lymphoma	M	75	2	-	-	3	1	3	1	4	3	5	7	9	8	12	10	7	0.6%
C83	Ne-Hodgkinov lim., difuzni Diffuse non-Hodgkin's lymphoma	M	69	-	2	-	1	-	3	2	-	4	4	3	6	7	14	13	10	0.5%
C84	Periferni i kožni lim. T-ćelija Peripheral & cutaneous T-cell lymphomas	M	6	-	-	-	1	-	-	1	-	1	-	1	1	-	1	-	3	0.1%
C85	Ne-Hodgkinovi limfomi, drugi Other & unspc. types of non-Hodgkin's lymph	M	105	-	1	-	-	-	2	3	-	7	13	16	15	9	16	11	12	0.8%
C88	Zloćudne imunoprolifer. bolesti Malignant immunoproliferative diseases	M	3	-	-	-	-	-	-	-	-	-	-	2	-	1	-	-	-	0.0%
C90	Mult. mijelom i zloć. tum. plaz. ćel. Multiple myeloma and malignant plasma cell n	M	79	-	-	-	-	-	-	-	-	6	3	11	10	11	17	12	9	0.6%
C91	Limfoidna leukemija Lymphoblastic, lymphoid leukaemia	M	138	5	3	3	2	2	2	2	-	4	4	8	23	11	19	20	30	1.1%
C92	Mijeloidna leukemija Myeloid leukaemia	M	100	-	-	-	-	3	2	4	7	3	8	11	10	12	10	16	14	0.8%
C93	Monocitna leukemija Monocytic leukaemia	M	7	-	-	-	-	1	-	-	-	-	-	-	1	1	3	1	0.1%	
C94	Leukemije, druge Other leukaemias of specified cells	M	4	-	-	-	-	-	-	-	1	-	-	1	-	1	-	-	1	0.0%
C95	Leukemije, neoznačene Leukaemia, unspecified cell type	M	16	1	-	-	-	-	1	-	-	-	1	1	2	6	2	2	2	0.1%
C96	Dr. zloć. tum. hematop. sist. Other&unsp.mal.neo.of lym.,haem.& tissue	M	0	-	-	-	-	-	-	-	-	-	-	-	-	-	-	-	-	0.0%
C00-C96 (C44)	Sve lokalizacije, bez kože All sites but skin	M	11309	26	21	15	29	73	81	130	144	254	562	1167	1380	1358	1901	2102	2066	89.2%
		Ž	10421	26	8	10	28	49	96	161	322	527	845	1263	1301	1054	1507	1449	1775	89.1%

Tabela 19. Incidencija od raka na 100.000 stanovnika prema primarnoj lokalizaciji (MKB-10), uzrastu i polu, centralna Srbija, 2005. godina

Table 19. Cancer incidence rates per 100.000 population by primary site (ICD-10), age and sex, Central Serbia, 2005

MKB-10 (ICD-10) Šifra (Code)	Primarna lokalizacija Primary site	POL SEX	Sirova inc. CR	U Z R A S T (A g e)																Stand. inc. ASR
				0-4	5-9	10-14	15-19	20-24	25-29	30-34	35-39	40-44	45-49	50-54	55-59	60-64	65-69	70-74	75+	
Ukupno (All)		M (Male) Ž (Female)	480.1 419.4	18.0 19.0	15.2 6.9	9.6 6.8	18.1 19.0	40.5 28.7	45.3 52.6	75.4 94.9	93.2 197.2	152.3 300.9	315.1 447.3	575.4 598.0	856.6 1009.0	1170.4 1028.6	1512.1 1036.5	1838.7 1090.0	1768.3 238.6	
C00	Usna Lip	M Ž	3.5 1.5	- -	- -	- -	- -	0.5 0.5	0.6 -	- -	0.6 -	2.1 0.5	2.3 0.9	3.4 1.1	5.5 3.5	13.5 4.8	16.9 4.9	18.6 6.1	1.8 0.8	
C01	Jezik, koren Base of tongue	M Ž	1.3 0.4	- -	- -	- -	- -	- -	- -	- 1.7	1.7 -	1.0 -	4.1 -	2.3 0.4	3.9 -	3.6 -	3.8 0.6	1.4 0.9	0.8 0.3	
C02	Jezik, drugi delovi Tongue, other & unspecified parts	M Ž	1.2 0.3	- -	- -	- -	- -	- -	- -	- -	1.1 -	1.6 -	3.6 0.4	4.0 0.5	3.9 1.4	2.8 -	0.8 -	2.1 0.5	0.8 0.1	
C03	Desni Gum	M Ž	0.3 0.4	- -	- -	- -	- -	- 0.5	0.6 -	- -	- -	- 0.5	1.5 -	0.4 -	0.6 1.1	- -	1.4 -	0.8 1.2	0.7 0.9	0.2 0.3
C04	Pod usta Floor of mouth	M Ž	1.6 0.2	- -	- -	- -	- -	- -	0.6 -	- 1.1	0.6 0.5	2.1 -	3.6 0.9	4.6 -	3.1 -	4.3 0.6	4.6 -	2.1 -	0.9 0.2	
C05	Nepece Palate	M Ž	0.6 0.4	- -	- -	0.6 -	- -	- -	- 0.6	- -	0.6 -	1.6 0.5	1.8 -	1.1 0.4	2.3 0.7	- 0.6	- -	2.1 1.2	0.5 0.9	0.5 0.2
C06	Usta, drugi delovi Mouth, other & unspecified parts	M Ž	0.5 1.4	- -	- -	- -	0.6 0.5	1.1 -	1.1 1.7	4.4 3.0	0.9 0.9	2.1 3.0	0.9 0.9	1.7 1.6	1.6 1.4	1.5 1.5	2.1 1.9	1.0 1.0	0.3 0.3	
C07	Parotidna žlezda Parotid gland	M Ž	1.2 0.8	- -	- -	- -	- -	- -	1.1 0.6	0.6 0.6	1.6 0.5	0.9 1.0	1.1 -	2.3 1.4	3.6 1.8	4.6 2.4	6.4 1.9	0.7 0.5	0.3 0.3	
C08	Pljučna žlezda Other & unspec. major salivary gl.	M Ž	0.5 0.3	- -	- -	- -	- 0.5	- -	- 0.6	- -	1.1 -	1.0 -	0.5 0.9	1.1 -	1.6 0.6	- -	1.5 0.9	1.4 0.3	0.3 0.2	
C09	Krajnik Tonsil	M Ž	1.1 0.3	- -	- -	- -	- 0.5	0.6 -	0.6 0.6	1.6 0.5	1.4 0.4	4.6 0.5	3.1 0.7	0.7 0.6	3.8 0.6	0.5 0.6	0.7 0.5	0.7 0.2	0.7 0.3	
C10	Orofaringis Oropharynx	M Ž	0.4 0.1	- -	- -	- -	- -	- -	- 1.2	0.6 0.6	- -	1.4 -	0.8 -	1.4 0.9	0.8 -	1.4 -	0.8 -	0.7 -	0.5 0.1	
C11	Nasofaringis Nasopharynx	M Ž	1.0 0.4	- -	- -	- -	0.5 0.5	- -	0.6 -	0.6 -	1.6 1.0	1.8 0.4	3.4 1.6	3.1 -	2.1 -	2.3 -	0.7 0.5	0.3 0.3	0.7 0.3	
C12	Piriformni sinus Pyriform sinus	M Ž	0.1 0.0	- -	- -	- -	- -	- -	- -	- -	- -	- -	0.5 -	- -	- -	- -	0.8 -	- -	0.0 0.0	
C13	Hipofaringis Hypopharynx	M Ž	1.9 0.3	- -	- -	- -	- 0.5	0.6 -	- -	- -	1.6 1.0	3.2 0.9	7.5 0.5	5.5 -	5.0 1.8	4.6 -	4.3 2.3	1.1 0.7	0.2 0.1	
C14	Usne, usta, zdrelo, drugi delovi Other and ill-def. sites in the lip, oral cavity & ph	M Ž	0.3 0.0	- -	- -	- -	- -	- -	0.6 -	- -	- -	- -	0.4 -	0.6 -	- -	1.4 -	2.3 0.7	0.1 0.0	0.1 0.0	
C15	Jednjak Oesophagus	M Ž	6.1 1.4	0.7 -	- -	- -	- -	- -	0.6 -	1.1 1.1	4.7 1.0	12.3 0.9	18.4 3.7	14.8 2.1	14.8 4.8	15.4 3.6	12.1 3.3	3.6 0.8	3.6 0.8	
C16	Želudac Stomach	M Ž	23.1 12.9	- -	- -	- 0.6	- -	1.1 1.1	1.6 1.7	2.9 4.0	10.2 8.8	15.0 7.0	26.8 13.7	48.8 12.8	73.3 25.6	102.4 37.8	137.8 43.7	122.9 42.0	16.5 6.5	
C17	Tanko crevo Small intestine	M Ž	1.4 1.0	- -	- -	- -	0.5 -	- 0.5	- -	0.6 1.1	1.6 1.1	0.9 -	3.4 -	1.6 -	1.6 0.7	2.8 4.2	3.0 2.8	2.3 0.8	0.8 0.5	
C18	Debelo crevo Colon	M Ž	30.0 21.7	- -	- -	- 0.6	1.1 1.6	1.7 3.3	2.9 3.4	10.2 3.8	15.0 11.0	26.8 26.9	48.8 31.5	73.3 40.8	102.4 63.6	137.8 70.4	122.9 75.4	16.5 10.5		
C19	Rektosigmoidni prelaz Rectosigmoid junction	M Ž	4.7 3.1	- -	0.6 -	- -	- -	- -	2.3 1.1	2.3 2.7	2.6 2.0	4.5 5.7	10.3 3.7	19.5 8.3	21.2 11.5	13.1 11.5	17.1 8.0	2.9 1.6		
C20	Rektum Rectum	M Ž	27.2 16.3	- -	- -	- 0.6	1.1 -	0.5 -	3.3 2.9	6.4 6.6	7.4 11.5	9.8 21.2	27.7 18.7	53.9 27.7	64.8 58.8	85.3 43.1	120.8 56.6	107.2 8.0	15.0 8.0	
C21	Anus i analni kanal Anus & anal canal	M Ž	1.0 0.6	- -	- -	- -	- -	0.6 -	0.6 -	0.5 -	0.5 1.5	0.6 0.9	2.3 -	0.7 0.3	2.3 1.8	6.2 1.9	2.1 0.3	0.6 0.3		
C22	Jetra, žučni kanali Liver & intrahepatic bile ducts	M Ž	9.8 6.0	0.7 -	0.6 -	0.6 -	1.1 0.6	0.5 -	1.1 1.1	2.8 1.6	5.2 3.5	9.1 3.1	18.4 9.1	21.1 12.4	24.9 12.6	39.3 21.2	50.0 26.4	5.5 2.9		
C23	Žučna kesica Gallbladder	M Ž	1.1 3.0	- -	- -	- -	- -	- -	- -	0.6 -	0.6 -	0.5 0.5	1.8 5.3	3.6 8.3	10.0 8.4	2.1 7.3	2.6 14.6	0.5 1.4		
C24	Žučni kanali, drugi delovi Biliary tract, other & unspec. parts	M Ž	1.2 1.5	- -	- -	- -	- -	- 0.5	- -	1.1 -	0.6 0.5	1.0 0.9	1.8 3.2	1.6 1.4	4.3 4.8	8.5 4.2	4.3 5.7	0.6 0.7		
C25	Pankreas Pancreas	M Ž	12.3 11.1	- -	- -	- -	0.5 -	- 0.6	1.2 1.1	1.7 3.3	8.3 5.0	17.7 9.7	25.2 16.5	37.5 15.2	37.7 27.6	44.6 44.9	42.9 44.8	7.0 5.0		
C26	Org. za var., ned. odrež. lok. Other & ill-defined digestive organs	M Ž	1.2 1.1	- -	- -	- -	- -	- -	0.6 -	0.6 0.5	0.5 0.5	1.4 2.2	1.1 1.6	3.1 0.7	4.3 1.8	4.6 4.9	5.7 3.3	0.6 0.5		
C30	Nosna šupljina i srednje uvo Nasal cavity & middle ear	M Ž	0.5 0.3	- -	- -	0.6 -	0.5 -	- -	0.6 -	- -	- -	- -	- 1.1	- 1.2	1.4 1.2	3.1 1.2	2.1 0.9	0.3 0.1		
C31	Nosni sinusi Accessory sinuses	M Ž	0.8 0.4	0.7 -	- -	- -	- -	- -	0.6 -	0.6 -	0.5 -	0.5 1.3	0.6 -	3.1 0.6	3.6 2.4	1.5 0.9	3.6 1.2	0.6 0.4		
C32	Larings Larynx	M Ž	18.5 2.1	0.7 -	- -	- -	0.5 -	- -	0.6 -	10.2 2.7	24.9 3.5	41.3 6.2	43.0 4.8	51.5 4.8	54.0 4.2	53.9 3.0	11.4 1.3	0.2 0.2		
C33	Traheja Trachea	M Ž	0.3 0.3	- -	- -	- -	- -	- -	- 0.6	- -	- -	- -	1.4 0.5	1.7 2.1	0.7 1.2	- -	0.2 0.5	0.2 0.2		
C34	Bronh i pluća Bronchus & lung	M Ž	101.4 28.6	- -	- -	- 0.6	1.1 1.1	1.6 1.7	3.3 2.9	7.0 14.3	24.3 28.6	80.8 53.4	168.4 64.1	227.8 62.9	345.5 74.4	374.1 78.3	252.2 55.6	58.9 15.6		
C37	Timus Thymus	M Ž	0.0 0.3	- -	- -	- -	- -	- 0.5	- -	0.6 -	- 0.5	- -	- 1.3	- 0.7	- 0.6	- -	- 0.5	0.2 0.2		
C38	Srce, mediastinum, pleura Heart, mediastinum & pleura	M Ž	1.3 0.8	0.7 -	- -	- 0.6	- -	- -	- -	1.1 -	0.5 -	1.4 1.8	4.6 1.1	4.7 2.8	4.3 1.8	3.8 0.6	2.1 2.4	0.9 0.4		
C39	Toraks, druge lokalizacije Other & ill-def. in the res.sys.	M Ž	0.0 0.2	- -	- -	0.6 -	- -	- -	- -	- 0.6	- -	- -	- 0.4	- -	- -	- -	0.8 -	- 0.9	0.0 0.1	
C40	Kosti i zglobovi, hrskavice udova Bone & articular cartilage of limbs	M Ž	1.3 0.9	1.4 -	0.7 1.4	0.6 1.2	0.5 0.6	2.1 1.1	1.7 1.1	- -	- 0.5	1.6 0.4	2.7 -	0.6 0.7	1.6 1.2	3.6 2.4	2.3 1.9	1.1 0.7		
C41	Kosti i zglobovi, hrskavice, dr. lok. Bone & articular cartilage of other	M Ž	1.5 0.8	0.7 -	1.9 0.7	1.2 0.6	0.5 0.6	- -	- 0.6	- -	0.6 -	0.5 0.4	1.8 1.1	6.9 2.8	2.3 1.2	3.6 1.8	3.1 2.4	1.4 0.6		
C43	Koža, maligni melanom Malignant melanoma of skin	M Ž	7.0 6.4	- -	- -	- -	- 1.1	1.6 1.6	3.9 4.6	6.0 8.0	9.3 8.0	10.9 9.3	14.3 6.4	17.2 15.2	13.5 15.6	19.2 8.5	27.9 17.4	4.2 3.9		
C44	Koža, drugi mal. tumori Skin, other malignomas	M Ž	51.9 45.5	- 0.8	- -	1.2 1.8	1.6 1.7	2.6 1.1	3.3 6.1	8.8 13.1	23.8 12.1	45.8 23.6	64.8 40.6	110.8 56.6	160.7 87.8	220.9 124.7	292.2 157.2	27.5 21.9		
C45	Mezoteliom Mesothelioma	M Ž	0.2 0.1	- -	- -	- -	- -	- -	- -	- -	- -	- -	0.5 0.4	0.6 0.5	- -	- -	0.8 -	0.7 0.0		
C46	Kaposijev sarkom Kaposi's sarcoma	M Ž	0.0 0.1	- -	- -	- -	- -	- -	- -	- -	- -	- -	- -	- 0.5	- -	0.7 -	- 0.6	0.0 0.5		
C47	Periferni nervi i auton. ner. sis. Peripheral nerves & auton. nerv. sys.	M Ž	0.2 0.2	- -	- -	- -	- -	- 0.5	0.6 -	- -	- 0.6	- 1.0	0.9 0.9	- -	0.8 -	- -	- -	- 0.2		
C48	Peritoneum i retroperitoneum Retroperitoneum & peritoneum	M Ž	0.8 1.0	0.7 -	- -	- -	0.5 -	- -	- 0.6	- -	1.2 -	0.6 0.5	1.0 1.0	- 0.5	0.6 3.5	3.9 2.4	2.1 3.1	1.4 0.6		
C49	Vezivna i meka tkiva, drugi Other connective and soft tissue	M Ž	3.4 1.9	0.7 2.2	1.5 -	0.6 -	1.7 -	1.1 -	0.5 -	1.1 2.3	0.5 1.6	1.0 1.0	4.5 4.9	4.6 2.1	4.7 3.5	8.5 4.2	10.3 4.2	12.9 1.4		
C50	Dojka Breast	M Ž	2.3 93.9	- -	- -	- -	0.5 0.6	0.5 6.4	0.5 15.5	0.5 45.7	0.5 95.4	1.1 155.4	2.1 159.3	3.6 205.5	4.6 184.6	6.2 212.9	7.1 183.3	5.7 161.3	1.4 56.1	

Tabela 19.1 Incidencija od raka na 100.000 stanovnika prema primarnoj lokalizaciji (MKB-10), uzrastu i polu, centralna Srbija, 2005. godina (nastavak)

Table 19.1 Cancer incidence rates per 100.000 population by primary site (ICD-10), age and sex, Central Serbia, 2005 (continued)

MKB-10 (ICD-10) Šifra (Code) Ukupno (All)	Primarna lokalizacija Primary site	POL SEX M (Male) Ž (Female)	Sirova inc. CR	U Z R A S T (A g e)																Stand. inc. ASR	
				0-4	5-9	10-14	15-19	20-24	25-29	30-34	35-39	40-44	45-49	50-54	55-59	60-64	65-69	70-74	75+		
C51	Vulva Vulva	Ž	3.0	-	-	-	-	0.6	-	-	-	-	0.5	2.5	2.6	2.7	6.9	11.4	10.9	9.0	1.5
C52	Vagina Vagina	Ž	0.7	-	-	-	-	-	-	-	-	-	-	0.5	0.9	1.6	2.8	0.6	2.4	2.4	0.4
C53	Grlić materice Cervix uteri	Ž	34.0	-	-	-	-	1.7	4.3	22.1	56.0	57.6	67.2	69.3	63.0	53.9	44.4	41.9	30.2	23.6	
C54	Materica, telo Corpus uteri	Ž	25.2	-	-	-	-	-	1.6	1.7	4.6	12.1	21.1	39.3	59.8	59.5	81.0	58.3	50.0	13.8	
C55	Materica, neoznačeni deo Uterus, unspecified part	Ž	1.3	-	-	-	-	-	0.5	-	-	0.5	2.0	1.8	2.7	0.7	1.8	6.1	3.3	0.7	
C56	Jajnik Ovary	Ž	17.9	-	-	-	3.1	2.2	4.8	6.6	15.4	21.4	22.6	25.6	35.2	38.7	44.4	32.2	24.5	11.5	
C57	Ženski gen.org., dr. neoz. lok. Other & unsp. parts of fem. gen.org.	Ž	1.1	-	-	-	-	-	-	-	-	2.3	1.1	1.5	1.8	1.1	2.1	0.6	4.2	2.8	0.7
C58	Placenta Placenta	Ž	0.0	-	-	-	-	-	-	-	-	-	-	-	-	-	-	-	-	-	0.0
C60	Penis Penis	M	1.7	-	-	-	-	-	-	-	-	1.2	-	0.5	2.7	4.6	3.1	6.4	5.4	6.4	1.0
C61	Prostata Prostate	M	45.3	-	-	-	-	-	-	-	-	-	1.1	5.7	10.0	39.6	98.3	159.2	242.4	305.8	22.2
C62	Testis Testis	M	6.1	-	0.7	-	2.9	12.8	9.5	17.7	12.3	10.2	3.1	5.9	2.3	0.8	6.4	3.8	2.9	5.5	
C63	Muški gen. org., dr. neoz. org. Other & unsp. male genital organs	M	0.3	-	-	-	-	-	-	1.1	-	-	-	-	-	0.6	0.8	0.7	0.8	0.7	0.2
C64	Bubreg Kidney, except renal pelvis	M	10.6	2.1	-	-	-	1.1	1.6	2.8	2.3	4.5	13.0	16.8	18.4	35.9	39.1	21.6	22.9	6.9	
C65	Bubrežna karlica Renal pelvis	M	1.2	-	-	-	-	-	0.5	-	-	0.6	-	0.5	2.3	5.5	5.0	3.1	3.6	0.8	
C66	Ureter Ureter	M	0.6	-	-	-	-	-	-	-	-	-	0.5	0.5	-	3.1	2.1	1.5	4.3	0.4	
C67	Mokraćna bešika Bladder	M	31.1	-	-	-	-	1.1	0.5	6.7	3.5	11.3	17.6	33.1	49.3	71.0	108.1	120.1	134.3	17.3	
C68	Urinarni organi, dr. neoz. org. Other & unspecified urinary organs	M	0.2	-	-	-	-	-	-	1.1	1.1	4.4	7.0	8.4	15.5	20.0	25.2	27.9	36.3	4.8	
C69	Oko, pripojni oka Eye and adnexa	M	1.2	0.7	-	0.6	-	-	0.5	1.7	-	-	-	1.6	-	2.3	3.1	2.1	6.2	2.9	0.8
C70	Moždanice Meninges	M	0.8	0.7	-	-	-	-	-	-	0.6	-	0.5	0.9	2.3	2.3	2.8	3.1	1.4	0.6	
C71	Mozak Brain	M	11.8	1.4	1.5	1.9	1.7	1.6	5.3	5.0	6.4	5.1	16.6	17.2	20.7	25.7	34.8	36.2	17.1	8.0	
C72	Centralni ner. sis., dr. delovi Spinal cord, cran. nerv. & oth. parts of CNS	M	0.3	1.4	0.7	-	-	-	0.5	-	-	0.6	-	-	0.6	1.6	-	-	0.7	0.4	
C73	Štitasta žlezda Thyroid gland	M	1.4	-	-	-	-	-	-	1.1	0.6	-	1.6	2.7	3.4	3.9	0.7	5.4	3.6	0.8	
C74	Nadbubrežna žlezda Adrenal gland	M	0.4	-	0.8	0.7	0.6	2.2	1.6	5.0	5.1	5.5	5.0	6.2	10.1	3.5	7.8	8.5	4.7	3.1	
C75	Endokrine žlezde, druge Other endocrine glands & related structures	M	0.5	-	-	-	0.6	-	-	-	0.6	-	0.5	0.5	0.9	2.1	1.4	-	0.8	1.4	0.3
C76	Ostale lokalizacije Other & ill defined sites	M	1.6	-	-	-	-	-	-	-	-	-	1.0	2.7	2.3	5.5	4.3	0.8	10.7	0.9	
C77-C80	Sekundarne lok., bez ozn. lok. Unspec. mal. neo. of lymph nod. & without of spec	M	12.0	2.1	4.4	-	-	1.1	2.1	1.1	4.1	4.5	6.7	14.5	24.1	28.1	36.3	45.4	37.9	7.5	
C81	Hodgkinova bolest Hodgkin's disease	M	4.1	0.7	-	0.6	2.3	6.9	4.7	5.5	3.5	1.7	6.2	5.9	5.7	4.7	3.6	5.4	6.4	3.4	
C82	Ne-Hodgkinov lim., folikularni Follicular non-Hodgkin's lymphoma	M	2.8	1.4	-	-	1.7	0.5	1.6	0.6	2.3	1.7	2.6	3.2	5.2	6.2	8.5	7.7	5.0	2.0	
C83	Ne-Hodgkinov lim., difuzni Diffuse non-Hodgkin's lymphoma	M	2.6	-	1.5	-	0.6	-	1.6	1.1	-	2.3	2.1	1.4	3.4	5.5	10.0	10.0	7.1	1.7	
C84	Periferni i kožni lim. T-ćelija Peripheral & cutaneous T-cell lymphomas	M	0.2	-	-	-	0.6	-	-	-	0.6	-	0.5	-	0.6	0.8	-	0.8	-	0.2	
C85	Ne-Hodgkinovi limfomi, drugi Other & unsp. types of non-Hodgkin's lymph	M	4.0	-	0.7	-	-	-	1.1	1.7	-	4.0	6.7	7.3	8.6	7.0	11.4	8.5	8.6	2.6	
C88	Zloćudne imunoprolifer. bolesti Malignant immunoproliferative diseases	M	0.1	-	-	-	-	-	-	-	-	-	-	-	1.1	-	0.6	-	0.7	-	0.1
C90	Mult. mijelom i zloć. tum. plaz. ćel. Multiple myeloma and malignant plasma cell n	M	3.0	-	-	-	-	-	-	-	-	3.4	1.6	5.0	5.7	8.6	12.1	9.2	6.4	1.8	
C91	Limfoidna leukemija Lymphoblastic, lymphoid leukaemia	M	5.2	3.5	2.2	1.9	1.2	1.1	1.1	-	2.3	2.1	3.6	13.2	8.6	13.5	15.4	21.4	3.6	1.2	
C92	Mijeloidna leukemija Myeloid leukaemia	M	3.8	-	-	-	-	1.6	1.1	2.2	4.1	1.7	4.1	5.0	5.7	9.4	7.1	12.3	10.0	2.5	
C93	Monocitna leukemija Monocytic leukaemia	M	0.3	-	-	-	-	0.5	-	-	-	-	-	-	-	0.8	0.7	2.3	0.7	0.2	
C94	Leukemije, druge Other leukaemias of specified cells	M	0.2	-	-	-	-	-	-	-	0.6	-	-	-	0.6	-	0.7	-	0.7	0.1	
C95	Leukemije, neoznačene Leukaemia, unspecified cell type	M	0.6	0.7	-	-	-	-	0.5	-	-	-	-	0.5	0.6	1.6	4.3	1.5	1.4	0.4	
C96	Dr. zloć. tum. hematop. sist. Other & unsp. mal. neo. of lym., haem. & tissue	M	0.0	-	-	-	-	-	-	-	-	-	-	-	-	-	-	-	-	-	0.0
C00-C96 (C44)	Sve lokalizacije, bez kože All sites but skin	M	428.2	18.0	15.2	9.6	16.9	38.9	42.6	72.1	84.4	143.8	291.2	529.6	791.8	1059.6	1351.5	1617.8	1476.1	251.0	
		Ž	373.9	19.0	6.1	6.8	17.1	27.0	51.5	88.8	184.1	288.9	423.7	557.4	694.5	728.6	903.8	879.3	836.9	216.7	

Tabela 20. Broj umrlih slučajeva od raka, prema primarnoj lokalizaciji (MKB-10), uzrastu i polu, centralna Srbija, 2005. godina

Table 20. Number of cancer deaths by primary site (ICD-10), age and sex, Central Serbia, 2005

MKB-10 (ICD-10) Šifra (Code)	Primarna lokalizacija Primary site	POL SEX	Ukupno (All)	U Z R A S T (A g e)																	%
				0-4	5-9	10-14	15-19	20-24	25-29	30-34	35-39	40-44	45-49	50-54	55-59	60-64	65-69	70-74	75+		
Ukupno (All)		M (Male)	7858	9	5	3	7	18	33	31	59	113	290	713	856	898	1273	1585	1965	100.0%	
		Ž (Female)	6142	3	3	3	9	8	19	44	58	147	286	536	598	569	850	1138	1871		
C00	Usna Lip	M	17	-	-	-	-	-	-	-	-	-	-	1	1	1	2	3	9	0.2%	
		Ž	8	-	-	-	-	-	-	-	-	-	-	-	-	1	1	1	5	0.1%	
C01	Jezik, koren Base of tongue	M	16	-	-	-	-	-	-	-	1	-	2	5	1	3	1	3	-	0.2%	
		Ž	4	-	-	-	-	1	-	-	-	-	-	-	1	1	-	-	1	0.1%	
C02	Jezik, drugi delovi Tongue, other & unspecified parts	M	21	-	-	-	-	-	-	-	-	-	1	3	3	5	4	2	3	0.3%	
		Ž	7	-	-	-	-	-	1	-	2	-	1	-	1	2	-	-	-	0.1%	
C03	Desni Gum	M	0	-	-	-	-	-	-	-	-	-	-	-	-	-	-	-	-	0.0%	
		Ž	0	-	-	-	-	-	-	-	-	-	-	-	-	-	-	-	-	0.0%	
C04	Pod usta Floor of mouth	M	21	-	-	-	-	-	-	-	1	-	3	5	1	2	6	3	-	0.3%	
		Ž	5	-	-	-	-	-	-	-	-	-	-	2	-	1	1	1	1	0.1%	
C05	Nepece Palate	M	6	-	-	-	-	-	-	-	-	-	2	1	2	1	-	-	-	0.1%	
		Ž	3	-	-	-	-	-	-	-	-	-	-	-	1	1	1	-	-	0.0%	
C06	Usta, drugi delovi Mouth, other & unspecified parts	M	8	-	-	-	-	-	-	-	-	-	1	-	1	2	2	1	1	0.1%	
		Ž	5	-	-	-	-	-	-	-	-	-	-	-	1	1	-	1	3	0.1%	
C07	Parotidna žlezda Parotid gland	M	11	-	-	-	-	-	-	-	-	-	-	2	3	2	1	3	3	0.1%	
		Ž	9	-	-	-	-	-	-	-	-	-	1	-	-	-	-	3	5	0.1%	
C08	Pljuvačna žlezda Other & unsp. major salivary gl.	M	3	-	-	-	-	-	-	-	-	-	1	-	-	-	1	-	1	0.0%	
		Ž	1	-	-	-	-	-	-	-	-	-	-	-	-	-	-	1	-	0.0%	
C09	Krajnik Tonsil	M	12	-	-	-	-	-	-	-	-	-	-	3	3	4	-	1	1	0.2%	
		Ž	4	-	-	-	-	-	-	-	-	-	2	-	1	-	-	1	-	0.1%	
C10	Orofarings Oropharynx	M	9	-	-	-	-	-	-	-	-	-	-	3	4	1	-	-	1	0.1%	
		Ž	5	-	-	-	-	-	-	-	-	-	1	1	1	-	-	1	1	0.1%	
C11	Nasofarings Nasopharynx	M	13	-	-	-	-	-	-	-	-	-	2	4	7	-	-	-	-	0.2%	
		Ž	7	-	-	-	-	-	-	-	-	-	1	-	1	2	1	2	1	0.1%	
C12	Piriformni sinus Pyriform sinus	M	0	-	-	-	-	-	-	-	-	-	-	-	-	-	-	-	-	0.0%	
		Ž	0	-	-	-	-	-	-	-	-	-	-	-	-	-	-	-	-	0.0%	
C13	Hipofarings Hypopharynx	M	57	-	-	-	-	-	-	-	-	4	9	14	7	8	8	7	7	0.7%	
		Ž	15	-	-	-	-	1	-	-	-	-	1	5	2	1	2	3	3	0.2%	
C14	Usne, usta, zdelo, drugi delovi Other and ill def. sites in the lip, oral cavity & pharynx	M	16	-	-	-	-	-	-	-	2	2	1	5	2	2	1	1	1	0.2%	
		Ž	2	-	-	-	-	-	1	-	-	-	-	1	-	-	-	-	-	0.0%	
C15	Jednjak Oesophagus	M	144	-	-	-	-	-	-	-	3	9	25	23	21	32	12	19	1.8%		
		Ž	28	-	-	-	-	-	-	-	-	1	5	3	2	4	6	7	0.5%		
C16	Želudac Stomach	M	559	-	-	-	-	3	-	3	8	17	43	47	71	84	133	150	7.1%		
		Ž	335	-	-	-	1	1	2	3	7	14	20	28	22	63	69	105	5.5%		
C17	Tanko crevo Small intestine	M	14	-	-	-	1	-	-	-	-	-	2	2	-	4	3	2	0.2%		
		Ž	16	-	-	-	-	-	-	1	1	-	2	1	1	4	6	6	0.3%		
C18	Debelo crevo Colon	M	458	-	-	-	-	-	-	5	4	11	23	33	54	77	99	152	5.8%		
		Ž	442	-	-	-	-	1	5	3	6	10	20	30	34	61	98	174	7.2%		
C19	Rektosigmoidni prelaz Rectosigmoid junction	M	32	-	-	-	-	-	-	1	1	3	1	2	5	3	4	12	0.4%		
		Ž	30	-	-	-	-	-	-	-	-	-	2	-	2	7	5	13	0.5%		
C20	Rektum Rectum	M	467	-	-	-	-	-	2	1	5	10	27	29	58	75	111	149	5.9%		
		Ž	287	-	-	-	-	3	1	1	3	8	17	21	19	41	62	111	4.7%		
C21	Anus i analni kanal Anus & anal canal	M	9	-	-	-	-	-	-	1	-	-	-	1	2	-	-	2	3	0.1%	
		Ž	7	-	-	-	-	-	-	-	-	-	-	1	-	-	2	2	0.1%		
C22	Jetra, žučni kanali Liver & intrahepatic bile ducts	M	287	1	-	-	-	2	-	6	2	9	16	28	31	42	67	83	3.7%		
		Ž	211	-	-	-	-	-	-	1	2	6	7	14	34	29	45	73	3.4%		
C23	Žučna kesica Gallbladder	M	35	-	-	-	-	-	-	-	-	1	3	1	3	2	13	12	0.4%		
		Ž	101	-	-	-	-	-	-	2	2	5	7	7	11	25	42	1.6%			
C24	Žučni kanali, drugi delovi Biliary tract, other & unsp. parts	M	34	-	-	-	-	-	-	-	-	1	3	2	4	5	8	11	0.4%		
		Ž	29	-	-	-	-	-	-	-	-	1	3	2	3	7	11	5	0.5%		
C25	Pankreas Pancreas	M	389	-	-	-	1	-	1	-	4	9	40	53	51	68	68	94	5.0%		
		Ž	348	-	-	-	-	-	3	2	5	19	24	27	56	79	133	5.7%			
C26	Org. za var., ned. odrež. lok. Other & ill-defined digestive organs	M	11	-	-	-	-	-	-	-	-	-	3	1	1	2	1	3	0.1%		
		Ž	14	-	-	-	-	-	-	-	-	-	1	5	1	2	4	0.2%			
C30	Nosna šupljina i srednje uvo Nasal cavity & middle ear	M	3	-	-	-	-	-	-	-	-	-	-	-	-	1	2	-	0.0%		
		Ž	6	-	-	-	-	-	-	-	-	-	-	-	-	-	5	-	0.1%		
C31	Nosni sinusi Accessory sinuses	M	5	-	-	-	-	-	-	-	-	-	2	2	-	-	-	1	0.1%		
		Ž	10	-	-	-	-	-	-	-	-	-	1	2	-	-	4	3	0.2%		
C32	Larings Larynx	M	271	-	-	-	-	-	-	1	3	9	28	48	27	49	60	46	3.4%		
		Ž	33	-	-	-	-	-	-	-	4	3	4	3	4	4	11	0.5%			
C33	Tracheja Trachea	M	13	-	-	-	-	-	-	-	-	-	2	3	5	3	-	-	0.2%		
		Ž	5	-	-	-	-	-	-	-	-	-	2	-	1	2	-	-	0.1%		
C34	Bronh i pluća Bronchus & lung	M	2364	-	-	-	-	1	3	10	34	113	286	325	311	405	466	410	30.1%		
		Ž	705	-	-	-	-	-	2	7	17	36	84	98	65	89	138	169	11.5%		
C37	Timus Thymus	M	0	-	-	-	-	-	-	-	-	-	-	-	-	-	-	-	0.0%		
		Ž	0	-	-	-	-	-	-	-	-	-	-	-	-	-	-	-	0.0%		
C38	Srce, mediastinum, pleura Heart, mediastinum & pleura	M	43	-	-	-	-	1	1	-	2	1	9	6	5	8	6	4	0.5%		
		Ž	17	-	-	-	-	-	-	-	2	2	1	-	1	3	8	0.3%			
C39	Toraks, druge lokalizacije Other & ill-def. in the res. sys.	M	0	-	-	-	-	-	-	-	-	-	-	-	-	-	-	-	0.0%		
		Ž	1	-	-	-	-	-	-	-	-	-	-	-	-	1	-	-	0.0%		
C40	Kosti i zglobovi, hrskavice udova Bone & articular cartilage of limbs	M	14	1	-	-	-	-	1	1	1	-	1	1	1	4	1	1	0.2%		
		Ž	9	-	-	3	-	2	-	-	-	-	-	-	2	1	1	1	0.1%		
C41	Kosti i zglobovi, hrskavice, dr. lok. Bone & articular cartilage of other	M	30	-	-	1	1	1	1	1	3	-	5	5	3	3	3	3	0.4%		
		Ž	19	-	-	-	1	-	-	-	-	3	2	1	2	1	4	5	0.3%		
C43	Koža, maligni melanom Malignant melanoma of skin	M	83	-	-	-	-	1	1	4	2	8	11	11	8	4	18	15	1.1%		
		Ž	73	-	-	-	-	-	5	4	5	8	7	7	3	8	8	18	1.2%		
C44	Koža, drugi mal. tumori Skin, other malignomas	M	59	-	-	-	-	-	-	1	-	-	2	9	4	5	8	30	0.8%		
		Ž	59	-	-	-	-	-	-	1	1										

Tabela 20.1 Broj umrlih slučajeva od raka, prema primarnoj lokalizaciji (MKB-10), uzrastu i polu, centralna Srbija, 2005. godina (nastavak)

Table 20.1 Number of cancer deaths by primary site (ICD-10), age and sex, Central Serbia, 2005 (continued)

MKB-10 (ICD-10) Šifra (Code)	Primarna lokalizacija Primary site	POL SEX	Ukupno (All)	U Z R A S T (A g e)																% %
				0-4	5-9	10-14	15-19	20-24	25-29	30-34	35-39	40-44	45-49	50-54	55-59	60-64	65-69	70-74	75+	
Ukupno (All)		M (Male)	7858	9	5	3	7	18	33	31	59	113	290	713	856	898	1273	1585	1965	100.0%
		Ž (Female)	6142	3	3	3	9	8	19	44	58	147	286	536	598	569	850	1138	1871	
C51	Vulva Vulva	Ž	33	-	-	-	-	-	-	-	1	-	2	1	1	3	5	5	15	0.5%
C52	Vagina Vagina	Ž	10	-	-	-	-	-	-	-	-	-	-	1	1	-	1	2	3	0.2%
C53	Grič materice Cervix uteri	Ž	370	-	-	-	-	-	2	11	12	23	25	36	42	39	49	53	78	6.0%
C54	Materica, telo Corpus uteri	Ž	98	-	-	-	-	-	-	1	-	1	5	8	5	7	15	16	40	1.6%
C55	Materica, neoznačeni deo Uterus, unspecified part	Ž	133	-	-	-	-	-	-	2	3	6	9	13	11	21	25	43		2.2%
C56	Jajnik Ovary	Ž	256	-	-	-	-	-	1	-	1	8	14	25	24	30	42	55	56	4.2%
C57	Ženski gen.org., dr. neoz. lok. Other & unspc.parts of fem. gen.org.	Ž	11	-	-	-	-	-	-	-	-	1	-	-	3	1	1	5	-	0.2%
C58	Placenta Placenta	Ž	0	-	-	-	-	-	-	-	-	-	-	-	-	-	-	-	-	0.0%
C60	Penis Penis	M	9	-	-	-	-	-	-	-	-	-	-	-	-	1	-	4	2	0.1%
C61	Prostata Prostate	M	589	-	-	-	-	-	-	-	1	1	2	5	15	22	77	146	320	7.5%
C62	Testis Testis	M	24	-	-	-	-	2	6	2	1	4	1	2	-	-	2	3	1	0.3%
C63	Muški gen. org., dr. neoz. org. Other & unspc. male genital organs	M	0	-	-	-	-	-	-	-	-	-	-	-	-	-	-	-	-	0.0%
C64	Bubreg Kidney, except renal pelvis	M	147	-	1	-	-	1	-	2	1	1	4	9	14	21	27	34	32	1.9%
C65	Bubrežna karlica Renal pelvis	M	99	1	1	-	-	-	-	1	-	2	1	4	5	6	9	32	37	1.6%
C66	Ureter Ureter	M	9	-	-	-	-	-	-	-	-	-	-	-	-	2	2	4	1	0.1%
C67	Mokraćna bešika Bladder	M	292	-	-	-	-	-	-	-	-	-	-	-	1	3	4	6	3	0.2%
C68	Urinarni organi, dr. neoz. org. Other & unspecified urinary organs	M	88	-	-	-	-	-	-	-	1	1	2	4	5	3	12	16	44	1.4%
C69	Oko, pripojni oka Eye and adnexa	M	3	-	-	-	-	-	-	-	-	-	-	-	-	-	-	-	-	0.0%
C70	Moždance Meninges	M	4	-	-	-	-	-	-	-	-	-	-	-	-	-	-	1	3	0.1%
C71	Mozak Brain	M	8	-	-	-	-	-	-	-	-	2	-	-	-	1	2	2	1	0.1%
C72	Centralni ner. sis., dr. delovi Spinal cord, cran. nerv. & oth. parts of CNS	M	16	-	-	-	-	-	1	-	-	-	-	-	4	1	1	2	6	0.3%
C73	Mozak Brain	M	263	4	2	1	3	1	6	3	6	11	15	26	41	30	46	44	24	3.3%
C74	Štitna žlezda Thyroid gland	M	183	1	2	-	3	-	2	1	-	4	10	22	34	25	31	15	33	3.0%
C75	Centralni ner. sis., dr. delovi Spinal cord, cran. nerv. & oth. parts of CNS	M	6	-	-	-	-	-	-	-	-	-	-	2	1	-	1	2	1	0.1%
C76	Štitna žlezda Thyroid gland	M	10	-	-	-	-	-	-	-	-	1	-	2	-	1	4	1	1	0.2%
C77	Sjemenik Testis	M	12	-	-	-	-	-	-	-	-	-	-	-	2	-	3	3	4	0.2%
C78	Nadbubrežna žlezda Adrenal gland	M	27	-	-	-	-	-	-	-	1	1	1	3	1	3	4	5	9	0.4%
C79	Nadbubrežna žlezda Adrenal gland	M	13	-	-	-	-	-	-	1	-	-	-	1	3	4	1	1	2	0.2%
C80	Endokrine žlezde, druge Other endocrine glands & related structures	M	10	-	-	-	-	-	1	-	-	-	2	-	-	2	4	3	-	0.2%
C81	Ostale lokalizacije Other & ill defined sites	M	8	-	-	-	-	-	-	-	-	-	1	3	1	-	-	2	1	0.1%
C82	Ostale lokalizacije Other & ill defined sites	M	175	1	-	-	-	1	-	1	-	3	4	11	9	13	23	33	78	2.8%
C83	Sekundarne lok., bez ozn. lok. Unspc mal. neo. of lymph nod. & without of spec. of site	M	345	-	1	-	-	1	-	2	6	10	35	38	29	63	69	91	4.4%	
C84	Hodgkinova bolest Hodgkin's disease	M	262	-	-	-	-	-	-	1	-	4	11	16	27	29	44	40	90	4.3%
C85	Ne-Hodgkinov lim., folikularni Follicular non-Hodgkin's lymphoma	M	29	-	-	-	-	2	3	3	2	1	4	2	1	2	1	5	3	0.4%
C86	Ne-Hodgkinov lim., difuzni Diffuse non-Hodgkin's lymphoma	M	23	-	-	-	-	1	2	-	-	2	2	3	2	-	8	3	0.4%	
C87	Ne-Hodgkinov lim., difuzni Diffuse non-Hodgkin's lymphoma	M	8	-	-	-	-	-	-	-	-	1	1	-	1	2	1	1	0.1%	
C88	Periferni i kožni lim. T-ćelija Peripheral & cutaneous T-cell lymphomas	M	4	-	-	-	-	-	-	-	-	-	-	-	-	-	-	-	-	0.1%
C89	Ne-Hodgkinovi limfomi, drugi Other & unspc. types of non-Hodgkin's lymph	M	21	-	-	-	-	1	-	3	-	-	2	4	-	4	1	2	2	0.3%
C90	Zloćudne imunoprolifer. bolesti Malignant immunoproliferative diseases	M	15	-	-	-	-	-	-	1	-	1	1	1	2	3	2	2	2	0.2%
C91	Mult. mijelom i zloć. tum. plaz. ćel. Multiple myeloma and malignant plasma cell n	M	0	-	-	-	-	-	-	-	-	-	-	-	-	-	-	-	-	0.0%
C92	Limfoblastič. limfoid leukaemija Lymphoblastic, lymphoid leukaemia	M	1	-	-	-	-	-	-	-	-	-	-	-	-	1	-	-	-	0.0%
C93	Ne-Hodgkinovi limfomi, drugi Other & unspc. types of non-Hodgkin's lymph	M	73	1	-	-	-	1	1	1	3	4	6	3	6	8	14	9	16	0.9%
C94	Zloćudne imunoprolifer. bolesti Malignant immunoproliferative diseases	M	69	-	-	-	-	-	-	1	2	1	3	5	7	9	8	13	20	1.1%
C95	Mult. mijelom i zloć. tum. plaz. ćel. Multiple myeloma and malignant plasma cell n	M	2	-	-	-	-	-	-	-	-	-	-	-	-	-	-	-	-	0.0%
C96	Malignant immunoproliferative diseases	M	3	-	-	-	-	-	-	-	-	-	-	-	-	-	-	1	1	0.0%
C97	Mult. mijelom i zloć. tum. plaz. ćel. Multiple myeloma and malignant plasma cell n	M	55	-	-	-	-	-	-	-	-	-	2	5	4	5	15	12	12	0.7%
C98	Limfoblastič. limfoid leukaemija Lymphoblastic, lymphoid leukaemia	M	57	-	-	-	-	-	-	-	-	-	2	4	6	3	10	13	19	0.9%
C99	Mijeloidna leukaemija Myeloid leukaemia	M	92	1	1	1	1	2	1	3	1	5	1	7	6	5	9	23	25	1.2%
C100	Monocitna leukaemija Monocytic leukaemia	M	55	-	-	-	-	1	-	-	-	2	2	2	2	6	4	10	25	0.9%
C101	Mijeloidna leukaemija Myeloid leukaemia	M	90	-	-	-	-	3	3	2	4	1	8	13	11	11	13	10	11	1.1%
C102	Monocitna leukaemija Monocytic leukaemia	M	53	-	-	-	2	1	-	1	2	2	6	14	4	5	5	6	9	0.9%
C103	Leukemije, druge Other leukaemias of specified cells	M	3	-	-	-	-	-	-	-	-	-	-	-	-	3	-	-	-	0.0%
C104	Leukemije, neoznačene Leukaemia, unspecified cell type	M	3	-	-	-	-	-	-	-	-	-	-	-	-	-	-	-	-	0.0%
C105	Dr. zloć. tum. hematop. sist. Other & unsp. mal. neo. of lym., haem. & tissue	M	1	-	-	-	-	-	-	-	-	-	1	-	-	-	-	-	-	0.0%
C106	Sve lokalizacije, bez kože All sites but skin	M	2	-	-	-	-	-	-	-	-	-	-	-	-	1	-	-	-	0.0%
C00-C96 (C44)	Sve lokalizacije, bez kože All sites but skin	M	7799	9	5	3	7	18	33	31	59	112	290	711	847	894	1268	1577	1935	99.2%
		Ž	6083	2	3	3	9	8	19	44	58	146	285	534	597	568	846	1129	1830	99.0%



Tabela 21. Mortalitet od raka na 100.000 stanovnika prema primarnoj lokalizaciji (MKB-10), uzrastu i polu, centralna Srbija, 2005. godina

Table 21. Cancer mortality rates per 100,000 population by primary site (ICD-10), age and sex, Central Serbia, 2005

MKB-10 (ICD-10) Šifra (Code) Ukupno (All)	Primarna lokalizacija Primary site	POL SEX M (Male) Ž (Female)	Sirovi mort. CR 220.4	U Z R A S T (A g e)																	Stand. mort. ASR 163.2	
				0-4	5-9	10-14	15-19	20-24	25-29	30-34	35-39	40-44	45-49	50-54	55-59	60-64	65-69	70-74	75+			
				297.6	6.2	3.6	1.9	4.1	9.6	17.4	17.2	34.6	64.0	150.3	323.6	491.1	700.7	905.0	1219.9	1403.9		
C00	Usna Lip	M Ž	0.6 0.3	-	-	-	-	-	-	-	-	-	-	-	0.5	0.6	0.8	1.4	2.3	6.4	0.3	
C01	Jezik, koren Base of tongue	M Ž	0.6 0.1	-	-	-	-	-	-	-	0.6	-	1.0	2.3	0.6	2.3	0.7	2.3	-	-	0.4	
C02	Jezik, drugi delovi Tongue, other & unspecified parts	M Ž	0.8 0.3	-	-	-	-	-	0.5	-	-	1.1	-	0.5	1.4	1.7	3.9	2.8	1.5	2.1	0.5	
C03	Desni Gum	M Ž	0.0 0.0	-	-	-	-	-	-	-	-	-	-	-	-	-	-	-	-	-	0.0	
C04	Pod usta Floor of mouth	M Ž	0.8 0.2	-	-	-	-	-	-	-	0.6	-	1.6	2.3	0.6	1.6	4.3	2.3	-	-	0.5	
C05	Nepece Palate	M Ž	0.2 0.1	-	-	-	-	-	-	-	-	-	1.0	0.5	1.1	0.8	-	-	-	-	0.2	
C06	Usta, drugi delovi Mouth, other & unspecified parts	M Ž	0.3 0.2	-	-	-	-	-	-	-	-	-	0.5	-	0.6	1.6	1.4	0.8	0.7	0.2		
C07	Parotidna žlezda Parotid gland	M Ž	0.4 0.3	-	-	-	-	-	-	-	-	-	-	-	1.1	2.3	1.4	0.8	2.1	0.2		
C08	Pijuvna žlezda Other & unspec. major salivary gl.	M Ž	0.1 0.0	-	-	-	-	-	-	-	-	-	0.5	-	-	-	0.7	-	-	-	0.1	
C09	Krajnik Tonsil	M Ž	0.5 0.1	-	-	-	-	-	-	-	-	-	-	-	1.4	1.7	3.1	-	0.8	0.7	0.3	
C10	Orofaringis Oropharynx	M Ž	0.3 0.2	-	-	-	-	-	-	-	-	-	-	-	1.4	2.3	0.8	-	-	0.7	0.2	
C11	Nasofaringis Nasopharynx	M Ž	0.5 0.3	-	-	-	-	-	-	-	-	-	1.0	1.8	4.0	-	-	0.6	0.5	0.1		
C12	Piriformni sinus Pyriform sinus	M Ž	0.0 0.0	-	-	-	-	-	-	-	-	-	-	-	-	-	-	-	-	-	0.0	
C13	Hipofaringis Hypopharynx	M Ž	2.2 0.5	-	-	-	-	-	0.5	-	-	-	-	-	2.1	4.1	8.0	5.5	5.7	6.2	5.0	1.3
C14	Usne, usta, zrdelo, drugi delovi Other and ill-def. sites in the lip, oral cavity & pharynx	M Ž	0.6 0.1	-	-	-	-	-	-	0.6	-	-	1.1	1.0	0.5	2.9	1.6	1.4	0.6	1.2	1.4	0.3
C15	Jednjak Oesophagus	M Ž	5.5 1.0	-	-	-	-	-	-	-	-	1.7	4.7	11.3	13.2	16.4	22.7	9.2	13.6	3.3		
C16	Želudac Stomach	M Ž	21.2 12.0	-	-	-	-	1.6	-	1.1	1.7	3.8	7.0	8.8	14.9	15.2	37.8	41.9	49.5	5.5		
C17	Tanko crevo Small intestine	M Ž	0.5 0.6	-	-	-	0.5	-	-	-	-	0.6	0.5	-	1.1	0.7	0.6	2.4	2.8	0.3		
C18	Debelo crevo Colon	M Ž	17.3 15.9	-	-	-	-	-	0.5	2.8	1.7	3.3	5.0	8.8	16.0	23.5	36.6	59.5	82.0	6.8		
C19	Rektosigmoidni prelaz Rectosigmoid junction	M Ž	1.2 1.1	-	-	-	-	-	-	0.6	0.6	1.6	0.5	1.1	3.9	2.1	3.1	8.6	0.7	0.1		
C20	Rektum Rectum	M Ž	17.7 10.3	-	-	-	-	-	-	1.1	0.6	2.8	5.2	12.3	16.6	45.3	53.3	85.4	106.5	9.4		
C21	Anus i analni kanal Anus & anal canal	M Ž	0.3 0.3	-	-	-	-	-	-	1.6	0.6	0.6	1.6	4.0	7.5	11.2	13.1	24.6	37.6	52.3	4.4	
C22	Jetra, žučni kanali Liver & intrahepatic bile ducts	M Ž	10.9 7.6	0.7	-	-	-	-	1.1	-	3.5	1.1	4.7	7.3	16.1	24.2	29.9	51.6	59.3	5.8		
C23	Žučna kesica Gallbladder	M Ž	1.3 3.6	-	-	-	-	-	-	-	0.6	1.1	3.0	3.1	7.5	23.5	17.4	27.3	34.4	3.4		
C24	Žučni kanali, drugi delovi Biliary tract, other & unspec. parts	M Ž	1.3 1.0	-	-	-	-	-	-	-	-	-	0.5	1.4	1.1	3.1	3.6	6.2	7.9	0.7		
C25	Pankreas Pancreas	M Ž	14.7 12.5	-	-	-	0.6	-	0.6	-	2.3	4.7	18.2	30.4	39.8	48.3	52.3	67.2	81.1	5.2		
C26	Org. za var., ned. odrež. lok. Other & ill-defined digestive organs	M Ž	0.4 0.5	-	-	-	-	-	-	-	1.7	1.1	2.5	8.4	12.8	18.7	33.6	47.9	62.7	5.2		
C30	Nosna šupljina i srednje uvo Nasal cavity & middle ear	M Ž	0.1 0.2	-	-	-	-	-	-	-	-	-	-	-	-	-	0.7	1.5	-	-	0.1	
C31	Nosni sinusi Accessory sinuses	M Ž	0.2 0.4	-	-	-	-	-	-	-	-	-	-	-	0.9	1.1	-	-	-	0.7	0.1	
C32	Larings Larynx	M Ž	10.3 1.2	-	-	-	-	-	-	-	0.6	1.7	4.7	12.7	27.5	21.1	34.8	46.2	32.9	5.6		
C33	Tracheja Trachea	M Ž	0.5 0.2	-	-	-	-	-	-	-	-	-	-	0.9	1.7	3.9	2.1	-	-	0.3		
C34	Bronh i pluća Bronchus & lung	M Ž	89.5 25.3	-	-	-	-	-	0.5	1.7	5.9	19.3	58.6	129.8	186.5	242.7	287.9	358.7	292.9	50.5		
C37	Timus Thymus	M Ž	0.0 0.0	-	-	-	-	-	-	-	-	-	-	-	-	-	-	-	-	-	0.0	
C38	Srce, mediastinum, pleura Heart, mediastinum & pleura	M Ž	1.6 0.6	-	-	-	-	-	0.5	0.6	-	-	1.1	0.5	4.1	3.4	3.9	5.7	4.6	2.9	1.0	
C39	Toraks, druge lokalizacije Other & ill-def. in the res. sys.	M Ž	0.0 0.0	-	-	-	-	-	-	-	-	-	-	-	1.0	0.9	0.5	-	0.6	1.8	0.3	
C40	Kosti i zglobovi Bone & articular cartilage of limbs	M Ž	0.5 0.3	0.7	-	-	-	-	0.5	0.6	0.6	-	0.5	0.5	0.6	0.8	2.8	0.8	0.7	0.4		
C41	Kosti i zglobovi, hrskavica, dr. lok. Bone & articular cartilage of other	M Ž	1.1 0.7	-	-	0.6	0.6	0.5	0.5	0.6	-	-	1.7	-	2.3	2.9	2.3	2.1	2.3	2.1	0.8	
C43	Koža, maligni melanom Malignant melanoma of skin	M Ž	3.1 2.6	-	-	-	-	-	0.5	0.6	2.3	1.1	4.1	5.0	6.3	6.2	2.8	13.9	19.7	1.9		
C44	Koža, drugi mal. tumori Skin, other malignomas	M Ž	2.2 2.1	-	-	-	-	-	-	-	0.6	-	0.5	0.5	0.9	5.2	3.1	3.6	6.2	21.4	1.1	
C45	Mesotelijom Mesothelioma	M Ž	0.6 0.2	-	-	-	-	-	-	-	-	-	-	-	0.9	1.1	4.7	1.4	0.8	2.9	0.4	
C46	Kaposijev sarkom Kaposi's sarcoma	M Ž	0.0 0.0	-	-	-	-	-	-	-	-	-	-	-	-	-	-	-	-	-	0.0	
C47	Perifereni nervi i auton. ner. sis. Peripheral nerves & auton. nerv. sys.	M Ž	0.0 0.1	-	-	-	-	-	-	-	-	-	-	-	-	0.6	-	-	-	-	0.0	
C48	Peritoneum i retroperitoneum Retroperitoneum & peritoneum	M Ž	1.1 1.0	-	-	-	0.6	-	0.5	0.5	-	-	-	-	0.5	1.1	3.1	4.3	4.6	5.7	0.6	
C49	Vezivna i meka tkiva, drugi Other connective and soft tissue	M Ž	0.8 0.4	-	-	-	-	-	-	-	0.6	0.6	1.6	1.4	1.1	1.6	0.7	0.8	4.3	0.5		
C50	Dojka Breast	M Ž	1.0 40.0	-	-	-	-	0.6	2.1	2.2	5.7	22.5	39.6	64.9	72.1	83.0	84.6	98.9	127.3	20.9		

Tabela 21.1 Mortalitet od raka na 100.000 stanovnika prema primarnoj lokalizaciji (MKB-10), uzrastu i polu, centralna Srbija, 2005. godina (nastavak)

Table 21.1 Cancer mortality rates per 100,000 population by primary site (ICD-10), age and sex, Central Serbia, 2005 (continued)

MKB-10 (ICD-10) Šifra (Code)	Primarna lokalizacija Primary site	POL. SEX	Sirovi mort. CR	U Z R A S T (A g e)																Stand. mort. ASR	
				0-4	5-9	10-14	15-19	20-24	25-29	30-34	35-39	40-44	45-49	50-54	55-59	60-64	65-69	70-74	75+		
<b>Ukupno (All)</b>		M (Male)	297.6	6.2	3.6	1.9	4.1	9.6	17.4	17.2	34.6	64.0	150.3	323.6	491.1	700.7	905.0	1219.9	1403.9	163.2	
		Ž (Female)	220.4	2.2	2.3	2.0	5.5	4.4	10.2	24.3	33.2	80.6	143.4	236.6	319.2	393.3	509.8	690.6	882.2	106.3	
C51	Vulva	Ž	1.2	-	-	-	-	-	-	-	0.6	-	1.0	0.4	0.5	2.1	3.0	3.0	7.1	0.5	
C52	Vulva Vagina	Ž	0.4	-	-	-	-	-	-	-	-	-	0.5	0.4	-	0.7	1.2	1.2	1.4	0.2	
C53	Grič materice Cervix uteri	Ž	13.3	-	-	-	-	-	1.1	6.1	6.9	12.6	12.5	15.9	22.4	27.0	29.4	32.2	36.8	7.4	
C54	Materica, telo Corpus uteri	Ž	3.5	-	-	-	-	-	-	0.6	-	0.5	2.5	3.5	2.7	4.8	9.0	9.7	18.9	1.5	
C55	Materica, neoznačeni deo Uterus, unspecified part	Ž	4.8	-	-	-	-	-	-	-	1.1	1.6	3.0	4.0	6.9	7.6	12.6	15.2	20.3	2.2	
C56	Jajnik Ovary	Ž	9.2	-	-	-	-	-	0.5	-	0.6	4.4	7.0	11.0	12.8	20.7	25.2	33.4	26.4	4.6	
C57	Ženski gen.org., dr. neoz. lok. Other & unsp. parts of fem. gen.org.	Ž	0.4	-	-	-	-	-	-	-	-	0.5	-	-	1.6	0.7	0.6	3.0	-	0.2	
C58	Placenta	Ž	0.0	-	-	-	-	-	-	-	-	-	-	-	-	-	-	-	-	0.0	
C60	Penis	M	0.3	-	-	-	-	-	-	-	-	-	-	-	-	0.6	-	2.8	1.5	1.4	0.2
C61	Prostata Prostate	M	22.3	-	-	-	-	-	-	-	0.6	0.6	1.0	2.3	8.6	17.2	54.7	112.4	228.6	9.7	
C62	Testis	M	0.9	-	-	-	-	1.1	3.2	1.1	0.6	2.3	0.5	0.9	-	-	1.4	2.3	0.7	0.8	
C63	Muški gen. org., dr. neoz. org. Other & unsp. male genital organs	M	0.0	-	-	-	-	-	-	-	-	-	-	-	-	-	-	-	-	0.0	
C64	Bubrež Kidney, except renal pelvis	M	5.6	-	0.7	-	-	0.5	-	1.1	0.6	0.6	2.1	4.1	8.0	16.4	19.2	26.2	22.9	3.1	
C65	Bubrežna karlica Renal pelvis	Ž	3.6	0.7	0.8	-	-	-	-	0.6	-	1.1	0.5	1.8	2.7	4.1	5.4	19.4	17.4	1.6	
C66	Ureter	M	0.3	-	-	-	-	-	-	-	-	-	-	-	-	0.6	2.3	-	1.5	2.1	0.2
C67	Mokraćna bešika Bladder	M	11.1	-	-	-	-	-	-	-	0.6	0.6	2.6	5.0	9.2	17.9	33.4	49.3	88.6	5.3	
C68	Urinarni organi, dr. neoz. org. Other & unspecified urinary organs	M	0.1	-	-	-	-	-	-	-	0.6	0.5	1.0	1.8	2.7	2.1	7.2	9.7	20.7	1.2	
C69	Oko, pripoji oka Eye and adnexa	M	0.2	-	-	-	-	-	-	-	-	-	-	-	-	-	-	-	0.8	2.1	0.1
C70	Moždance Meninges	M	0.2	-	-	-	-	-	-	-	-	-	-	-	-	0.7	1.2	1.2	0.5	0.2	
C71	Mozak Brain	M	10.0	2.8	1.5	0.6	1.7	0.5	3.2	1.7	3.5	6.2	7.8	11.8	23.5	23.4	32.7	33.9	17.1	6.6	
C72	Centralni ner. sis., dr. delovi Spinal cord, cran. nerv. & oth. parts of CNS	M	0.2	-	-	-	-	-	-	-	-	-	-	-	0.9	-	0.8	-	1.5	0.7	0.1
C73	Štitasta žlezda Thyroid gland	M	0.5	-	-	-	-	-	-	-	-	-	-	-	1.1	-	2.1	2.3	2.9	0.2	
C74	Nadbubrežna žlezda Adrenal gland	M	0.5	-	-	-	-	-	0.6	-	-	-	0.5	1.3	0.5	2.1	2.4	3.0	4.2	0.5	
C75	Endokrine žlezde, druge Other endocrine glands & related structures	M	0.5	-	-	-	-	0.5	-	-	-	-	1.0	-	-	1.6	2.8	2.3	-	0.3	
C76	Ostale lokalizacije Other & ill defined sites	M	3.2	0.7	-	-	-	0.5	0.5	0.6	-	-	1.0	3.6	2.9	5.5	10.7	14.6	17.1	1.7	
C77-C80	Sekundarne lok., bez ozn. lok. Unsp. mal. neo. of lymph nod. & without of spec. of site	M	13.1	-	0.7	-	-	0.5	-	-	1.2	3.4	5.2	15.9	21.8	22.6	44.8	53.1	65.0	7.0	
C81	Hodgkinova bolest Hodgkin's disease	M	1.1	-	-	-	-	1.1	1.6	1.7	1.2	0.6	2.1	0.9	0.6	1.6	0.7	3.8	2.1	0.8	
C82	Ne-Hodgkinov lim., folikularni Follicular non-Hodgkin's lymphoma	M	0.3	-	-	-	-	-	-	-	-	0.6	0.5	-	0.6	0.8	1.4	0.8	0.7	0.2	
C83	Ne-Hodgkinov lim., difuzni Diffuse non-Hodgkin's lymphoma	M	0.8	-	-	-	-	0.5	-	1.7	-	-	1.0	1.8	-	3.1	2.8	0.8	1.4	0.5	
C84	Periferni i kožni lim. T-ćelija Peripheral & cutaneous T-cell lymphomas	M	0.0	-	-	-	-	-	-	-	-	-	-	-	-	-	-	-	-	0.0	
C85	Ne-Hodgkinovi limfomi, drugi Other & unsp. types of non-Hodgkin's lymph	M	2.8	0.7	-	-	-	0.5	0.5	0.6	1.8	2.3	3.1	1.4	3.4	6.2	10.0	6.9	11.4	1.8	
C88	Zloćudne imunoprolifer. bolesti Malignant immunoproliferative diseases	M	0.1	-	-	-	-	-	-	-	-	-	-	-	0.6	-	0.7	-	-	0.0	
C90	Mult. mijelom i zloć. tum. plaz. ćel. Multiple myel. and malig. plasma cell neoplasm	M	2.1	-	-	-	-	-	-	-	-	-	1.0	2.3	2.3	3.9	10.7	9.2	8.6	1.1	
C91	Limfoidna leukemija Lymphoblastic, lymphoid leukaemia	M	3.5	0.7	0.7	0.6	0.6	1.1	0.5	1.7	0.6	2.8	0.5	3.2	3.4	3.9	6.4	17.7	17.9	2.1	
C92	Mijeloidna leukemija Myeloid leukaemia	M	3.4	-	-	-	-	1.6	1.6	1.1	2.3	0.6	4.1	5.9	6.3	8.6	9.2	7.7	7.9	2.2	
C93	Monocitna leukemija Monocytic leukaemia	M	0.1	-	-	-	-	-	-	-	-	-	-	-	-	3.5	3.0	3.0	2.8	1.2	
C94	Leukemije, druge Other leukaemias of specified cells	M	0.1	-	-	-	-	-	-	-	-	-	-	-	-	0.7	0.8	0.7	0.1	0.1	
C95	Leukemije, neoznačene Leukaemia, unspecified cell type	M	1.0	-	-	-	0.6	-	-	-	-	-	0.5	1.8	0.6	0.8	3.6	4.6	5.7	0.5	
C96	Dr. zloć. tum. hematop. sist. Other & unsp. mal. neo. of lym., haem. & tissue	M	0.0	-	-	-	-	-	-	-	-	0.6	-	-	-	-	-	-	-	0.0	
C00-C96 (C44)	Sve lokalizacije, bez kože All sites but skin	M	295.3	6.2	3.6	1.9	4.1	9.6	17.4	17.2	34.6	63.4	150.3	322.7	486.0	697.5	901.5	1213.8	1382.5	162.2	
		Ž	218.3	2.2	2.3	2.0	5.5	4.4	10.2	24.3	33.2	80.0	142.9	235.7	318.7	392.7	507.4	685.1	863.3	105.6	

**Tabela 22. Ukupan broj novoobolelih, broj i procenat histološki i citološki verifikovanih slučajeva raka prema primarnoj lokalizaciji i polu, centralna Srbija, 2005. godina**

Table 22. Total number of new cancer cases, number and percentage of histologically and cytologically confirmed cancer cases by primary site and sex, Central Serbia 2005

MKB-10 (ICD-10) Šifra (Code)	Primarna lokalizacija Primary site	POL (SEX) M (Male) Z(Female)	Ukupan broj novoobolelih		Broj histo. / cito. verifikovanih		%
			All new cases		Number of cases histo./ cyto. confirmed		
			12679	11690	11083	10174	
C00	Usna Lip	M Ž	92 43		90 30		97.8% 69.8%
C01	Jezik, koren Base of tongue	M Ž	35 12		22 9		62.9% 75.0%
C02	Jezik, drugi delovi Tongue, other & unspecified parts	M Ž	33 7		22 7		66.7% 100.0%
C03	Desni Gum	M Ž	7 12		3 1		42.9% 8.3%
C04	Pod usta Floor of mouth	M Ž	41 6		30 4		73.2% 66.7%
C05	Nepece Palate	M Ž	17 10		14 6		82.4% 60.0%
C06	Usta, drugi delovi Mouth, other & unspecified parts	M Ž	14 39		10 20		71.4% 51.3%
C07	Parotidna žlezda Parotid gland	M Ž	33 23		21 11		63.6% 47.8%
C08	Plijuvačna žlezda Other & unspec. major salivary gl.	M Ž	13 8		6 2		46.2% 25.0%
C09	Krajnik Tonsil	M Ž	29 8		21 7		72.4% 87.5%
C10	Orofarings Oropharynx	M Ž	11 4		10 2		90.9% 50.0%
C11	Nasofarings Nasopharynx	M Ž	26 12		25 12		96.2% 100.0%
C12	Piriformni sinus Pyriform sinus	M Ž	2 0		2 0		100.0% 0.0%
C13	Hipofarings Hypopharynx	M Ž	50 9		49 8		98.0% 88.9%
C14	Usne, usta, ždrelo, drugi delovi Other & ill def. sites in the lip oral cavity & pharynx	M Ž	7 1		6 1		85.7% 100.0%
C15	Jednjak Oesophagus	M Ž	162 40		120 25		74.1% 62.5%
C16	Želudac Stomach	M Ž	609 359		598 309		98.2% 86.1%
C17	Tanko crevo Small intestine	M Ž	37 27		11 14		29.7% 51.9%
C18	Debelo crevo Colon	M Ž	793 606		753 506		95.0% 83.5%
C19	Rektosigmoidni prelaz Rectosigmoid junction	M Ž	125 86		110 70		88.0% 81.4%
C20	Rektum Rectum	M Ž	717 453		630 385		87.9% 85.0%
C21	Anus i analni kanal Anus & anal canal	M Ž	27 18		10 10		37.0% 55.6%
C22	Jetra, žučni kanali Liver & intrahepatic bile ducts	M Ž	260 168		249 158		95.8% 94.0%
C23	Žučna kesha Gallbladder	M Ž	28 84		20 69		71.4% 82.1%
C24	Žučni kanali, drugi delovi Biliary tract, other & unspec. parts	M Ž	32 41		22 23		68.8% 56.1%
C25	Pankreas Pancreas	M Ž	325 309		261 189		80.3% 61.2%
C26	Org. za var., neodređ. lok. Other & ill-defined digestive organs	M Ž	31 30		10 20		32.3% 66.7%
C30	Nosna šupljina i srednje uvo Nasal cavity & middle ear	M Ž	12 8		10 7		83.3% 87.5%
C31	Nosni sinusi Accessory sinuses	M Ž	22 10		10 2		45.5% 20.0%
C32	Larings Larynx	M Ž	489 59		459 51		93.9% 86.4%
C33	Traheja Trachea	M Ž	8 8		3 2		37.5% 25.0%
C34	Bronh i pluća Bronchus & lung	M Ž	2677 797		2639 788		98.6% 98.9%
C37	Timus Thymus	M Ž	1 8		0 2		0.0% 25.0%
C38	Srce, mediastinum, pleura Heart, mediastinum & pleura	M Ž	35 21		29 12		82.9% 57.1%
C39	Toraks, druge lokalizacije Other & ill-def. in the res. sys. & intrath. org.	M Ž	1 5		1 2		100.0% 40.0%
C40	Kosti i zglob. hrskavice udova Bone & articular cartilage of limbs	M Ž	34 24		32 23		94.1% 95.8%
C41	Kosti i zglob. hrskav., dr. lok. Bone & artic. cart. of other & unspec. parts	M Ž	39 23		35 20		89.7% 87.0%
C43	Koža, maligni melanom Malignant melanoma of skin	M Ž	185 179		182 164		98.4% 91.6%
C44	Koža, drugi mal. tumori Skin, other malignomas	M Ž	1370 1269		1237 1032		90.3% 81.3%
C45	Mezoteliom Mesothelioma	M Ž	4 2		4 1		100.0% 50.0%
C46	Kaposijev sarkom Kaposi's sarcoma	M Ž	1 3		1 1		100.0% 33.3%
C47	Periferni nervi i aut. ner. sis. Peripheral nerves & auton. nerv. sys.	M Ž	4 6		4 4		100.0% 66.7%
C48	Peritoneum i retroperitoneum Retroperitoneum & peritoneum	M Ž	21 27		19 20		90.5% 74.1%
C49	Vezivna i meka tkiva, drugi Other connective and soft tissue	M Ž	89 53		60 37		67.4% 69.8%
C50	Dojka Breast	M Ž	60 2617		53 2603		88.3% 99.5%

**Tabela 22.1 Ukupan broj novoobolelih, broj i procenat histološki i citološki verifikovanih slučajeva raka prema primarnoj lokalizaciji i polu, centralna Srbija, 2005. godina (nastavak)**

Table 22.1 Total number of new cancer cases, number and percentage of histologically and cytologically confirmed cancer cases by primary site and sex, Central Serbia 2005 (continued)

MKB-10 (ICD-10) Šifra (Code)	Primarna lokalizacija Primary site	POL (SEX) M (Male) Z(Female)	Ukupan broj novoobolelih		Broj histo./ cito. verifikovanih		%
			All new cases		Number of cases histo./ cyto. confirmed		
			12679	11690	11083	10174	
C51	Vulva Vulva	Ž	84		82		97.6%
C52	Vagina Vagina	Ž	20		19		95.0%
C53	Grlić materice Cervix uteri	Ž	948		938		98.9%
C54	Materica, telo Corpus uteri	Ž	702		564		80.3%
C55	Materica, neoznačeni deo Uterus, unspecified part	Ž	36		26		72.2%
C56	Jajnik Ovary	Ž	500		457		91.4%
C57	Ženski gen. org., dr. neoz. lok. Other & unspec. parts of fem. gen. org.	Ž	32		20		62.5%
C58	Placenta Placenta	Ž	0		1		0.0%
C60	Penis Penis	M	46		32		69.6%
C61	Prostata Prostate	M	1197		982		82.0%
C62	Testis Testis	M	161		99		61.5%
C63	Muški gen. org., dr. neoz. org. Other & unspec. male genital organs	M	7		1		14.3%
C64	Bubreg Kidney, except renal pelvis	M	280		218		77.9%
C65	Bubrežna karlica Renal pelvis	Ž	178		137		77.0%
C66	Ureter Ureter	M	32		15		46.9%
C67	Mokraćna bešika Bladder	Ž	28		19		67.9%
C68	Ureter Ureter	M	17		15		88.2%
C69	Mokraćna bešika Bladder	Ž	20		11		55.0%
C70	Urinarni organi, dr. neoz. org. Other & unspecified urinary organs	M	821		692		84.3%
C71	Urinarni organi, dr. neoz. org. Other & unspecified urinary organs	Ž	270		215		79.6%
C72	Oko, pripoji oka Eye and adnexa	M	6		2		33.3%
C73	Oko, pripoji oka Eye and adnexa	Ž	4		1		25.0%
C74	Moždance Meninges	M	32		11		34.4%
C75	Moždance Meninges	Ž	26		15		57.7%
C76	Mozak Brain	M	22		11		50.0%
C77	Mozak Brain	Ž	36		29		80.6%
C78	Mozak Brain	M	311		300		96.5%
C79	Mozak Brain	Ž	256		253		98.8%
C80	Centralni ner. sis., dr. delovi Spinal cord, cran. nerv. & oth. parts of CNS	M	9		6		66.7%
C81	Centralni ner. sis., dr. delovi Spinal cord, cran. nerv. & oth. parts of CNS	Ž	12		11		91.7%
C82	Štitasta žlezda Thyroid gland	M	36		31		86.1%
C83	Štitasta žlezda Thyroid gland	Ž	123		99		80.5%
C84	Nadbubrežna žlezda Adrenal gland	M	11		9		81.8%
C85	Nadbubrežna žlezda Adrenal gland	Ž	12		10		83.3%
C86	Endokrine žlezde, druge Oth. endoc. gl. & related structures	M	13		4		30.8%
C87	Endokrine žlezde, druge Oth. endoc. gl. & related structures	Ž	6		5		83.3%
C88	Ostale lokalizacije Other & ill defined sites	M	41		11		26.8%
C89	Ostale lokalizacije Other & ill defined sites	Ž	67		12		17.9%
C90	Sekundarne lok., bez ozn. lok. Unspec. mal. neo. of lymph nod. & without of spec. of site	M	318		210		66.0%
C91	Sekundarne lok., bez ozn. lok. Unspec. mal. neo. of lymph nod. & without of spec. of site	Ž	244		130		53.3%
C92	Hodgkinova bolest Hodgkin's disease	M	109		82		75.2%
C93	Hodgkinova bolest Hodgkin's disease	Ž	96		85		88.5%
C94	Ne-Hodgkinov lim., folikularni Follicular non-Hodgkin's lymphoma	M	75		50		66.7%
C95	Ne-Hodgkinov lim., folikularni Follicular non-Hodgkin's lymphoma	Ž	58		42		72.4%
C96	Ne-Hodgkinov lim., difuzni Diffuse non-Hodgkin's lymphoma	M	69		32		46.4%
C97	Ne-Hodgkinov lim., difuzni Diffuse non-Hodgkin's lymphoma	Ž	56		35		62.5%
C98	Periferni i kožni lim. T-ćelija Peripheral & cutaneous T-cell lymphomas	M	6		4		66.7%
C99	Periferni i kožni lim. T-ćelija Peripheral & cutaneous T-cell lymphomas	Ž	6		4		66.7%
C100	Ne-Hodgkinovi limfomi, drugi Oth. & unspec. types of non-Hodgkin's lymphoma	M	105		71		67.6%
C101	Ne-Hodgkinovi limfomi, drugi Oth. & unspec. types of non-Hodgkin's lymphoma	Ž	75		51		68.0%
C102	Zloćudne imunoprolifer. bolesti Malignant immunoproliferative diseases	M	3		0		0.0%
C103	Zloćudne imunoprolifer. bolesti Malignant immunoproliferative diseases	Ž	3		1		33.3%
C104	Mult. mijelom i zloć. tum. plaz. ćel. Multiple myeloma and malignant plasma cell neoplasms	M	79		50		63.3%
C105	Mult. mijelom i zloć. tum. plaz. ćel. Multiple myeloma and malignant plasma cell neoplasms	Ž	66		55		83.3%
C106	Limfoidna leukemija Lymphoblastic, lymphoid leukaemia	M	138		123		89.1%
C107	Limfoidna leukemija Lymphoblastic, lymphoid leukaemia	Ž	90		90		100.0%
C108	Mijeloidna leukemija Myeloid leukaemia	M	100		100		100.0%
C109	Mijeloidna leukemija Myeloid leukaemia	Ž	71		70		98.6%
C110	Monocitna leukemija Monocytic leukaemia	M	7		6		85.7%
C111	Monocitna leukemija Monocytic leukaemia	Ž	4		2		50.0%
C112	Leukemije, druge Other leukaemias of specified cells	M	4		2		50.0%
C113	Leukemije, druge Other leukaemias of specified cells	Ž	7		1		14.3%
C114	Leukemije, neoznačene Leukaemia, unspecified cell type	M	16		15		93.8%
C115	Leukemije, neoznačene Leukaemia, unspecified cell type	Ž	19		13		68.4%
C116	Dr. zloć. tum. hematop. sist. Oth. & unspec. mal. neo. of lymph., haematopoietic & relate	M	0		0		0.0%
C117	Dr. zloć. tum. hematop. sist. Oth. & unspec. mal. neo. of lymph., haematopoietic & relate	Ž	1		1		100.0%
C00-C96 (C44)	Sve lokalizacije, bez kože All sites but skin	M	11309		9846		87.1%
C00-C96 (C44)	Sve lokalizacije, bez kože All sites but skin	Ž	10421		9142		87.7%

**Tabela 23. Broj novoobolelih i incidencija od raka na 100.000 stanovnika prema primarnoj lokalizaciji, uzrastu i polu, centralna Srbija, 2005. godina**

Table 23. Number of new cancer cases and cancer incidence rates per 100.000 population by primary site, age and sex, Central Serbia, 2005

MKB-10 (ICD-10) Šifra (Code)	Primarna lokalizacija Primary site	POL SEX M (Male) Z (Female)	Ukupno	Sirova incid.	Standardizovana incidencija (Stand. incidence)		TRUNC
			(All) 12679 11690	Crude rate 480.1 419.4	ASR(E) 391.5 322.7	ASR(W) 278.6 238.6	
C00	Usna Lip	M Ž	92 43	3.5 1.5	2.7 1.1	1.8 0.8	0.6 0.4
C01	Jezik, koren Base of tongue	M Ž	35 12	1.3 0.4	1.1 0.3	0.8 0.3	0.6 0.2
C02	Jezik, drugi delovi Tongue, other & unspecified parts	M Ž	33 7	1.2 0.3	1.1 0.2	0.8 0.1	0.7 0.1
C03	Desni Gum	M Ž	7 12	0.3 0.4	0.2 0.4	0.2 0.3	0.0 0.2
C04	Pod usta Floor of mouth	M Ž	41 6	1.6 0.2	1.3 0.2	0.9 0.2	0.6 0.1
C05	Nepece Palate	M Ž	17 10	0.6 0.4	0.6 0.3	0.5 0.2	0.4 0.1
C06	Usta, drugi delovi Mouth, other & unspecified parts	M Ž	14 39	0.5 1.4	0.4 1.3	0.3 1.0	0.2 0.8
C07	Parotidna žlezda Parotid gland	M Ž	33 23	1.2 0.8	1.0 0.6	0.7 0.5	0.3 0.3
C08	Pijuvućna žlezda Other & unspec. major salivary gl.	M Ž	13 8	0.5 0.3	0.4 0.2	0.3 0.2	0.3 0.1
C09	Krajnik Tonsil	M Ž	29 8	1.1 0.3	1.0 0.2	0.7 0.2	0.5 0.1
C10	Orofarings Oropharynx	M Ž	11 4	0.4 0.1	0.4 0.1	0.3 0.1	0.2 0.1
C11	Nasofarings Nasopharynx	M Ž	26 12	1.0 0.4	0.9 0.4	0.7 0.3	0.5 0.2
C12	Piriformni sinus Pyiform sinus	M Ž	2 0	0.1 0.0	0.1 0.0	0.0 0.0	0.0 0.0
C13	Hipofarings Hypopharynx	M Ž	50 9	1.9 0.3	1.6 0.3	1.1 0.2	0.8 0.1
C14	Usne, usta, ždrelo, drugi delovi Other & ill def. sites in the lip oral cavity & pharynx	M Ž	7 1	0.3 0.0	0.2 0.0	0.1 0.0	0.0 0.0
C15	Jednjak Oesophagus	M Ž	162 40	6.1 1.4	5.1 1.1	3.6 0.8	2.3 0.5
C16	Želudac Stomach	M Ž	609 359	23.1 12.9	18.4 9.1	12.7 6.5	6.5 3.4
C17	Tanko crevo Small intestine	M Ž	37 27	1.4 1.0	1.2 0.7	0.8 0.5	0.4 0.2
C18	Debelo crevo Colon	M Ž	793 606	30.0 21.7	23.9 15.2	16.5 10.5	7.9 5.3
C19	Rektosigmoidni prelaz Rectosigmoid junction	M Ž	125 86	4.7 3.1	4.0 2.3	2.9 1.6	1.9 1.1
C20	Rektum Rectum	M Ž	717 453	27.2 16.3	21.7 11.4	15.0 8.0	7.6 4.2
C21	Anus i analni kanal Anus & anal canal	M Ž	27 18	1.0 0.6	0.8 0.5	0.6 0.3	0.2 0.2
C22	Jetra, žučni kanali Liver & intrahepatic bile ducts	M Ž	260 168	9.8 6.0	7.9 4.1	5.5 2.9	2.6 1.4
C23	Žučna kesa Gallbladder	M Ž	28 84	1.1 3.0	0.8 2.0	0.5 1.4	0.2 0.7
C24	Žučni kanali, drugi delovi Biliary tract, other & unspec. parts	M Ž	32 41	1.2 1.5	0.9 1.0	0.6 0.7	0.2 0.3
C25	Pankreas Pancreas	M Ž	325 309	12.3 11.1	10.0 7.4	7.0 5.0	4.1 2.3
C26	Org. za var., neodređ. lok. Other & ill-defined digestive organs	M Ž	31 30	1.2 1.1	0.9 0.7	0.6 0.5	0.3 0.3
C30	Nosna šupljina i srednje uvo Nasal cavity & middle ear	M Ž	12 8	0.5 0.3	0.4 0.2	0.3 0.1	0.0 0.0
C31	Nosni sinusi Accessory sinuses	M Ž	22 10	0.8 0.4	0.7 0.2	0.6 0.2	0.3 0.1
C32	Larings Larynx	M Ž	489 59	18.5 2.1	15.6 1.8	11.4 1.3	8.0 1.1
C33	Traheja Trachea	M Ž	8 8	0.3 0.3	0.3 0.2	0.2 0.2	0.1 0.1
C34	Bronh i pluća Bronchus & lung	M Ž	2677 797	101.4 28.6	83.0 21.7	58.9 15.6	35.6 10.5
C37	Timus Thymus	M Ž	1 8	0.0 0.3	0.0 0.2	0.0 0.2	0.0 0.1
C38	Srce, mediastinum, pleura Heart, mediastinum & pleura	M Ž	35 21	1.3 0.8	1.1 0.6	0.9 0.4	0.5 0.3
C39	Toraks, druge lokalizacije Other & ill-def. in the res. sys. & intrath. org.	M Ž	1 5	0.0 0.2	0.0 0.2	0.0 0.1	0.0 0.1
C40	Kosti i zglob. hrskavice udova Bone & articular cartilage of limbs	M Ž	34 24	1.3 0.9	1.2 0.7	1.1 0.7	0.3 0.1
C41	Kosti i zglob. hrskav. dr. lok. Bone & artic. cart. of other & unspec. parts	M Ž	39 23	1.5 0.8	1.3 0.7	1.1 0.6	0.5 0.2
C43	Koža, maligni melanom Malignant melanoma of skin	M Ž	185 179	7.0 6.4	5.9 5.1	4.2 3.9	2.6 2.4
C44	Koža, drugi mal. tumori Skin, other malignomas	M Ž	1370 1269	51.9 45.5	40.9 31.4	27.5 21.9	11.8 10.7
C45	Mezoteliom Mesothelioma	M Ž	4 2	0.2 0.1	0.1 0.1	0.1 0.0	0.0 0.0
C46	Kaposijev sarkom Kaposi's sarcoma	M Ž	1 3	0.0 0.1	0.0 0.1	0.0 0.0	0.0 0.0
C47	Periferni nervi i aut. ner. sis. Peripheral nerves & auton. nerv. sys.	M Ž	4 6	0.2 0.2	0.1 0.2	0.1 0.2	0.1 0.1
C48	Peritoneum i retroperitoneum Retroperitoneum & peritoneum	M Ž	21 27	0.8 1.0	0.7 0.7	0.5 0.6	0.3 0.3
C49	Vezivna i meka tkiva, drugi Other connective and soft tissue	M Ž	89 53	3.4 1.9	2.9 1.7	2.3 1.4	1.0 0.8
C50	Dojka Breast	M Ž	60 2617	2.3 93.9	1.9 75.5	1.4 56.1	0.8 41.4

Tabela 23.1 Broj novoobolelih i incidencija od raka na 100.000 stanovnika prema primarnoj lokalizaciji, uzrastu i polu, centralna Srbija, 2005. godina (nastavak)

Table 23.1 Number of new cancer cases and cancer incidence rates per 100.000 population by primary site, age and sex, Central Serbia, 2005 (continued)

MKB-10 (ICD-10) Šifra (Code)	Primarna lokalizacija Primary site	POL SEX M (Male) Z (Female)	Ukupno	Sirova icid.	Standardizovana incidencija (Stand. incidence)		
			(All)	Crude rate	ASR(E)	ASR(W)	TRUNC
			12679	480.1	391.5	278.6	143.5
			11690	419.4	322.7	238.6	149.3
C51	Vulva Vulva	Ž	84	3.0	2.1	1.5	0.7
C52	Vagina Vagina	Ž	20	0.7	0.5	0.4	0.2
C53	Grlić materice Cervix uteri	Ž	948	34.0	30.2	23.6	19.0
C54	Materica, telo Corpus uteri	Ž	702	25.2	19.2	13.8	9.0
C55	Materica, neoznačeni deo Uterus, unspecified part	Ž	36	1.3	0.9	0.7	0.4
C56	Jajnik Ovary	Ž	500	17.9	14.9	11.5	7.8
C57	Ženski gen. org., dr. neoz. lok. Other & unspec. parts of fem. gen. org.	Ž	32	1.1	0.9	0.7	0.5
C58	Placenta Placenta	Ž	0	0.0	0.0	0.0	0.0
C60	Penis Penis	M	46	1.7	1.4	1.0	0.5
C61	Prostata Prostate	M	1197	45.3	34.3	22.2	6.4
C62	Testis Testis	M	161	6.1	5.9	5.5	2.0
C63	Muški gen. org., dr. neoz. org. Other & unspec. male genital organs	M	7	0.3	0.2	0.2	0.1
C64	Bubreg Kidney, except renal pelvis	M Ž	280 178	10.6 6.4	9.1 4.8	6.9 3.6	4.2 2.1
C65	Bubrežna karlica Renal pelvis	M Ž	32 28	1.2 1.0	1.0 0.7	0.8 0.5	0.4 0.2
C66	Ureter Ureter	M Ž	17 20	0.6 0.7	0.5 0.5	0.4 0.3	0.2 0.1
C67	Mokraćna bešika Bladder	M Ž	821 270	31.1 9.7	25.0 6.8	17.3 4.8	8.4 2.6
C68	Urinarni organi, dr. neoz. org. Other & unspecified urinary organs	M Ž	6 4	0.2 0.1	0.2 0.1	0.1 0.1	0.1 0.1
C69	Oko, pripojni oka Eye and adnexa	M Ž	32 26	1.2 0.9	1.0 0.7	0.8 0.6	0.3 0.2
C70	Moždance Meninges	M Ž	22 36	0.8 1.3	0.7 1.1	0.6 0.8	0.3 0.6
C71	Mozak Brain	M Ž	311 256	11.8 9.2	10.2 7.6	8.0 6.1	4.4 3.3
C72	Centralni ner. sis., dr. delovi Spinal cord, cran. nerv. & oth. parts of CNS	M Ž	9 12	0.3 0.4	0.4 0.4	0.4 0.4	0.1 0.1
C73	čtitasta žlezda Thyroid gland	M Ž	36 123	1.4 4.4	1.2 3.8	0.8 3.1	0.6 1.8
C74	Nadbubrežna žlezda Adrenal gland	M Ž	11 12	0.4 0.4	0.4 0.4	0.3 0.3	0.2 0.2
C75	Endokrine žlezde, druge Oth. endoc. gl. & related structures	M Ž	13 6	0.5 0.2	0.4 0.2	0.3 0.2	0.2 0.1
C76	Ostale lokalizacije Other & ill defined sites	M Ž	41 67	1.6 2.4	1.3 1.6	0.9 1.1	0.5 0.3
C77-C80	Sekundarne lok., bez ozn. lok. Unspec. mal. neo. of lymph nod. & without of spec. of site	M Ž	318 244	12.0 8.8	10.0 6.6	7.5 4.9	3.7 2.5
C81	Hodgkinova bolest Hodgkin's disease	M Ž	109 96	4.1 3.4	3.8 3.3	3.4 3.1	1.4 1.2
C82	Ne-Hodgkinov lim., folikularni Follicular non-Hodgkin's lymphoma	M Ž	75 58	2.8 2.1	2.5 1.7	2.0 1.3	1.0 0.8
C83	Ne-Hodgkinov lim., difuzni Diffuse non-Hodgkin's lymphoma	M Ž	69 56	2.6 2.0	2.2 1.5	1.7 1.1	0.7 0.5
C84	Periferni i kožni lim. T-ćelija Peripheral & cutaneous T-cell lymphomas	M Ž	6 6	0.2 0.2	0.2 0.1	0.2 0.1	0.1 0.0
C85	Ne-Hodgkinovi limfomi, drugi Oth. & unspec. types of non-Hodgkin's lymphoma	M Ž	105 75	4.0 2.7	3.4 2.1	2.6 1.6	1.6 0.8
C88	Zloćudne imunoprolifer. bolesti Malignant immunoproliferative diseases	M Ž	3 3	0.1 0.1	0.1 0.1	0.1 0.0	0.0 0.0
C90	Mult. mijelom i zloć. tum. plaz. ćel. Multiple myeloma and malignant plasma cell neoplasms	M Ž	79 66	3.0 2.4	2.5 1.7	1.8 1.2	1.1 0.7
C91	Limfoidna leukemija Lymphoblastic, lymphoid leukaemia	M Ž	138 90	5.2 3.2	4.5 2.7	3.6 2.4	1.3 1.0
C92	Mijeloidna leukemija Myeloid leukaemia	M Ž	100 71	3.8 2.5	3.3 2.0	2.5 1.6	1.5 0.9
C93	Monocitna leukemija Monocytic leukaemia	M Ž	7 4	0.3 0.1	0.2 0.1	0.2 0.1	0.0 0.0
C94	Leukemije, druge Other leukaemias of specified cells	M Ž	4 7	0.2 0.3	0.1 0.2	0.1 0.1	0.1 0.1
C95	Leukemije, neoznačene Leukaemia, unspecified cell type	M Ž	16 19	0.6 0.7	0.5 0.7	0.4 0.6	0.1 0.3
C96	Dr. zloć. tum. hematop. sist. Oth. & unspec. mal. neo. of lymph., haematopoietic & relat	M Ž	0 1	0.0 0.0	0.0 0.0	0.0 0.0	0.0 0.0
C00-C96 (C44)	Sve lokalizacije, bez kože All sites but skin	M Ž	11309 10421	428.2 373.9	350.7 291.2	251.0 216.7	131.7 138.6

Tabela 24. Broj umrlih i mortalitet od raka na 100.000 stanovnika prema primarnoj lokalizaciji, uzrastu i polu, centralna Srbija, 2005. godina

Table 24. Number of death cancer cases and cancer mortality rates per 100.000 population by primary site, age and sex, Central Serbia, 2005

MKB-10 (ICD-10) Šifra (Code)	Primarna lokalizacija Primary site	POL SEX M (Male) Z (Female)	Ukupno	Sirovi mort.	Standardizovani mortalitet (Stand. mortality)		
			(All)	Crude rate	ASR(E)	ASR(W)	TRUNC
			7858	297.6	237.8	163.2	78.8
			6142	220.4	153.4	106.3	55.8
C00	Usna Lip	M	17	0.6	0.5	0.3	0.1
		Ž	8	0.3	0.2	0.1	0.0
C01	Jezik, koren Base of tongue	M	16	0.6	0.5	0.4	0.3
		Ž	4	0.1	0.1	0.1	0.0
C02	Jezik, drugi delovi Tongue, other & unspecified parts	M	21	0.8	0.7	0.5	0.3
		Ž	7	0.3	0.2	0.2	0.1
C03	Desni Gum	M	0	0.0	0.0	0.0	0.0
		Ž	0	0.0	0.0	0.0	0.0
C04	Pod usta Floor of mouth	M	21	0.8	0.7	0.5	0.3
		Ž	5	0.2	0.1	0.1	0.0
C05	Nepce Palate	M	6	0.2	0.2	0.2	0.2
		Ž	3	0.1	0.1	0.1	0.0
C06	Usta, drugi delovi Mouth, other & unspecified parts	M	8	0.3	0.3	0.2	0.1
		Ž	5	0.2	0.1	0.1	0.0
C07	Parotidna žlezda Parotid gland	M	11	0.4	0.4	0.2	0.1
		Ž	9	0.3	0.2	0.1	0.0
C08	Pljučna žlezda Other & unspec. major salivary gl.	M	3	0.1	0.1	0.1	0.0
		Ž	1	0.0	0.0	0.0	0.0
C09	Krajinik Tonsil	M	12	0.5	0.4	0.3	0.3
		Ž	4	0.1	0.1	0.1	0.1
C10	Orofarings Oropharynx	M	9	0.3	0.3	0.2	0.2
		Ž	5	0.2	0.1	0.1	0.1
C11	Nasofarings Nasopharynx	M	13	0.5	0.4	0.3	0.3
		Ž	7	0.3	0.2	0.1	0.0
C12	Piriformni sinus Pyriform sinus	M	0	0.0	0.0	0.0	0.0
		Ž	0	0.0	0.0	0.0	0.0
C13	Hipofarings Hypopharynx	M	57	2.2	1.8	1.3	0.9
		Ž	15	0.5	0.4	0.3	0.2
C14	Usne, usta, ždrelo, drugi delovi Other & ill def. sites in the lip oral cavity & pharynx	M	16	0.6	0.5	0.4	0.3
		Ž	2	0.1	0.1	0.1	0.0
C15	Jednjak Oesophagus	M	144	5.5	4.6	3.3	2.1
		Ž	28	1.0	0.7	0.5	0.3
C16	Želudac Stomach	M	559	21.2	16.7	11.3	5.2
		Ž	335	12.0	8.1	5.5	2.4
C17	Tanko crevo Small intestine	M	14	0.5	0.4	0.3	0.1
		Ž	16	0.6	0.4	0.3	0.1
C18	Debelo crevo Colon	M	458	17.3	13.6	9.0	3.6
		Ž	442	15.9	10.2	6.8	2.6
C19	Rektosigmoidni prelaz Rectosigmoid junction	M	32	1.2	1.0	0.7	0.4
		Ž	30	1.1	0.7	0.4	0.1
C20	Rektum Rectum	M	467	17.7	13.8	9.1	3.6
		Ž	287	10.3	6.6	4.4	1.7
C21	Anus i analni kanal Anus & anal canal	M	9	0.3	0.3	0.2	0.1
		Ž	7	0.3	0.2	0.1	0.0
C22	Jetra, žučni kanali Liver & intrahepatic bile ducts	M	287	10.9	8.6	5.8	2.5
		Ž	211	7.6	5.1	3.4	1.7
C23	Žučna kesha Gallbladder	M	35	1.3	1.0	0.6	0.2
		Ž	101	3.6	2.3	1.5	0.6
C24	Žučni kanali, drugi delovi Biliary tract, other & unspec. parts	M	34	1.3	1.0	0.7	0.3
		Ž	29	1.0	0.7	0.4	0.2
C25	Pankreas Pancreas	M	389	14.7	11.8	8.1	4.1
		Ž	348	12.5	8.0	5.2	2.0
C26	Org. za var., neodređ. lok. Other & ill-defined digestive organs	M	11	0.4	0.3	0.2	0.1
		Ž	14	0.5	0.4	0.3	0.2
C30	Nosna šupljina i srednje uvo Nasal cavity & middle ear	M	3	0.1	0.1	0.1	0.0
		Ž	6	0.2	0.1	0.1	0.0
C31	Nosni sinusi Accessory sinuses	M	5	0.2	0.2	0.1	0.1
		Ž	10	0.4	0.2	0.1	0.1
C32	Larings Larynx	M	271	10.3	8.2	5.6	3.0
		Ž	33	1.2	0.8	0.6	0.4
C33	Traheja Trachea	M	13	0.5	0.4	0.3	0.3
		Ž	5	0.2	0.1	0.1	0.1
C34	Bronh i pluća Bronchus & lung	M	2364	89.5	72.4	50.5	28.7
		Ž	705	25.3	18.1	12.6	7.6
C37	Timus Thymus	M	0	0.0	0.0	0.0	0.0
		Ž	0	0.0	0.0	0.0	0.0
C38	Srce, mediastinum, pleura Heart, mediastinum & pleura	M	43	1.6	1.4	1.0	0.6
		Ž	17	0.6	0.4	0.3	0.1
C39	Toraks, druge lokalizacije Other & ill-def. in the res. sys. & intrath. org.	M	0	0.0	0.0	0.0	0.0
		Ž	1	0.0	0.0	0.0	0.0
C40	Kosti i zglobovi, hrskavice udova Bone & articular cartilage of limbs	M	14	0.5	0.5	0.4	0.1
		Ž	9	0.3	0.3	0.3	0.0
C41	Kosti i zglobovi, hrskav., dr. lok. Bone & artic. cart. of other & unspec. parts	M	30	1.1	1.0	0.8	0.4
		Ž	19	0.7	0.5	0.4	0.2
C43	Koža, maligni melanom Malignant melanoma of skin	M	83	3.1	2.6	1.9	1.2
		Ž	73	2.6	2.0	1.5	0.9
C44	Koža, drugi mal. tumori Skin, other malignomas	M	59	2.2	1.8	1.1	0.4
		Ž	59	2.1	1.2	0.7	0.2
C45	Mezoteliom Mesothelioma	M	17	0.6	0.6	0.4	0.3
		Ž	6	0.2	0.1	0.1	0.0
C46	Kaposijev sarkom Kaposi's sarcoma	M	1	0.0	0.0	0.0	0.0
		Ž	0	0.0	0.0	0.0	0.0
C47	Periferni nervi i aut. ner. sis. Peripheral nerves & auton. nerv. sys.	M	1	0.0	0.0	0.0	0.0
		Ž	3	0.1	0.1	0.1	0.0
C48	Peritoneum i retroperitoneum Retroperitoneum & peritoneum	M	29	1.1	0.9	0.6	0.2
		Ž	27	1.0	0.7	0.5	0.2
C49	Vezivna i meka tkiva, drugi Other connective and soft tissue	M	20	0.8	0.7	0.5	0.3
		Ž	10	0.4	0.3	0.2	0.2
C50	Dojka Breast	M	27	1.0	0.9	0.6	0.4
		Ž	1115	40.0	29.5	20.9	13.5

**Tabela 24.1 Broj umrlih i mortalitet od raka na 100.000 stanovnika prema primarnoj lokalizaciji, uzrastu i polu, centralna Srbija, 2005. godina (nastavak)**

Table 24.1 Number of death cancer cases and cancer mortality rates per 100.000 population by primary site, age and sex, Central Serbia, 2005 (continued)

MKB-10 (ICD-10) Šifra (Code)	Primarna lokalizacija Primary site	POL SEX M (Male) Z (Female)	Ukupno	Sirovi mort.	Standardizovani mortalitet (Stand. mortality)		
			(All)	Crude rate	ASR(E)	ASR(W)	TRUNC
		7858		297.6	237.8	163.2	78.8
		6142		220.4	153.4	106.3	55.8
C51	Vulva Vulva	Ž	33	1.2	0.8	0.5	0.2
C52	Vagina Vagina	Ž	10	0.4	0.2	0.2	0.1
C53	Grlić materice Cervix uteri	Ž	370	13.3	10.2	7.5	4.7
C54	Materica, telo Corpus uteri	Ž	98	3.5	2.3	1.5	0.7
C55	Materica, neoznačeni deo Uterus, unspecified part	Ž	133	4.8	3.3	2.2	1.1
C56	Jajnik Ovary	Ž	256	9.2	6.5	4.6	2.6
C57	Ženski gen. org., dr. neoz. lok. Other & unspec. parts of fem. gen. org.	Ž	11	0.4	0.3	0.2	0.1
C58	Placenta Placenta	Ž	0	0.0	0.0	0.0	0.0
C60	Penis Penis	M	9	0.3	0.3	0.2	0.0
C61	Prostata Prostate	M	589	22.3	16.4	9.7	1.3
C62	Testis Testis	M	24	0.9	0.8	0.8	0.2
C63	Muški gen. org., dr. neoz. org. Other & unspec. male genital organs	M	0	0.0	0.0	0.0	0.0
C64	Bubreg Kidney, except renal pelvis	M Ž	147 99	5.6 3.6	4.4 2.2	3.1 1.6	1.4 0.5
C65	Bubrežna karlica Renal pelvis	M Ž	9 13	0.3 0.5	0.3 0.3	0.2 0.2	0.1 0.0
C66	Ureter Ureter	M Ž	9 7	0.3 0.3	0.3 0.1	0.2 0.1	0.1 0.0
C67	Mokraćna bešika Bladder	M Ž	292 88	11.1 3.2	8.4 1.9	5.3 1.2	1.6 0.4
C68	Urinarni organi, dr. neoz. org. Other & unspecified urinary organs	M Ž	3 0	0.1 0.0	0.1 0.0	0.1 0.0	0.1 0.0
C69	Oko, pripoji oka Eye and adnexa	M Ž	4 8	0.2 0.3	0.1 0.2	0.1 0.2	0.0 0.1
C70	Moždanice Meninges	M Ž	4 16	0.2 0.6	0.1 0.4	0.1 0.3	0.1 0.1
C71	Mozak Brain	M Ž	263 183	10.0 6.6	8.5 5.2	6.6 3.9	3.5 2.3
C72	Centralni ner. sis., dr. delovi Spinal cord, cran. nerv. & oth. parts of CNS	M Ž	6 10	0.2 0.4	0.2 0.3	0.1 0.2	0.1 0.1
C73	Štitasta žlezda Thyroid gland	M Ž	12 27	0.5 1.0	0.3 0.7	0.2 0.5	0.0 0.2
C74	Nadbubrežna žlezda Adrenal gland	M Ž	13 10	0.5 0.4	0.4 0.3	0.3 0.2	0.2 0.1
C75	Endokrine žlezde, druge Oth. endoc. gl. & related structures	M Ž	12 8	0.5 0.3	0.4 0.2	0.3 0.2	0.1 0.1
C76	Ostale lokalizacije Other & ill defined sites	M Ž	84 175	3.2 6.3	2.5 4.0	1.7 2.6	0.6 1.0
C77-C80	Sekundarne lok., bez ozn. lok. Unspec. mal. neo. of lymph nod. & without of spec. of site	M Ž	345 262	13.1 9.4	10.3 6.4	7.0 4.4	3.2 2.2
C81	Hodgkinova bolest Hodgkin's disease	M Ž	29 23	1.1 0.8	1.0 0.6	0.8 0.5	0.4 0.2
C82	Ne-Hodgkinov lim., folikularni Follicular non-Hodgkin's lymphoma	M Ž	8 4	0.3 0.1	0.3 0.1	0.2 0.1	0.1 0.1
C83	Ne-Hodgkinov lim., difuzni Diffuse non-Hodgkin's lymphoma	M Ž	21 15	0.8 0.5	0.7 0.4	0.5 0.3	0.3 0.2
C84	Periferni i kožni lim. T-ćelija Peripheral & cutaneous T-cell lymphomas	M Ž	0 1	0.0 0.0	0.0 0.0	0.0 0.0	0.0 0.0
C85	Ne-Hodgkinovi limfomi, drugi Oth. & unspec. types of non-Hodgkin's lymphoma	M Ž	73 69	2.8 2.5	2.3 1.8	1.8 1.2	0.9 0.7
C88	Zloćudne imunoprolifer. bolesti Malignant immunoproliferative diseases	M Ž	2 3	0.1 0.1	0.1 0.1	0.0 0.0	0.0 0.0
C90	Mult. mijelom i zloć. tum. plaz. ćel. Multiple myeloma and malignant plasma cell neoplasms	M Ž	55 57	2.1 2.0	1.6 1.3	1.1 0.9	0.4 0.4
C91	Limfoidna leukemija Lymphoblastic, lymphoid leukaemia	M Ž	92 55	3.5 2.0	2.8 1.3	2.1 0.9	0.7 0.4
C92	Mijeloidna leukemija Myeloid leukaemia	M Ž	90 53	3.4 1.9	2.9 1.6	2.2 1.2	1.3 0.8
C93	Monocitna leukemija Monocytic leukaemia	M Ž	3 1	0.1 0.0	0.1 0.0	0.1 0.0	0.0 0.0
C94	Leukemije, druge Other leukaemias of specified cells	M Ž	3 3	0.1 0.1	0.1 0.1	0.1 0.1	0.1 0.1
C95	Leukemije, neoznačene Leukaemia, unspecified cell type	M Ž	27 18	1.0 0.6	0.8 0.4	0.5 0.3	0.2 0.1
C96	Dr. zloć. tum. hematop. sist. Oth. & unspec. mal. neo. of lymph., haematopoietic & related tissu	M Ž	1 2	0.0 0.1	0.0 0.1	0.0 0.0	0.0 0.0
C00-C96 (C44)	Sve lokalizacije, bez kože All sites but skin	M Ž	7799 6083	295.3 218.3	236.0 152.1	162.2 105.6	78.4 55.6